

Electronic Supplementary Information

Crystal Structures and Phase Transition Behaviour in the 5d transition metal oxides

$A\text{ReO}_4$ ($A = \text{Ag, Na, K, Rb, Cs}$ and Tl).

Clarissa Chay¹, Maxim Avdeev^{1,2}, Helen E.A. Brand³, Sean Injac¹, Thomas A. Whittle¹ and
Brendan J. Kennedy^{1*}

¹ *School of Chemistry, The University of Sydney, Sydney, New South Wales 2006, Australia*

² *Australian Centre for Neutron Scattering, Australian Nuclear Science and Technology Organisation, ANSTO, Lucas Heights, NSW 2234, Australia*

³ *Australian Synchrotron, Australian Nuclear Science and Technology Organisation, ANSTO, 800 Blackburn Road, Clayton, Victoria 3168, Australia*

Table S1: Atomic coordinates and ADPs derived from Rietveld refinements against neutron diffraction data for the $A\text{ReO}_4$ oxides. The temperatures used for TlReO_4 are indicated; all other data were measured for the samples at room temperature.

Sample	Atom	x	y	z	$U_{\text{iso}} / \text{\AA}^2$
NaReO₄	$a = 5.3725(1) \text{ c} = 11.7412(4) \text{ \AA} \text{ Vol} = 338.90(2) \text{ \AA}^3$				
$I4_1/a$ (No. 88)	Na	0	$\frac{1}{4}$	$\frac{5}{8}$	0.0344(11)
$\chi^2 = 5.905$	Re	0	$\frac{1}{4}$	$\frac{1}{8}$	0.0081(3)
R_p 0.0798 R_{wp} 0.0596	O	0.1274(3)	0.0154(3)	0.2076(1)	0.0209(3)
AgReO₄	$a = 5.37674(7) \text{ c} = 11.8006(2) \text{ \AA} \text{ Vol} = 341.15(1) \text{ \AA}^3$				
$I4_1/a$ (No. 88)	Ag	0	$\frac{1}{4}$	$\frac{5}{8}$	0.0205(5)
$\chi^2 = 2.31$	Re	0	$\frac{1}{4}$	$\frac{1}{8}$	0.0094(3)
R_p 0.0609 R_{wp} 0.0486	O	0.1312(2)	0.0195(2)	0.2080(1)	0.0196(3)
KReO₄	$a = 5.67625(8) \text{ c} = 12.6994(4) \text{ \AA} \text{ Vol} = 409.17(1) \text{ \AA}^3$				
$I4_1/a$ (No. 88)	K	0	$\frac{1}{4}$	$\frac{5}{8}$	0.0201(8)
$\chi^2 = 2.36$	Re	0	$\frac{1}{4}$	$\frac{1}{8}$	0.0124(3)
R_p 0.0635 R_{wp} 0.0502	O	0.1162(3)	0.0296(2)	0.2026(1)	0.0250(3)
TlReO₄ 50 K	$a = 5.78654(9) \text{ c} = 12.8718(3) \text{ \AA} \text{ Vol} = 431.00(2) \text{ \AA}^3$				
$I4_1/a$ (No. 88)	Tl	0	$\frac{1}{4}$	$\frac{5}{8}$	0.0048(3)
$\chi^2 = 2.70$	Re	0	$\frac{1}{4}$	$\frac{1}{8}$	0.0026(4)
R_p 0.0609 R_{wp} 0.0486	O	0.1192(3)	0.0355(3)	0.2013(1)	0.0100(3)
TlReO₄ 450 K	$a = 5.7710(3) \text{ c} = 13.4041(3) \text{ \AA} \text{ Vol} = 447.34(5) \text{ \AA}^3$				
$I4_1/a$ (No. 88)	Tl	0	$\frac{1}{4}$	$\frac{5}{8}$	0.0453(12)
$\chi^2 = 2.51$	Re	0	$\frac{1}{4}$	$\frac{1}{8}$	0.0330(11)
R_p 0.0525 R_{wp} 0.0417	O	0.0875(6)	0.0251(6)	0.1981(3)	0.0779(11)
RbReO₄	$a = 5.8329(1) \text{ c} = 13.2543(3) \text{ \AA} \text{ Vol} = 450.94(2) \text{ \AA}^3$				
$I4_1/a$ (No. 88)	Rb	0	$\frac{1}{4}$	$\frac{5}{8}$	0.0225(6)
$\chi^2 = 2.51$	Re	0	$\frac{1}{4}$	$\frac{1}{8}$	0.0182(5)
R_p 0.0544 R_{wp} 0.0423	O	0.1048(3)	0.0329(3)	0.1992(2)	0.0337(4)
CsReO₄	$a = 5.7476(3) \text{ b} = 5.9881(3) \text{ c} = 14.2928(7) \text{ \AA} \text{ Vol} = 491.91(5) \text{ \AA}^3$				
$Pnma$ (No. 62)	Cs	0.0230(9)	$\frac{3}{4}$	0.1276(4)	0.0276(12)
$\chi^2 = 2.02$	Re	0.0392(5)	$\frac{1}{4}$	0.3800(2)	0.0196(7)
R_p 0.0547 R_{wp} 0.0433	O1	0.822(1)	$\frac{1}{4}$	0.0830(3)	0.0355(13)
	O2	0.8552(9)	$\frac{1}{4}$	0.4752(4)	0.0640(19)
	O3	0.0105(9)	0.5153(6)	0.6857(2)	0.0498(12)

Table S2: Atomic coordinates and ADPs derived from Rietveld refinements against neutron diffraction data collected at room temperature on TlReO₄ oxide.

$$a = 17.4071(8) \text{ \AA} \quad b = 13.3329(5) \text{ \AA} \quad c = 5.62872(28) \text{ \AA} \quad \beta = 90.156(5)^\circ \quad \text{Vol} = 1306.34(10) \text{ \AA}^3$$

Name	x	y	z	U _i *100 Å ²
Tl1	0.0820(11)	0.3747(10)	0.4814(24)	2.54(24)
Tl2	0.2450(10)	0.6349(10)	0.4811(23)	2.92(38)
Tl3	0.4104(10)	0.3767(10)	0.4962(25)	2.51(33)
Re1	0.2492(8)	0.3792(12)	-0.0194(24)	2.77(38)
Re2	0.4181(9)	0.6269(8)	0.0041(20)	1.42(24)
Re3	0.0845(9)	0.6157(9)	0.0317(17)	1.67(26)
O11	0.2769(12)	0.4571(15)	-0.2414(39)	3.66(55)
O12	0.2095(12)	0.4433(14)	0.2268(34)	2.52(47)
O13	0.1866(12)	0.2921(15)	-0.1226(32)	3.00(49)
O14	0.3262(15)	0.3045(21)	0.0610(50)	5.11(73)
O21	0.3803(12)	0.5515(16)	0.2114(44)	3.76(58)
O22	0.4579(18)	0.5525(26)	-0.2091(67)	9.03(120)
O23	0.4866(14)	0.6991(24)	0.1190(42)	3.58(56)
O24	0.3448(14)	0.6980(21)	-0.1330(45)	3.94(61)
O31	0.1704(11)	0.6678(14)	-0.0132(34)	3.62(49)
O32	0.0031(11)	0.6915(13)	-0.0513(32)	1.59(38)
O33	0.0752(10)	0.5807(11)	0.3215(26)	2.32(30)
O34	0.0802(14)	0.5078(11)	-0.1322(25)	3.58(38)

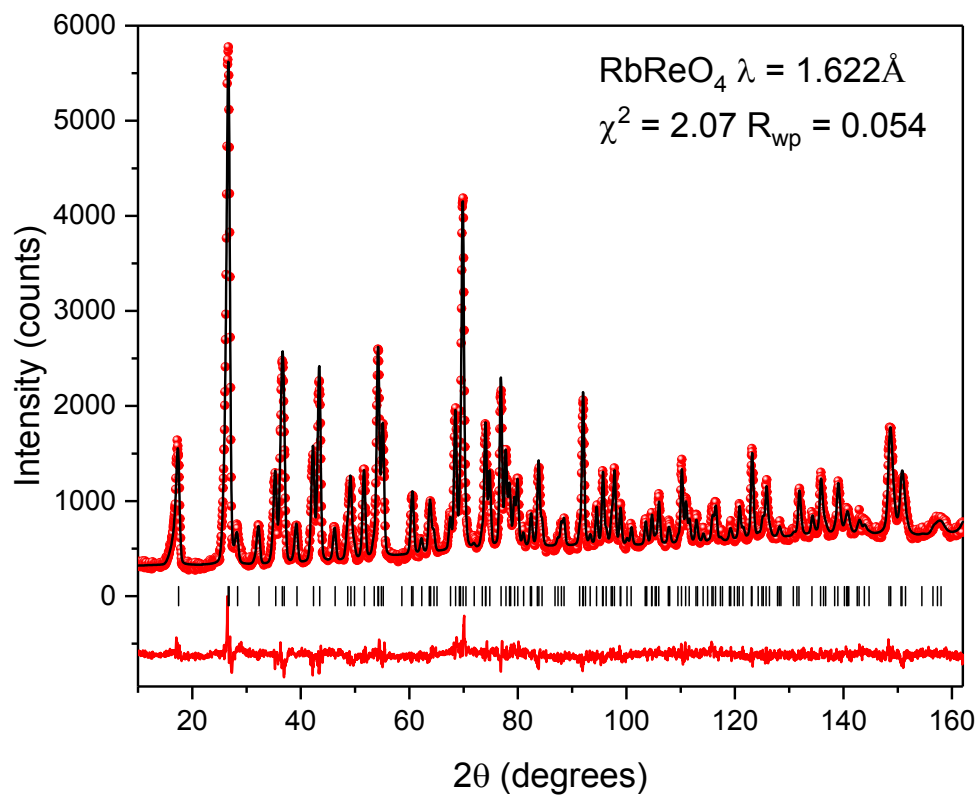


Figure S1(a). Observed (red symbols) calculated (black line) and difference (red line) neutron diffraction profiles for RbReO₄ measured at room temperature and fitted in space group $I4_1/a$. The short vertical lines show the positions of the space group allowed Bragg reflections.

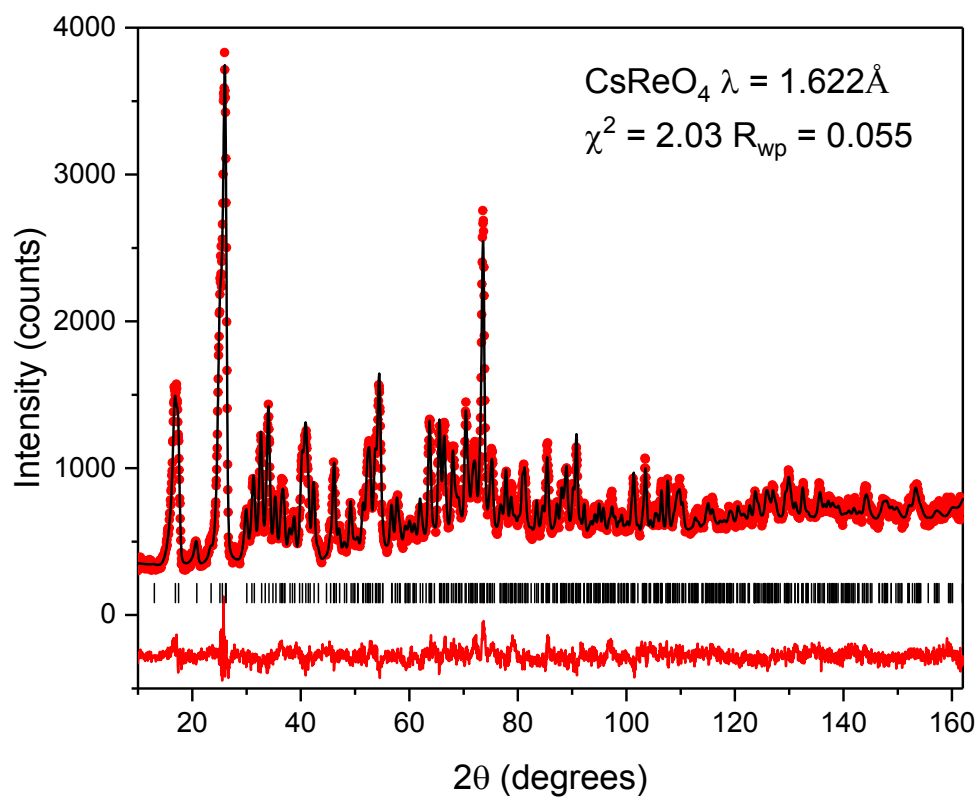


Figure S1(b). Observed (red symbols) calculated (black line) and difference (red line) neutron diffraction profiles for CsReO₄ measured at room temperature and fitted in space group *Pnma*. The short vertical lines show the positions of the space group allowed Bragg reflections.

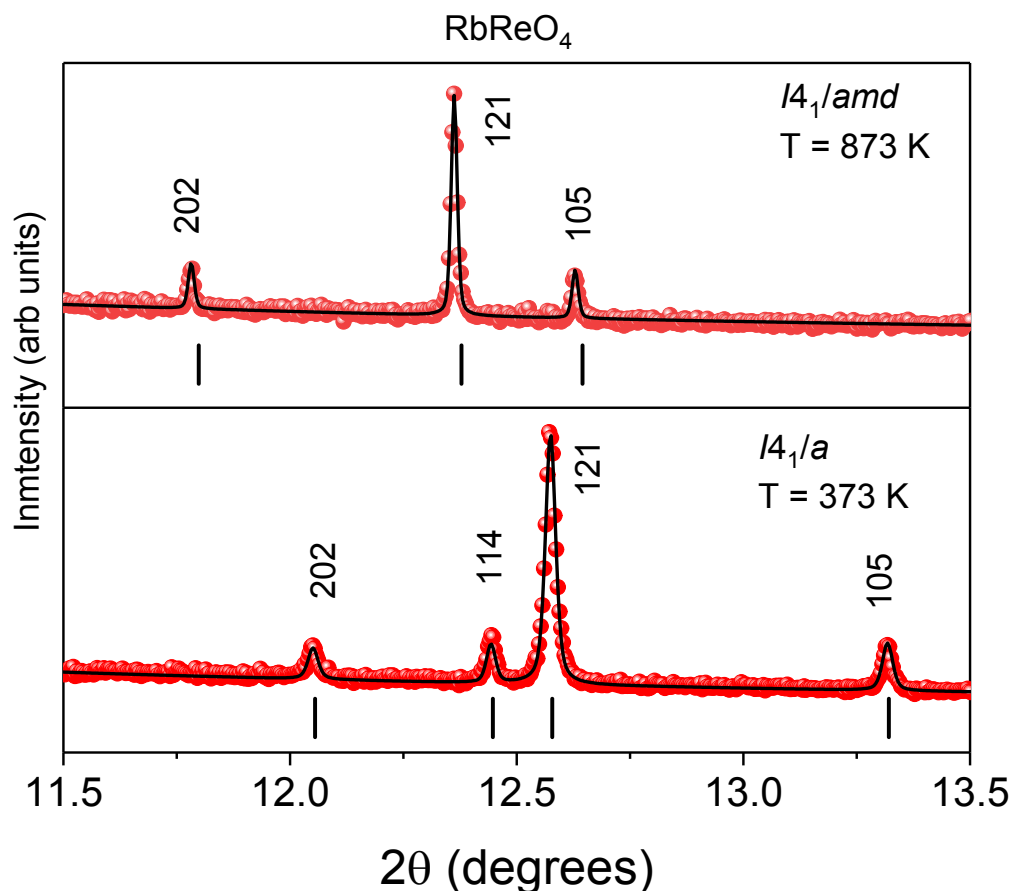


Figure S2 Portions of the SXRD profiles for RbReO₄ illustrating the loss of the (114) reflection indicative of the transition from *I*4₁/*a* to *I*4₁/*amd*.

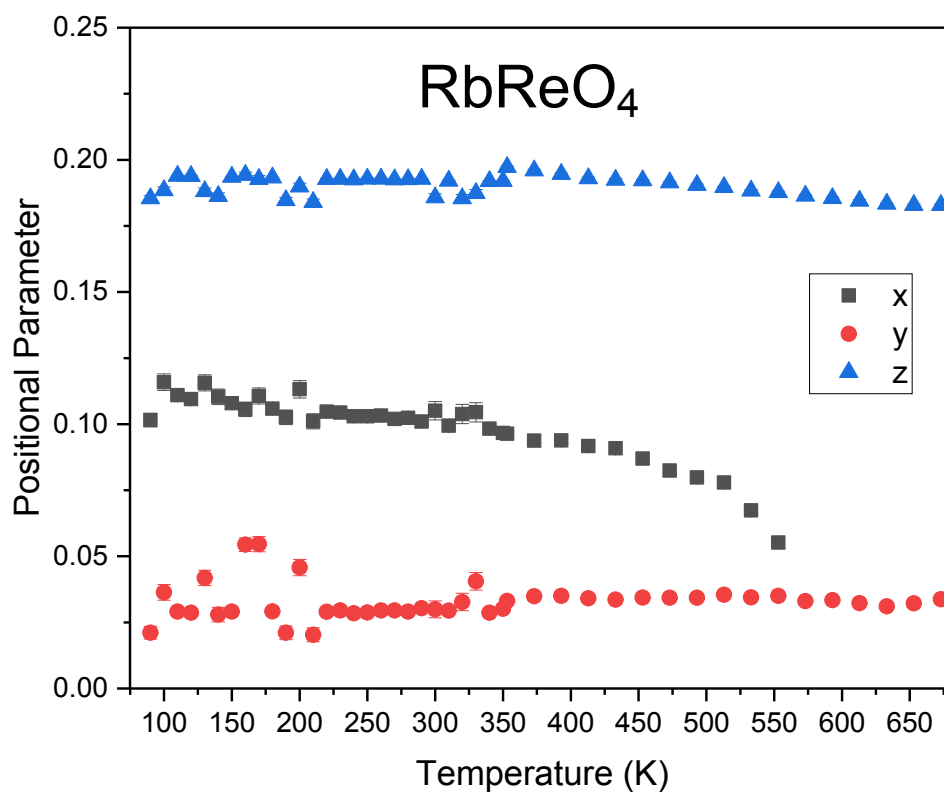


Figure S3. Temperature dependence of the refined oxygen positional parameters for ReReO_4 established by Rietveld refinement against synchrotron X-ray diffraction data. The x value is required to be zero in space group $I4_1/amd$.

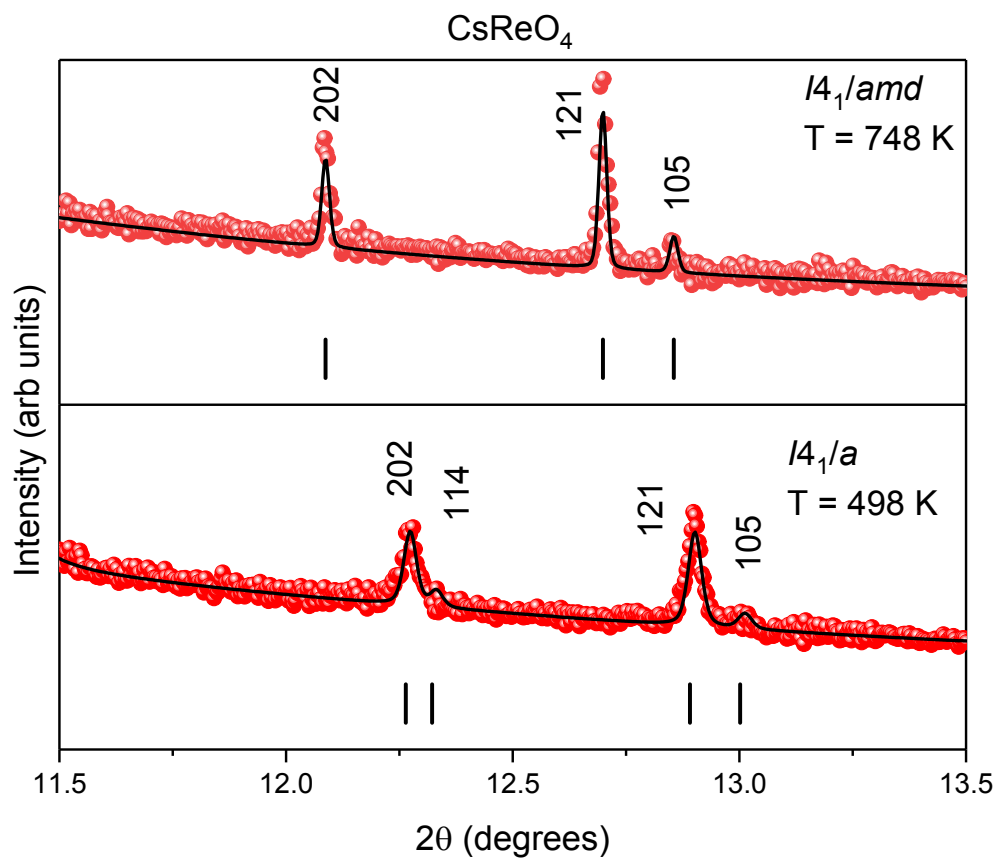


Figure S4 Portions of the SXR D profiles for CsReO₄ illustrating the loss of the (114) reflection indicative of the transition from *I*4₁/*a* to *I*4₁/*amd*.

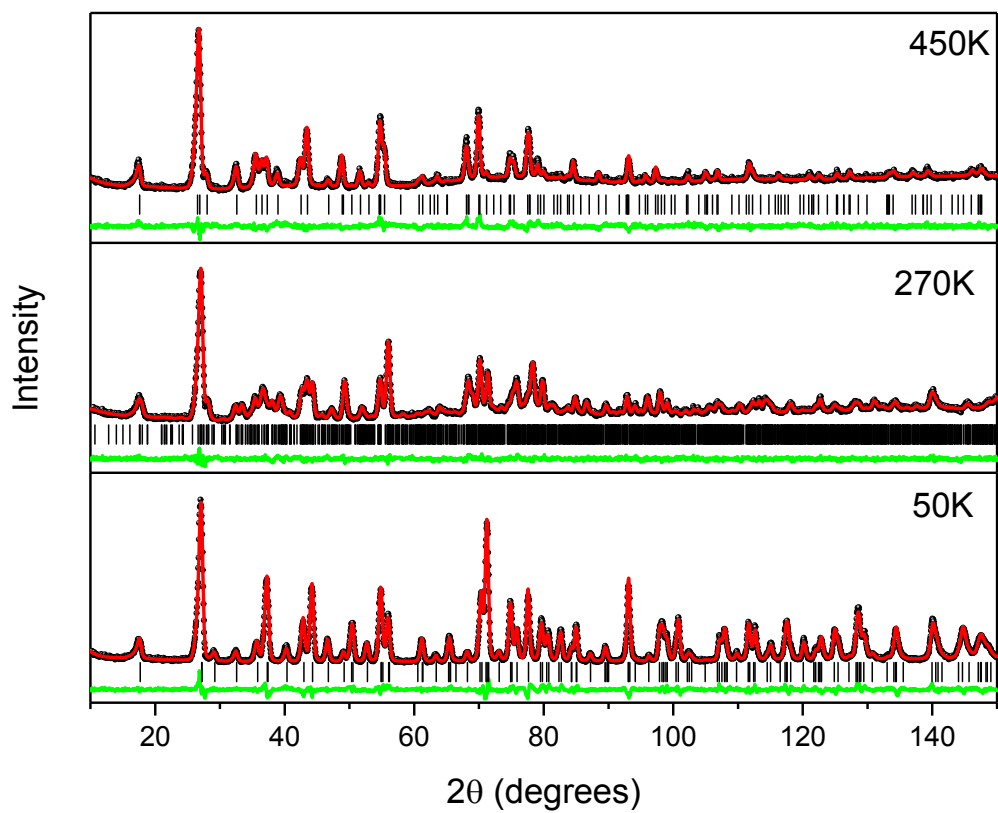


Figure S5 Rietveld fits for TlReO_4 at selected temperatures.

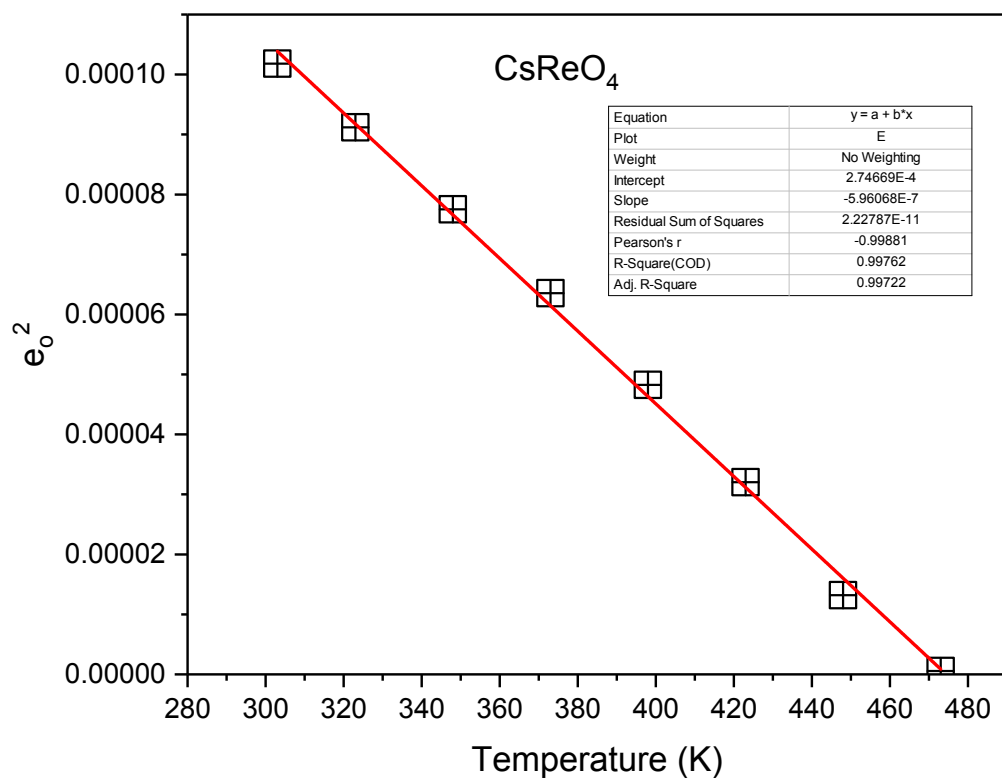


Figure S6. Temperature dependence of the square of the spontaneous strain for CsReO₄ showing the continuous transition to be second order.