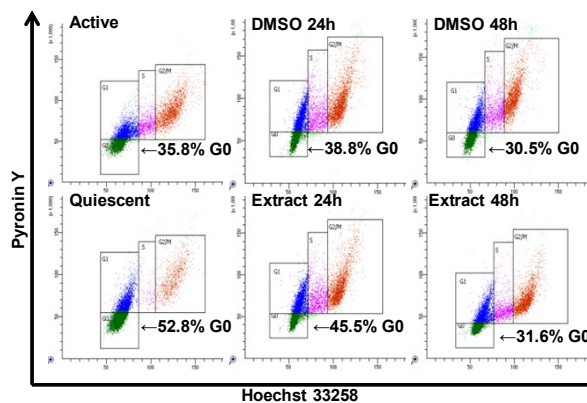


1 **Supplementary Information**

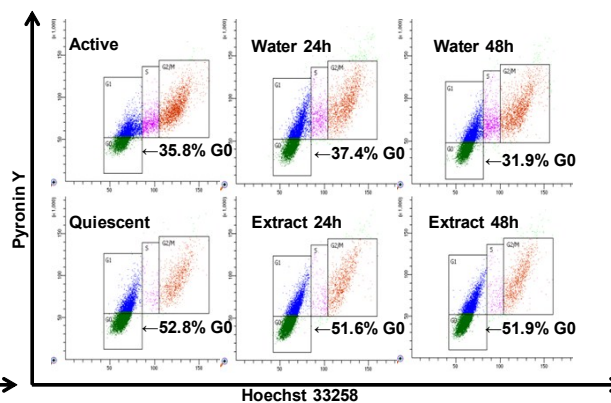
2

3

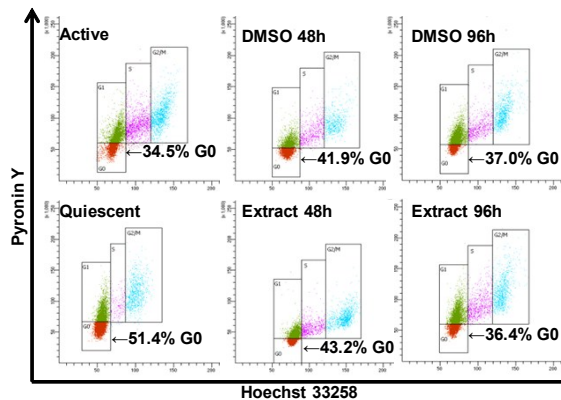
a) PC-3, CPE/hexane



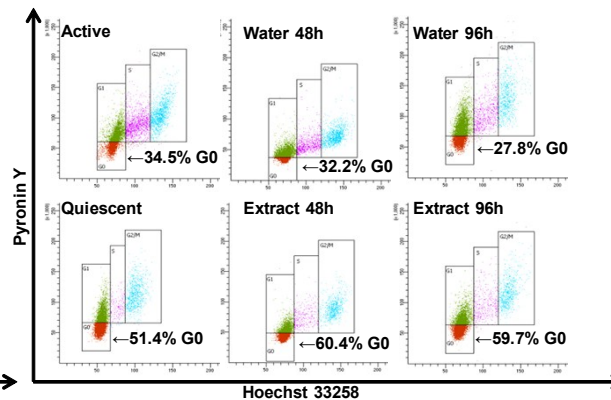
b) PC-3, CPE/water



c) LNCaP, CPE/hexane



d) LNCaP, CPE/water



4

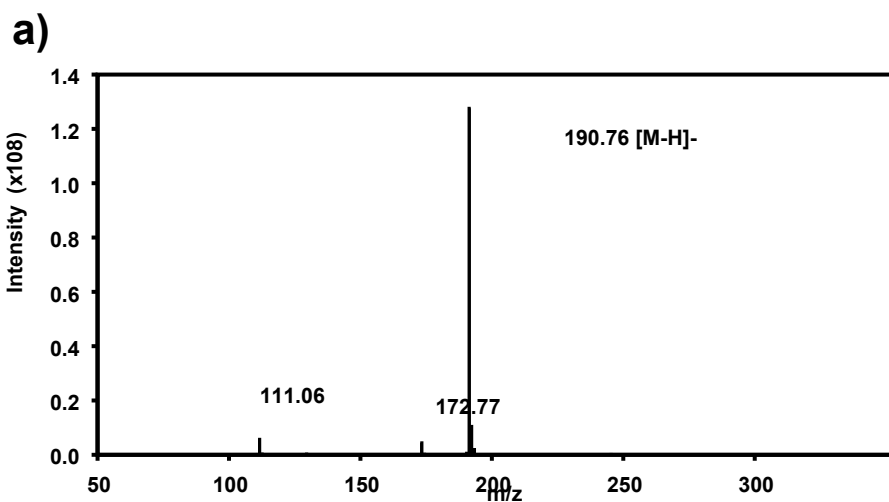
5

6 **Figure S1:** Representative flow cytometer images showing proportion of G0 cells in proliferating, quiescent, and
7 during cell cycle re-entry with CPE at IC₅₀ or control at indicated hour for PC-3 cells treated with CPE/water (a) and
8 CPE/hexane (b) extract, while for LNCaP cells treated with CPE/water (c) and CPE/hexane (d). Proliferating
9 (control cells: non-quiescent cells). Quiescent (quiescent cells: LNCaP after serum withdrawal for 7 days or PC-3
10 after contact inhibition for 3 days).

11

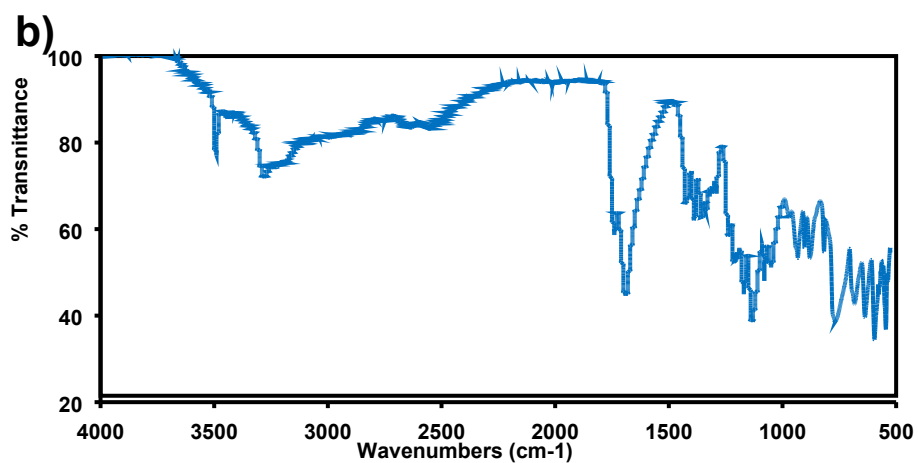
12

13

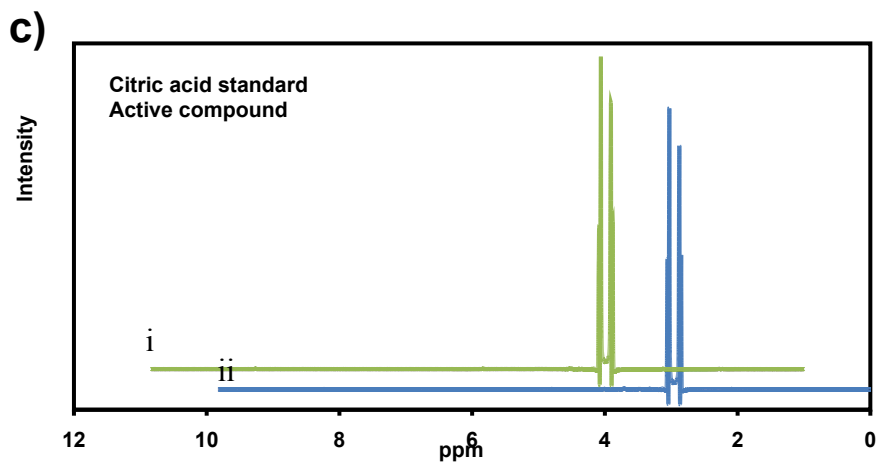


14

15



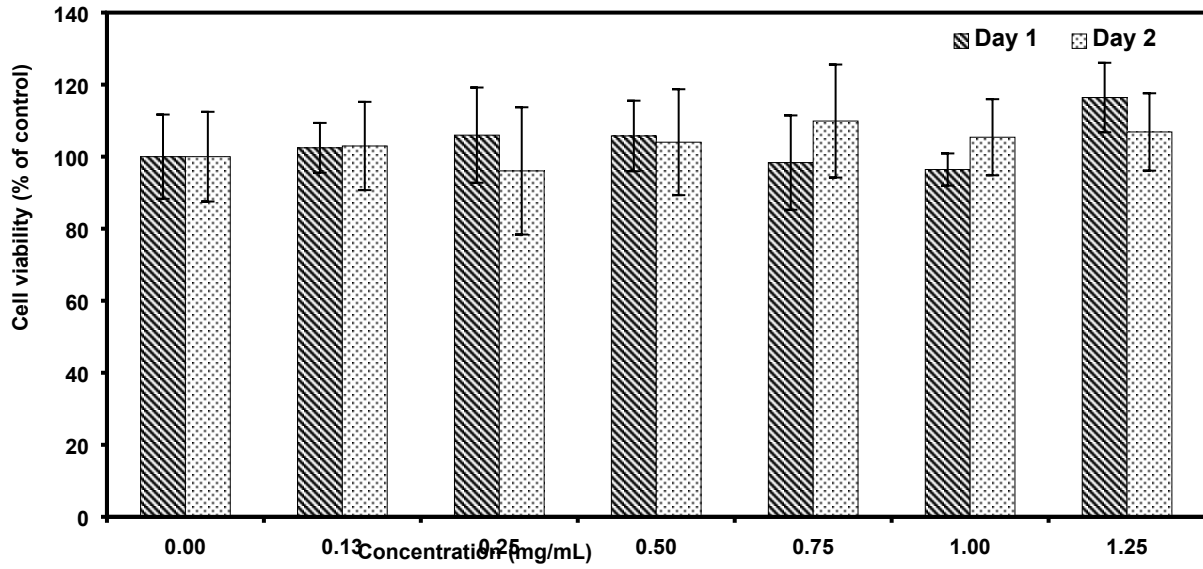
16



17

18 **Figure S2:** APCI-MS spectra (a), FTIR spectrum (b) of the active compound and $^1\text{H-NMR}$ spectrum in D_2O of the
19 citric acid standard and active compound.

20



21

22 **Figure S3:** Cell viability effect of the citric acid standard on the human fibroblast normal GM3348 cells.

23 Data are expressed as the mean±S.D of three independent experiments.

24