

Figure S1: Schematic drawing of coronal brain sections illustrating cytoarchitectonic areas. The anatomical position of the infundibular complex (INc) area within the hypothalamus is shown by major landmarks: A) third ventricle (3V) and median eminence (ME); B) preoptic area (POA); C) Area X; D) higher vocal centre (HVC); E) olfactory bulb.

Figure S1

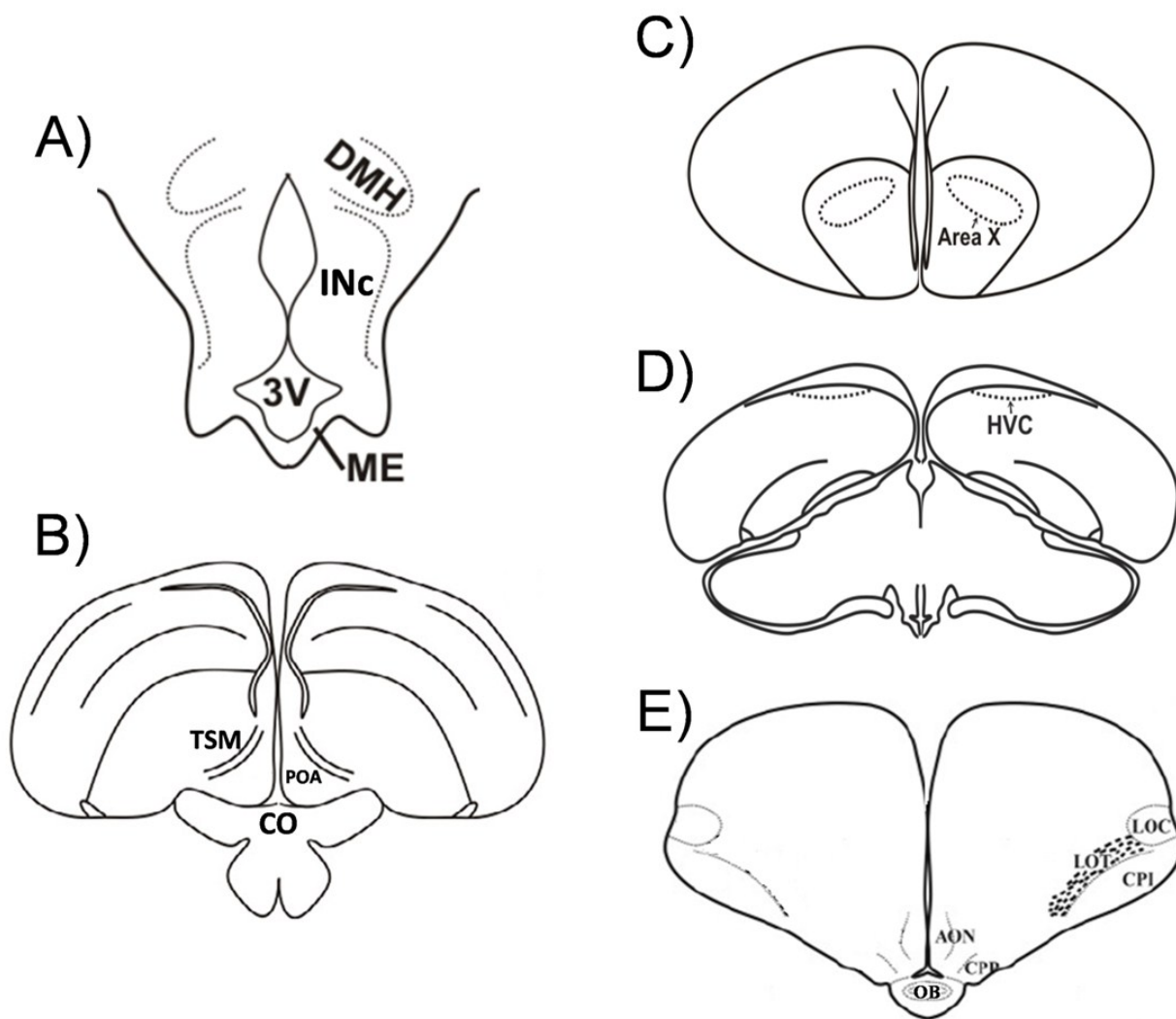


Figure S2: Doublecortin (DCX) immunoreactivity in different brain regions comprising the olfactory system of redheaded buntings (*Emberiza bruniceps*) under natural photoperiod and temperature conditions. Images showing DCX expression at 2-week intervals in the olfactory bulb (OB: A.1 - A.5), anterior olfactory nucleus (AON: B.1 - B.5), CPP- prepiriform cortex (CPP: C.1 - C.5), piriform cortex (CPI: D.1- D.5), lateral olfactory cortex (LOT: E.1 - E.5) and lateral olfactory tract (LC: F.1 - F.5). Right panel: Mean (\pm s.e.m.) DCX-ir cell numbers per frame area ($1,25,000\mu\text{m}^2$) in OB, AON, CPP, CPI, LOT and LOC. An asterisk indicates a significant difference as compared to week 0 ($P < 0.05$; Dunnett's posttest). Scale bar = $50\mu\text{m}$.

Figure S2

