

## Supporting Information

# The use of polyhydroxylated carboxylic acids and lactones to diminish biofilm formation of the pathogenic yeast *Candida albicans*

Olena P. Ishchuk,<sup>a</sup> Olov Sterner,<sup>b</sup> Helena Strevens,<sup>c</sup> Ulf Ellervik,<sup>b</sup> Sophie Manner<sup>b\*</sup>

<sup>a</sup> Department of Biology, Lund University, Sölvegatan 35, SE-223 62 Lund, Sweden.

<sup>b</sup> Centre for Analysis and Synthesis, Centre for Chemistry and Chemical Engineering, Lund University, P.O. Box 124, SE-221 00 Lund, Sweden.

<sup>c</sup> Department of Obstetrics and Gynaecology, Skånes Universitetssjukhus, SE-221 85 Lund, Sweden.

\* Corresponding author. *E-mail address:* sophie.manner@chem.lu.se.

### ***Sensitivity to calcofluor white as indicator of cell wall damage***

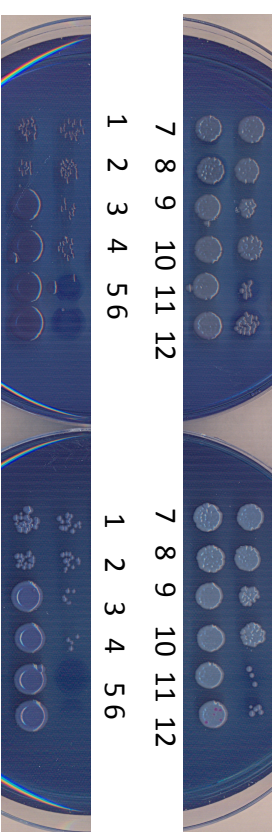
To deduce cell wall damage, cells from biofilm experiments were plated onto YPD solid media with calcofluor white at 10 and 70 µg/mL with or without addition of 0.5 M sucrose (osmotic stabilizer) and incubated at 37 °C.

A

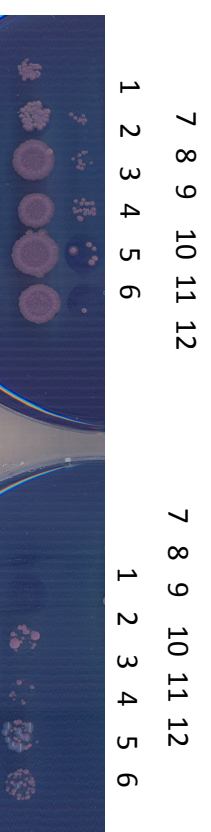
YPD  
Calcofluor White  
70 µg/ml  
Sucrose 0.5M  
Evans blue

YPD  
Calcofluor White  
70 µg/ml  
Evans blue

***C. albicans* SC5314**



***C. glabrata* CBS138**



***C. krusei* silicone isolate A4-1**



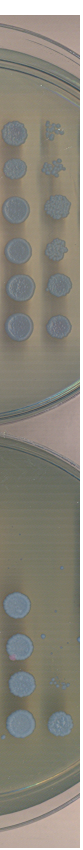
***C. krusei* silicone isolate A5-2**



**B**

YPD  
Calcofluor White  
10 µg/ml  
Sucrose 0.5M  
Evans blue

1 2 3 4 5 6



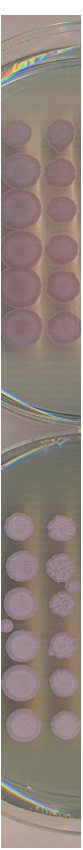
YPD  
Calcofluor White  
10 µg/ml  
Evans blue

1 2 3 4 5 6

***C. tropicalis* silicone isolate U3-3**

7 8 9 10 11 12

1 2 3 4 5 6



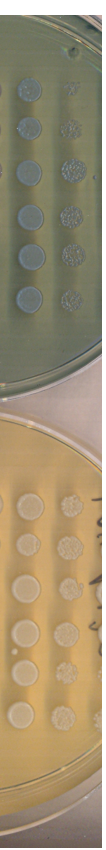
7 8 9 10 11 12

7 8 9 10 11 12

***C. krusei* silicone isolate U3-5**

YPD  
Calcofluor White  
10 µg/ml  
Sucrose 0.5M  
Evans blue

1 2 3 4 5 6



7 8 9 10 11 12

YPD

1 2 3 4 5 6

7 8 9 10 11 12

***C. tropicalis* silicone isolate AG-1**