

Electronic Supplementary Material (ESM) for Publication:

A highly specific and sensitive turn-on fluorescence probe for hypochlorite detection and its bioimaging applications

Lei Jin,^{1,2} Xiaoxue Tan,¹ Ling Zhang,¹ Lihui Dai,¹ Liqiang Sheng,¹ Qingming Wang^{1,*}

Fig. S1. ¹H-NMR of probe **EDPC**.

Fig. S2. ¹³C-NMR of probe **EDPC**.

Fig. S3. ESI mass spectra of probe **EDPC**.

Fig.S4. CIE diagram of the probe **1b** with ClO⁻ (4 equiv.) in Tris-HCl buffer (pH = 7.2, 10 mM, 50% C₂H₅OH).

Fig. S5. The fluorescent intensity of **EDPC** (1.0 μM) with NaOCl (10 equiv.) and other various metal ions (10 equiv.) in Tris-HCl buffer (pH = 7.2, 10 mM, 50% C₂H₅OH)(λ_{ex} =380 nm, slit:3nm/3nm). Inset: Corresponding fluorescent color under UV lamp.

Fig. S6. The fluorescent intensity of **EDPC** (1.0μM) at 475 nm changes upon the addition of various metal ions (10μM) in the presence of ClO⁻ (10μM) in Tris-HCl buffer (pH = 7.2, 10 mM, 50% C₂H₅OH), λ_{ex} = 380 nm, slits: 3nm/3nm.

Fig. S7. The cell viability incubated with probe **EDPC** at various contrations (0, 2, 4, 8, 16 and 32 μM).

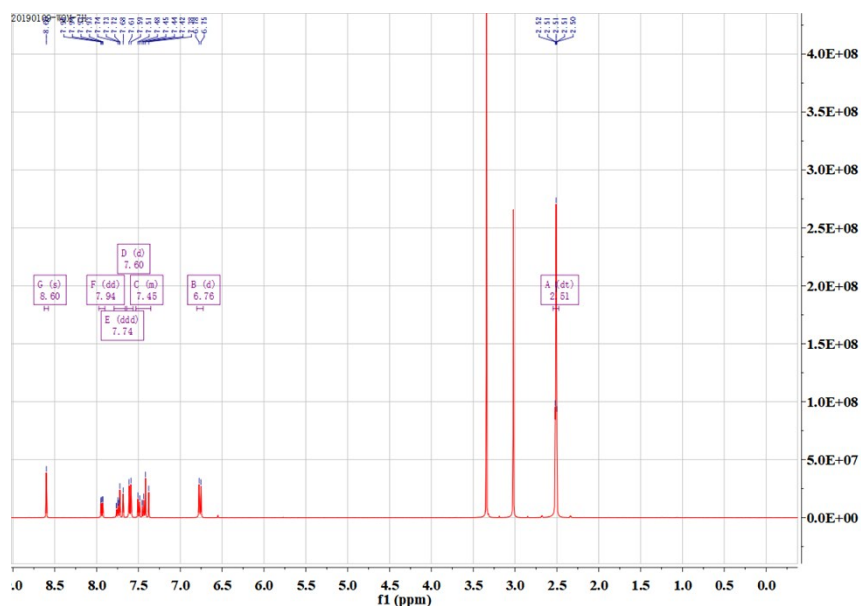


Fig. S1. ¹H-NMR of probe **EDPC**.

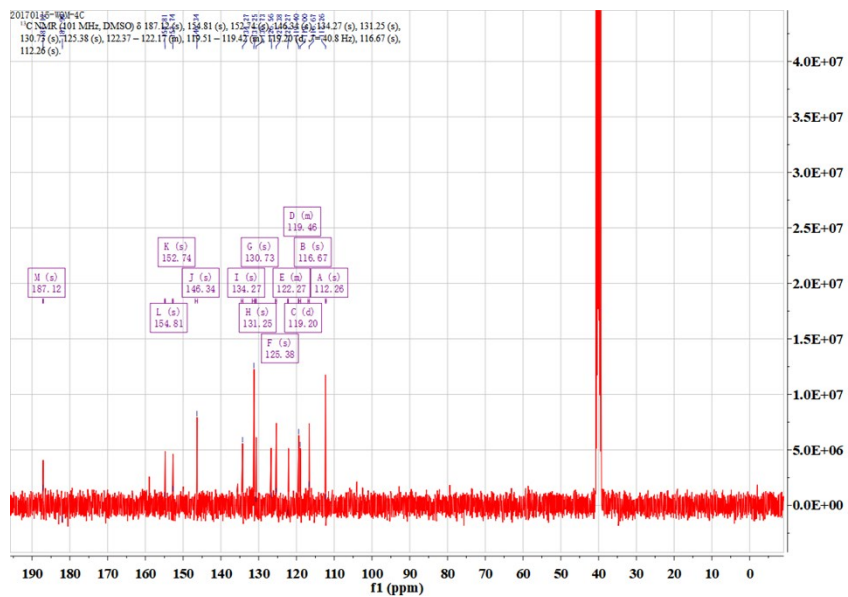


Fig. S2. ¹³C-NMR of probe EDPC.

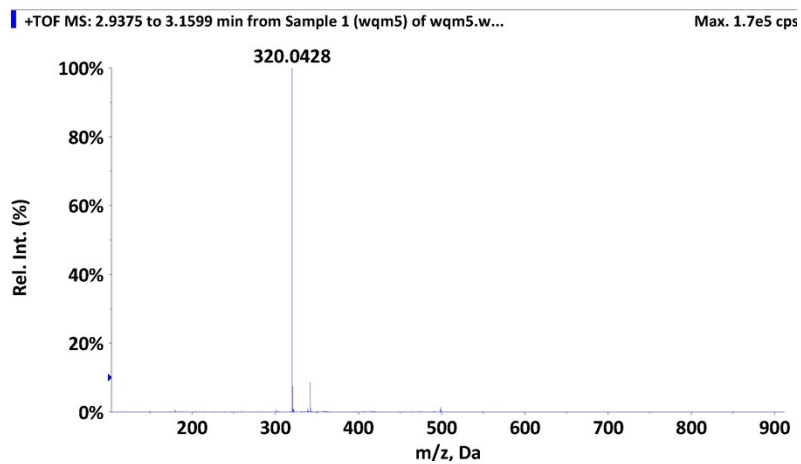


Fig. S3. ESI mass spectra of probe EDPC.

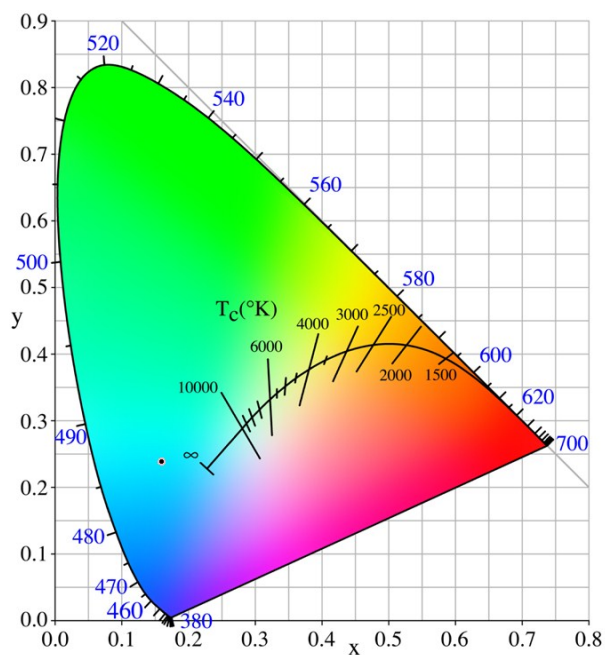


Fig.S4. CIE diagram of the probe **EDPC** with ClO^- (4 equiv.) in Tris-HCl buffer ($\text{pH} = 7.2$, 10 mM, 50% $\text{C}_2\text{H}_5\text{OH}$).

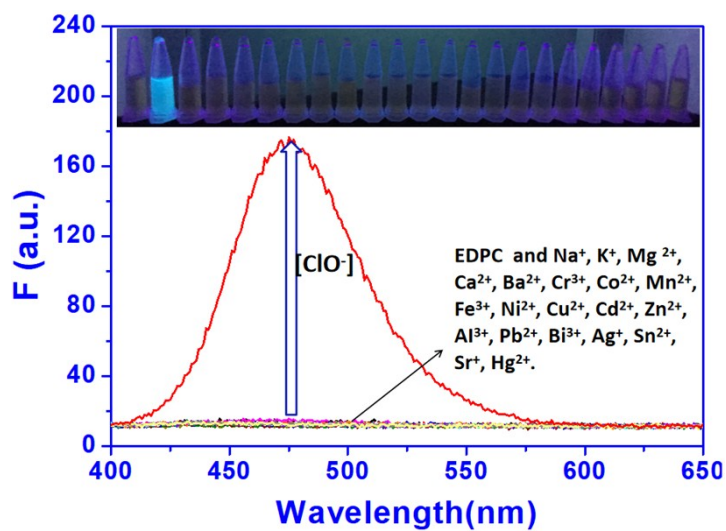


Fig. S5. The fluorescent intensity of **EDPC** ($1.0 \mu\text{M}$) with NaOCl (10 equiv.) and other various metal ions (10 equiv.) in Tris-HCl buffer ($\text{pH} = 7.2$, 10 mM, 50% $\text{C}_2\text{H}_5\text{OH}$) ($\lambda_{\text{ex}} = 380 \text{ nm}$, slit:3nm/3nm). Inset: Corresponding fluorescent color under UV lamp.

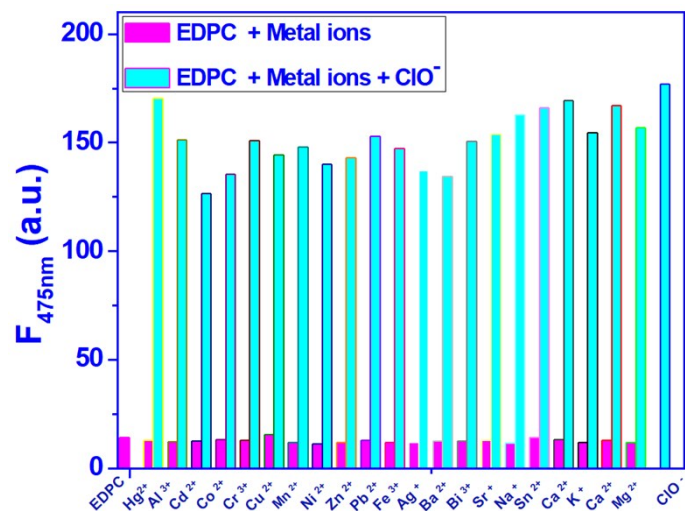


Fig. S6. The fluorescent intensity of **EDPC** ($1.0\mu\text{M}$) at 475 nm changes upon the addition of various metal ions ($10\mu\text{M}$) in the presence of ClO^- ($10\mu\text{M}$) in Tris-HCl buffer ($\text{pH} = 7.2$, 10 mM , $50\% \text{ C}_2\text{H}_5\text{OH}$), $\lambda_{\text{ex}} = 380\text{ nm}$, slits: $3\text{nm}/3\text{nm}$.

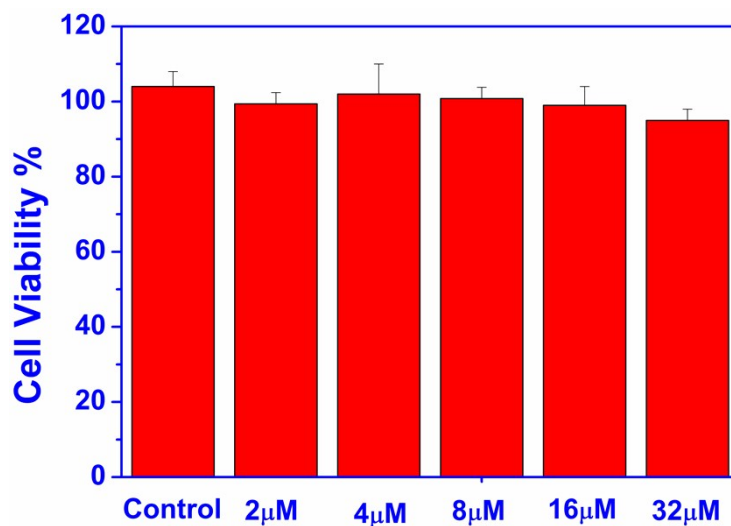


Fig. S7. The cell viability incubated with probe **EDPC** at various concentrations (0 , 2 , 4 , 8 , 16 and $32\mu\text{M}$).