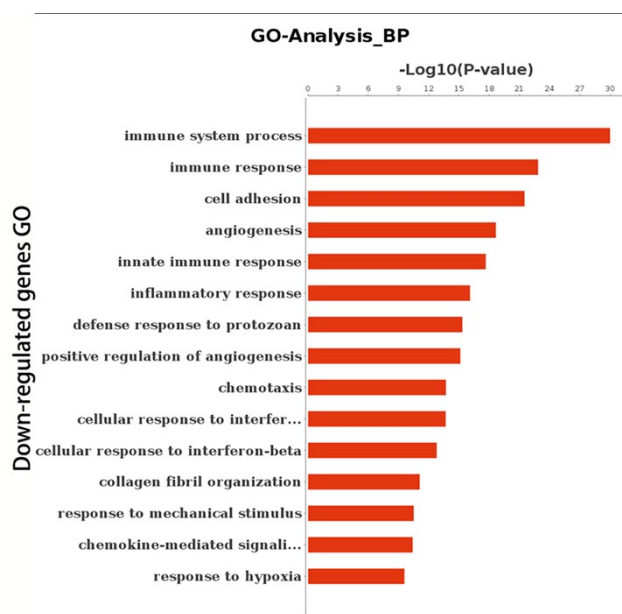
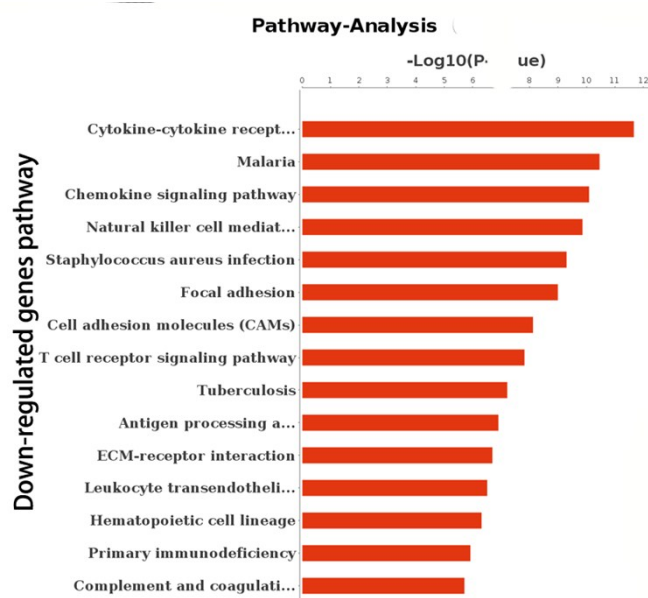


## Supplemental Figure



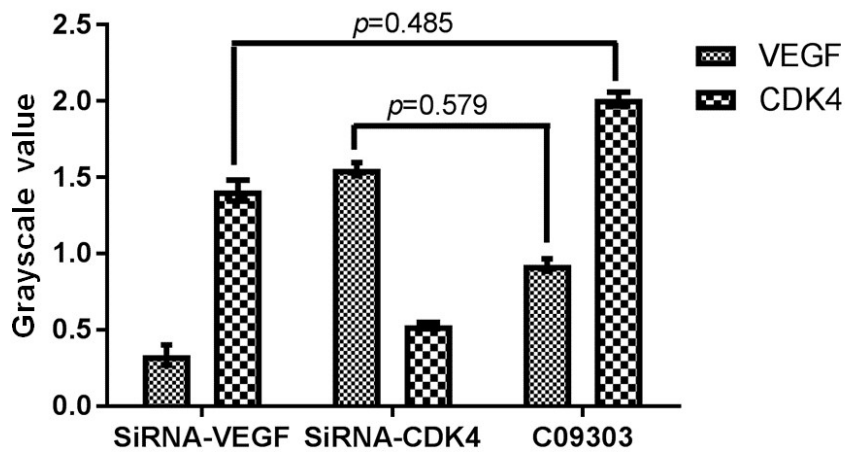
### Supplemental Figure 1

Significantly down-regulated genes were analyzed for GO enrichment vs. C21391. GO indicates gene ontology.



### Supplemental Figure 2

Significantly down-regulated genes were analyzed for pathway enrichment vs. C21391.



**Supplemental Figure 3**

VEGF or CDK4 expression in C09303 attenuated using a targeting RNAi system was analyzed by quantitative of relative grayscale value. This value of VEGF between siRNA-CDK4 sample and C09093 sample shows no significant difference ( $P > 0.05$ ).