

Supplemental Information

Structural characterization of phosphoethanolamine-modified lipid

A from probiotic *Escherichia coli* strain Nissle 1917

Sung-Hyun Jo^{a,‡}, Han-Gyu Park^{a,‡}, Won-Suk Song^b, Seong-Min Kim^a, Eun-Jung Kim^c, Yung-Hun Yang^d, Jae-Seok Kim^e, Byung-Gee Kim^b and Yun-Gon Kim^{a,*}

^aDepartment of Chemical Engineering, Soongsil University, Seoul 06978, Korea

^bSchool of Chemical and Biological Engineering, Seoul National University, Seoul 08826, Korea

^cInstitute of Molecular Biology and Genetics, Seoul National University, Seoul 08826, Korea

^dDepartment of Biological Engineering, Konkuk University, Seoul 05029, Korea

^eDepartment of Laboratory Medicine, Kangdong Sacred Heart Hospital, Hallym University College of Medicine, Seoul 05355, Korea

*Corresponding author contact information:

Yun-Gon Kim, Prof.

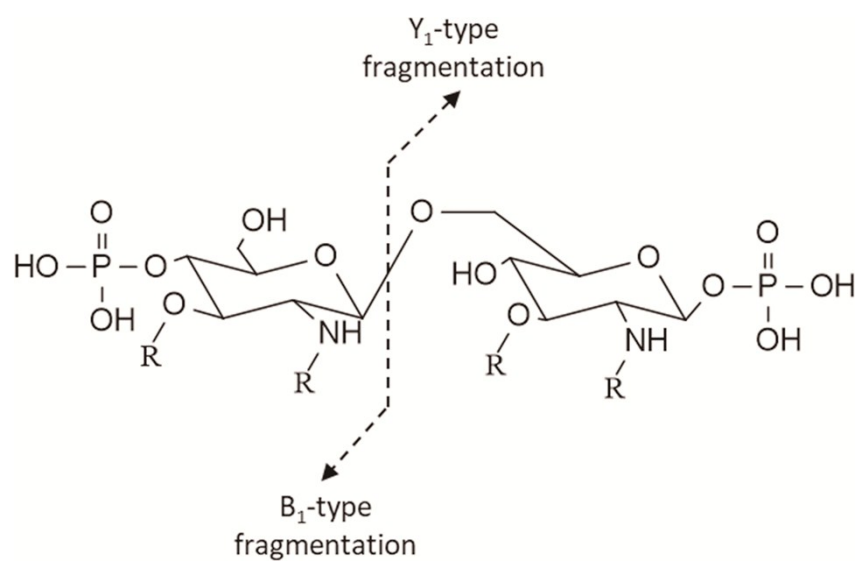
Department of Chemical Engineering, Soongsil University

369 Sangdo-Ro, Seoul, Korea

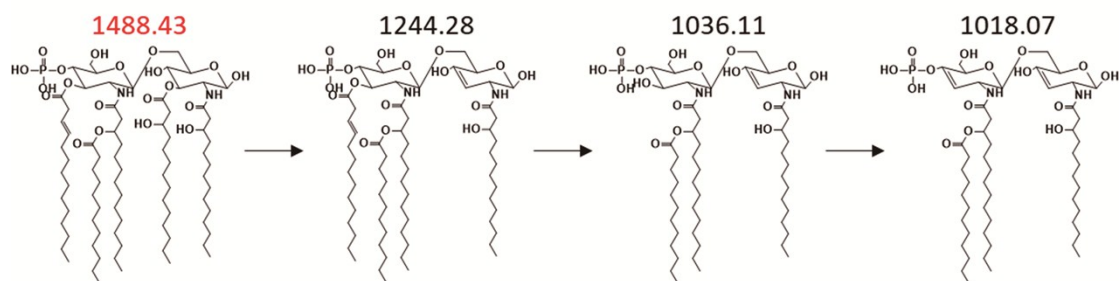
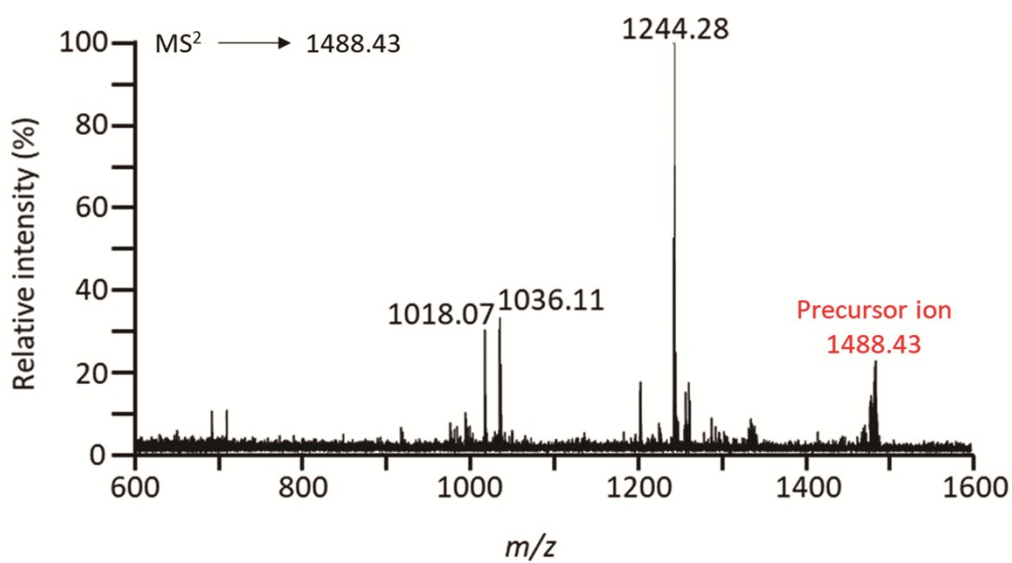
E-mail: ygkim@ssu.ac.kr

Phone: +82-2-828-7099

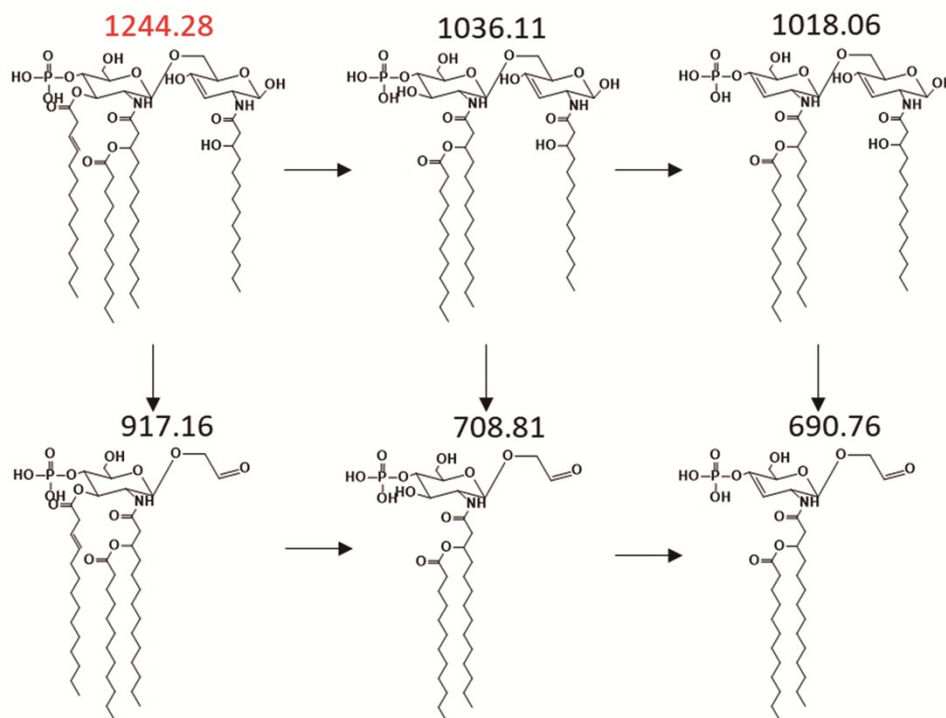
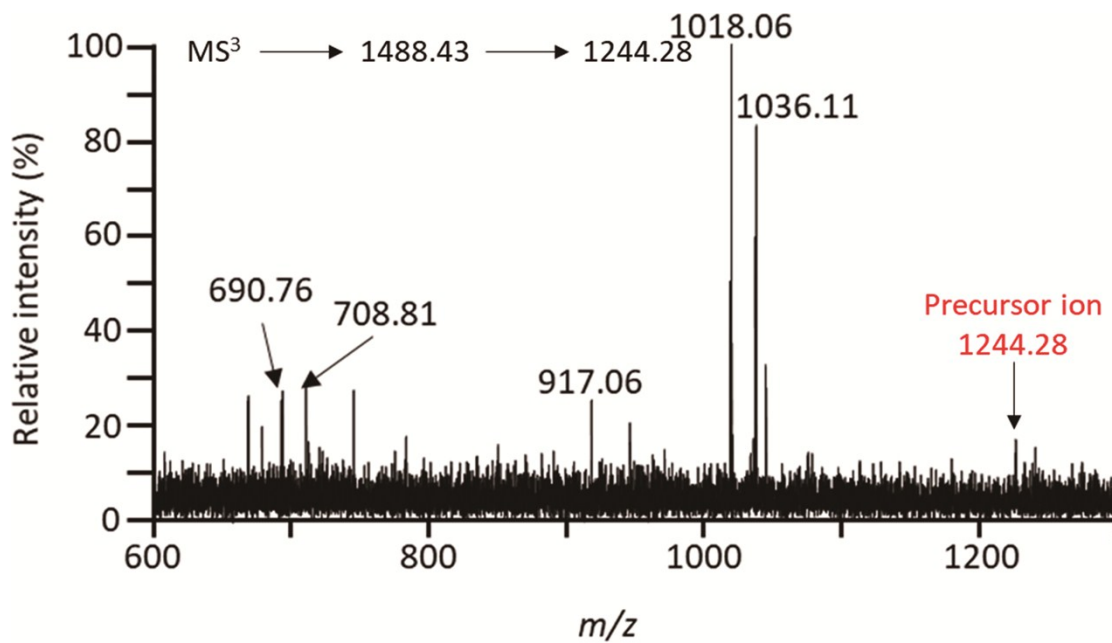
‡These authors contributed equally to this work.



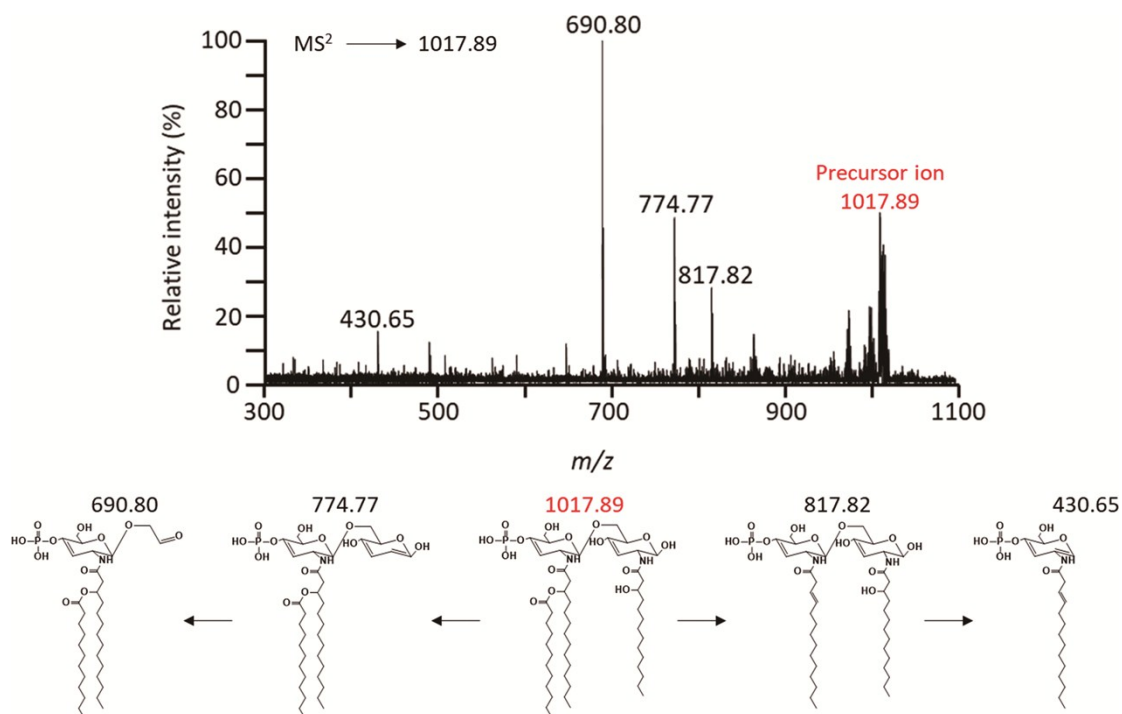
Supplementary Figure 1. Inter-ring fragmentation pattern.



Supplementary Figure 2. Negative-ion MALDI-QIT TOF MS² spectrum of parent peak at m/z 1488.43 and fragment structures. Precursor ion was indicated by the mass to charge ratio of the red letter.



Supplementary Figure 3. Negative-ion MALDI-QIT TOF MS³ spectrum of parent peak at m/z 1244.28 and fragment structures. Precursor ion was indicated by the mass to charge ratio of the red letter.



Supplementary Figure 4. Negative-ion MALDI-QIT TOF MS² spectrum of parent peak at m/z 1017.89 and fragment structures. Precursor ion was indicated by the mass to charge ratio of the red letter.