

Supplementary Information

In vitro and in vivo evaluation of a novel mitomycin nanomicelle delivery system

Hongmei Yang^a, Miao Wang^a, Yihe Huang^{b,c}, Qiaoyu Qiao^a, Chunjie Zhao^a, Min
Zhao^{*,a}

^aSchool of Pharmacy, Shenyang Pharmaceutical University, Shenyang 110016, China;

^bCollege of Chemistry, Liaoning University, Shenyang 110036, China;

^cShenyang Medical College, Shenyang 110034, China

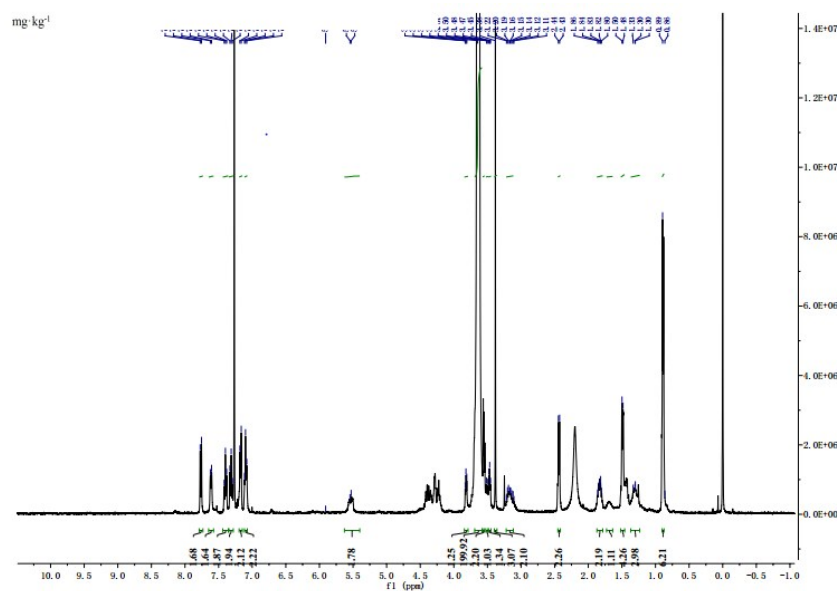


Fig. S1. ¹H NMR spectra of PEG-FIbu in CDCl₃

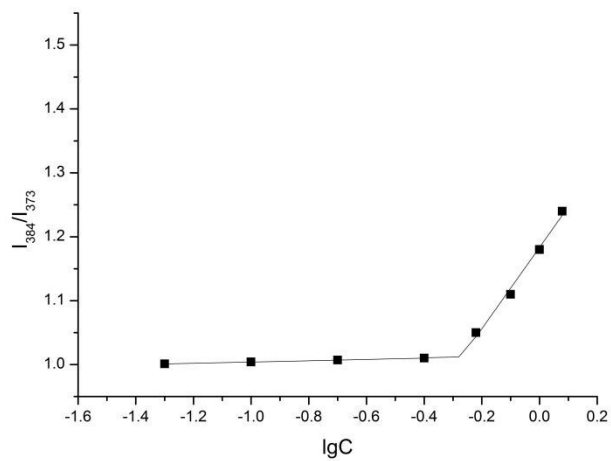


Fig. S2. Critical micelle concentration (CMC) of PEG-FIbu micelles

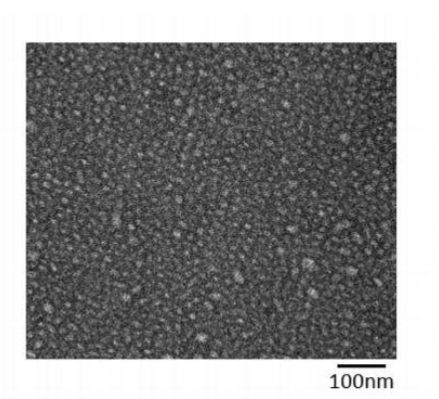


Fig. S3. TEM image of PEG-FIbu micelles

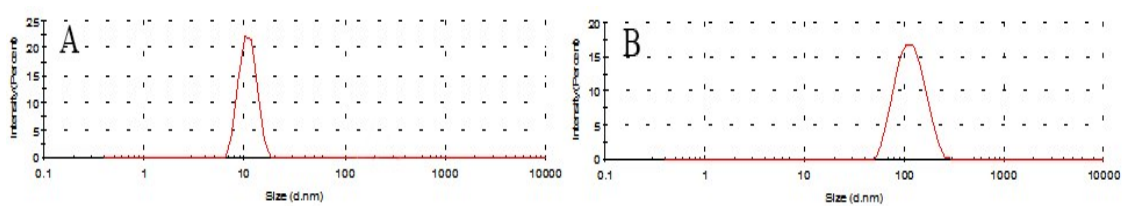


Fig. S4. Particle size distribution of PEG-FIbu (A) and MMC-loaded PEG-FIbu micelles (PEG-FIbu to MMC = 2.5:1, mol/mol) (B)

Table S1 Gradient elution program

Time (min)	A%	B%
0	90	10
2	70	30
4	70	30
5	20	80
7	5	95
8	90	10
