

Supporting Information for

Guided cellular orientation concurrently with cell density gradient on butterfly wings

*Jie Lu,^a Ye Pan,^{*a} Qifeng Zhong,^b Bing Liu^c*

^a School of Material Science and Engineering, Southeast University, Nanjing 210096,

China E-mail: panye@seu.edu.cn

^b Department of Pharmaceutical Equipment and Electronic Instruments, School of Engineering, China Pharmaceutical University, Nanjing 210009, China

^c Department of Pharmaceutical Equipment and Electronic Instruments, School of Engineering, China Pharmaceutical University, Nanjing 210009, China

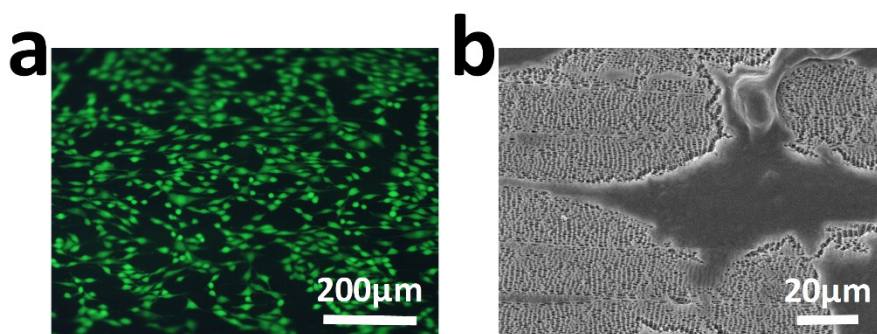


Fig. S1 Fluorescence microscopy image and SEM image of NIH-3T3 fibroblasts cultured on the hybrid substrate patterned stripes-like structure.

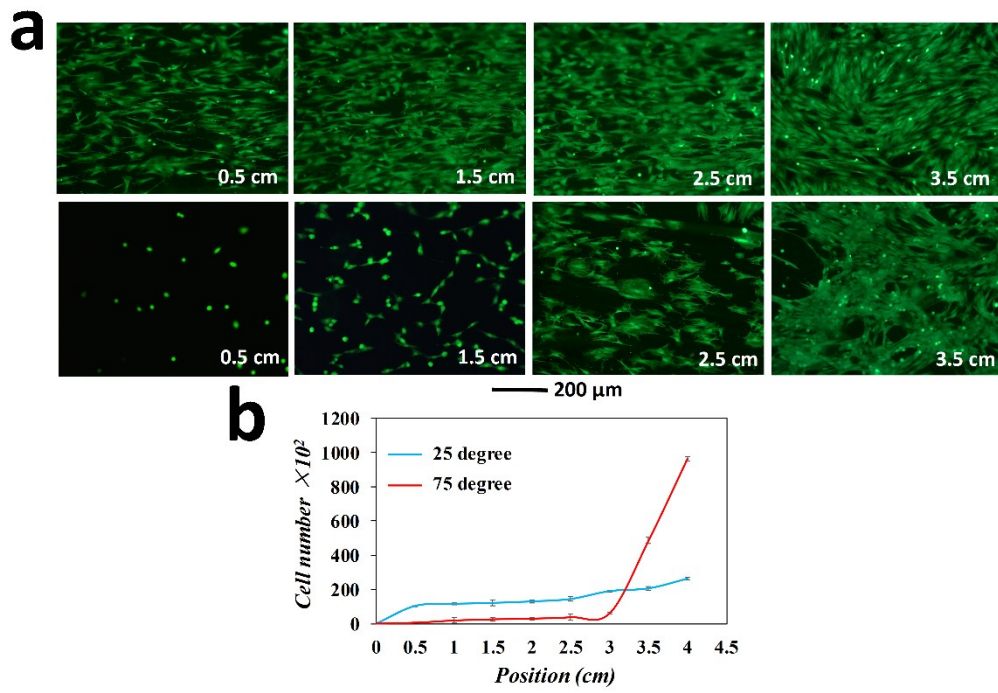


Fig. S2 (a) Fluorescence images of gradient in cell density generated on the M. Menelaus wing at tilt angle of 25 degree (the upper line) and 75 degree (the lower line); (b) cell density calculation along the wing.