

## Supplementary information

### **Novel camphor-based pyrimidine derivatives induced cancer cell death through ROS-mediated mitochondrial apoptosis pathway**

Yan Zhang<sup>a</sup>, Yunyun Wang<sup>a</sup>, Yuxun Zhao<sup>a</sup>, Wen Gu<sup>a,c</sup>, Yongqiang Zhu<sup>b\*</sup>, Shifa Wang<sup>a,c\*</sup>

<sup>a</sup> College of Chemical Engineering, Nanjing Forestry University, Nanjing, 210037, P. R. China

<sup>b</sup> Jiangsu Chia Tai Fenghai Pharmaceutical Co. Ltd, Nanjing, 210046, P. R. China

<sup>c</sup> Co-Innovation Center of Efficient Processing and Utilization of Forest Resources, Nanjing Forestry University, Nanjing, 210037, P. R. China

\*Corresponding author at: College of Chemical Engineering, Nanjing Forestry University, Nanjing, 210037, P. R. China.

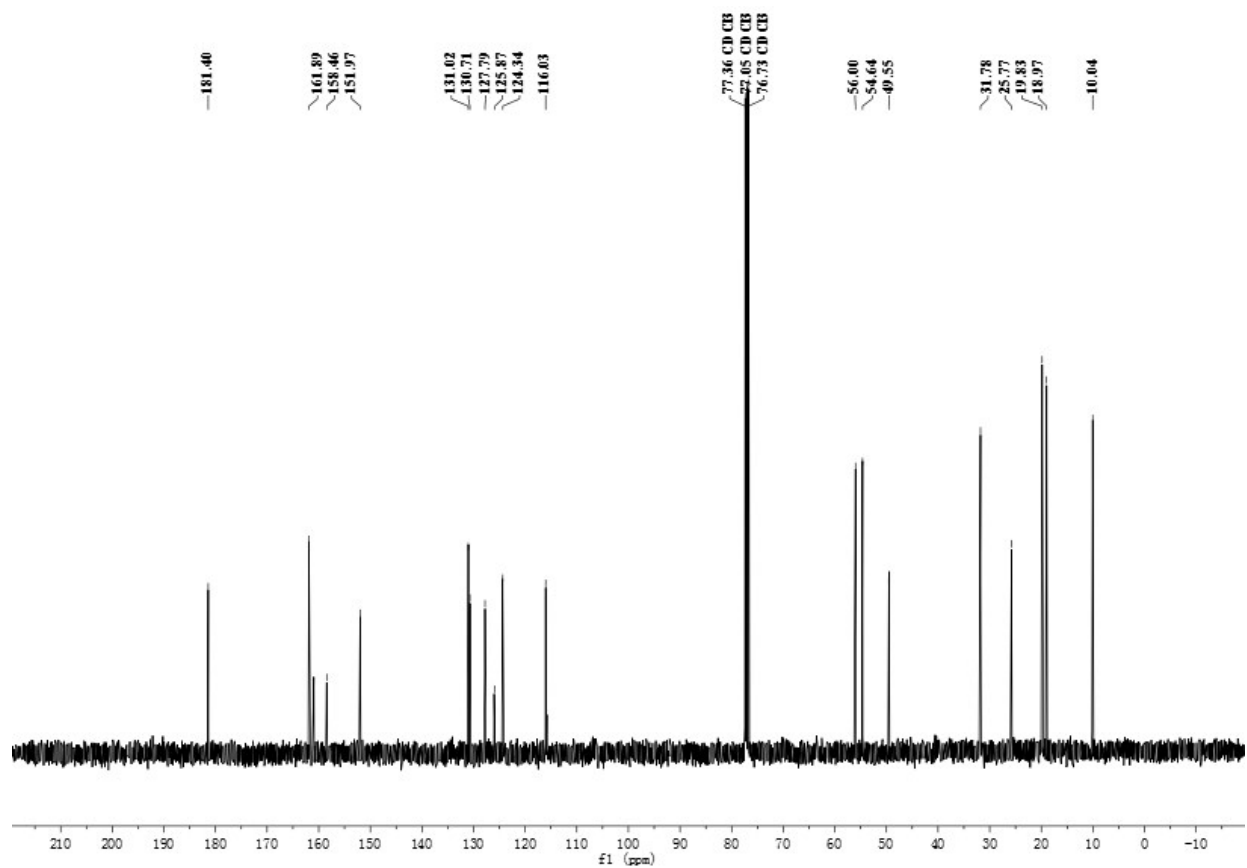
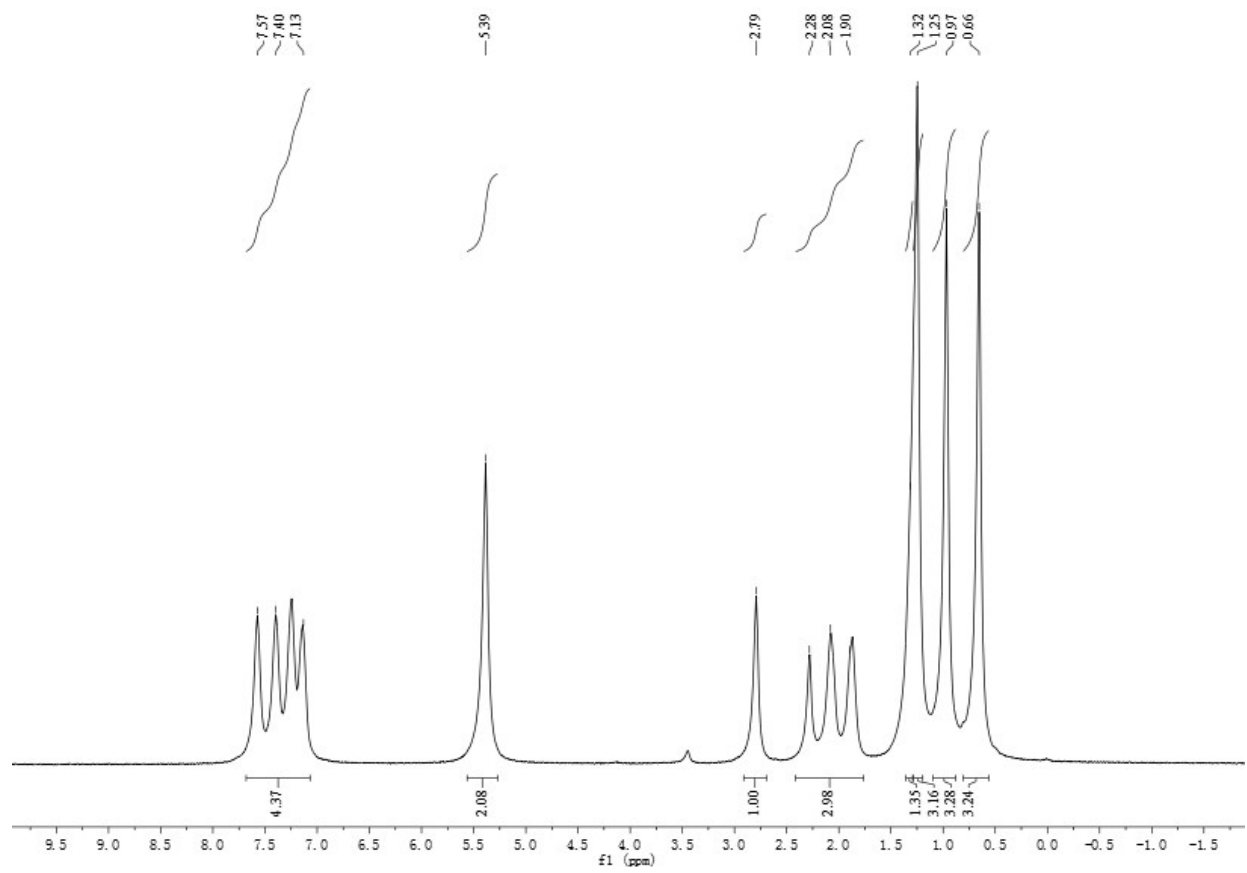
E-mail address: wangshifa65@163.com (S. Wang).

**Table S1** Crystallographic data of compound **3f**

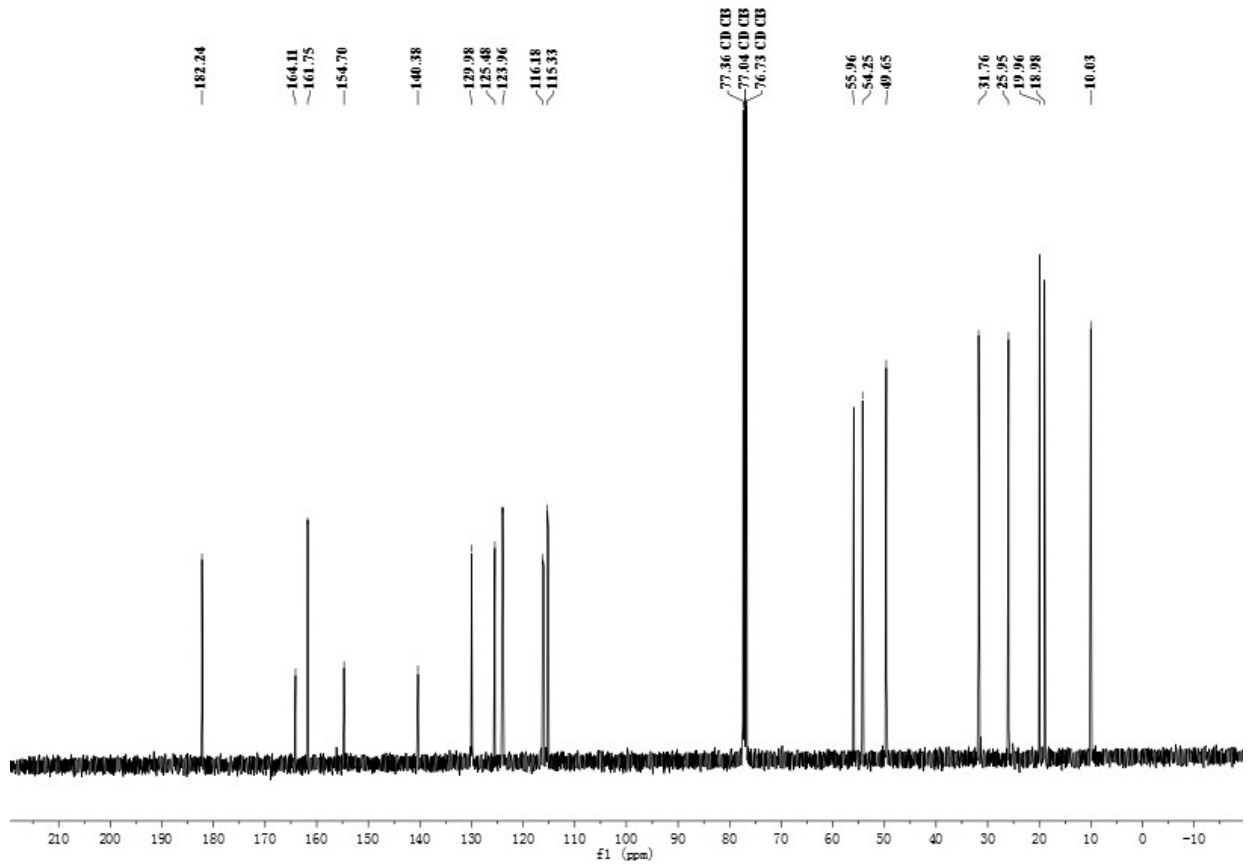
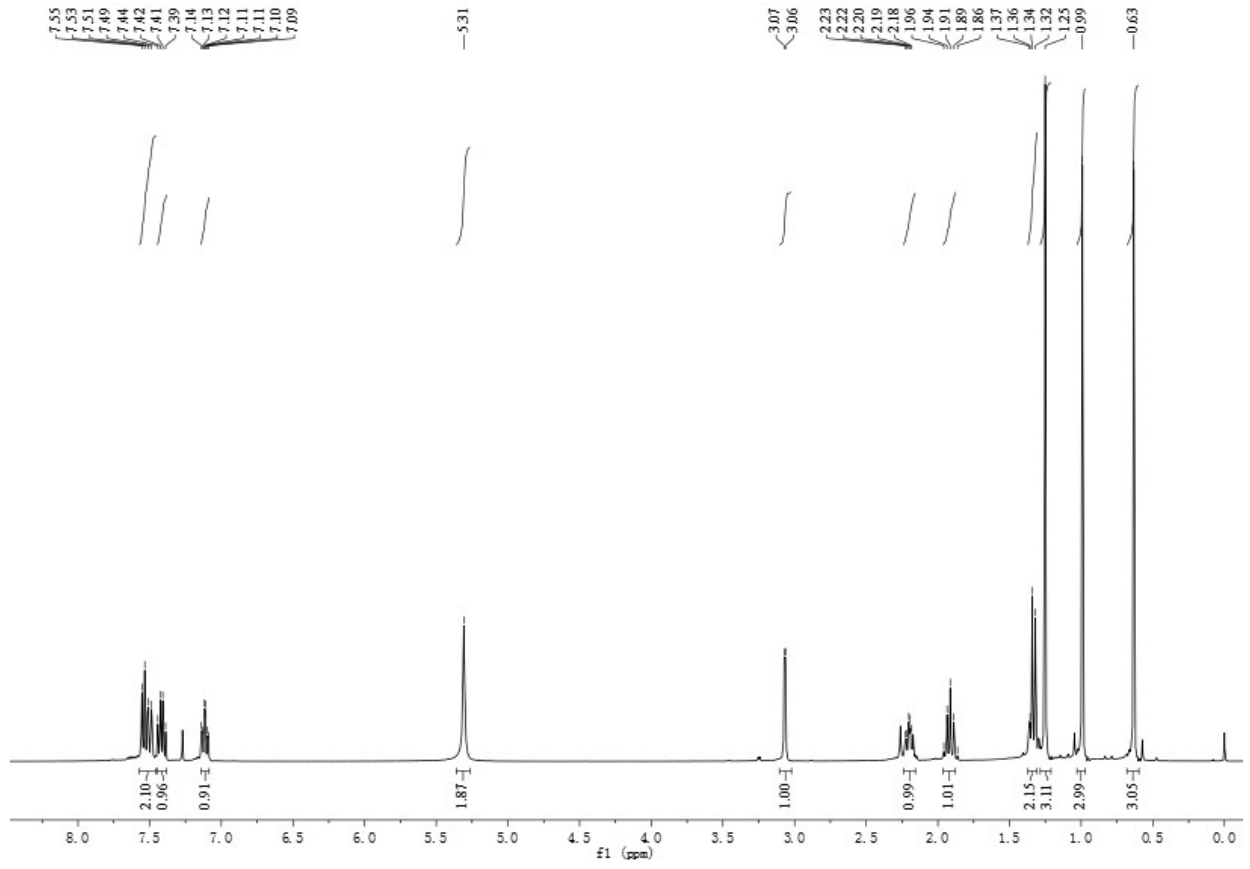
Parameter	Value
Empirical formula	C <sub>18</sub> H <sub>20</sub> Cl N <sub>3</sub>
Mr	313.82
space group	<i>P</i> -1
a [Å]	6.9895(2)
b [Å]	8.6676(3)
c [Å]	13.6291(5)
α [deg]	76.606(2)
β [deg]	81.336(2)
γ [deg]	79.948(2)
Volume [Å <sup>3</sup> ]	785.64(5)
Z	2
D <sub>c</sub> [mg/m <sup>3</sup> ]	1.327
F (000)	332
T [K]	130(2)
wavelength [Å]	0.71073
absorption coefficient [mm <sup>-1</sup> ]	0.243
completeness to theta	30.54 (96.3 %)
reflections collected/unique	16738/4625 [R(int) = 0.0533]
data/restraints/parameters	4625/0/199
R <sub>1</sub> , wR <sub>2</sub> [I>2σ(I)]	0.0679, 0.1356
R <sub>1</sub> , wR <sub>2</sub> (all data)	0.1118, 0.1543
goodness of fit on F <sup>2</sup>	1.013
largest diff. peak and hole [e.Å <sup>-3</sup> ]	0.610 and -0.301

$^1\text{H}$  NMR spectra,  $^{13}\text{C}$  NMR and HRMS for target compounds.

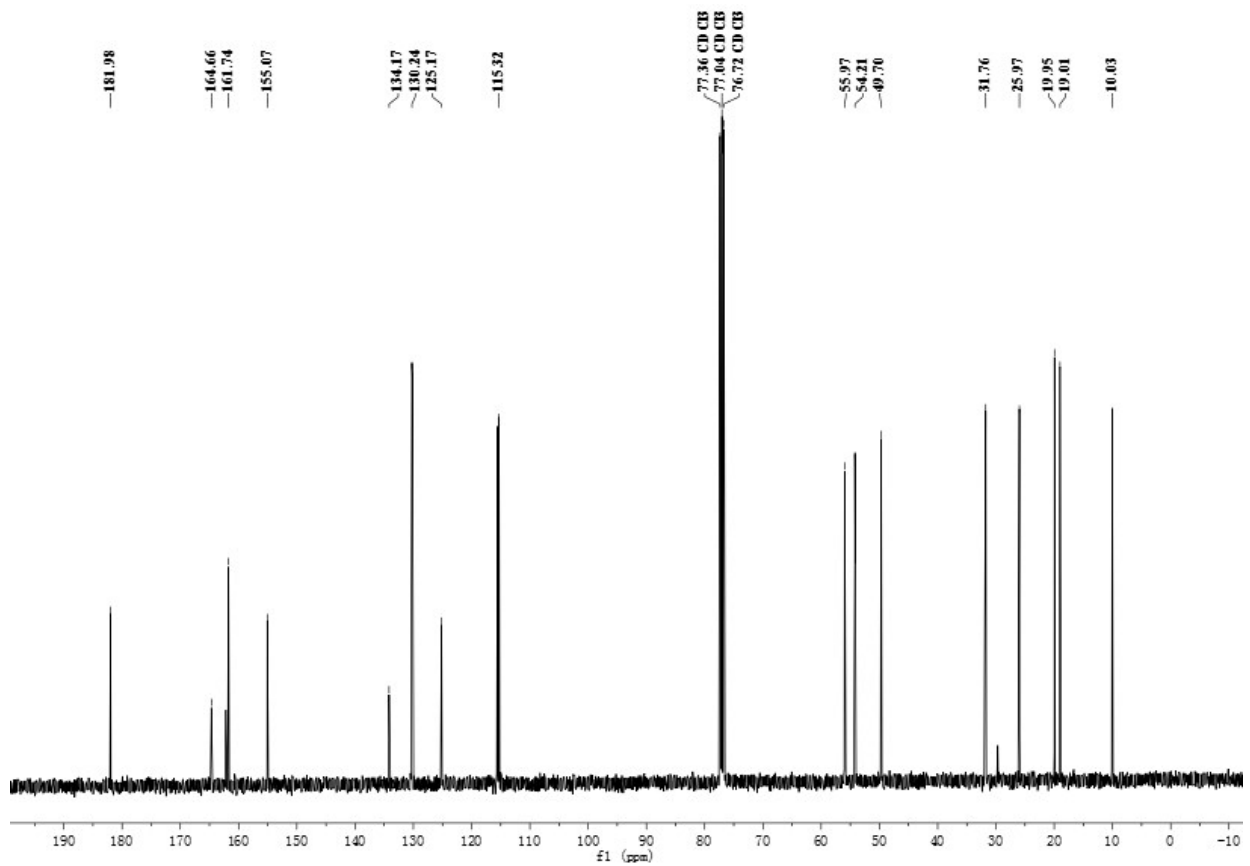
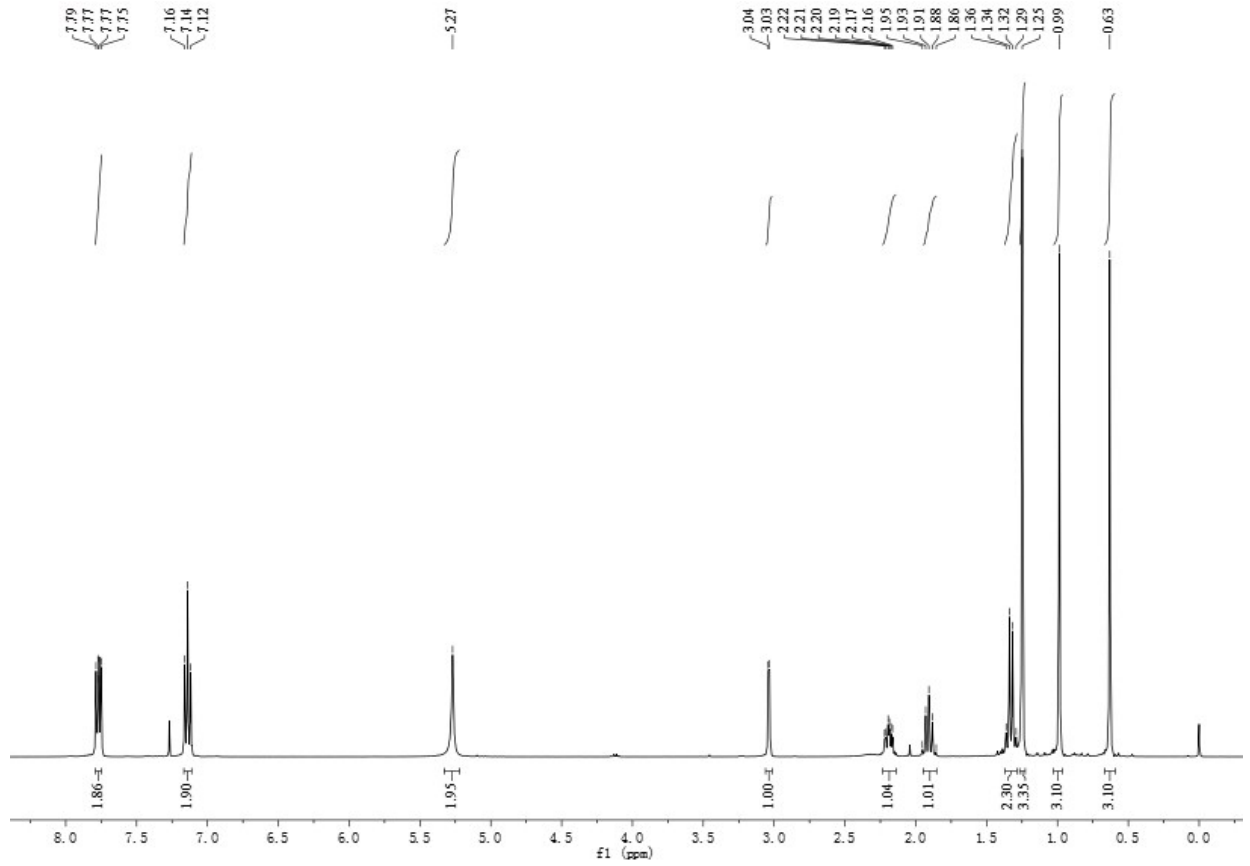
3a



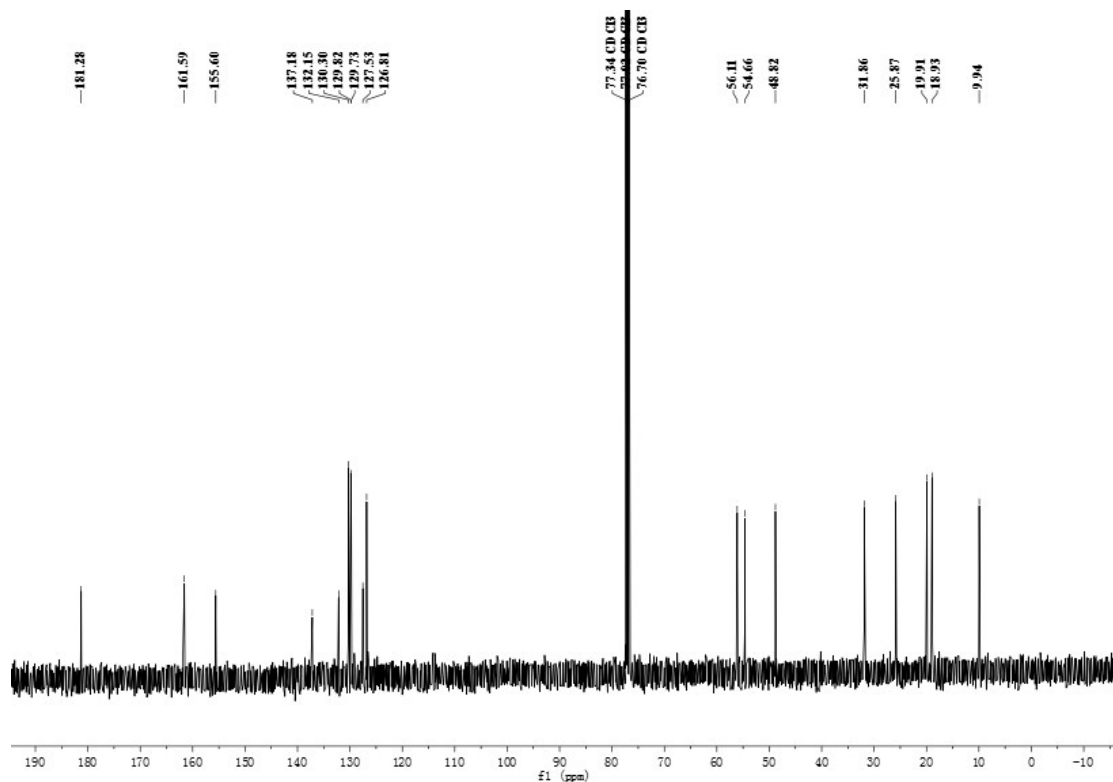
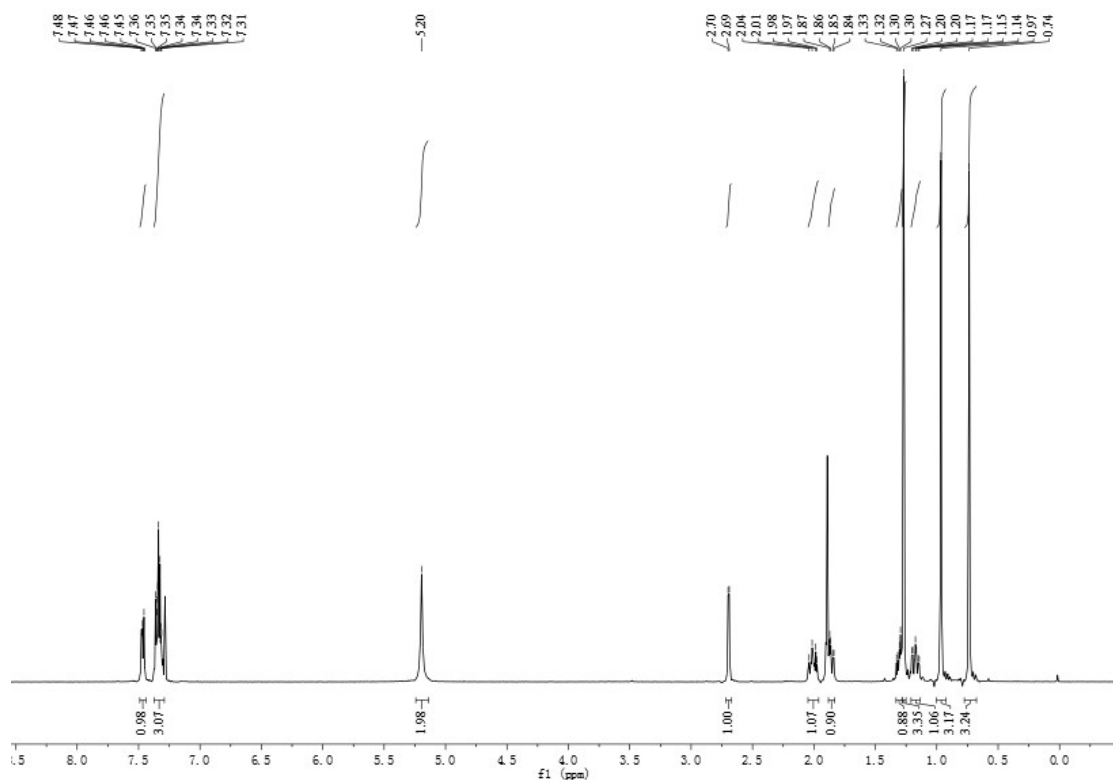
3b



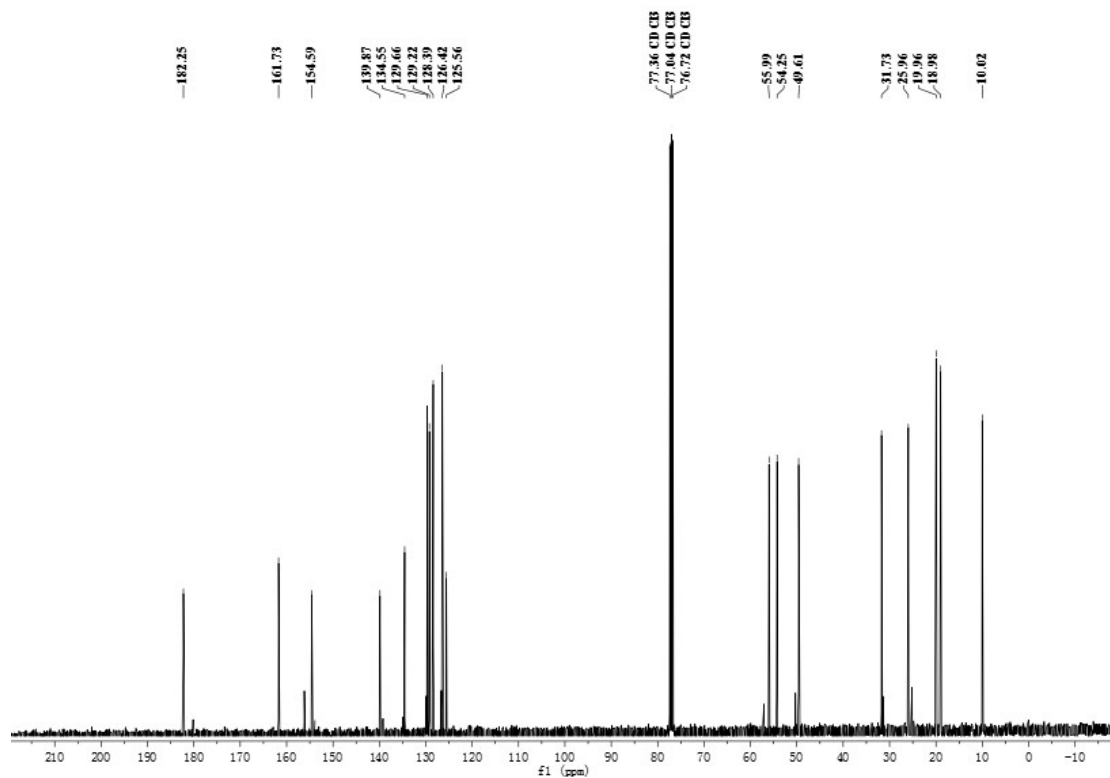
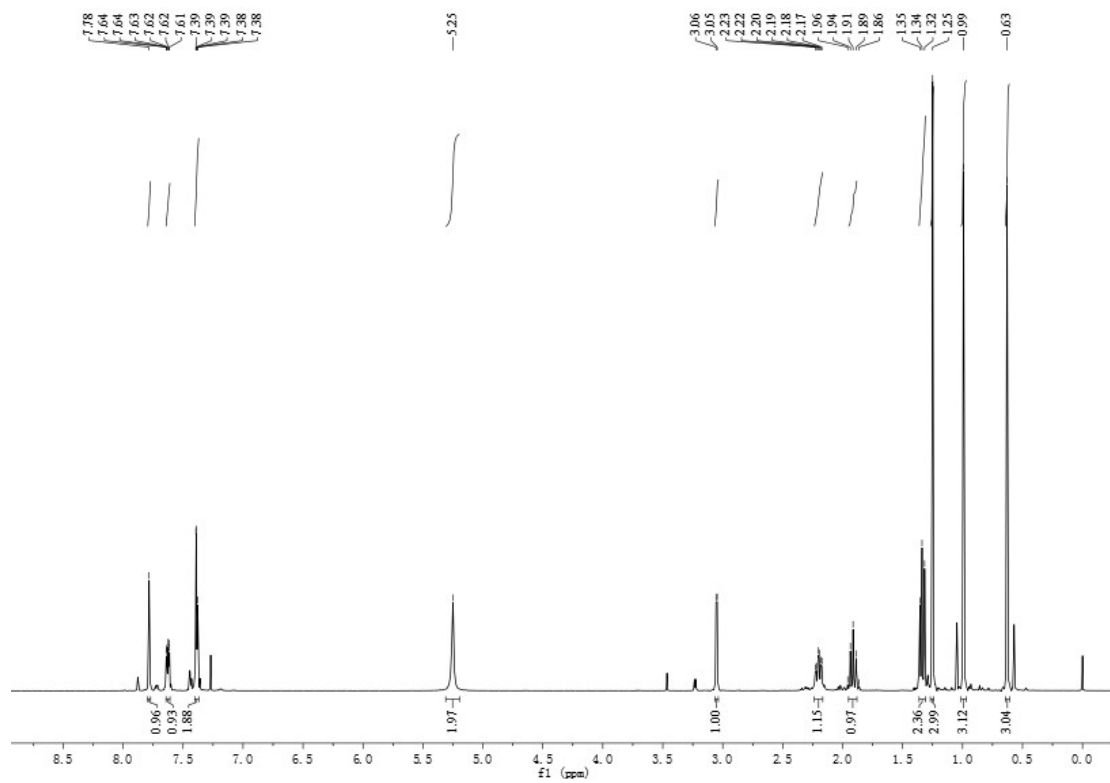
3c



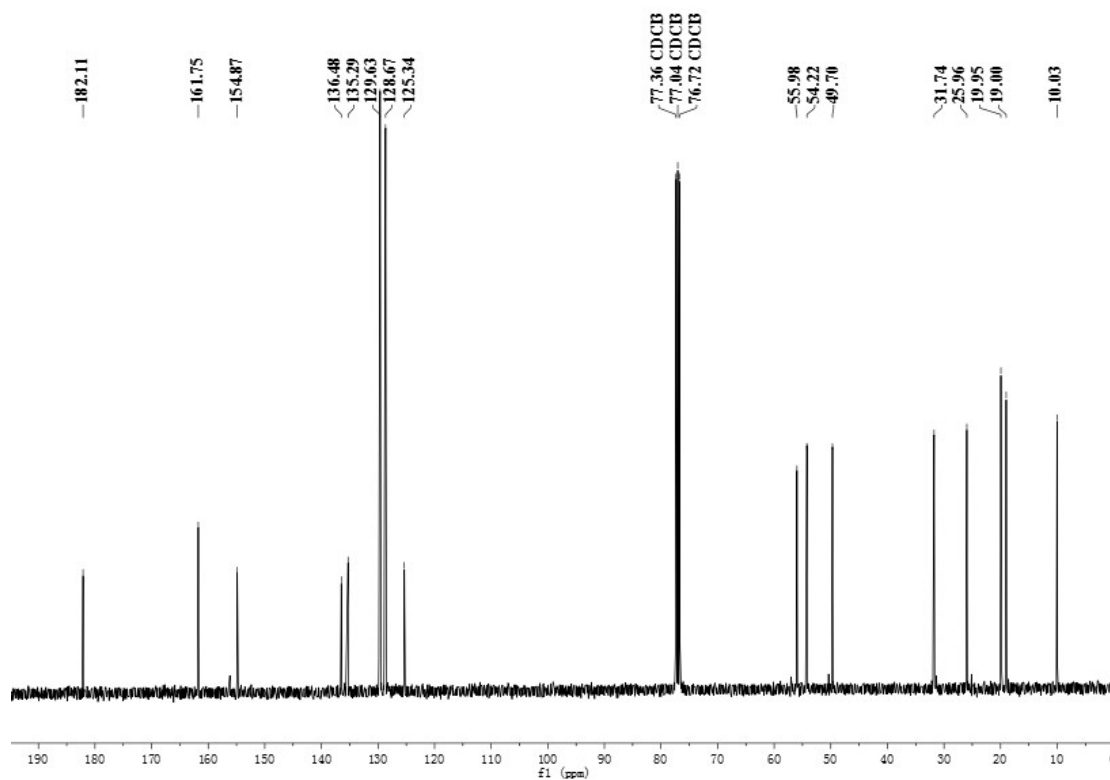
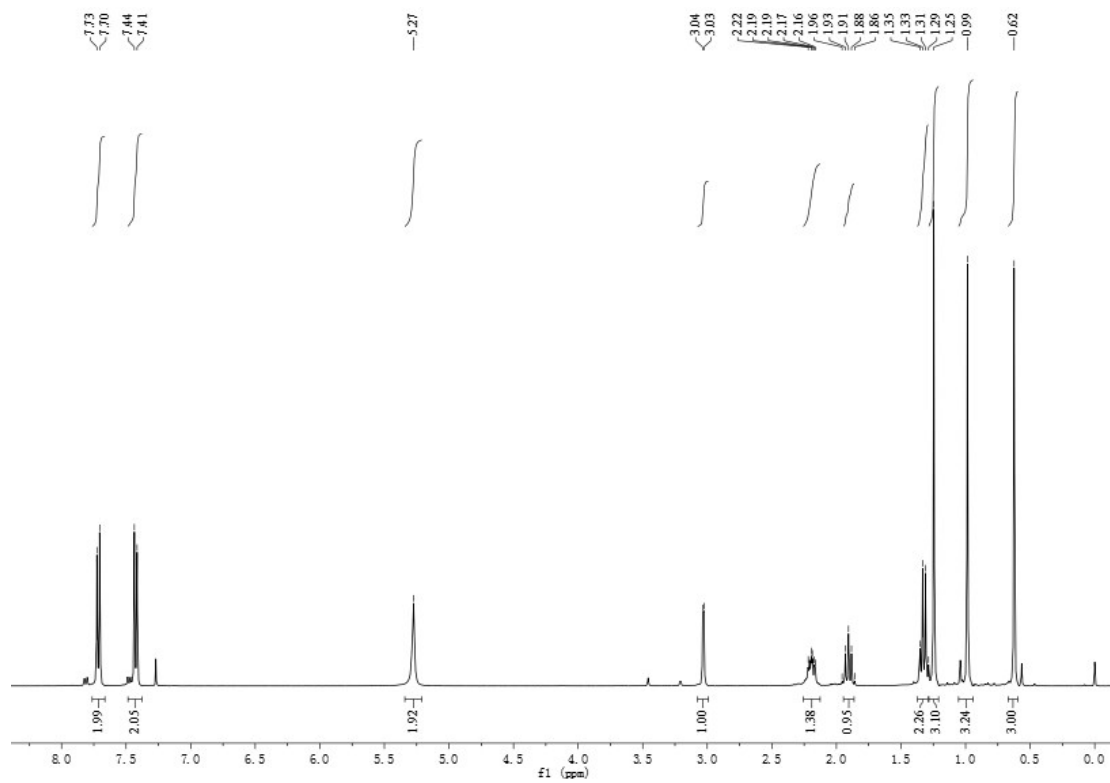
3d



3e

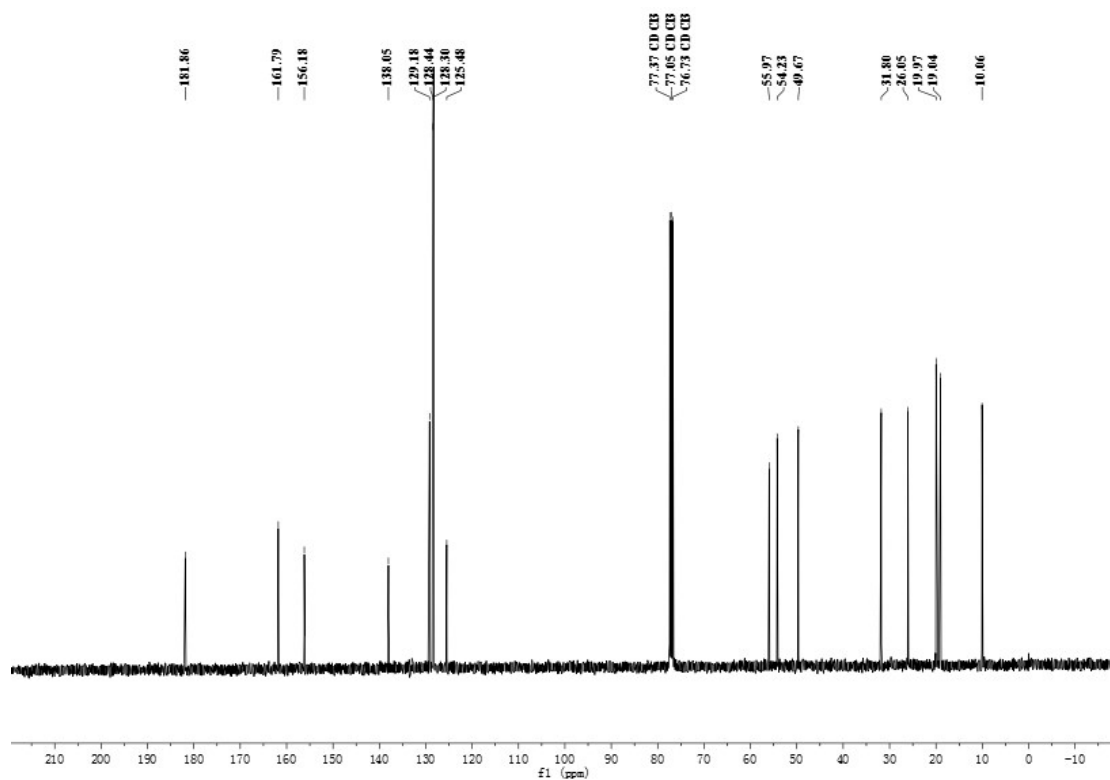
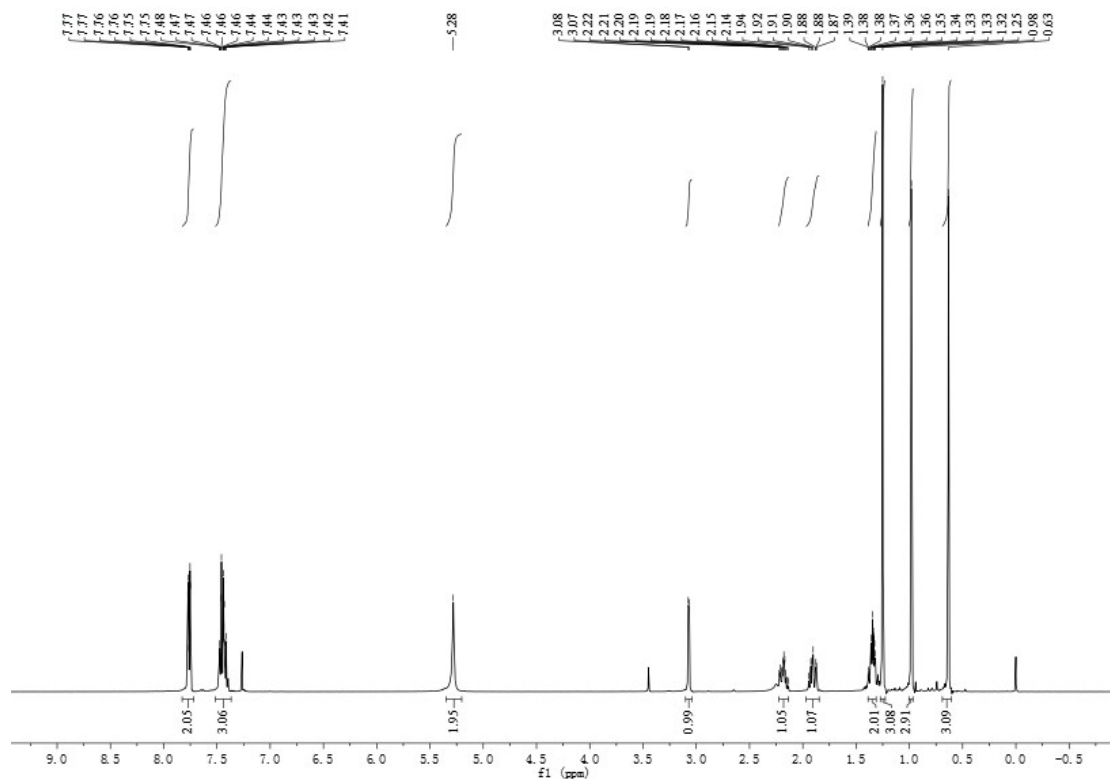


3f

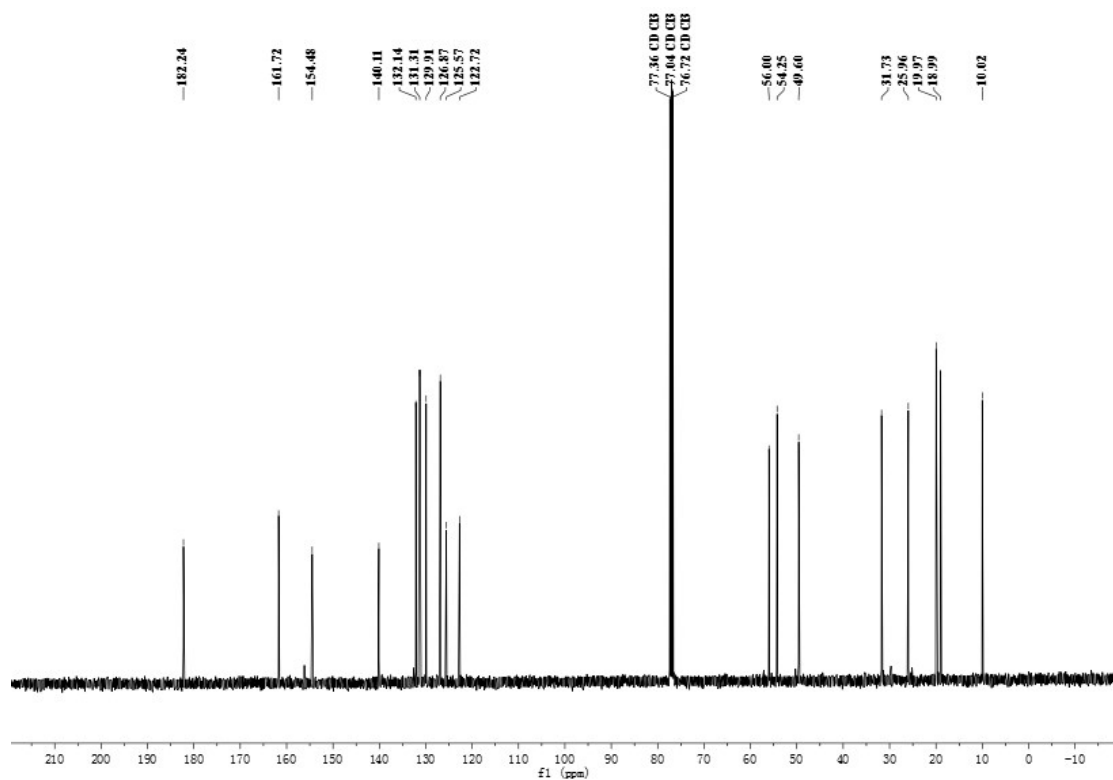
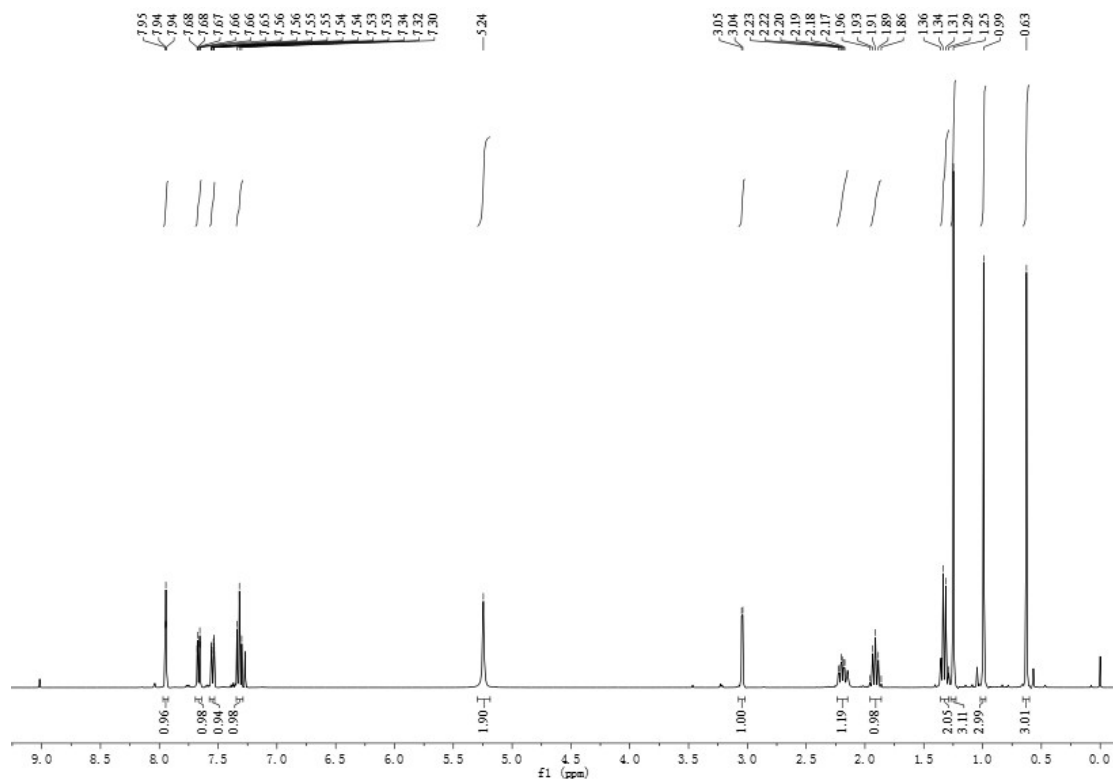




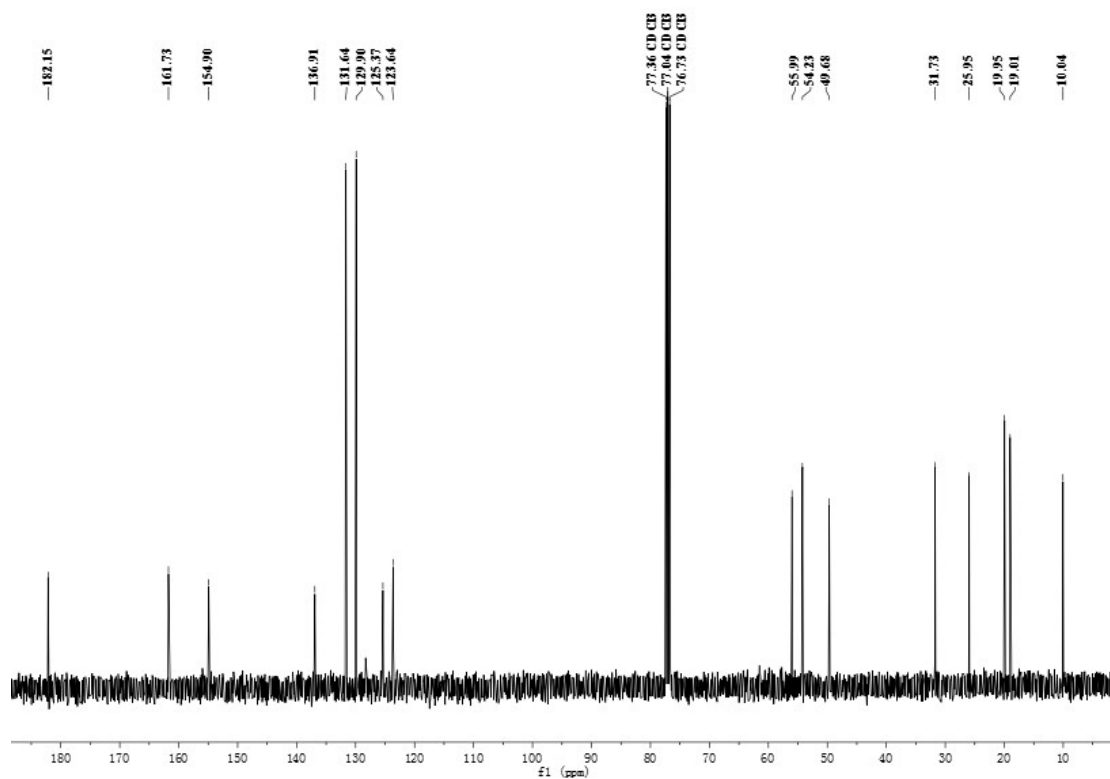
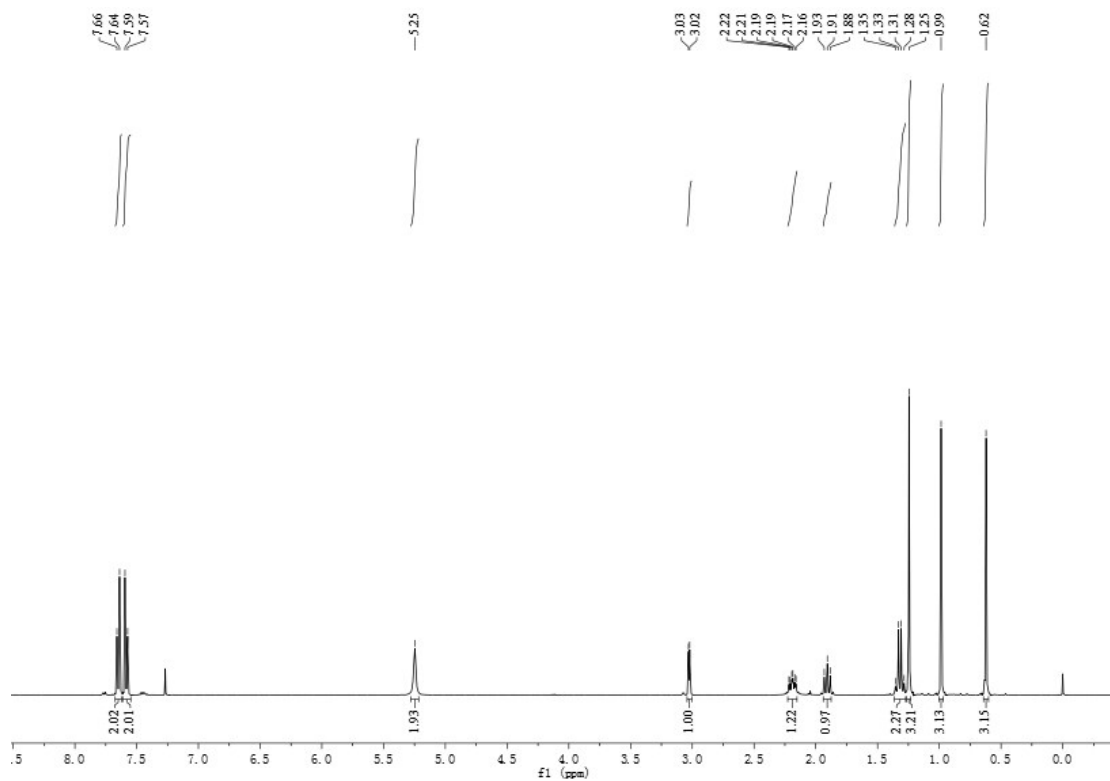
3g



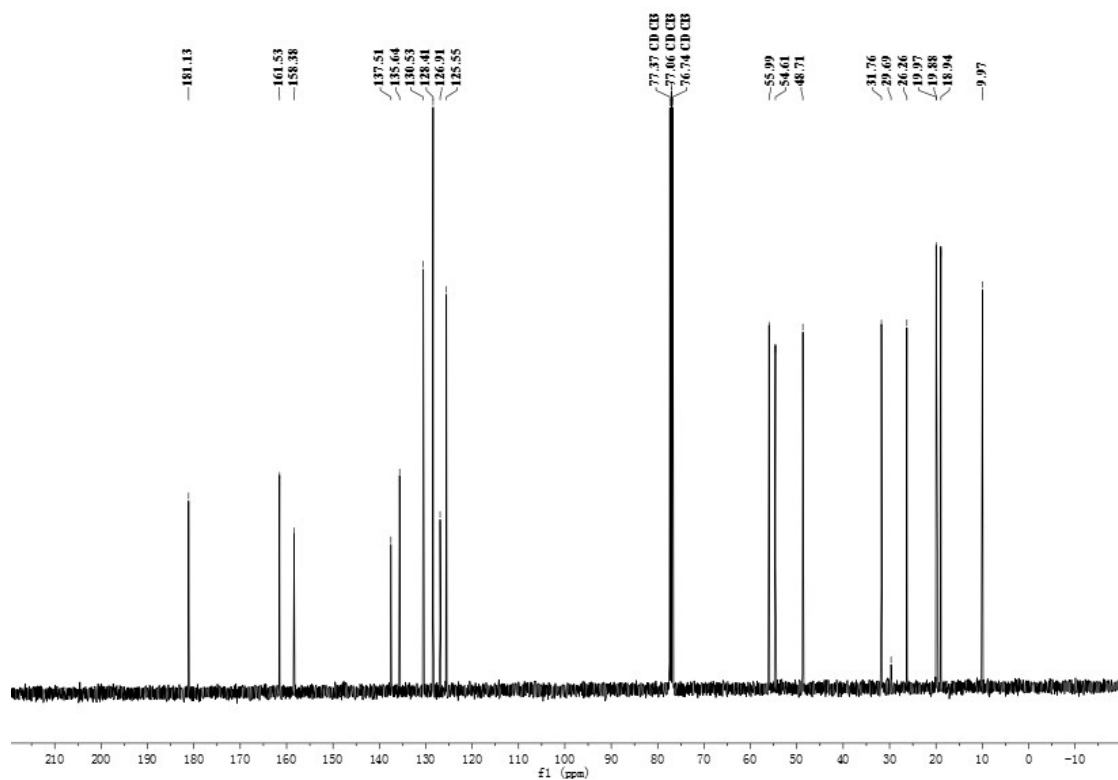
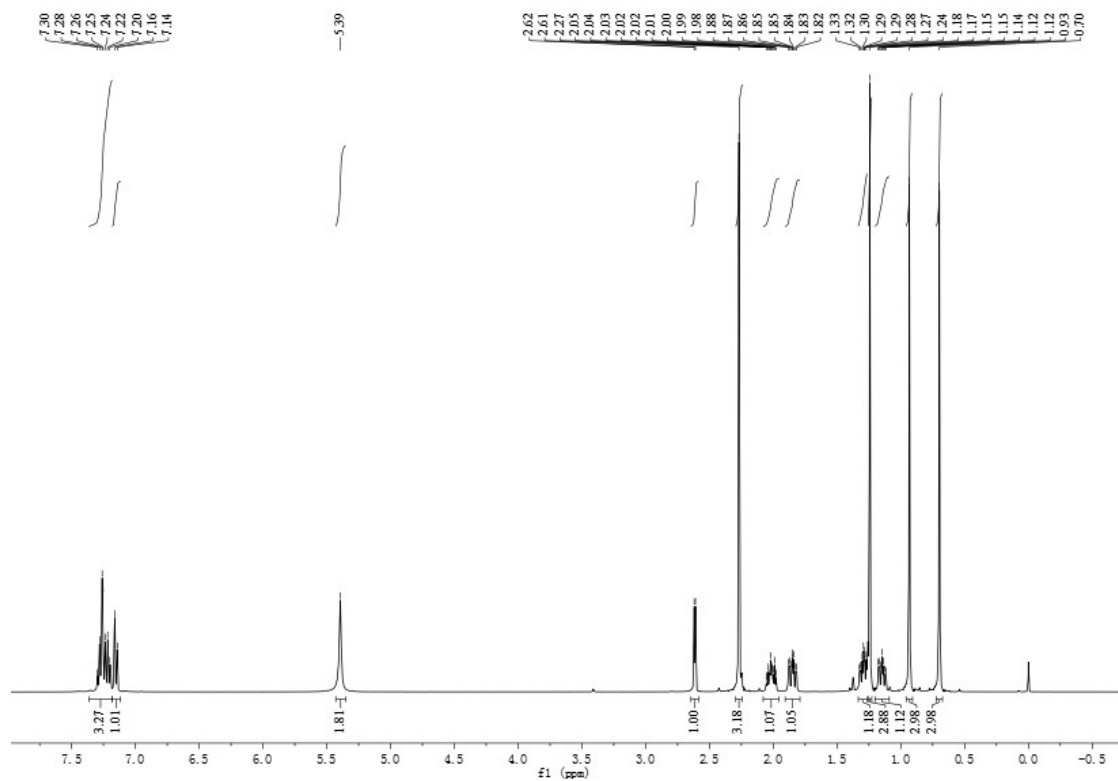
3h



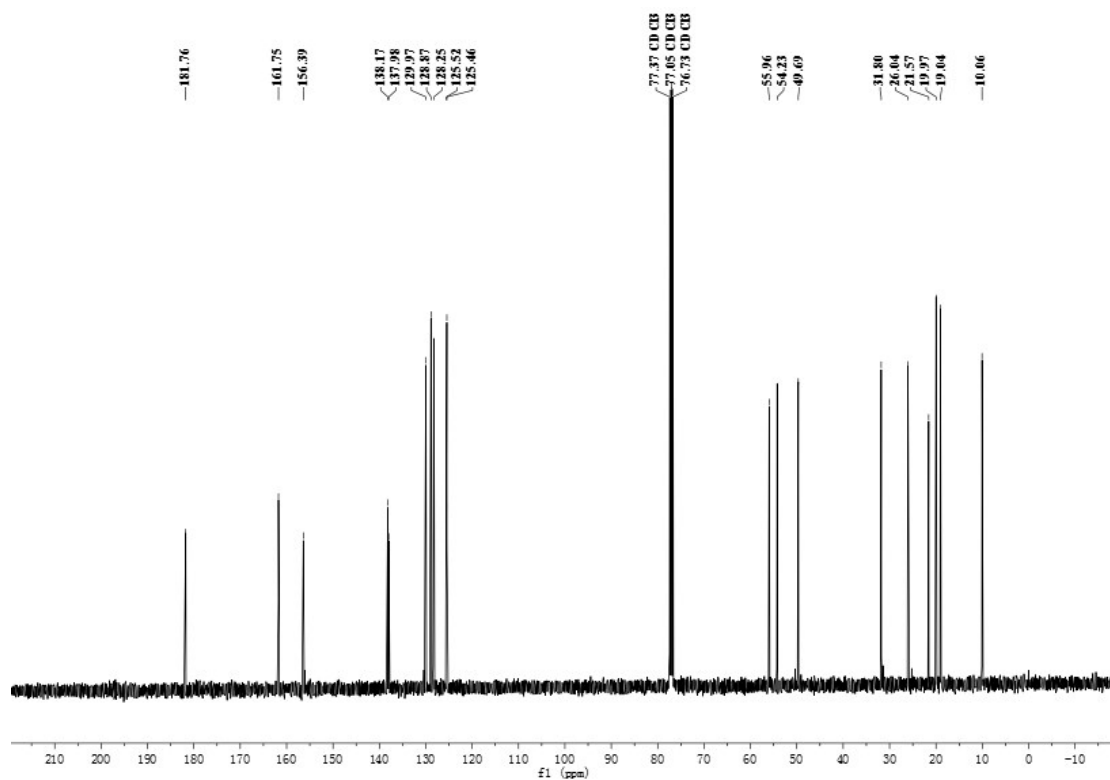
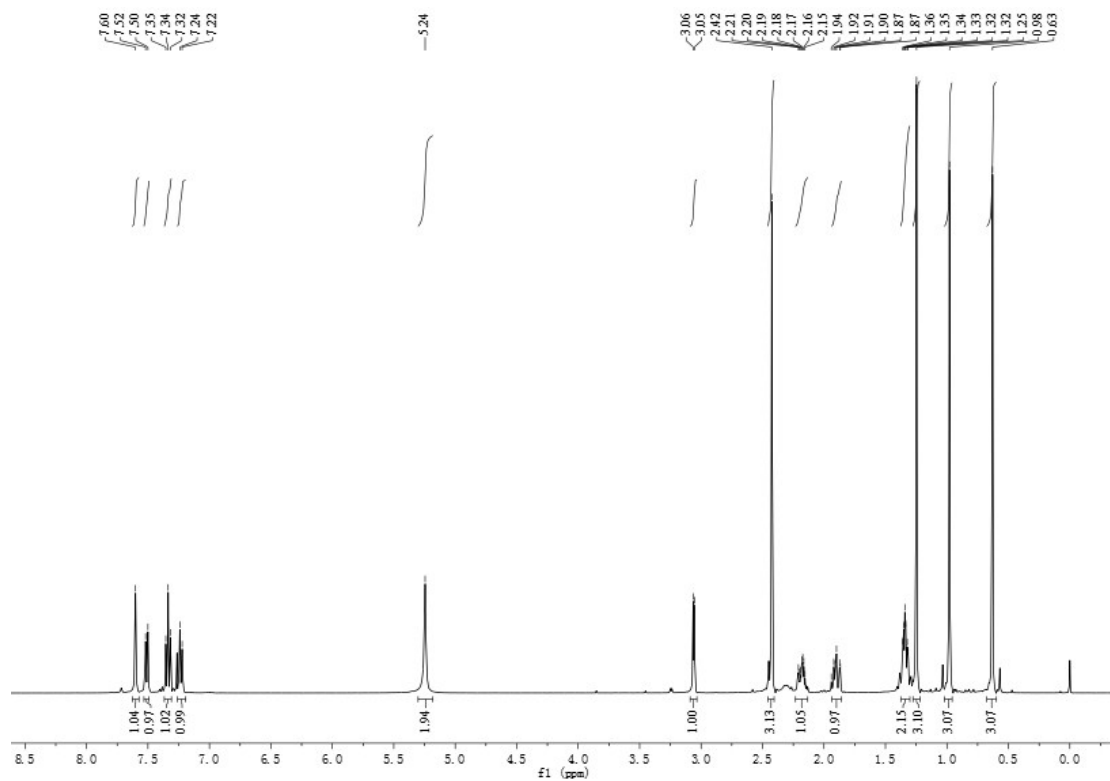
3i



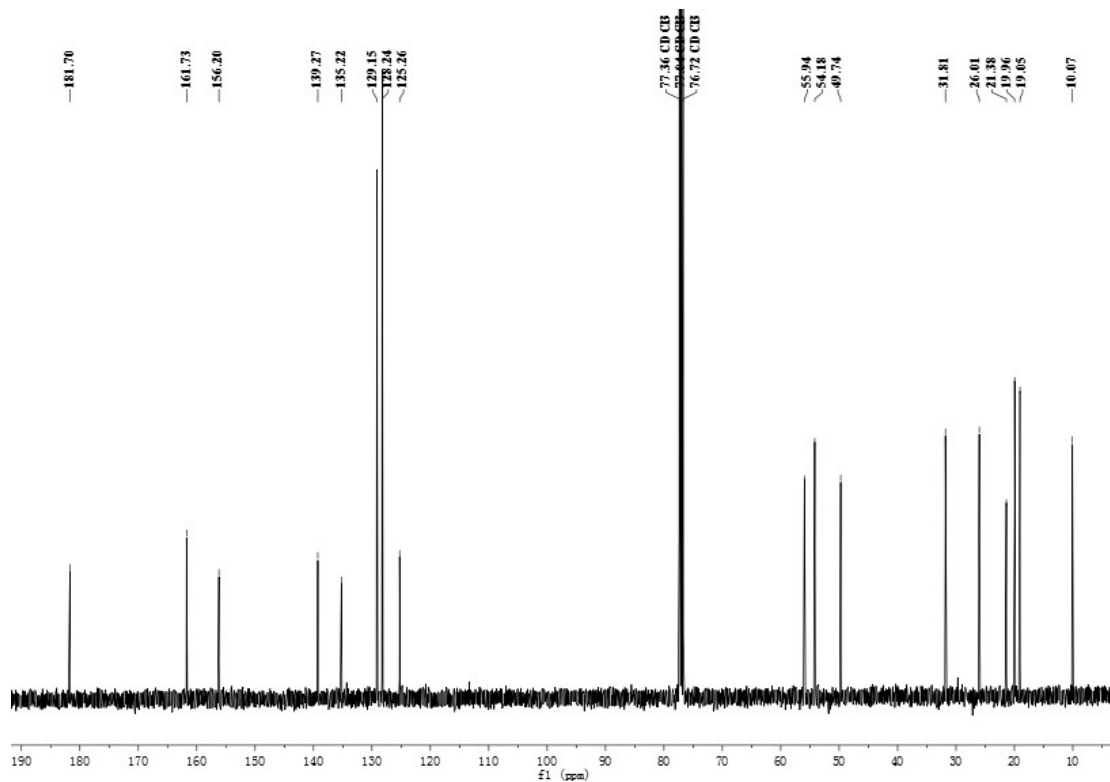
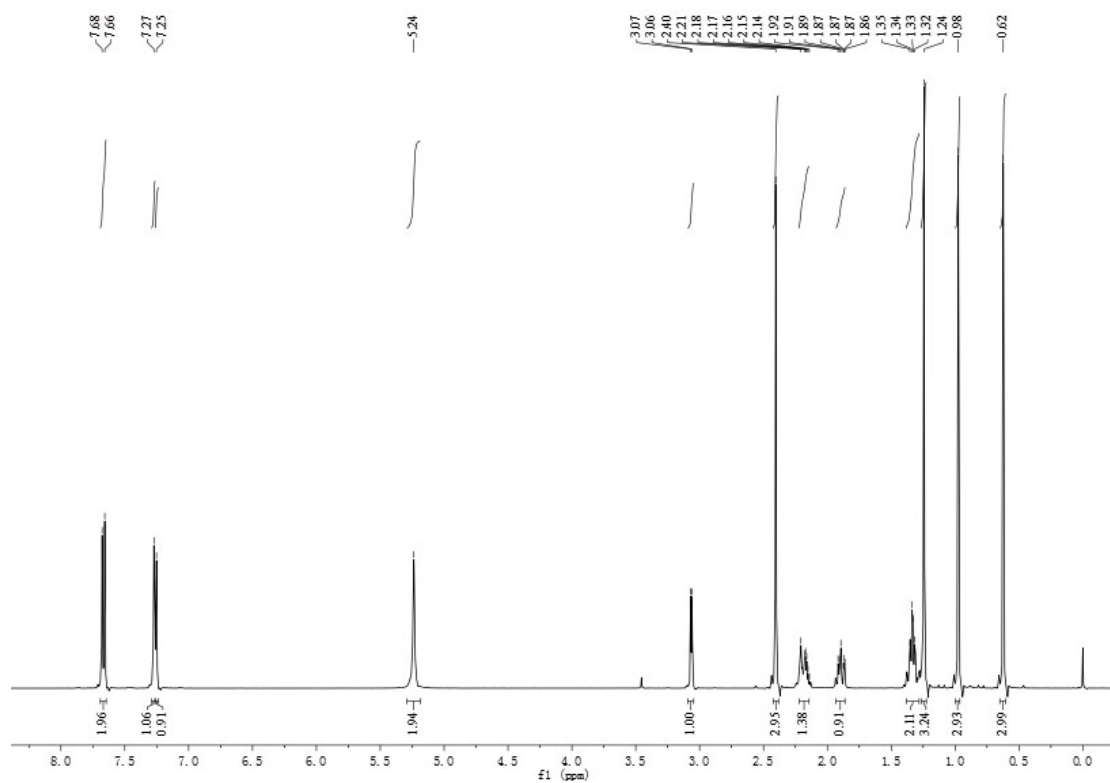
3j



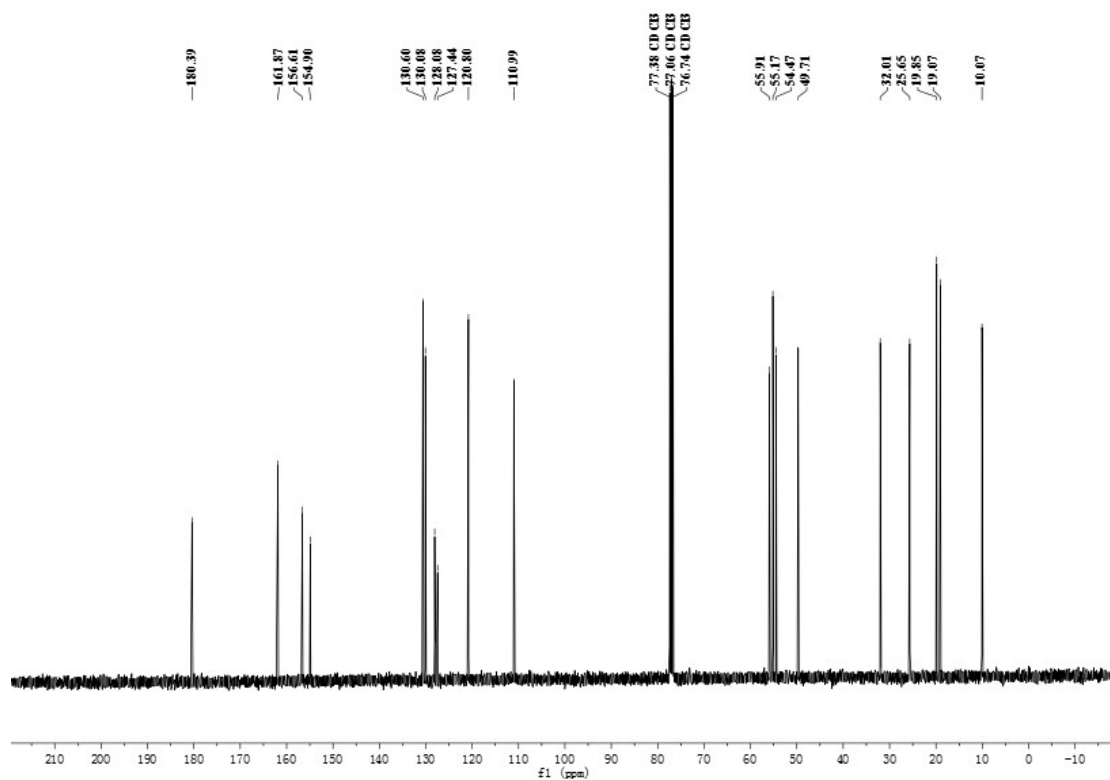
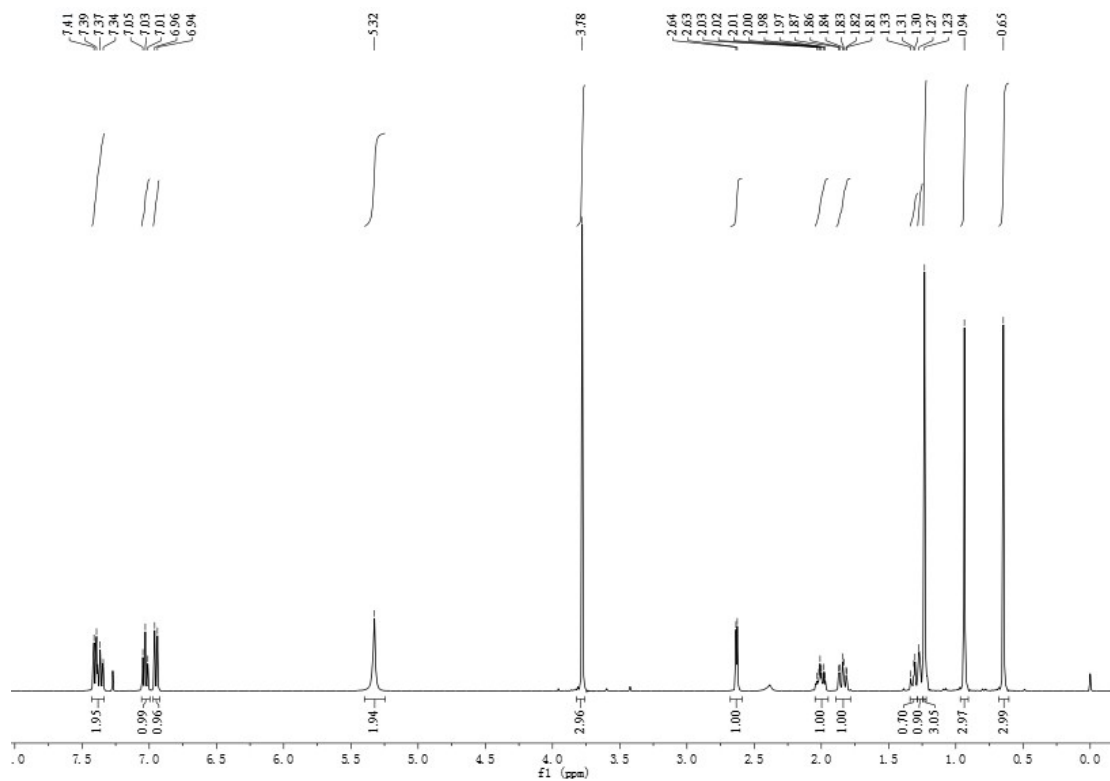
3k



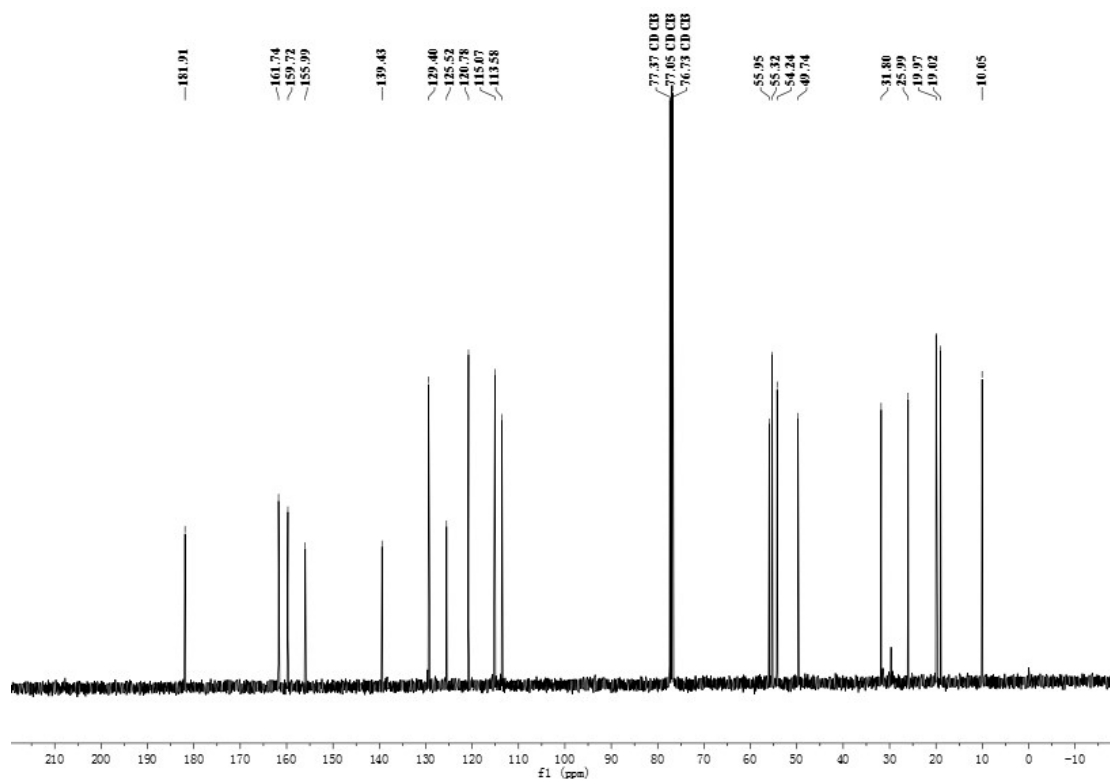
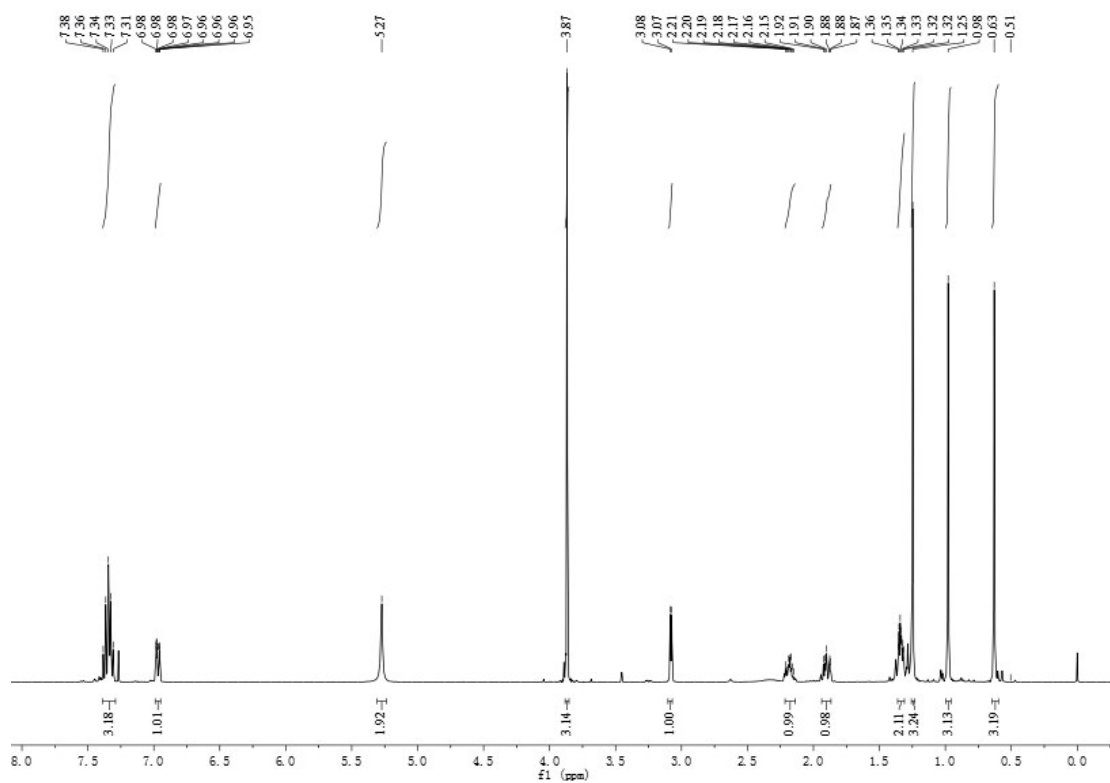
31



3m

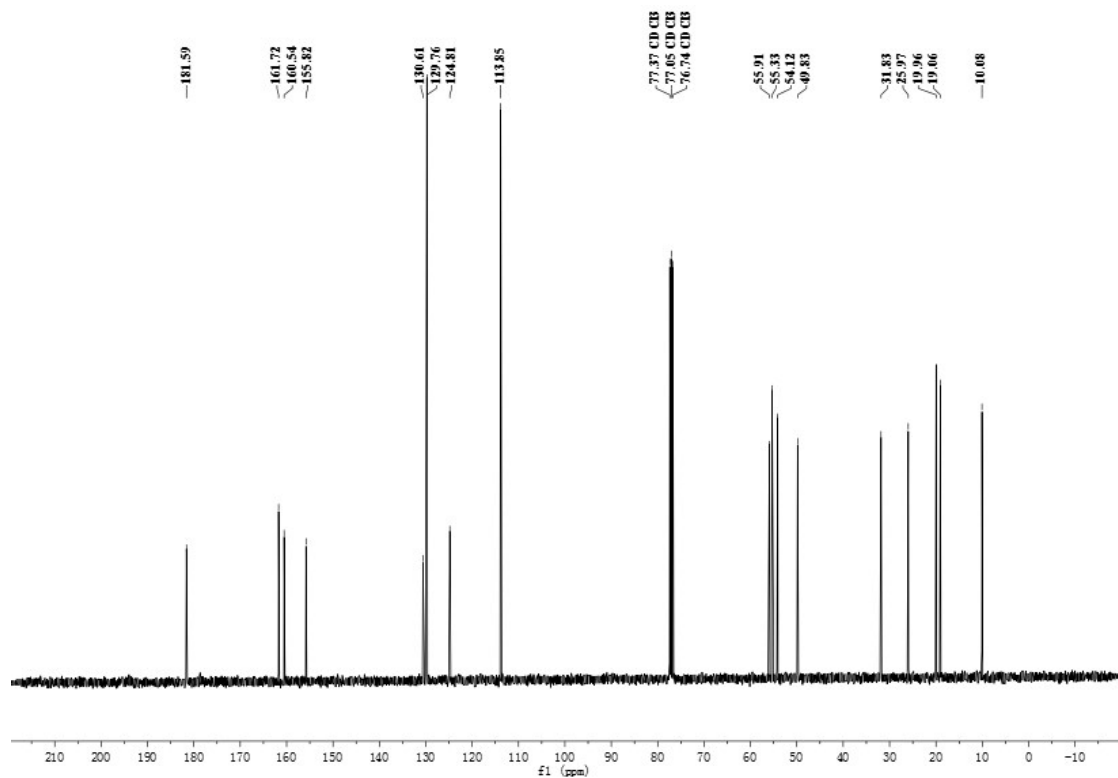
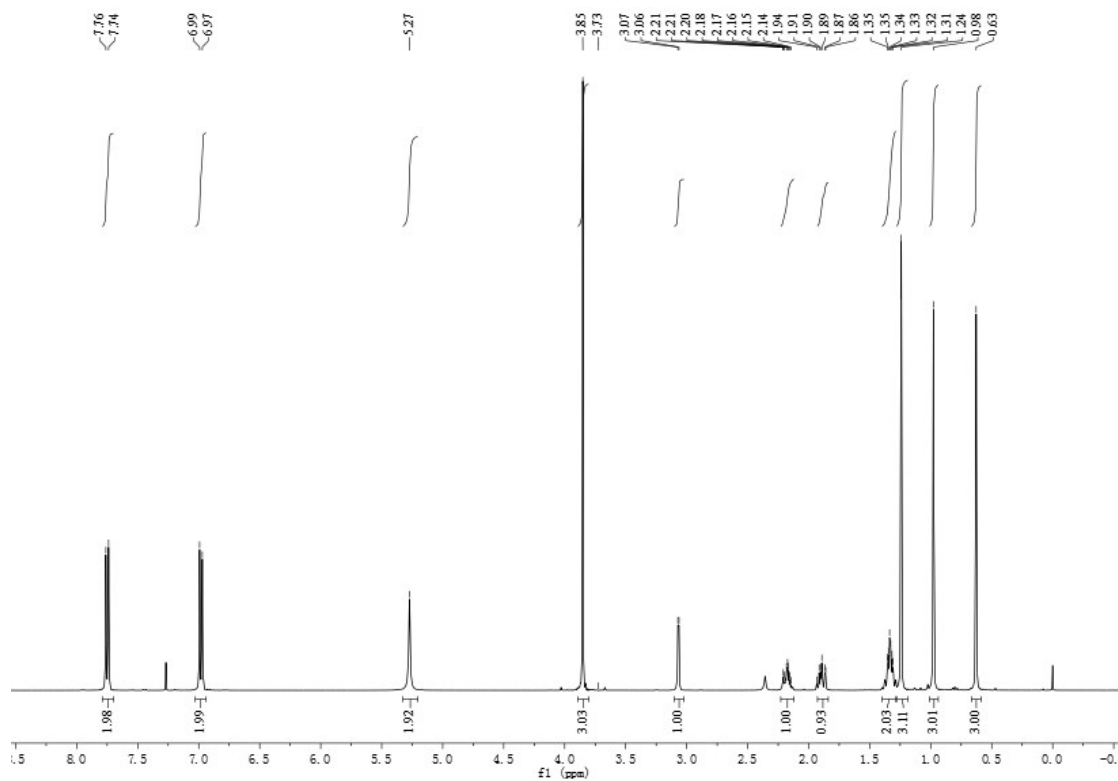


3n

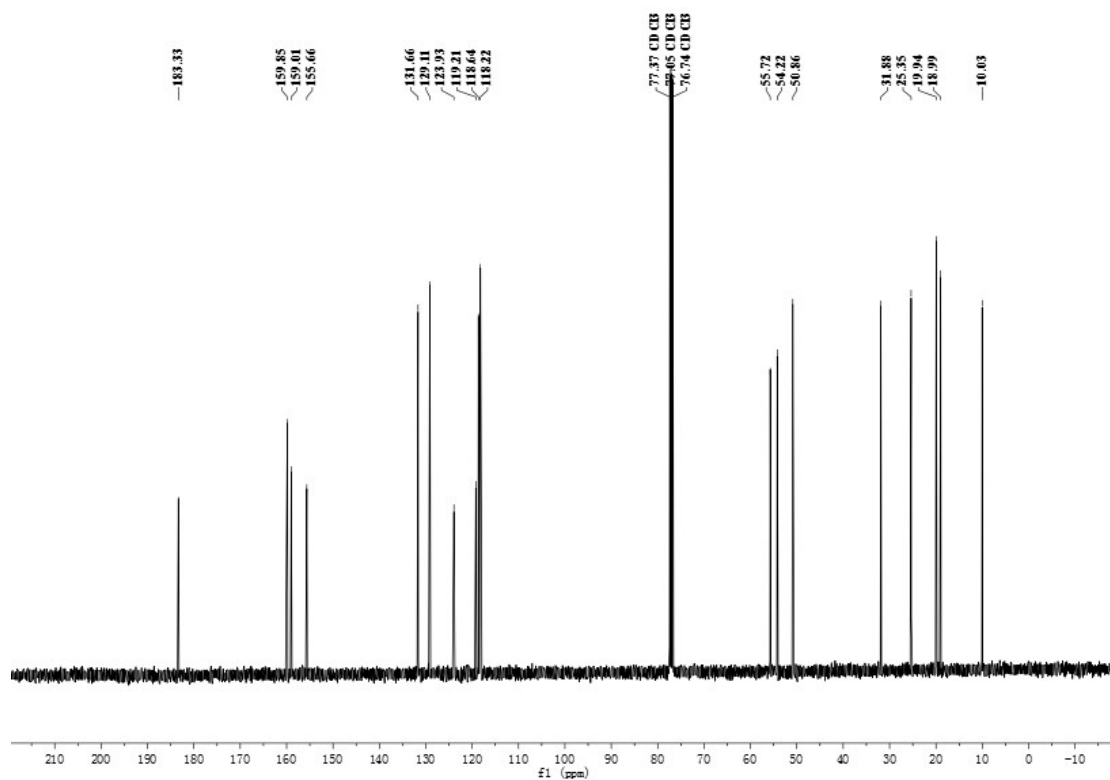
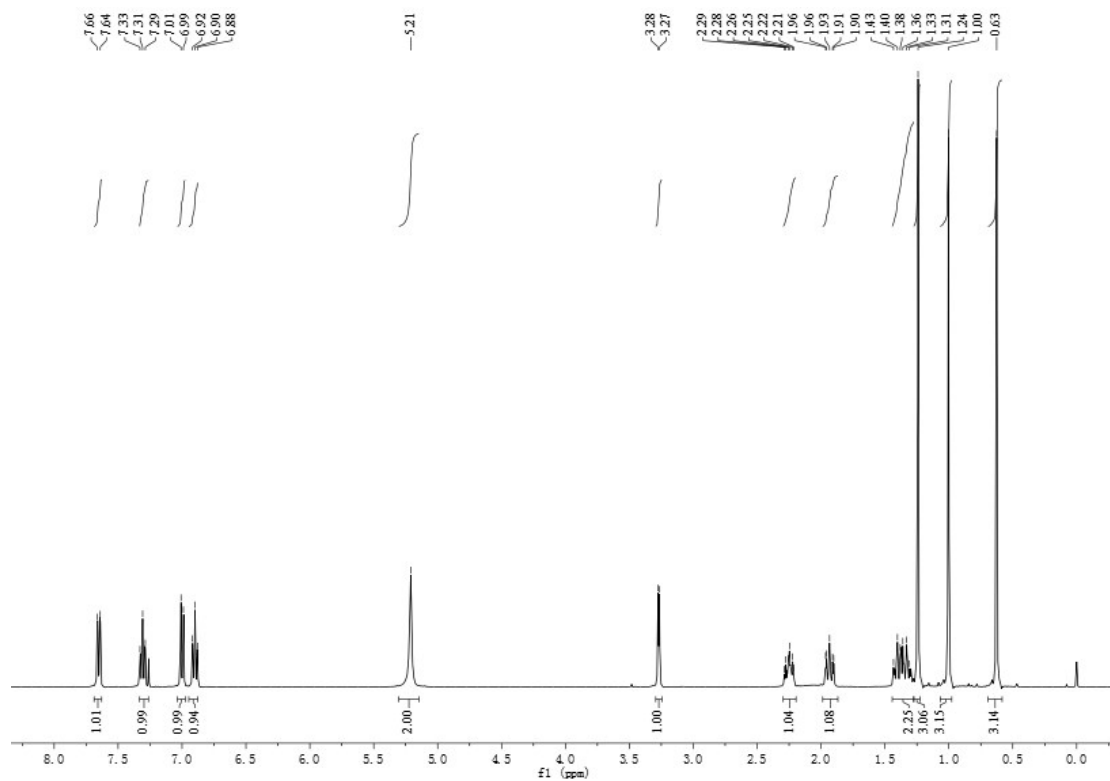




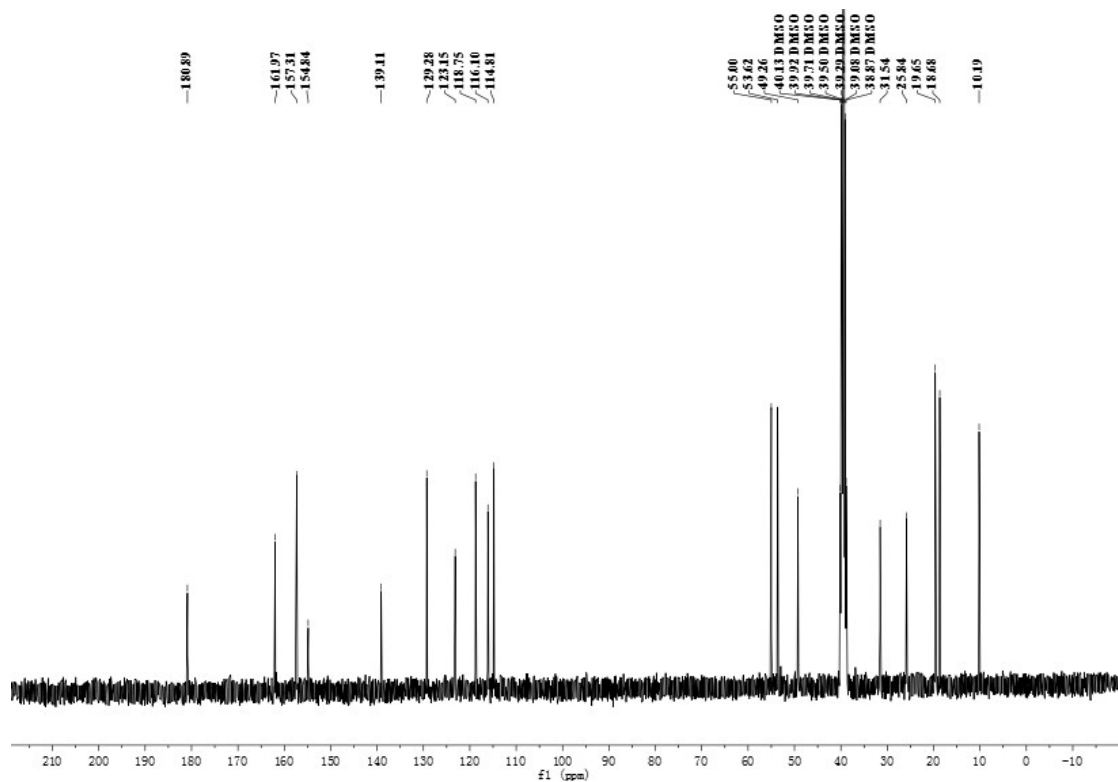
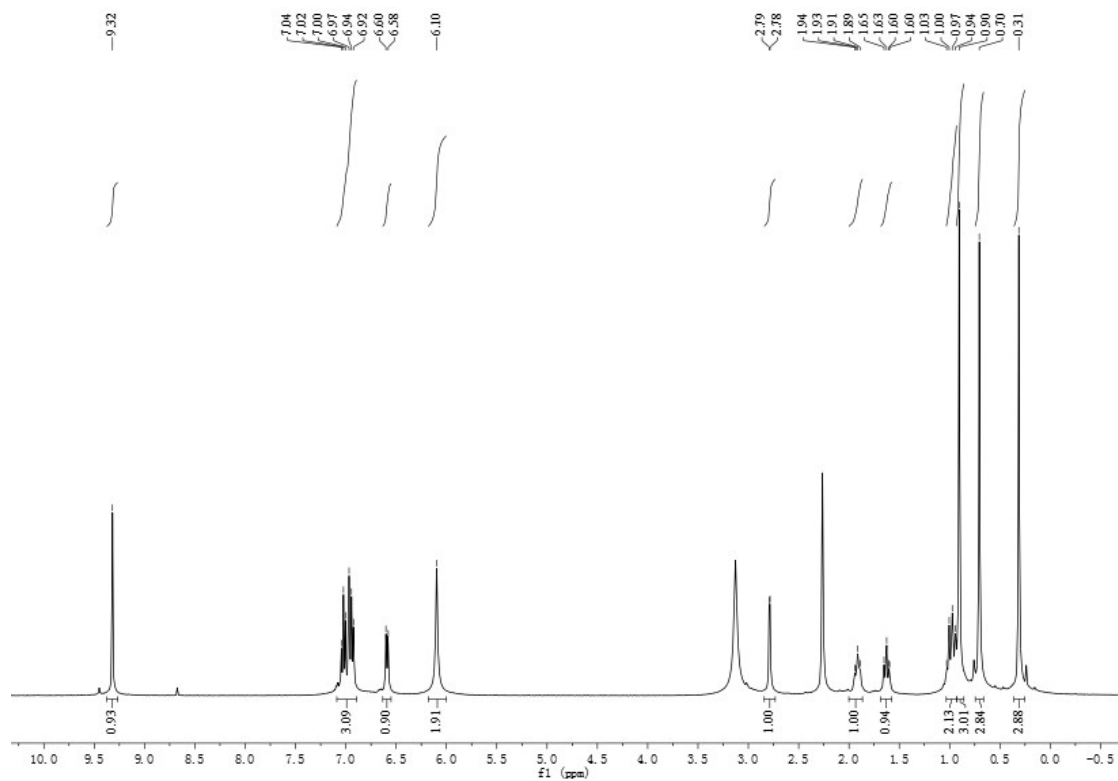
30



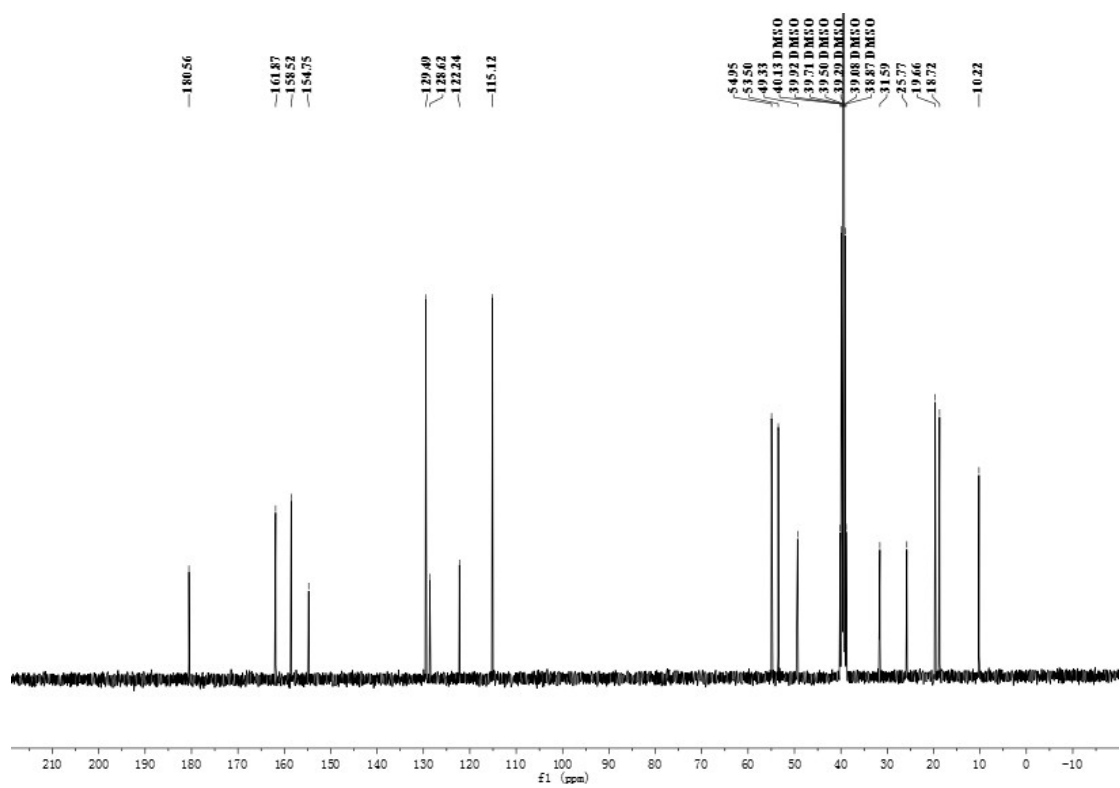
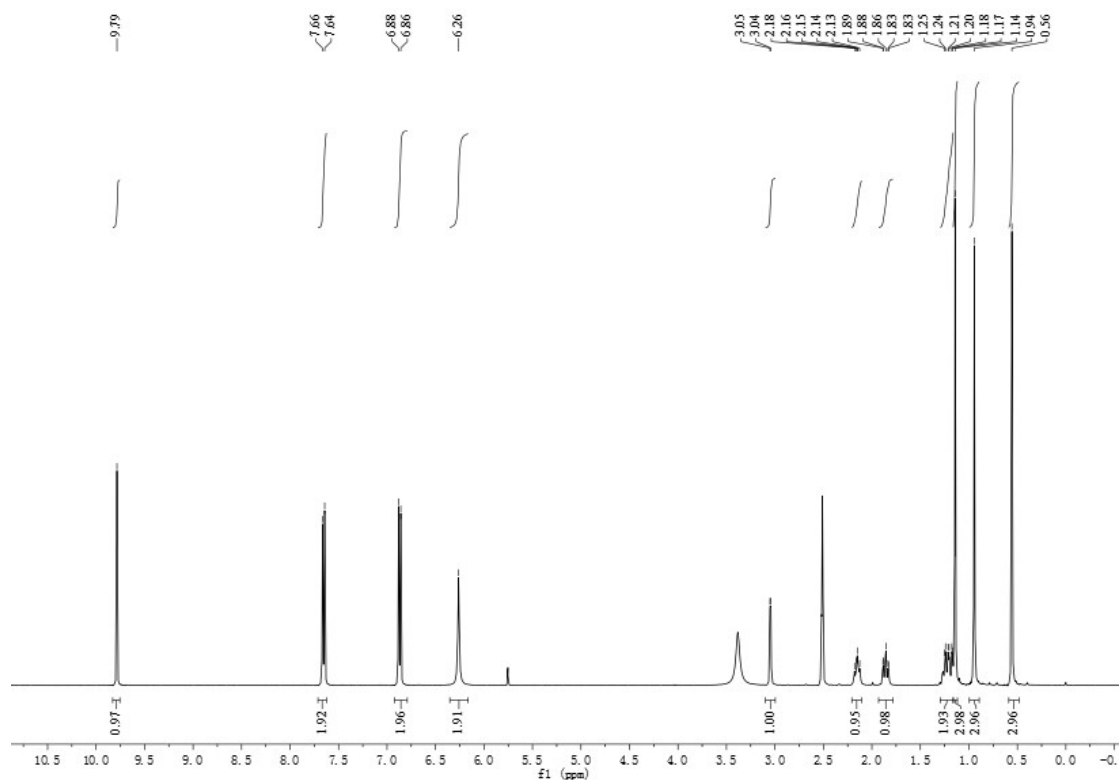
3p



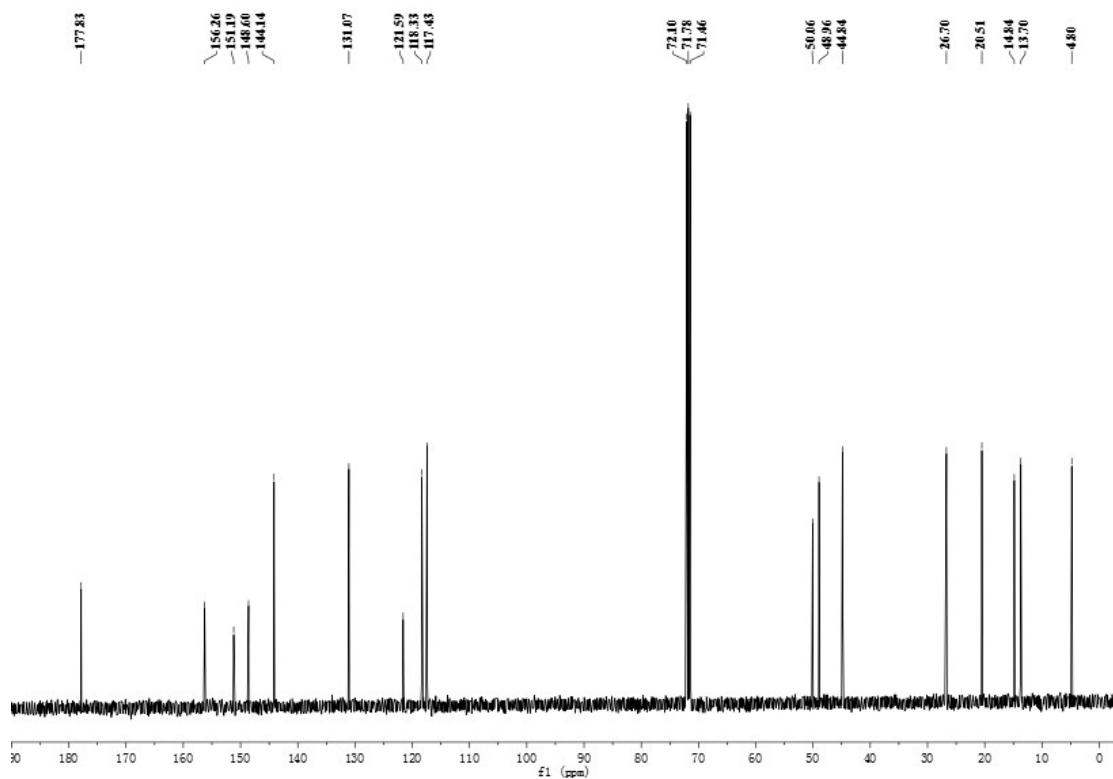
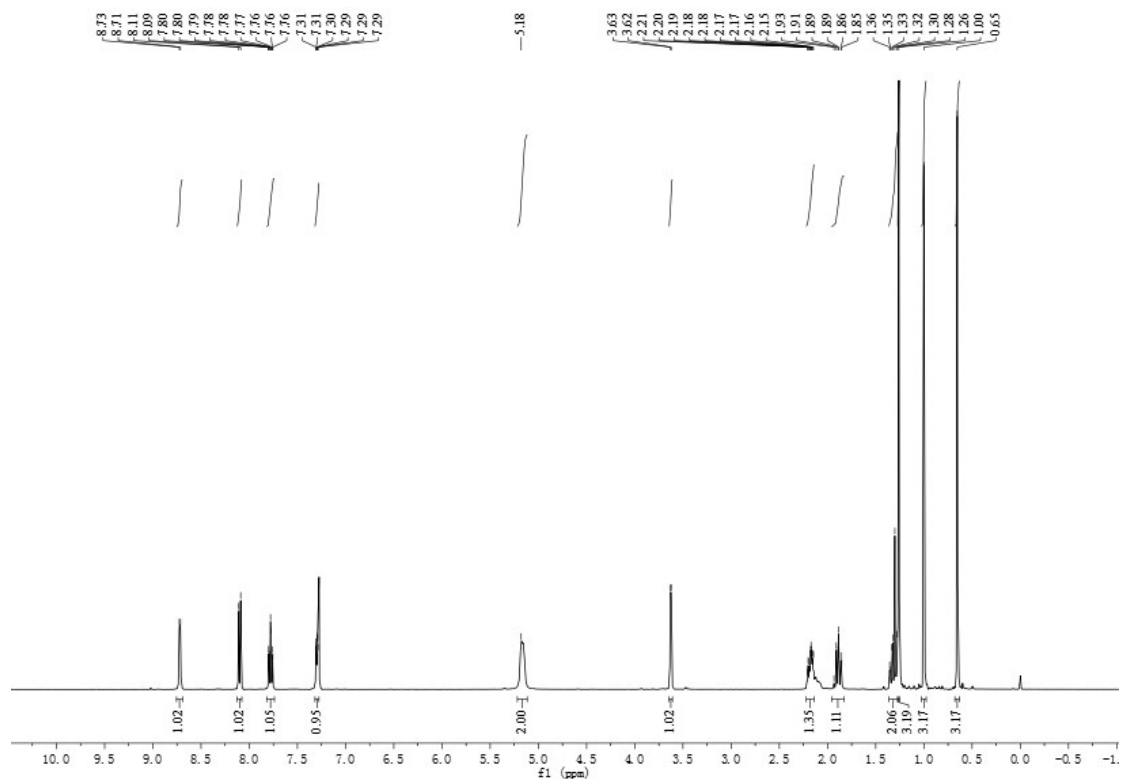
3q



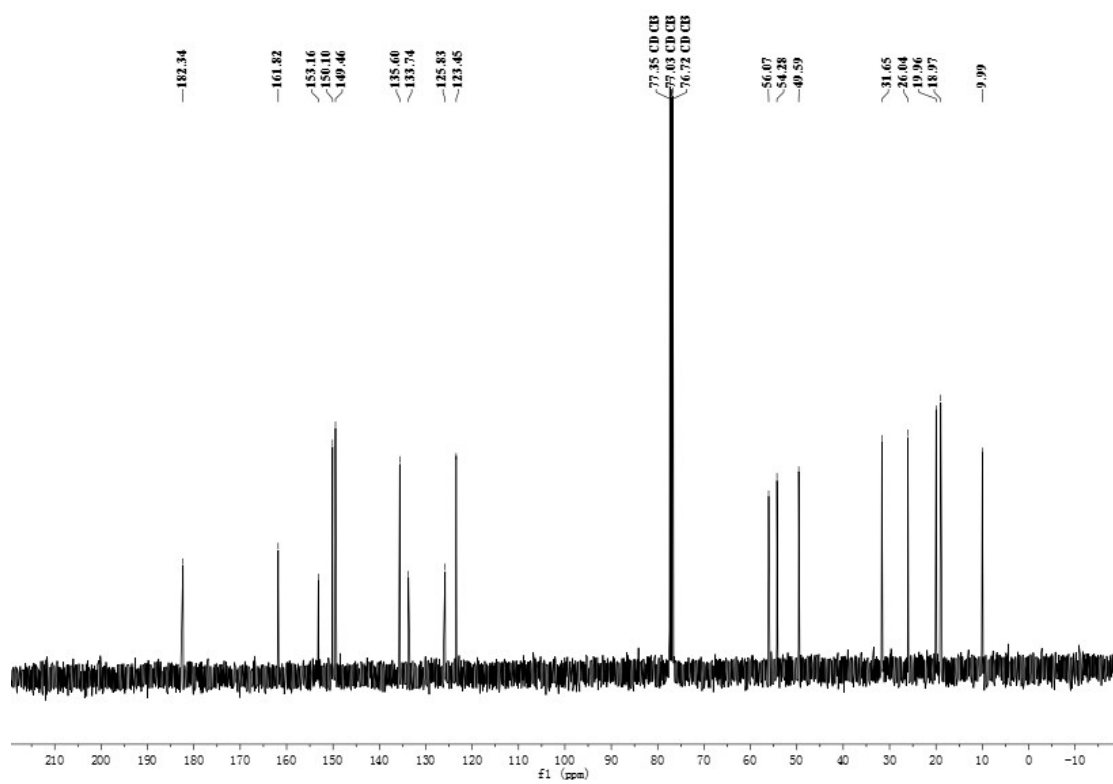
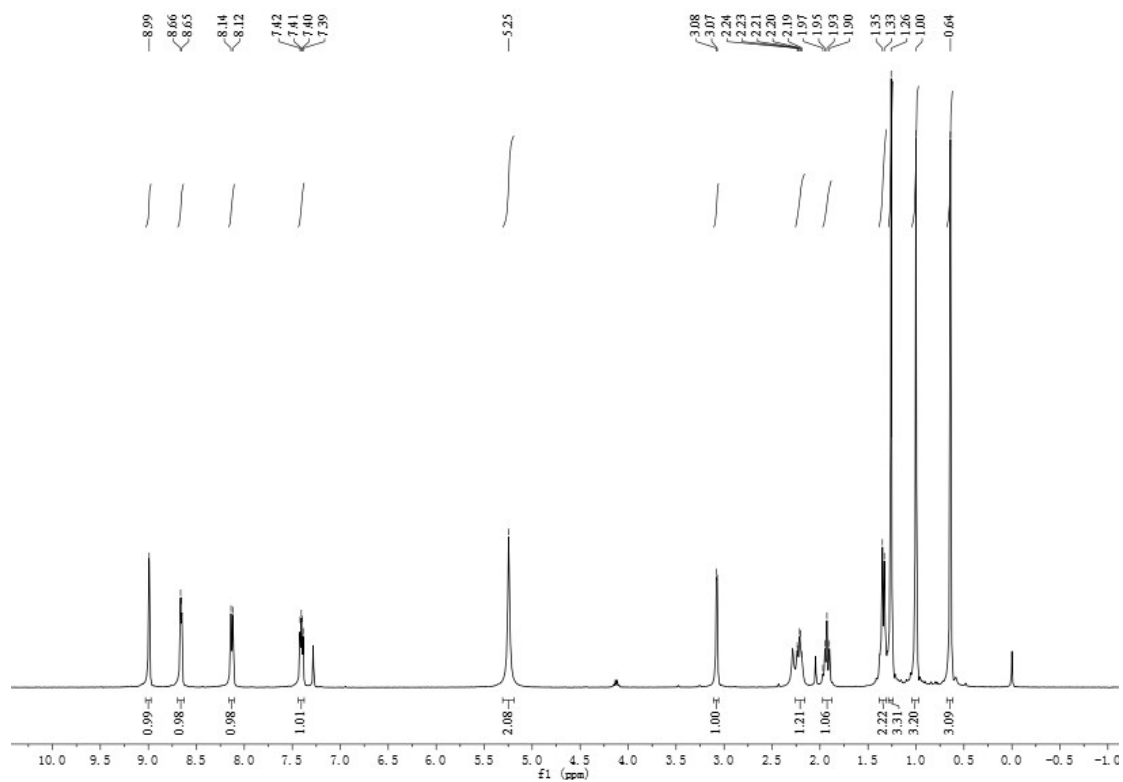
3r



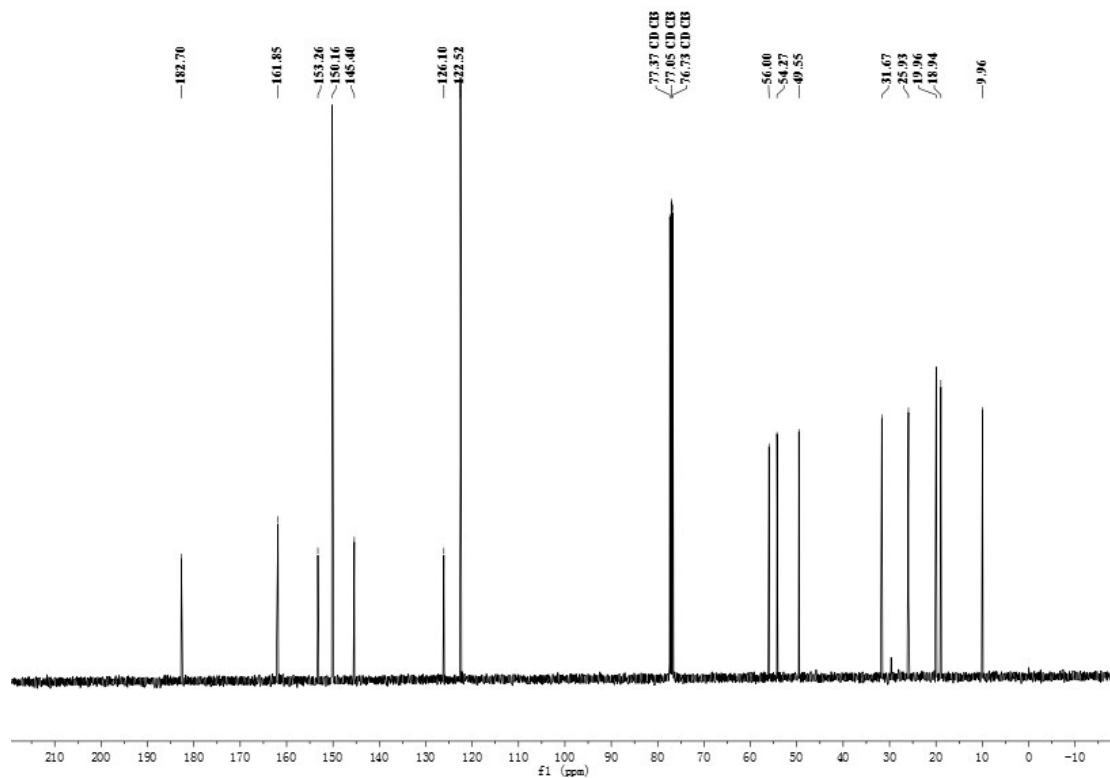
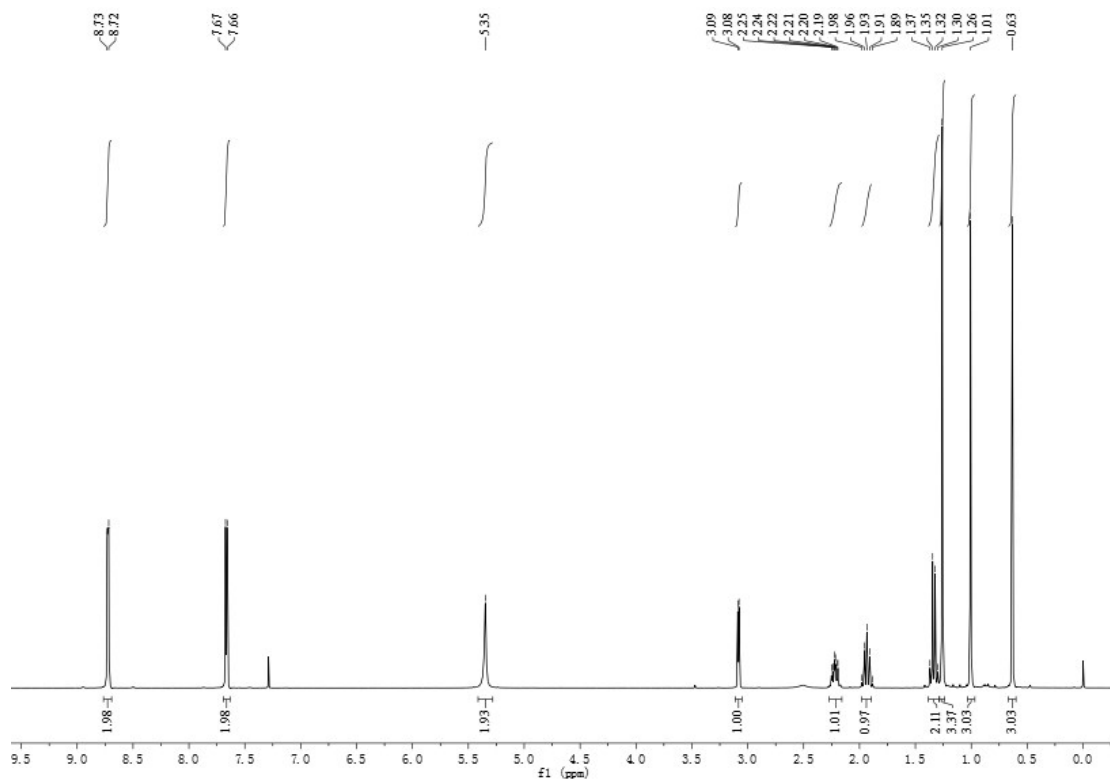
3s



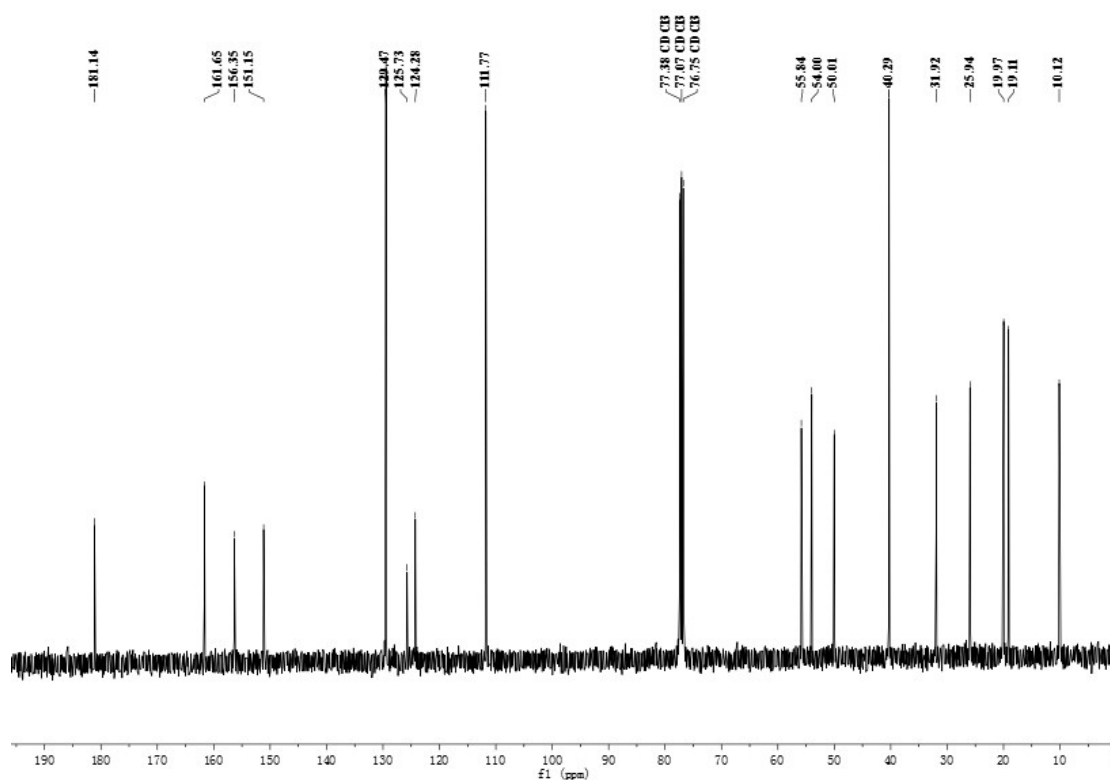
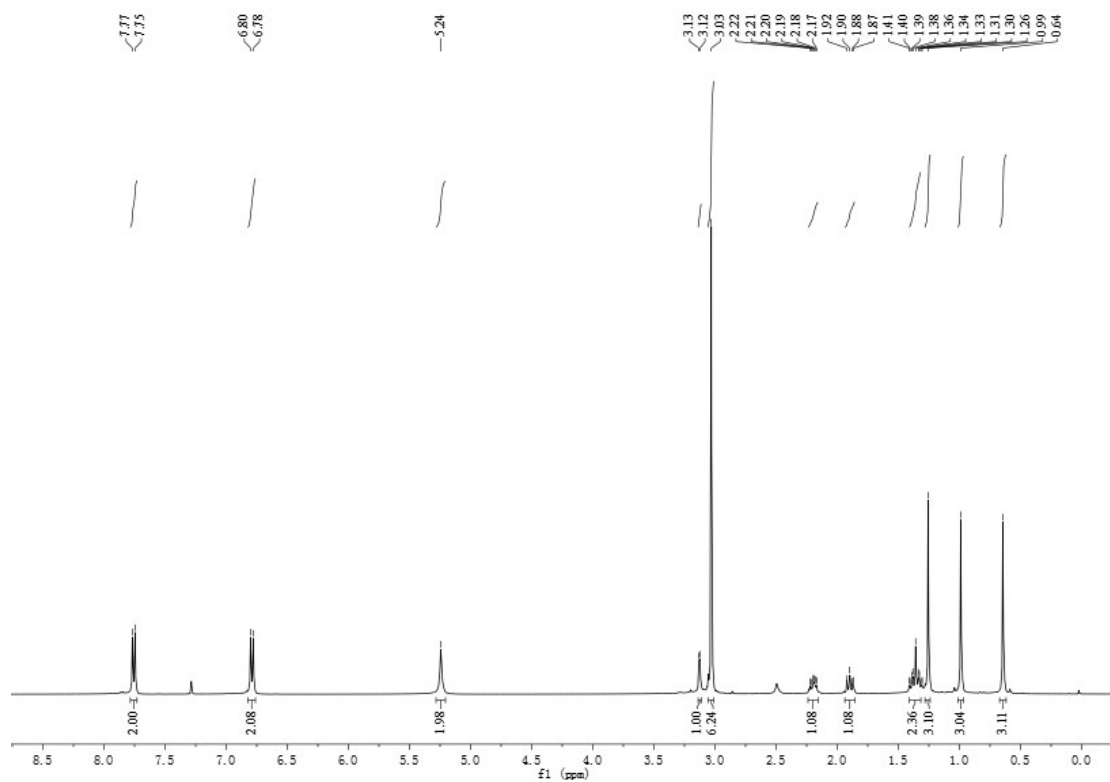
3t



3u

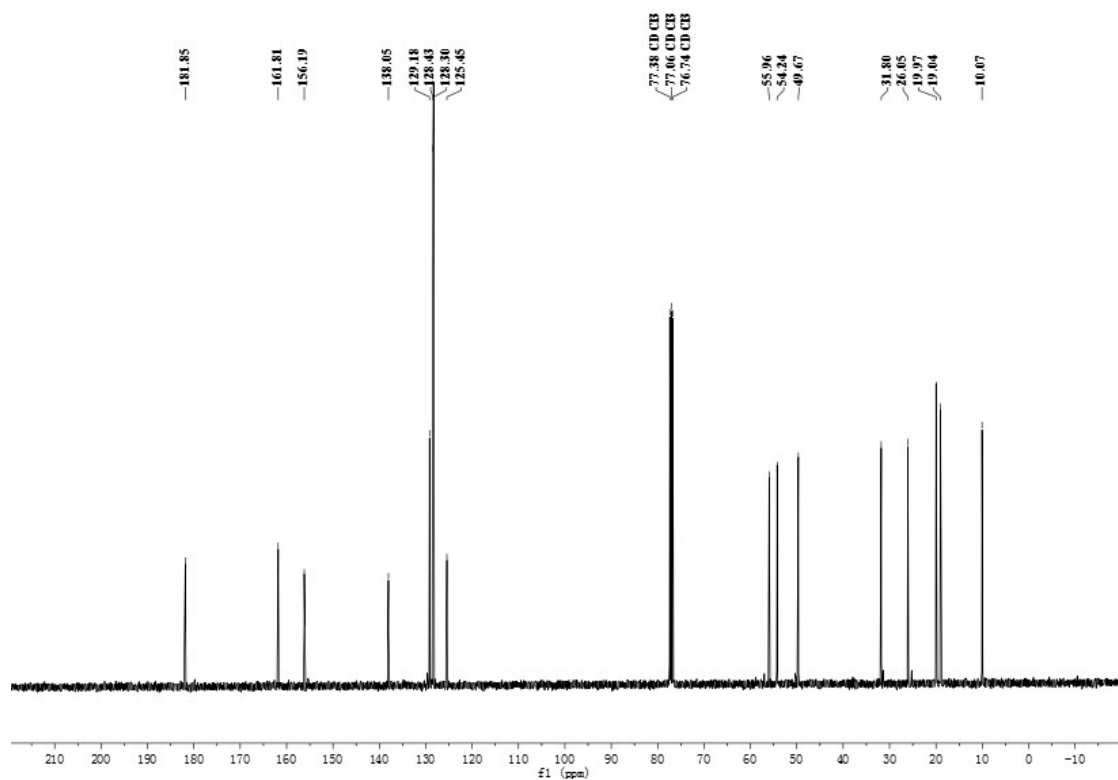
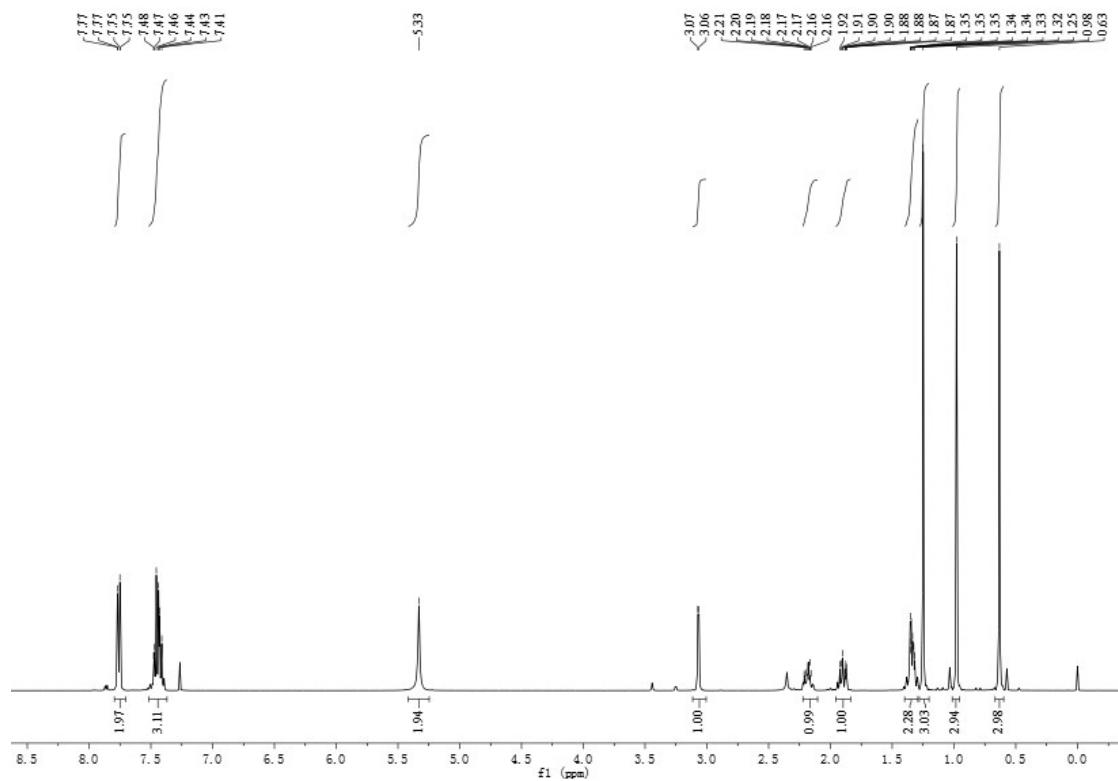


3v

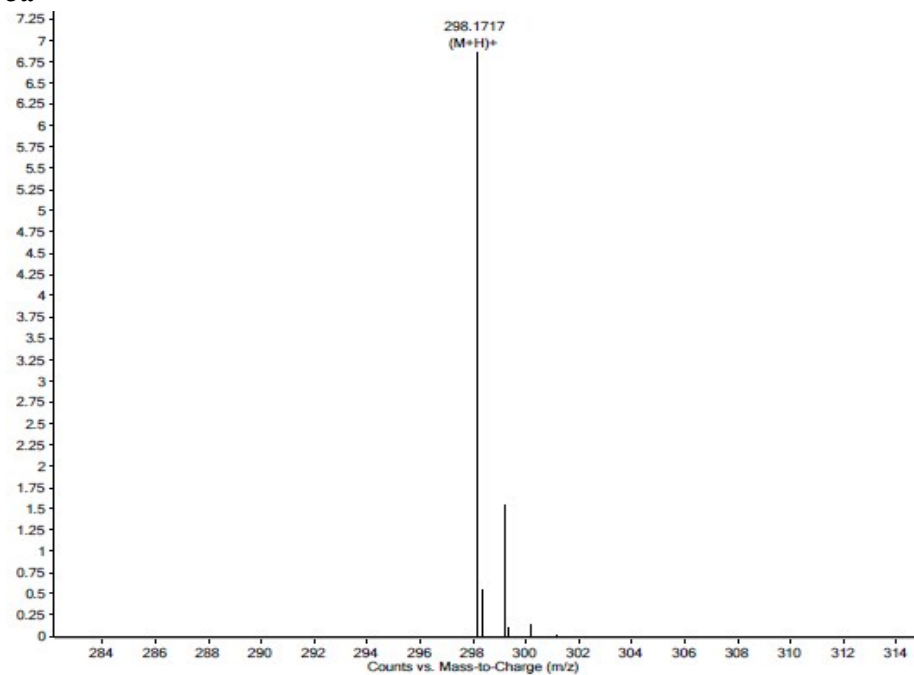




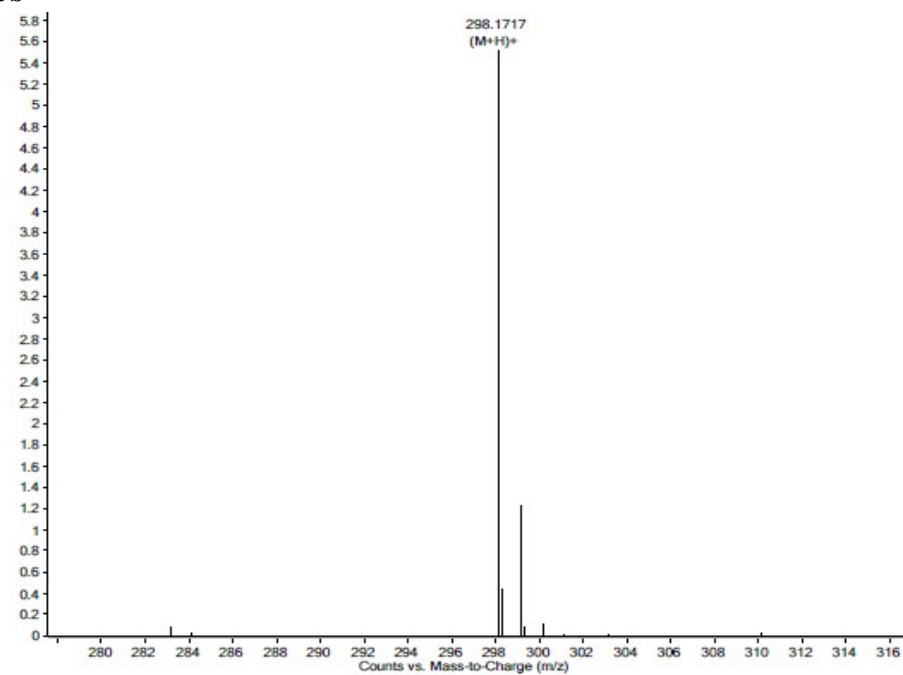
3x



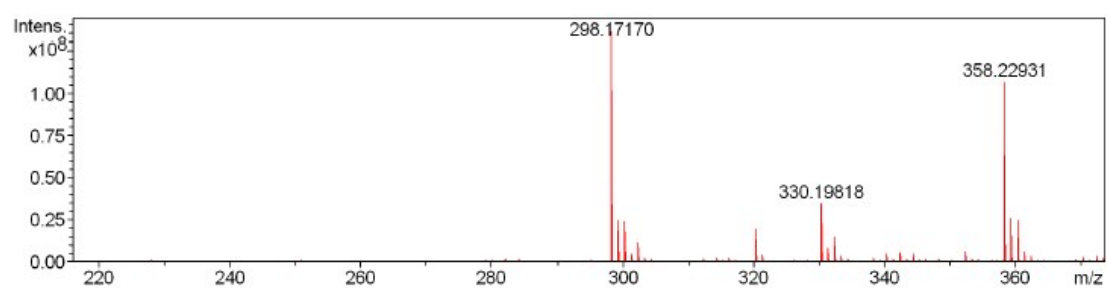
3a



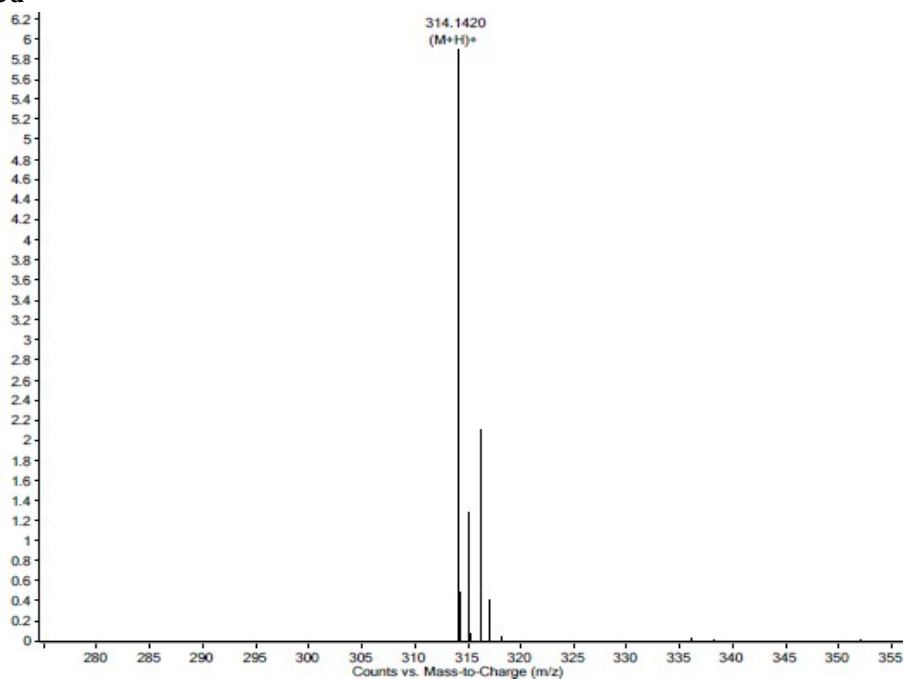
3b



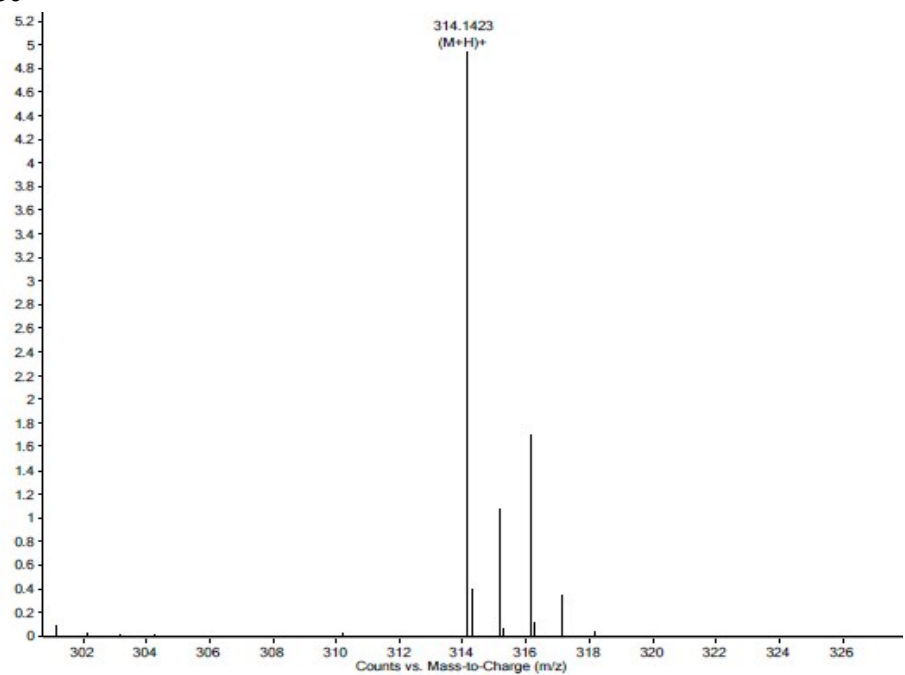
3c



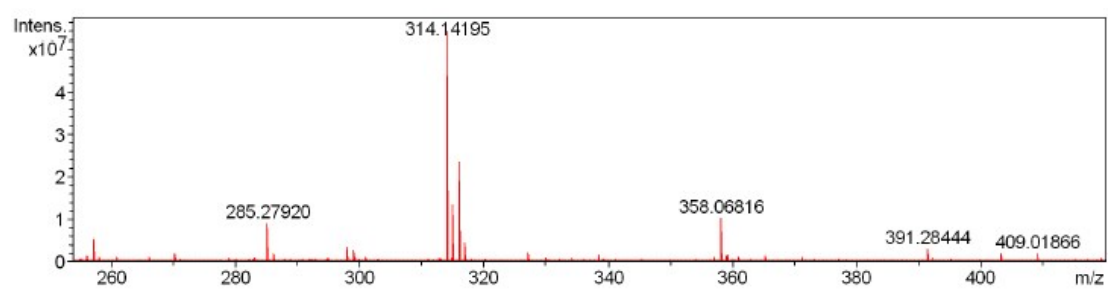
3d



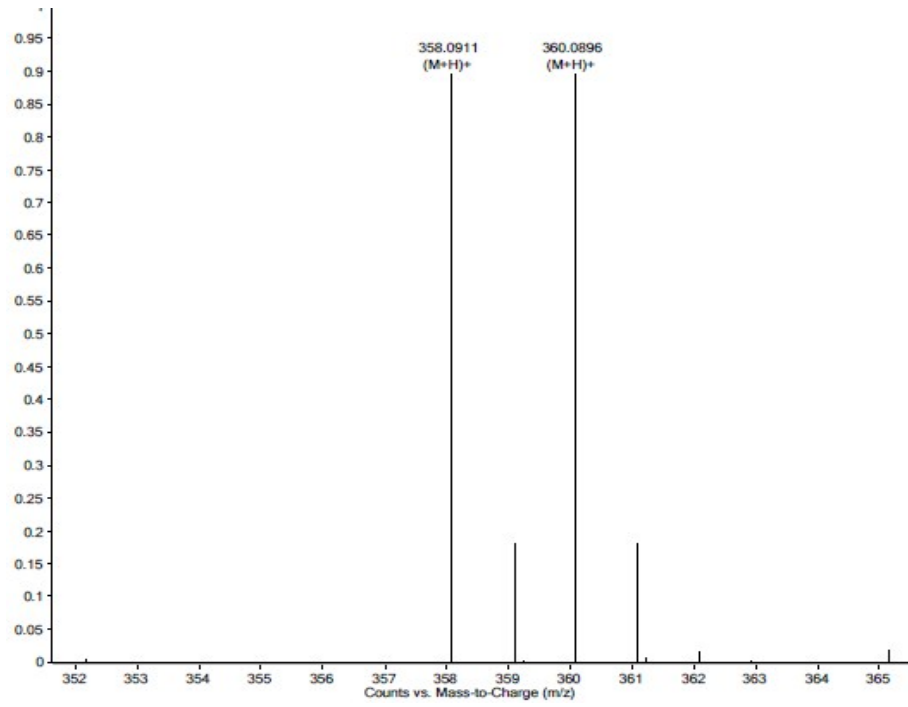
3e



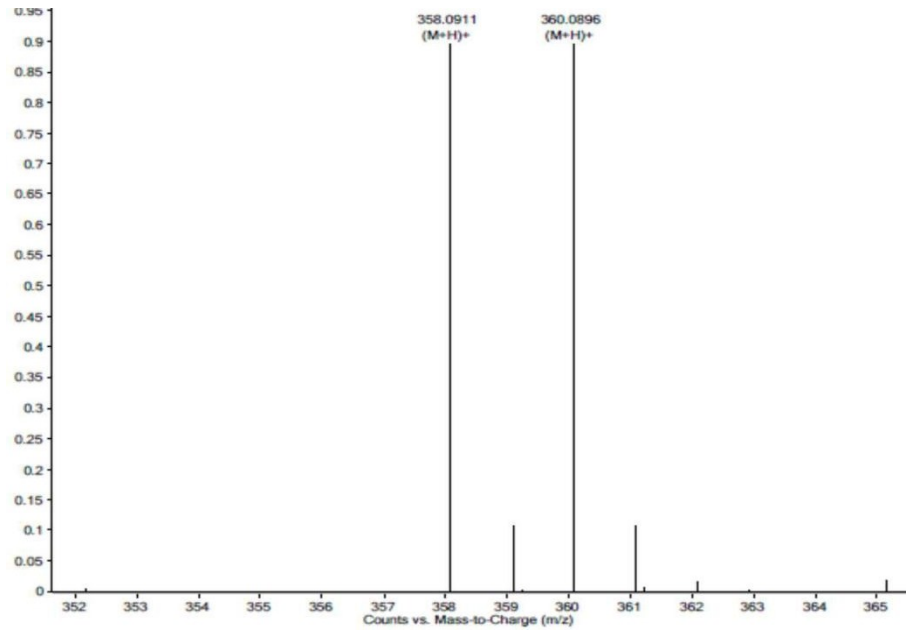
3f



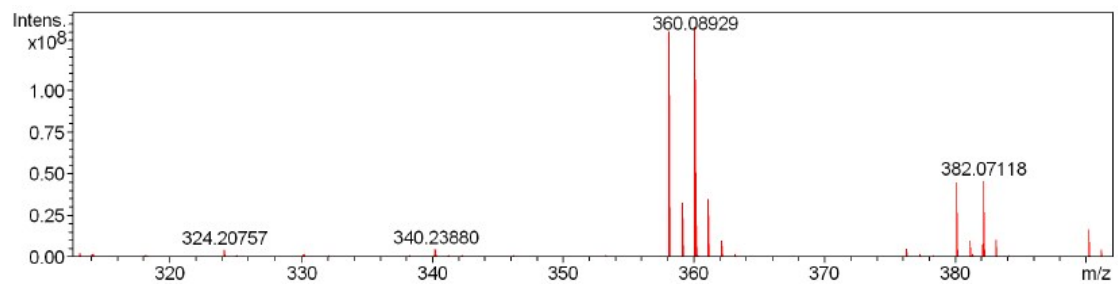
3g



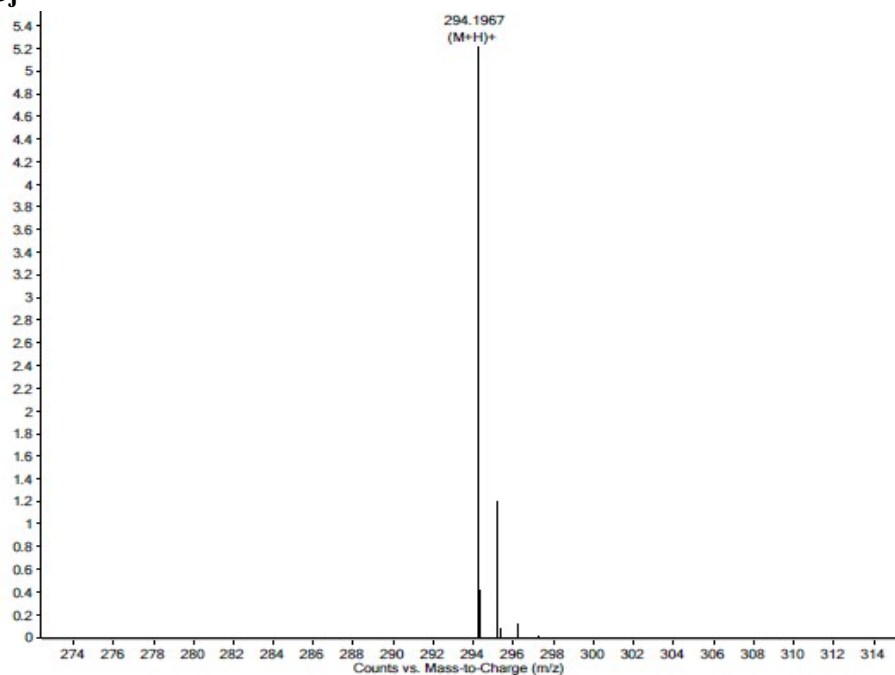
3h



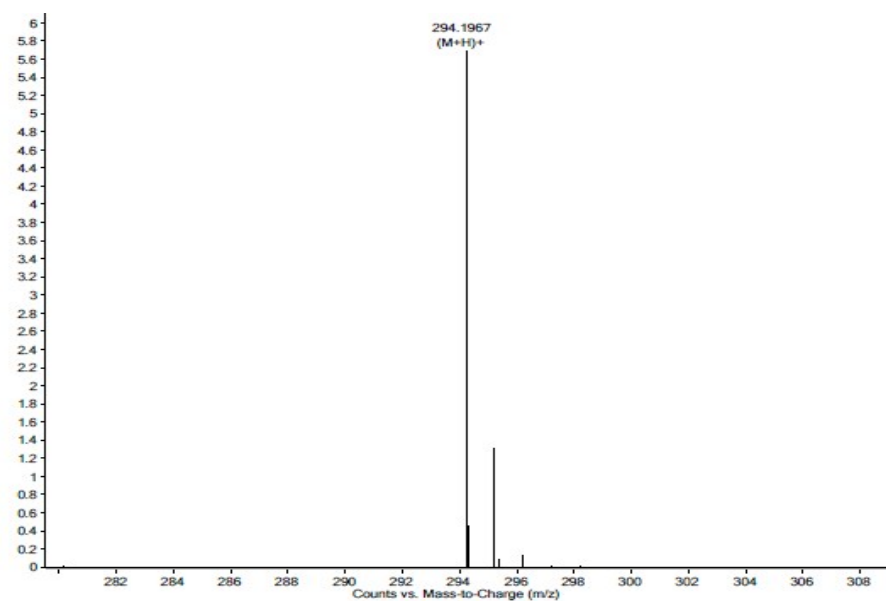
3i



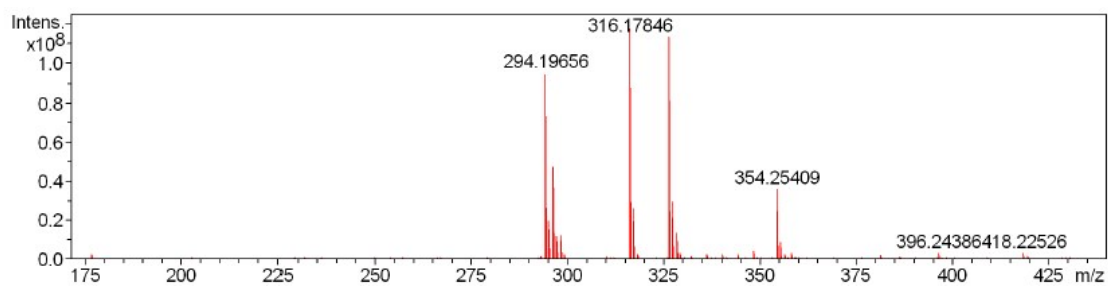
3j



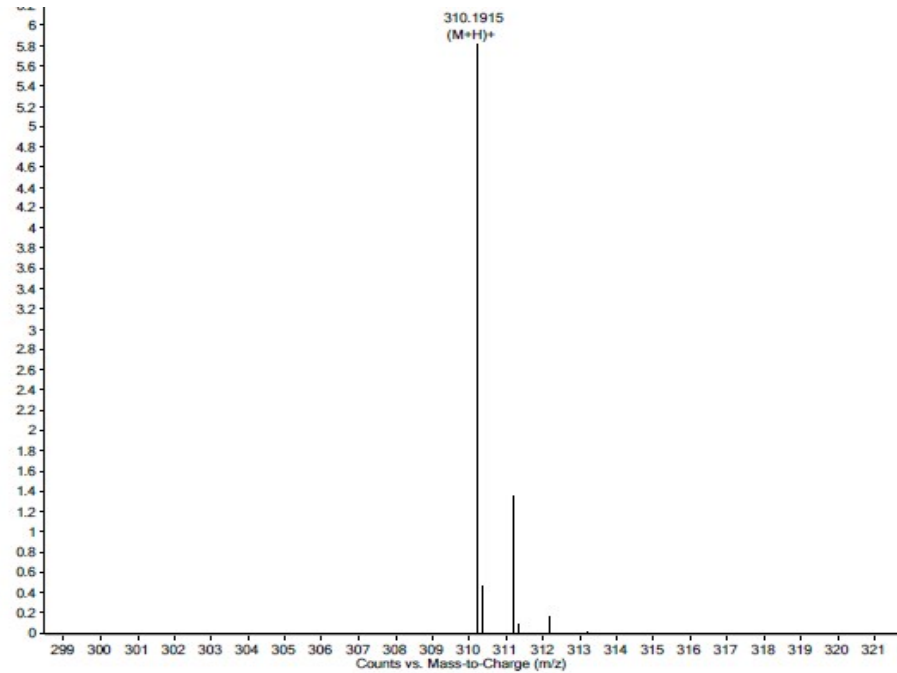
3k



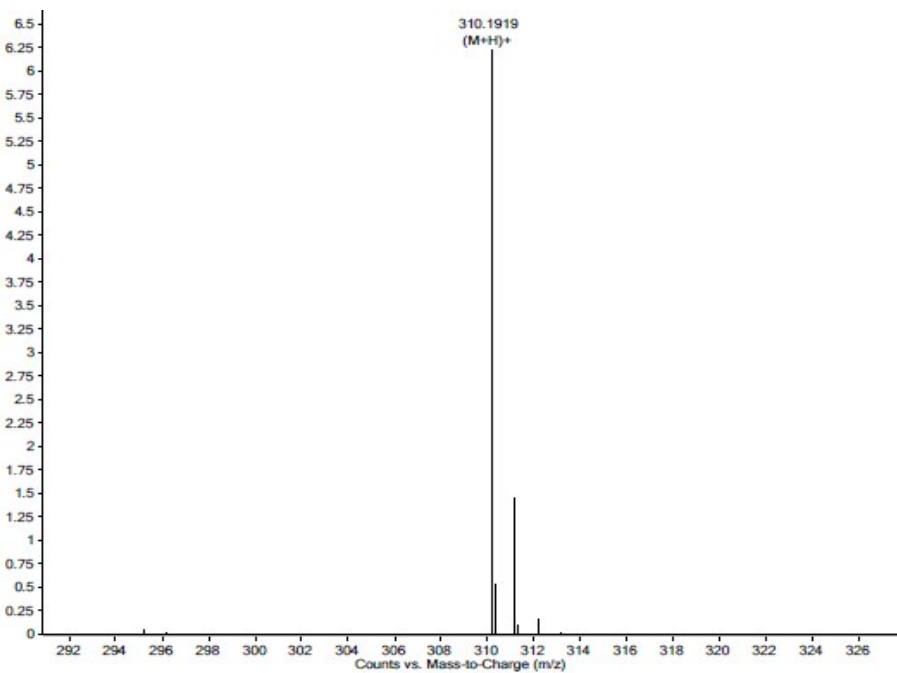
3l



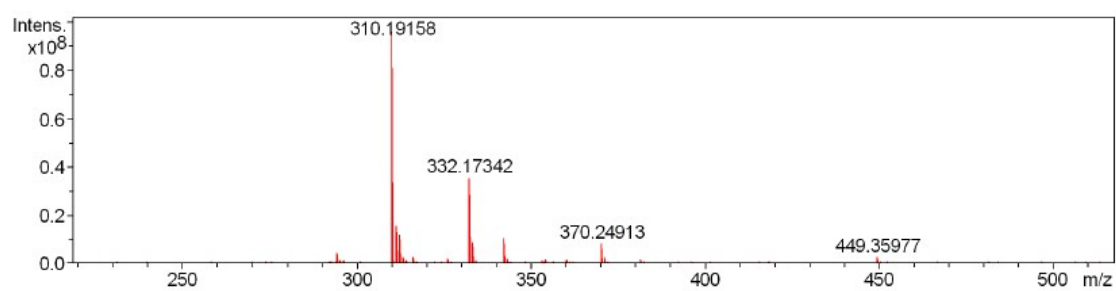
**3m**



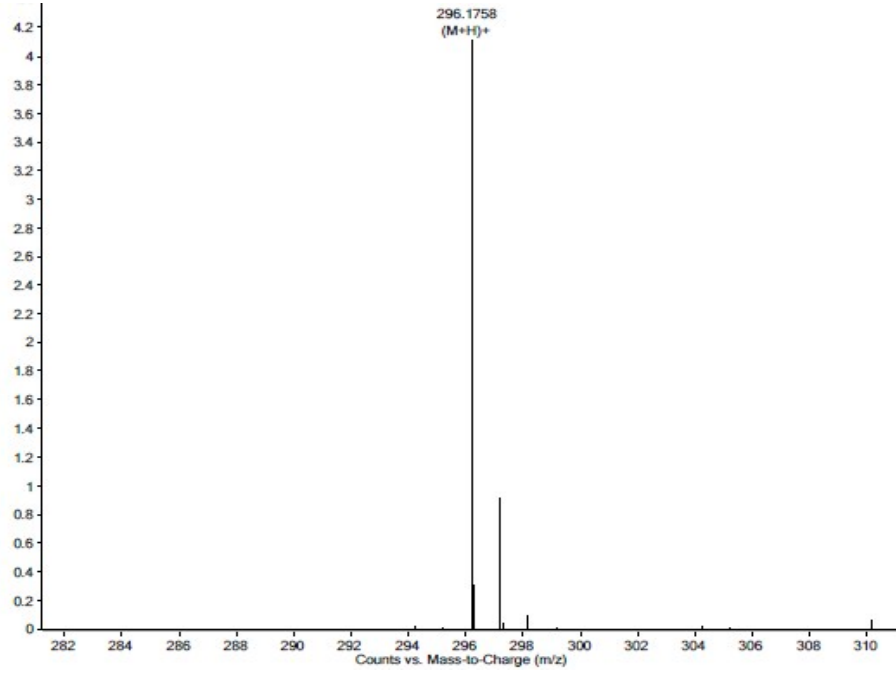
**3n**



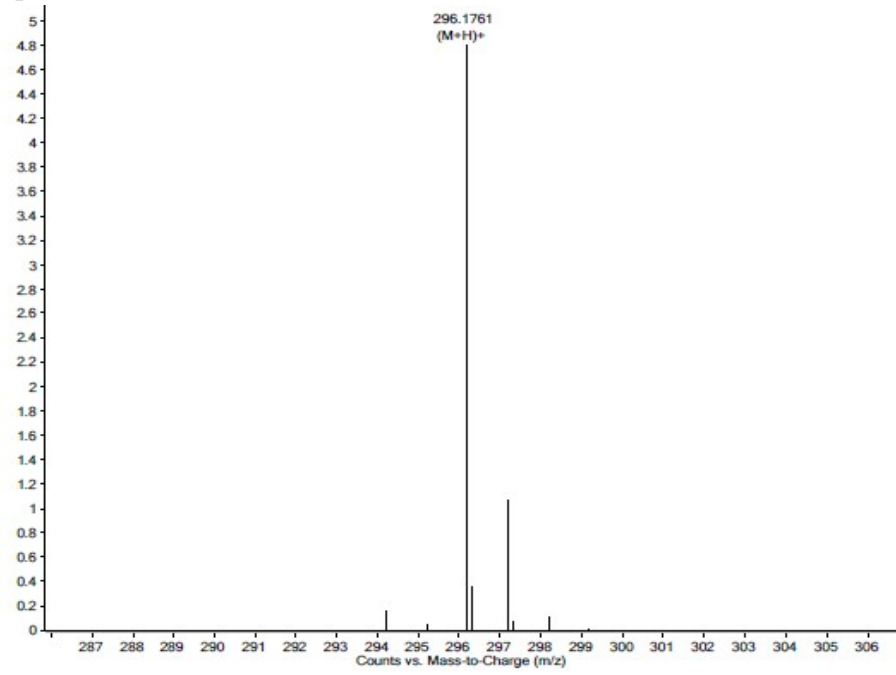
**3o**



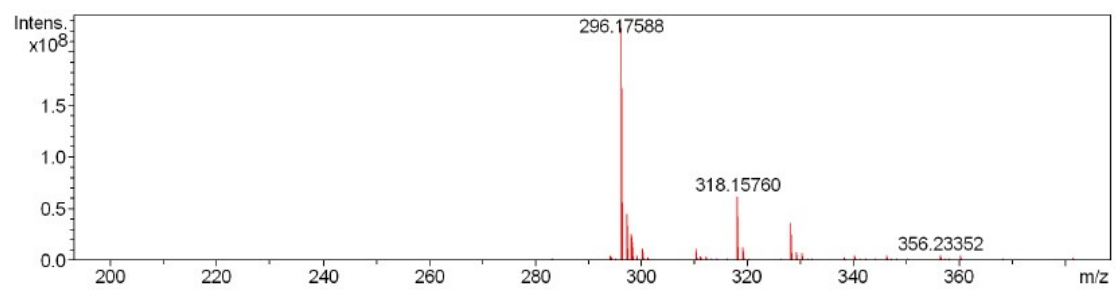
3p



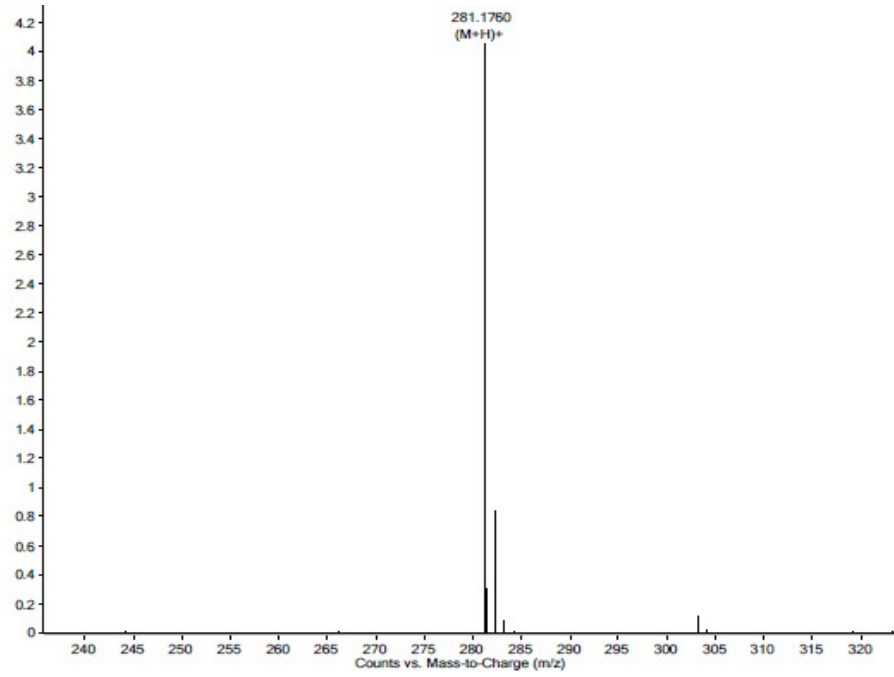
3q



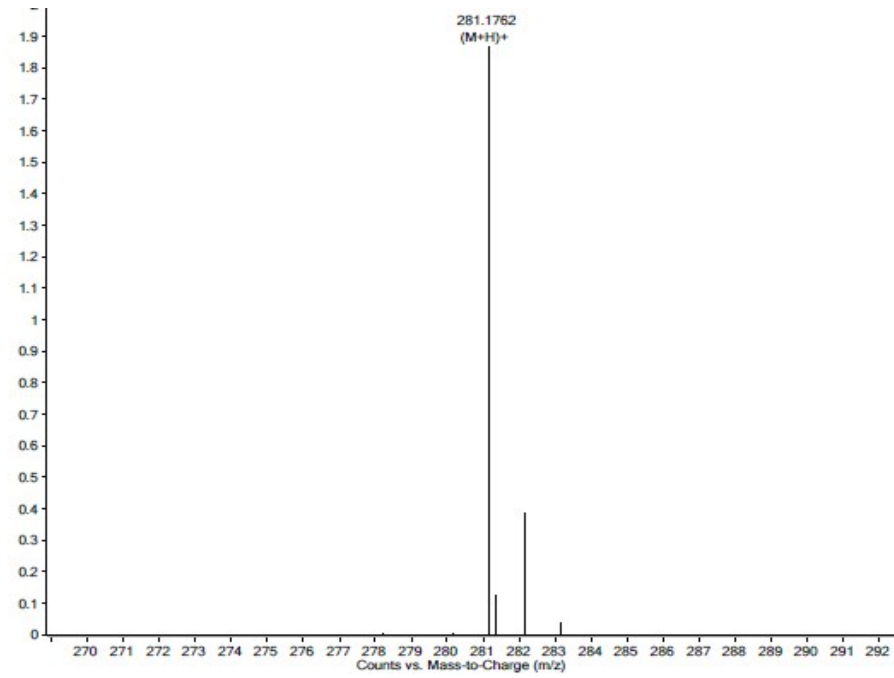
3r



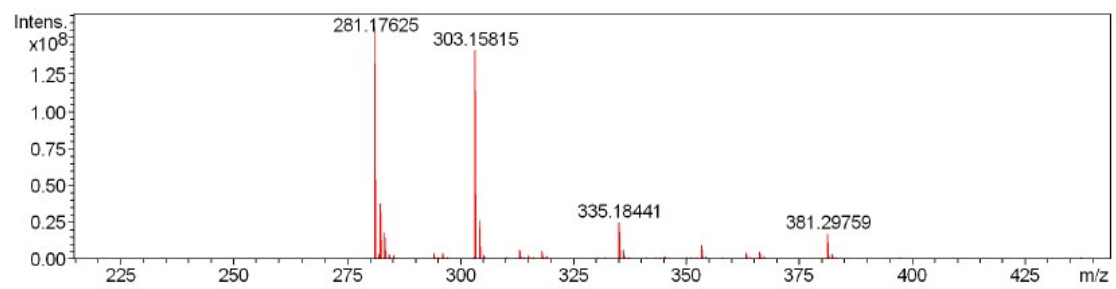
3s



3t

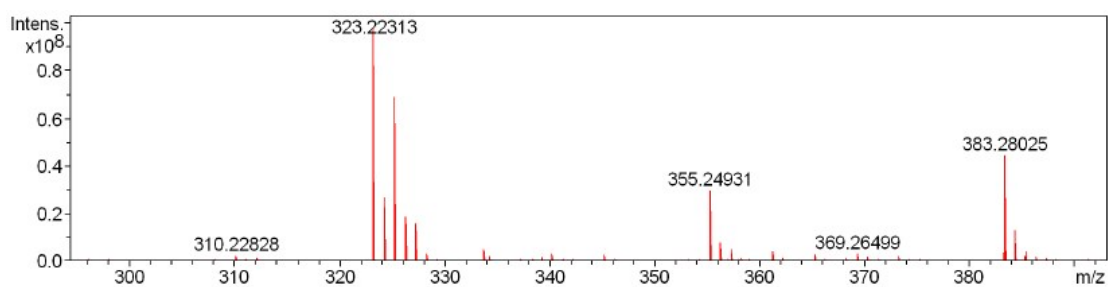


3u

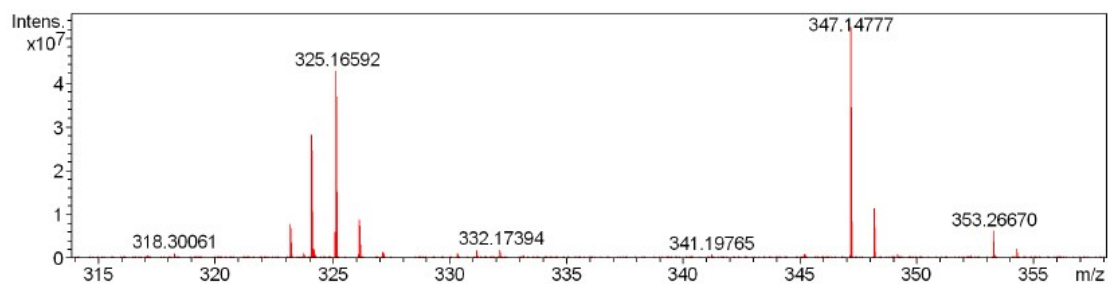




**3v**



**3w**



**3x**

