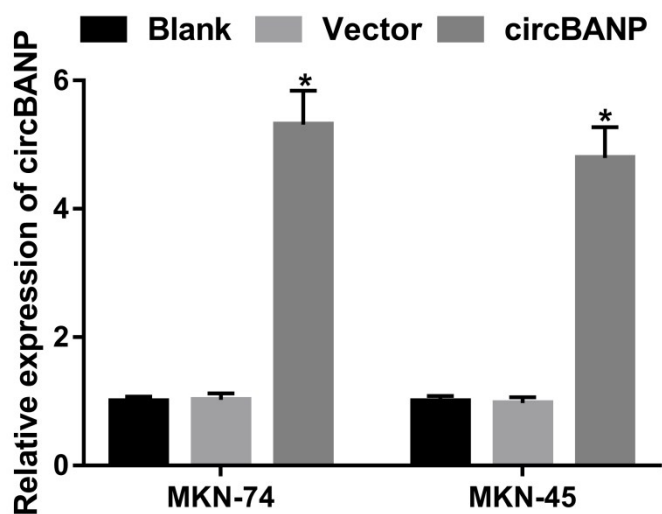


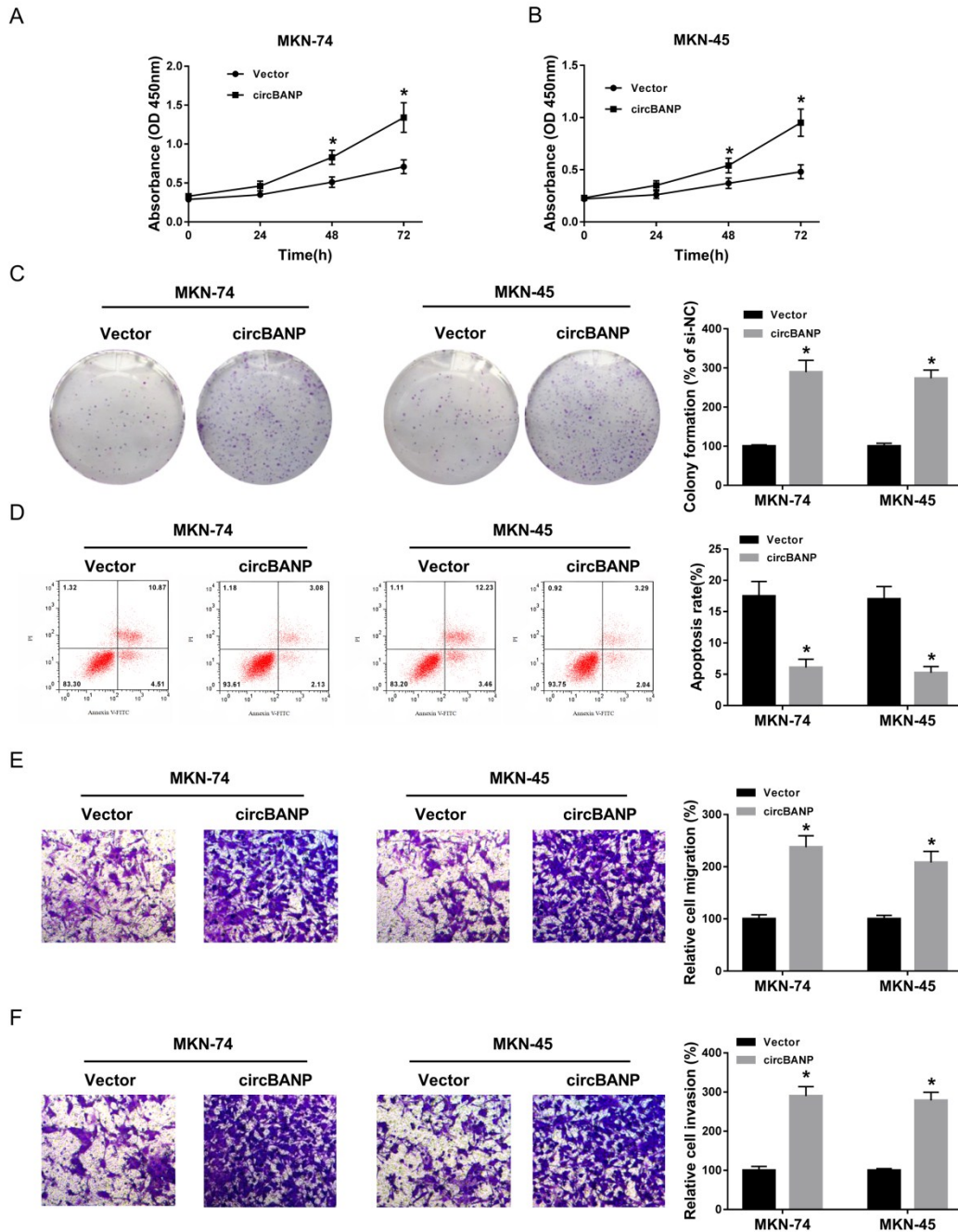
1



2

3

4 **Supplement Figure 1.** CircBANP expression was increased by transfection of
5 circBANP overexpression plasmid in GC cells. MKN-74 and MKN-45 cells were
6 transfected with blank, Vector or circBANP overexpression plasmid for 48 h,
7 followed by the detection of circBANP expression by qRT-PCR. CircBANP:
8 circBANP overexpression plasmid. * $P < 0.05$ v. Vector.



9

10 **Supplement Figure 2.** CircBANP overexpression enhanced cell proliferation, colony
 11 formation, migration and invasion and suppressed cell apoptosis in GC cells. MKN-
 12 74 and MKN-45 cells were transfected with Vector or circBANP overexpression
 13 plasmid, followed by the determination of cell proliferation by CCK-8 assay (A and
 14 B), cell colony formation using a standard colony formation assay (C), cell apoptosis

15 by flow cytometry (D), cell migration (E) and invasion (F) by transwell assay.

16 CircBANP: circBANP overexpression plasmid. * $P < 0.05$ v. Vector.

17 **Supplement Table 1.** Primers for PCR amplification were listed.

Primers for PCR (5'-3')

Divergent-circBANP	Forward	AGGGACACCTCCACATCGC
	Reverse	TGTAGCCAAGATGGAAGACCC
Convergent-linear-BANP	Forward	CGGCAGAACGCCATTGTA
	Reverse	ATTGTGGTGAAGGTGCCG
Divergent-GAPDH	Forward	GAAGGTGAAGGTCGAGTC
	Reverse	GAAGATGGTGATGGGATTTC
Convergent-linear-GAPDH	Forward	CAATGACCCCTTCATTGACC
	Reverse	TTGATTTTGGAGGGATCTCG
CircBANP	Forward	CAGGACGGTCAGCGTCGT
	Reverse	GGCACAGCGTTGCTAATGAC
Linear-BANP	Forward	TCGGCAGAACACCATTGTGG
	Reverse	G TTCAGGGTGATGAGCGTGAC
GAPDH	Forward	GAATGGGCAGCCGTTAGGAA
	Reverse	AAAAGCATCACCCGGAGGAG
Let-7a	Forward	CGATTCAGTGAGGTAGTAGGTTGT
	Reverse	TATGGTTGTTCTGCTCTCTGTCTC
FZD5	Forward	CGTTGCCACCTTCCTCATTGAC
	Reverse	GCACCAAGAATCCCAGTGACAC
U6	Forward	CTCGCTTCGGCAGCACA
	Reverse	AACGCTTCACGAATTTGCGT
