

Mesoporous Aluminium Manganese Cobalt Oxide with Pentahedron Structures for Energy Storage Devices

Chun Wu ^a, Ying Zhu ^{b,c}, Cao Guan^d, Chuankun Jia ^{a,*}, Wei Qin ^a, Xianyou Wang ^{e,*},

Kaili Zhang ^{b,c,*}

^a College of Materials Science and Engineering, Changsha University of Science and Technology, Changsha 410114, China

^b Department of Mechanical Engineering, City University of Hong Kong, 83 Tat Chee Avenue, Hong Kong

^c Shenzhen Research Institute, City University of Hong Kong, Shenzhen 518057, China

^d Institute of Flexible Electronics, Northwestern Polytechnical University, Xi'an, 710072 China

^e National Base for International Science & Technology Cooperation, National Local Joint Engineering Laboratory for Key Materials of New Energy Storage Battery, Hunan Province Key Laboratory of Electrochemical Energy Storage and Conversion, School of Chemistry, Xiangtan University, Xiangtan, 411105, China

* Corresponding author, E-mail address: jack2012ding@gmail.com, wxianyou@yahoo.com, kaizhang@cityu.edu.hk

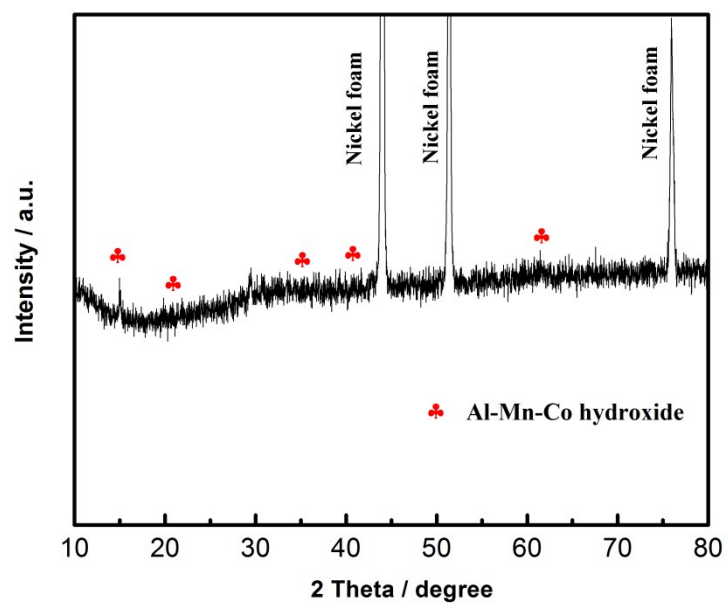


Figure S1 XRD pattern of the as-obtained AMCO precursor

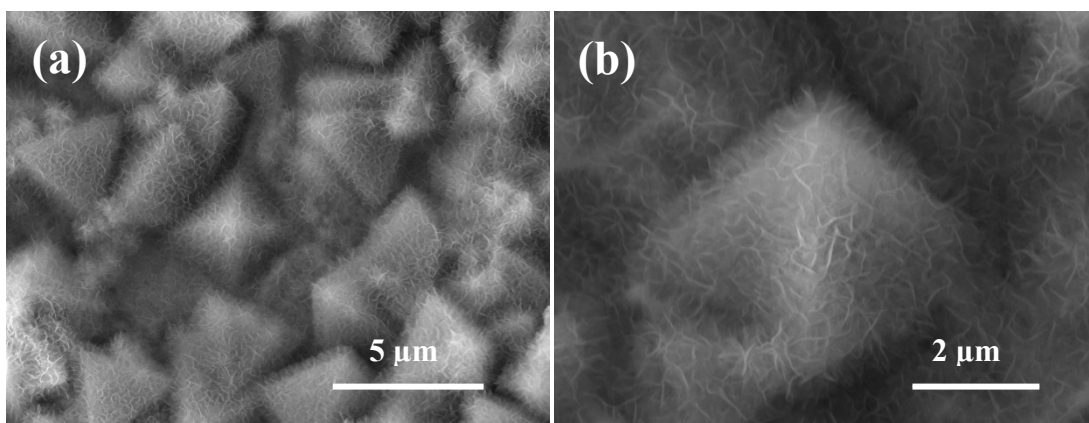


Figure S2 SEM images of the AMCO precursor materials

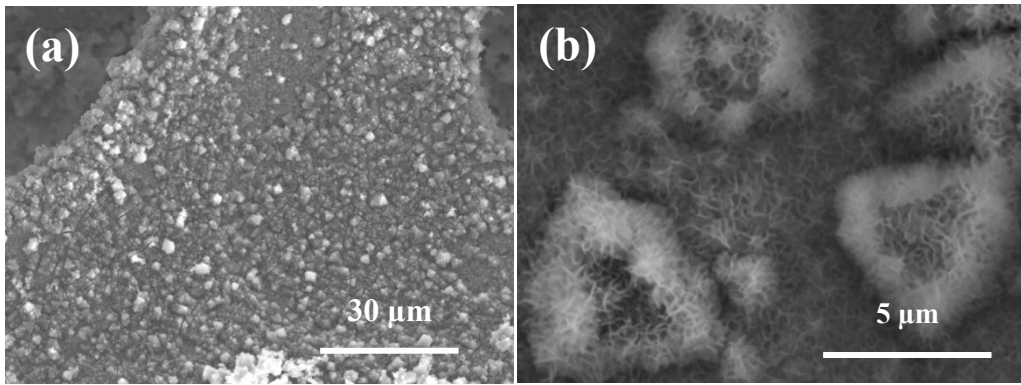


Figure S3 SEM images of the AMCO materials

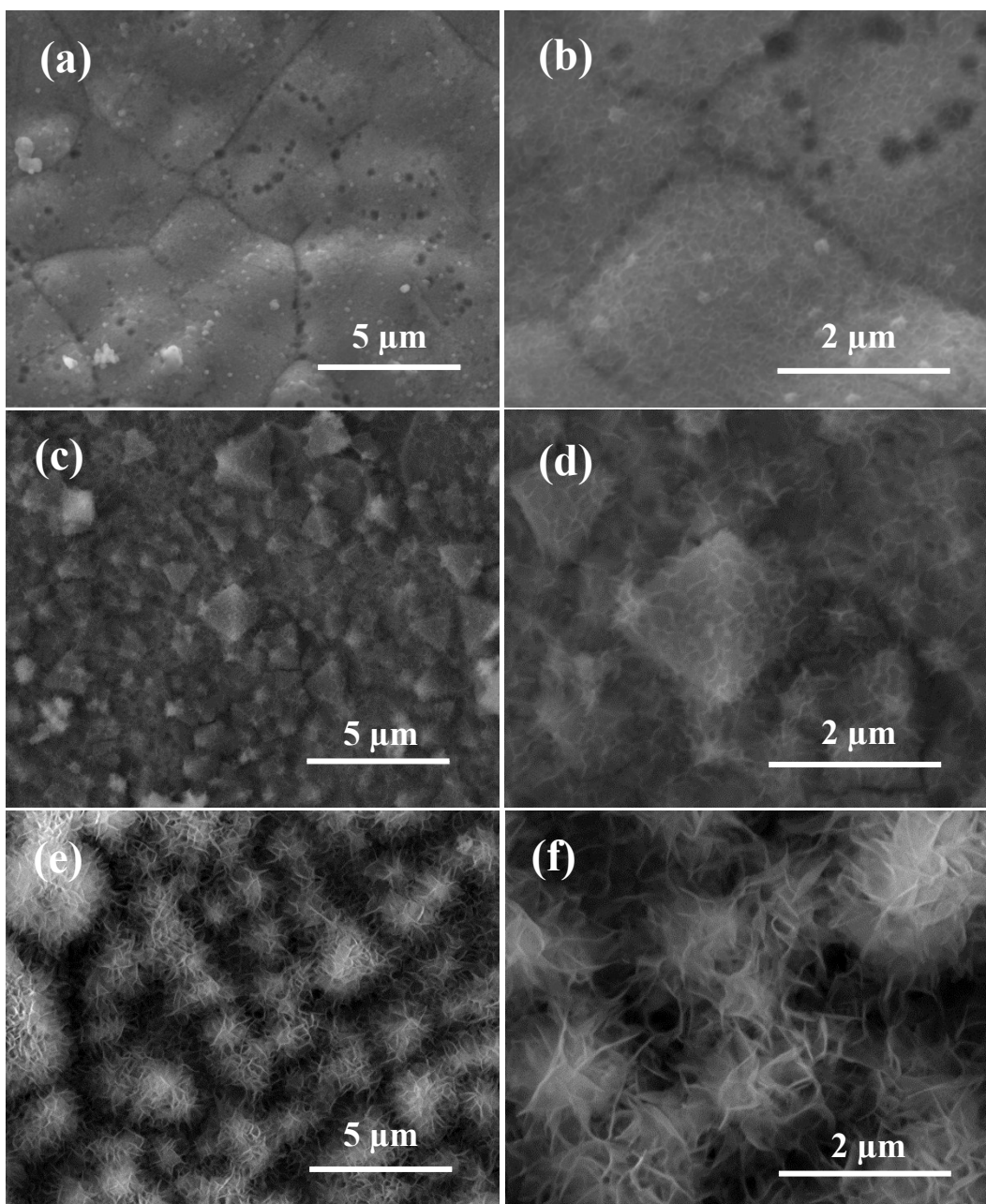


Figure S4 SEM images of the AMCO electrode materials prepared under different reaction times:

(a, b) 1h, (c, d) 2h and (e, f) 4h

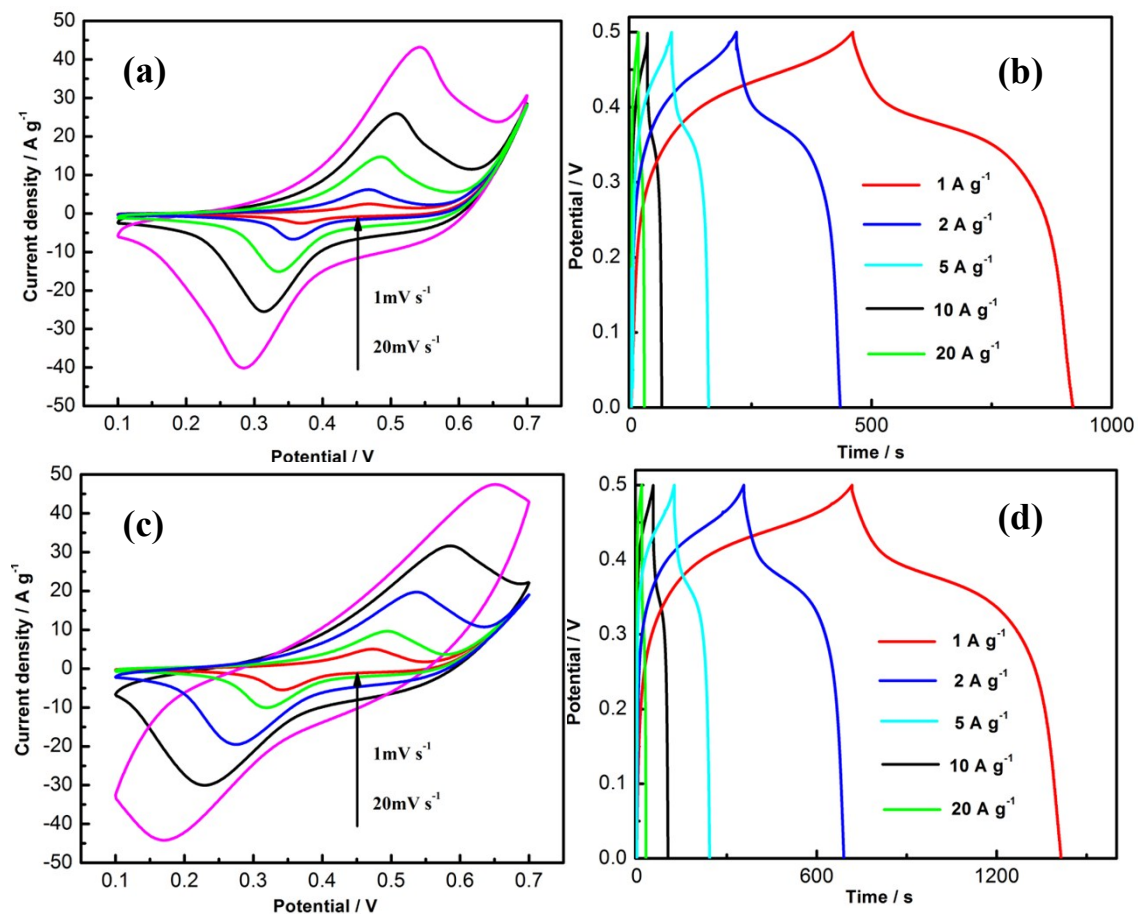


Figure S5 CV and the charge/discharge curves of the AMCO-2 (a, b) and AMCO-4 (c, d) electrode materials

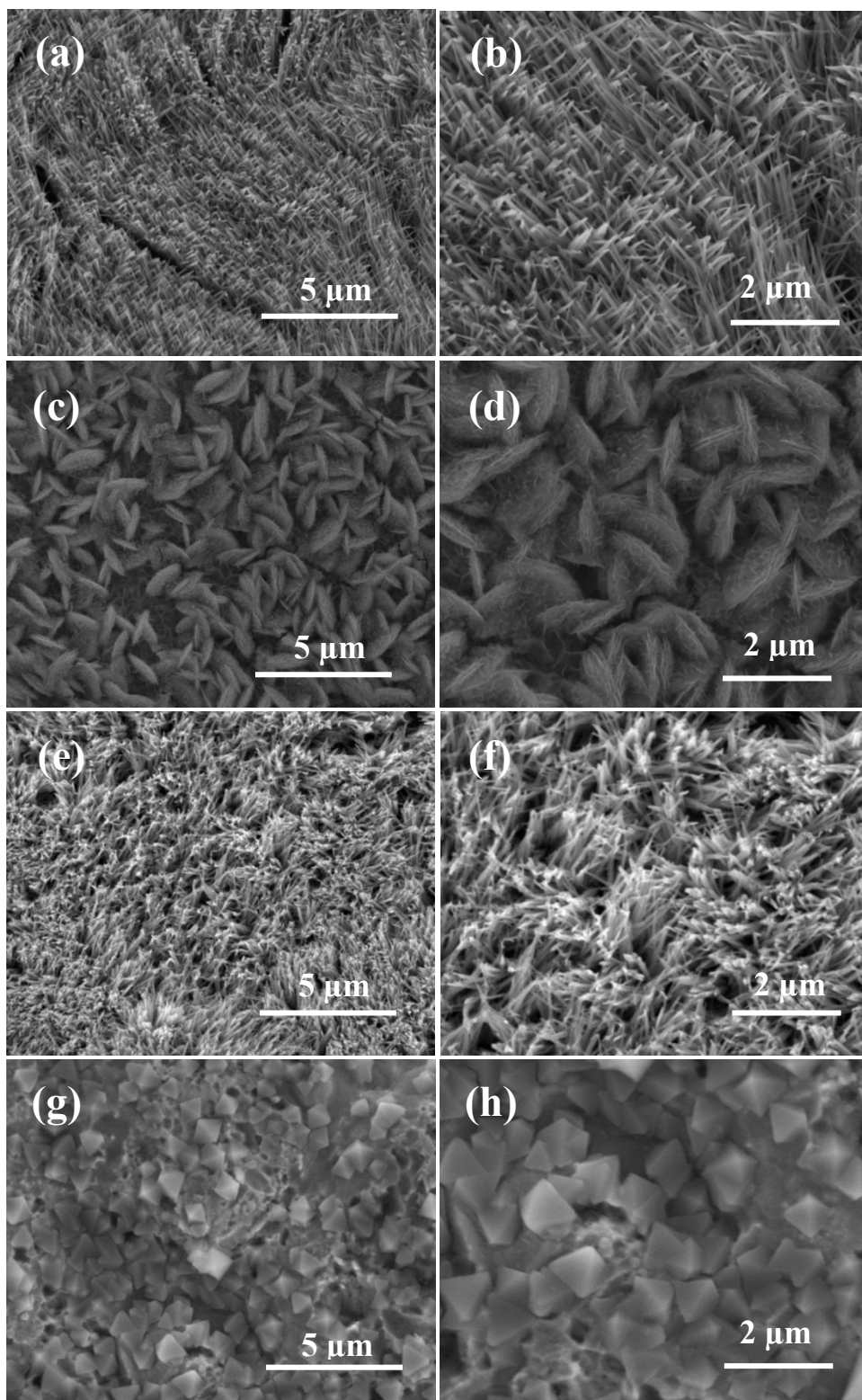


Figure S6 SEM images of the CO (a, b), MO (c, d), MCO (e, f) and ACO (g, h) electrode materials

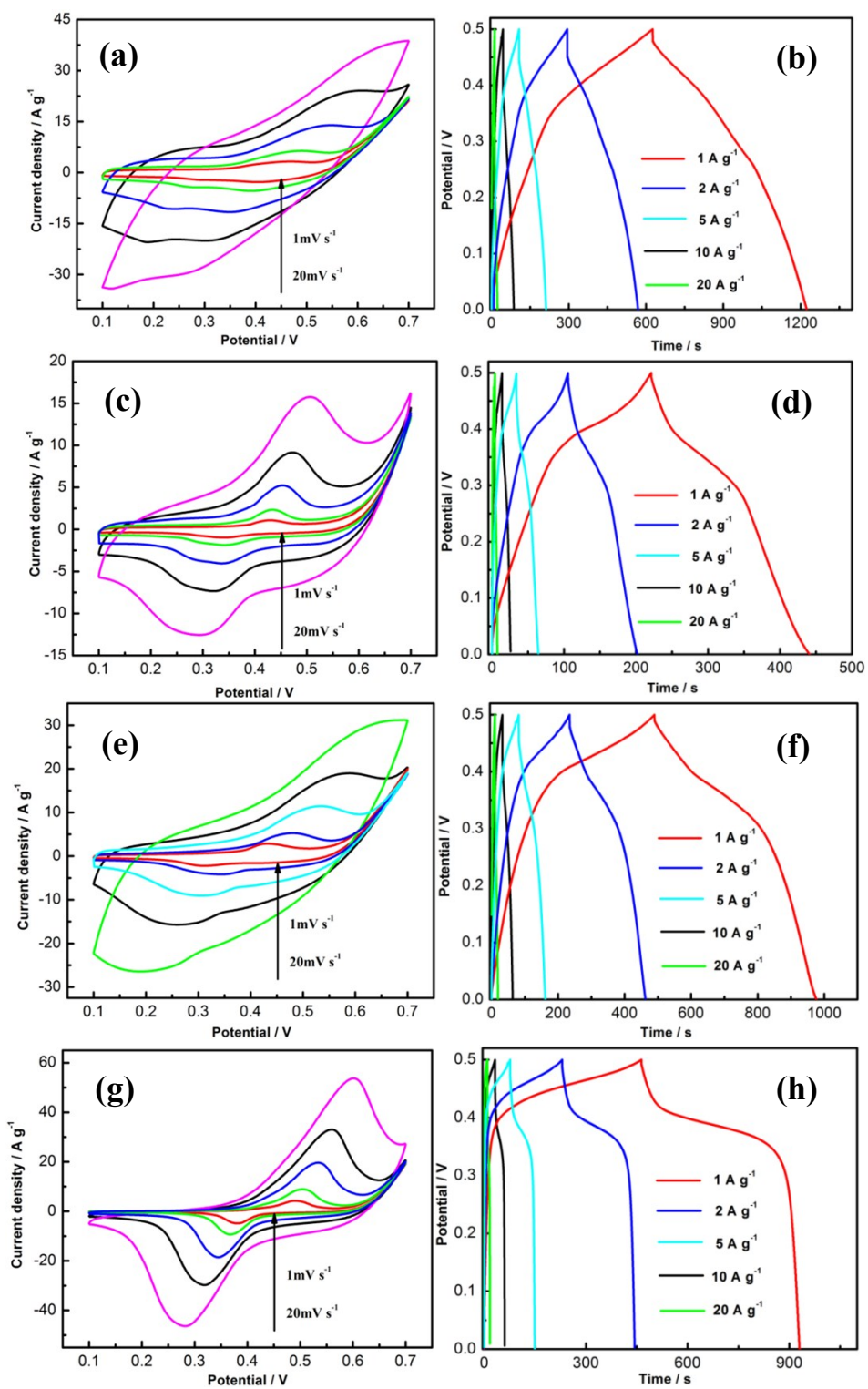


Figure S7 CV and charge/discharge curves of the CO (a, b), MO (c, d), MCO (e, f) and ACO (g, h) electrode materials

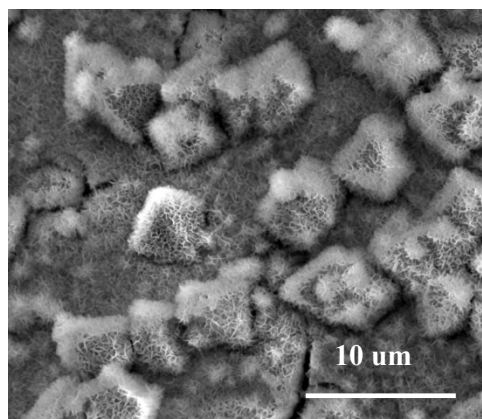


Figure S8 The SEM image of the AMCO electrode after 8000 cycles

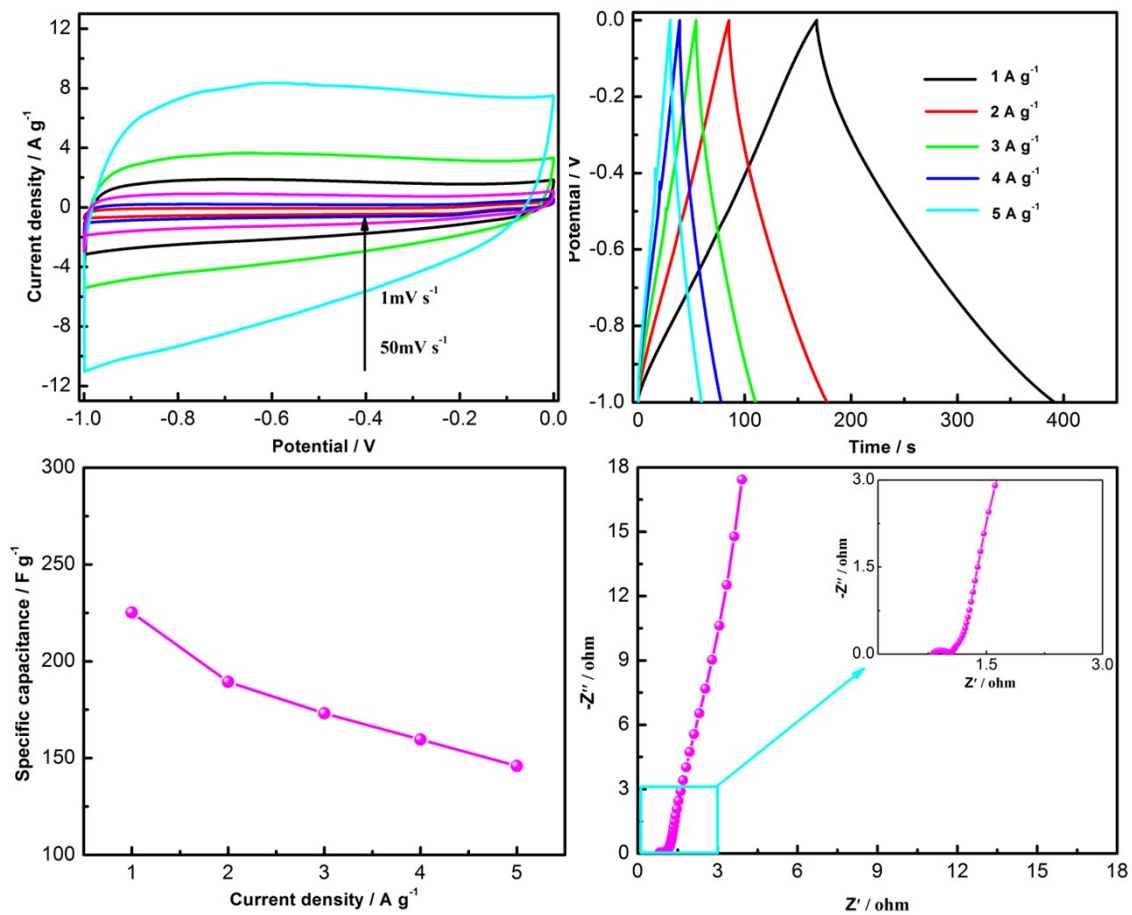


Figure S9 Electrochemical measurements of the AC electrode materials

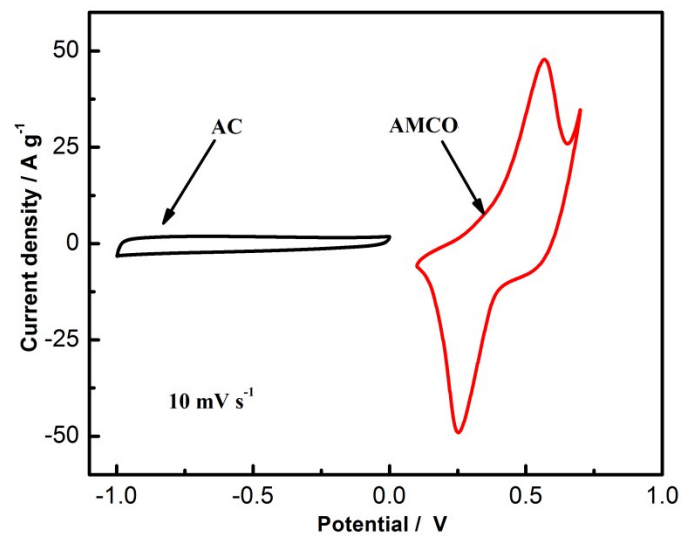


Figure S10 CV curves of the AC and AMCO electrode materials at 10 mV s⁻¹