

Supplementary Information

High energy density under high temperature in PLZST antiferroelectric ceramics

Pin Liu^a, Baoyan Fan^a, Guang Yang^{b,c}, Wenru Li^a, Haibo Zhang^{d*}, Shenglin Jiang^{a,e*}

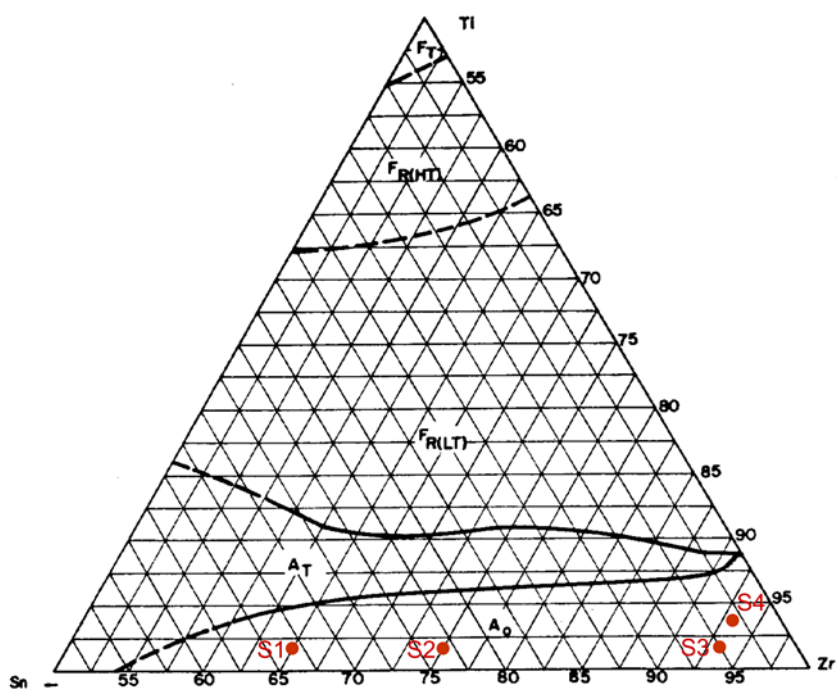


Fig. S1 PbZrO₃, PbTiO₃, PbSnO₃ ternary phase diagram, the selected compositions of AFE ceramics is marked by red dot.

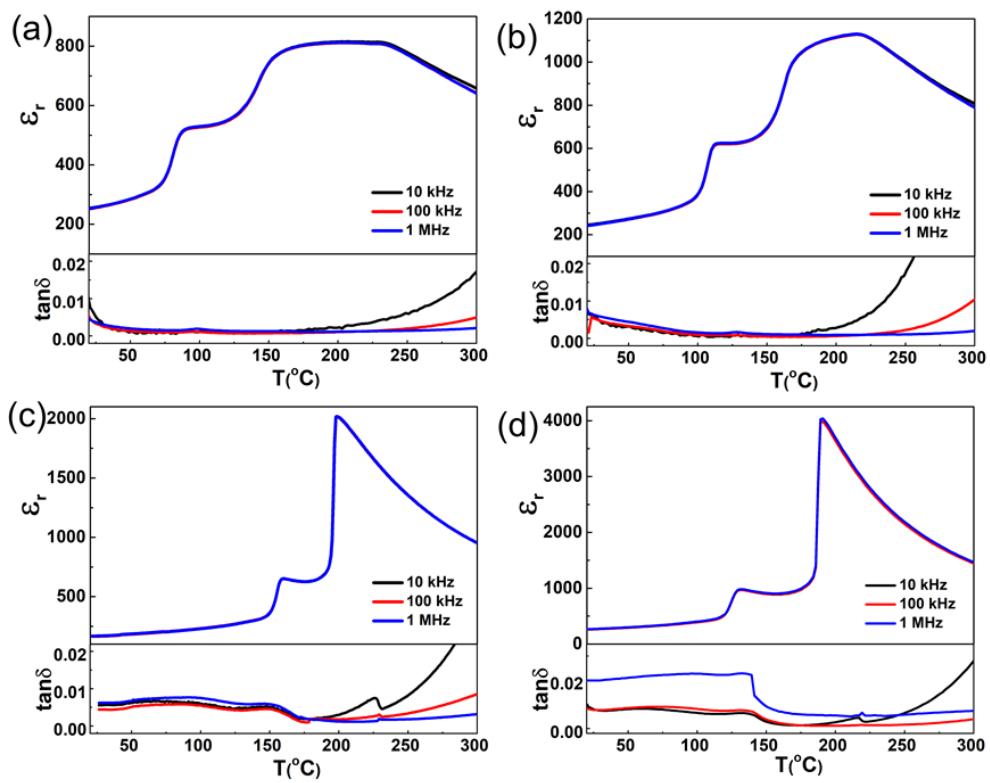


Fig. S2 The temperature-dependent dielectric properties of S1-S4.

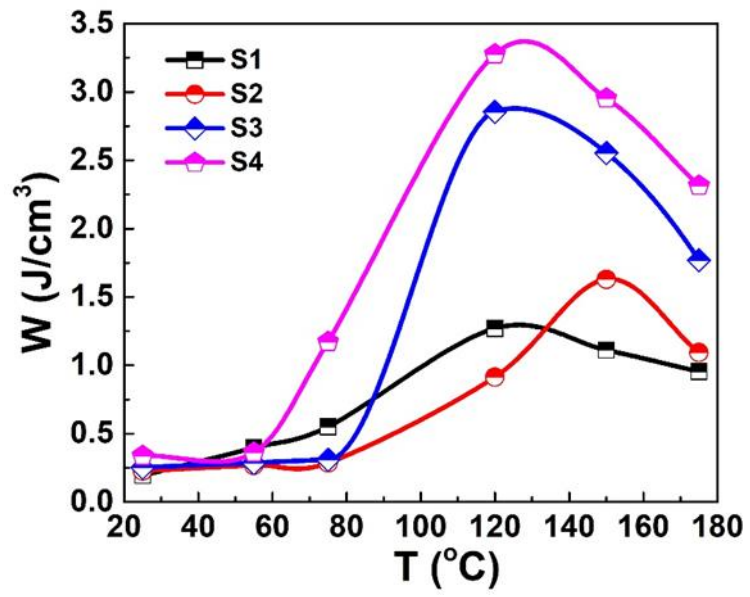


Fig. S3 The recoverable energy storage of S1-S4 under different temperature.

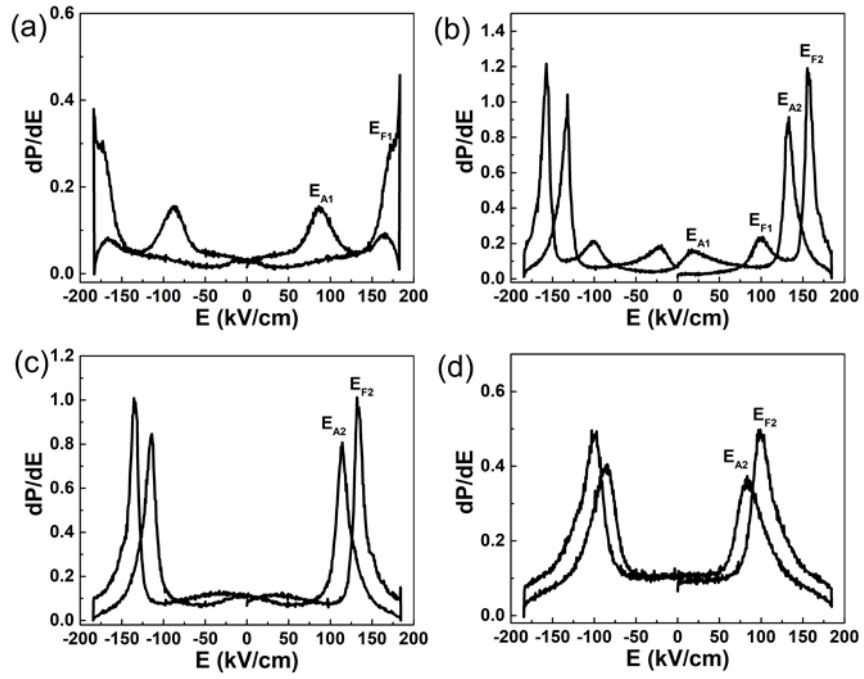


Fig. S4 The dP/dE - E loops of S4 at 25 °C, 50 °C, 75 °C, 120 °C, 150 °C, 175 °C.