

Supporting Information

Enhanced Long Wavelength Omnidirectional Photoresponses in Photonic-structured Perovskite Photodetectors

Ning Li, Weixia Lan, Ying Suet Lau, Linfeng Cai, Ali Asgher Syed, and Furong Zhu*

Department of Physics, Research Centre of Excellence for Organic Electronics, and Institute
of Advanced Materials, Hong Kong Baptist University, Kowloon, Hong Kong, China

*Corresponding Author: Email: frzhu@hkbu.edu.hk

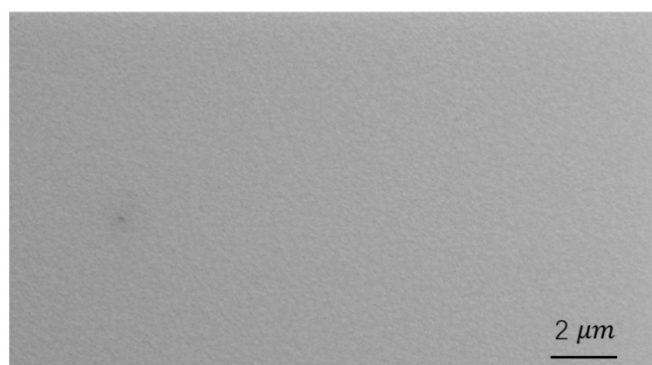


Fig. S1. The top view SEM image measured for the surface of the planar PEDOT:PSS HTL deposited on ITO/glass substrate.

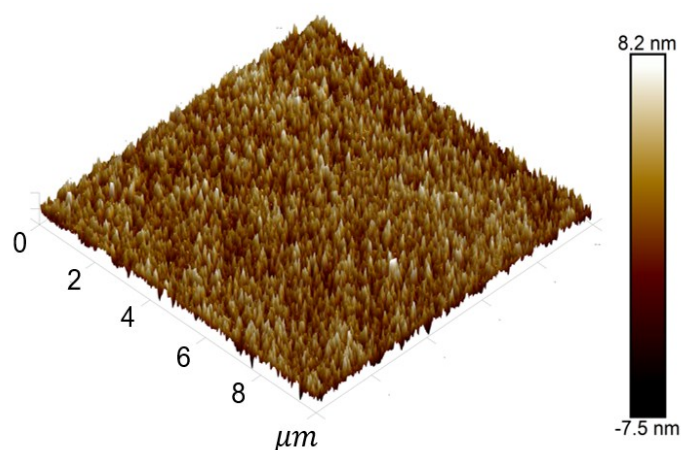


Fig. S2. The top view AFM image measured for the surface of the planar PEDOT:PSS HTL deposited on ITO/glass substrate.