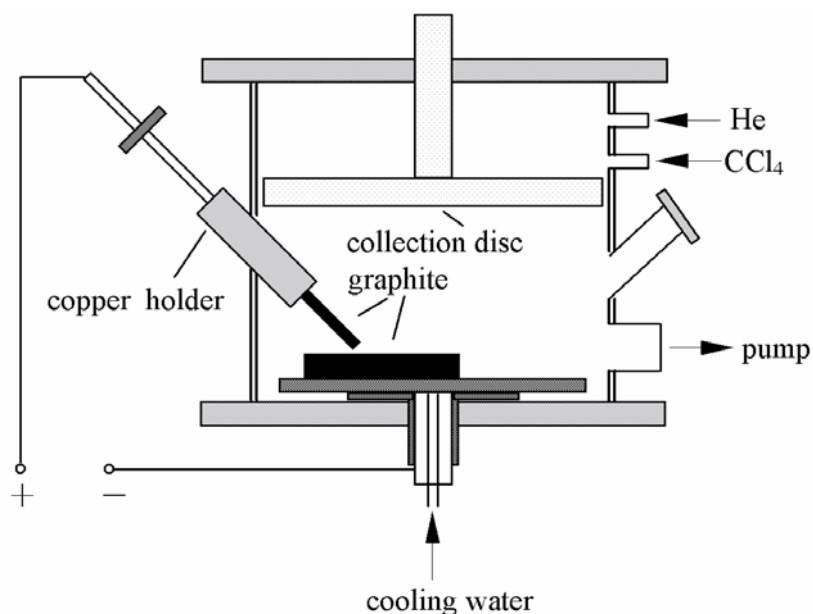
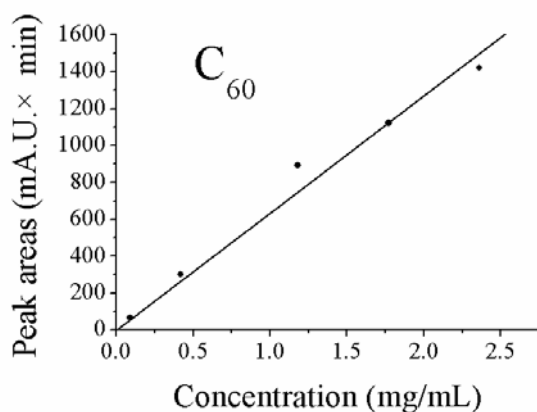


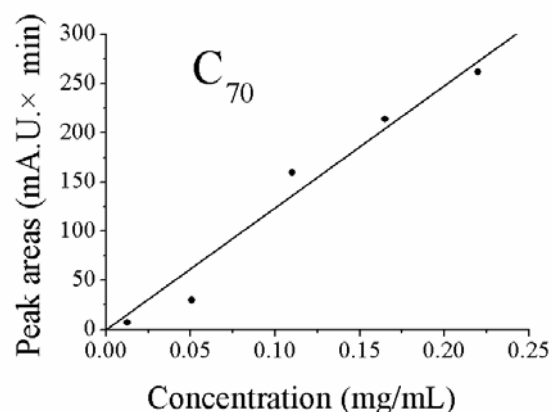
ESI 1: The graphite arc-discharge setup



ESI 2: Linear correlation plots of the chromatographic peak areas vs. fullerenes (C₆₀, C₇₀) concentrations



C₆₀
Injection volume: 20 μL
Linear equation: Y = 635 × X
Y - Peak area (mA.U. × min)
X - Concentration (mg/mL)
Correlation coefficient: R = 0.992
Limit of detection: 6 × 10⁻³ mg/mL



C₇₀
Injection volume: 20 μL
Linear equation: Y = 1238 × X
Y - Peak area (mA.U. × min)
X - Concentration (mg/mL)
Correlation coefficient: R = 0.984
Limit of detection: 3 × 10⁻³ mg/mL