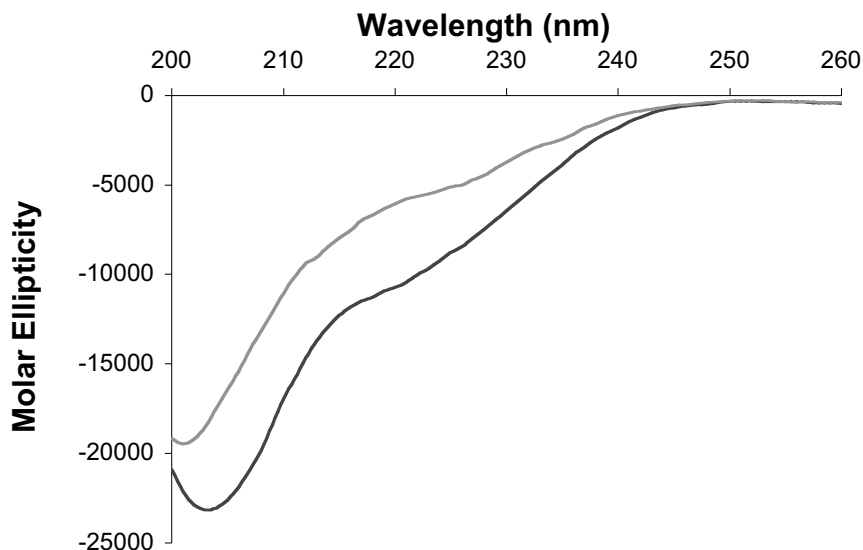


**Gadolinium-binding helix-turn-helix peptides:
DNA-dependent MRI contrast agents**

Peter Caravan,[†] Jaclyn M. Greenwood,[†] Joel T. Welch,[§] and Sonya J. Franklin^{§*}

Supplemental Figure S1. Circular Dichroism spectra of 50 μM apo-P3W (gray line) and GdP3W (3:1, black line) in 50 mM HEPES, pH = 7.4. Estimates of helicity based on $[\Theta]_{222}$ suggest that apo-P3W is ~18% and GdP3W is ~32% helical under these conditions.



Supplemental Figure S2. T1-weighted MR Images at 1.5 tesla of phantoms in HEPES buffer, pH 7.4, ambient temperature. 3D SPGR TR = 40, TE = 3.1, $\alpha = 75^\circ$. **Images:** a) HEPES; b) 80 μM P3W; c) 80 μM DNA (14-mer duplex); d) 115 μM GdDTPA; e) 115 μM GdDTPA + DNA (1:1); f) 8.6 μM GdP3W + DNA (1:1); g) 86 μM GdP3W; h) 86 μM GdP3W + DNA (1:1); i) 86 μM GdP3W + DNA (1:1) + NaCl (150 mM).

