

Supplementary information.

S1. HPLC data and MALDI-TOF MS spectra of the synthetic ferrocene-conjugated signaling DNA.

Signaling DNA: 5'-FcFcGCCACGCGGGGAGCAG-3'.

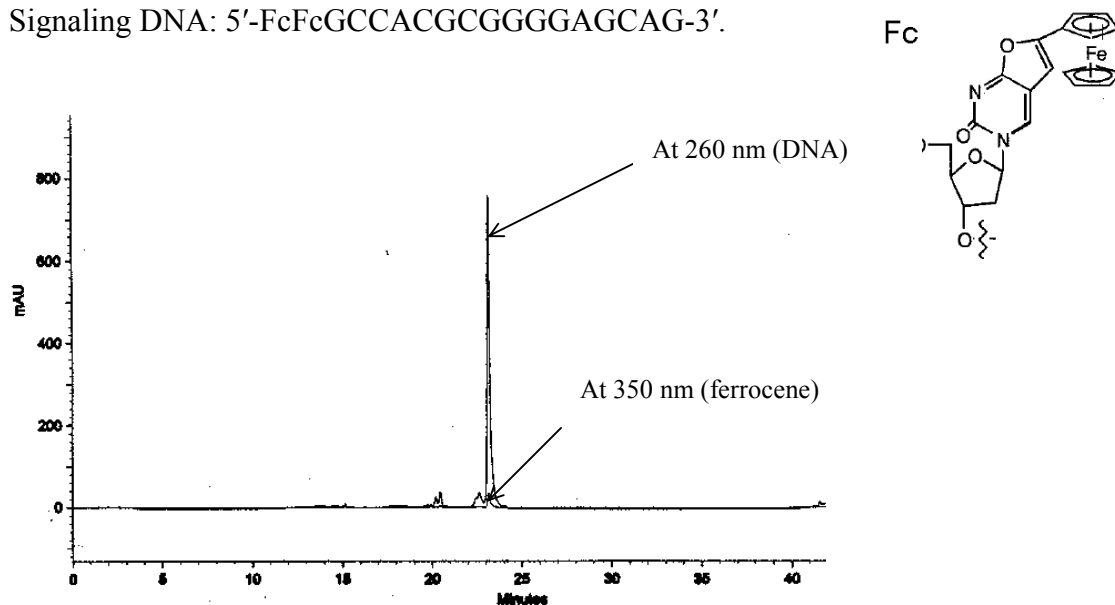


Figure S1. HPLC of signaling DNA

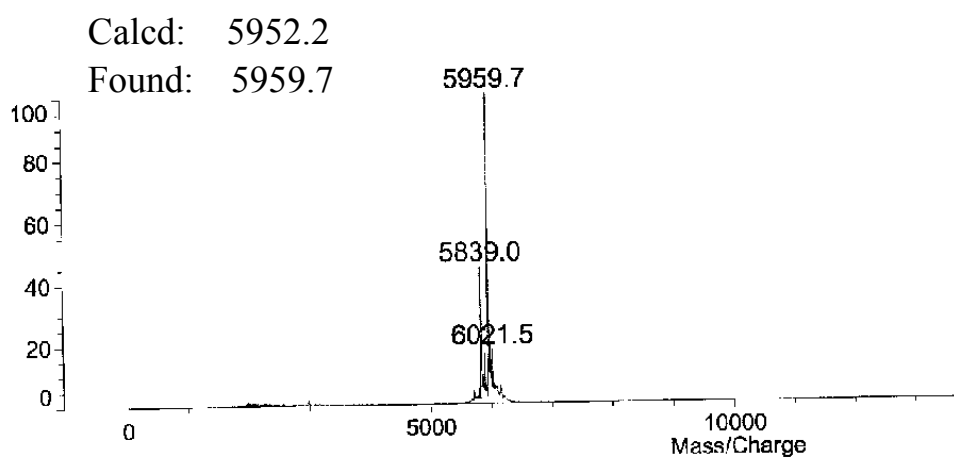
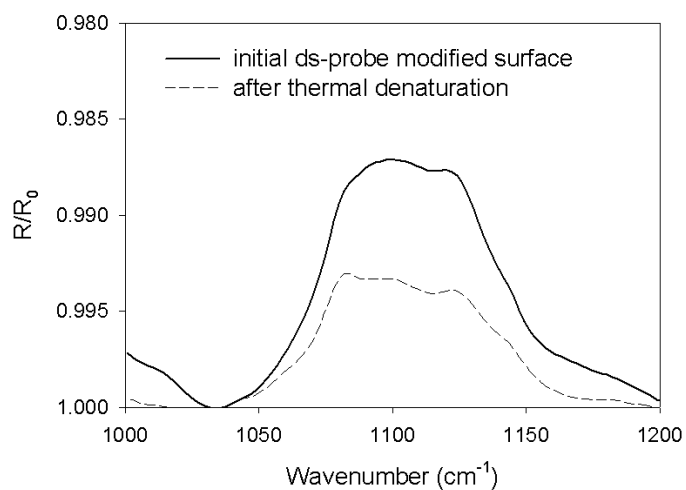


Figure S2. MALDI-TOF MS of signaling DNA

S2. Grazing angle reflectance FT-IR.



S3. Sequences of synthetic PCR product (codon 72, exon 4, *p53*) mimics.

Wild type

Forward:

5' GTT CAC TGA AGA CCC AGG TCC AGA TGA AGC TCC CAG AAT GCC AGA
GGC TGC TCC CCG CGT GGC CCC TGG ACC AGC AGC TCC TAC ACC GGC
GGC CCC TGC 3'

Mutant

Forward:

5' GTT CAC TGA AGA CCC AGG TCC AGA TGA AGC TCC CAG AAT GCC AGA
GGC TGC TCC CCC CGT GGC CCC TGG ACC AGC AGC TCC TAC ACC GGC
GGC CCC TGC 3'