

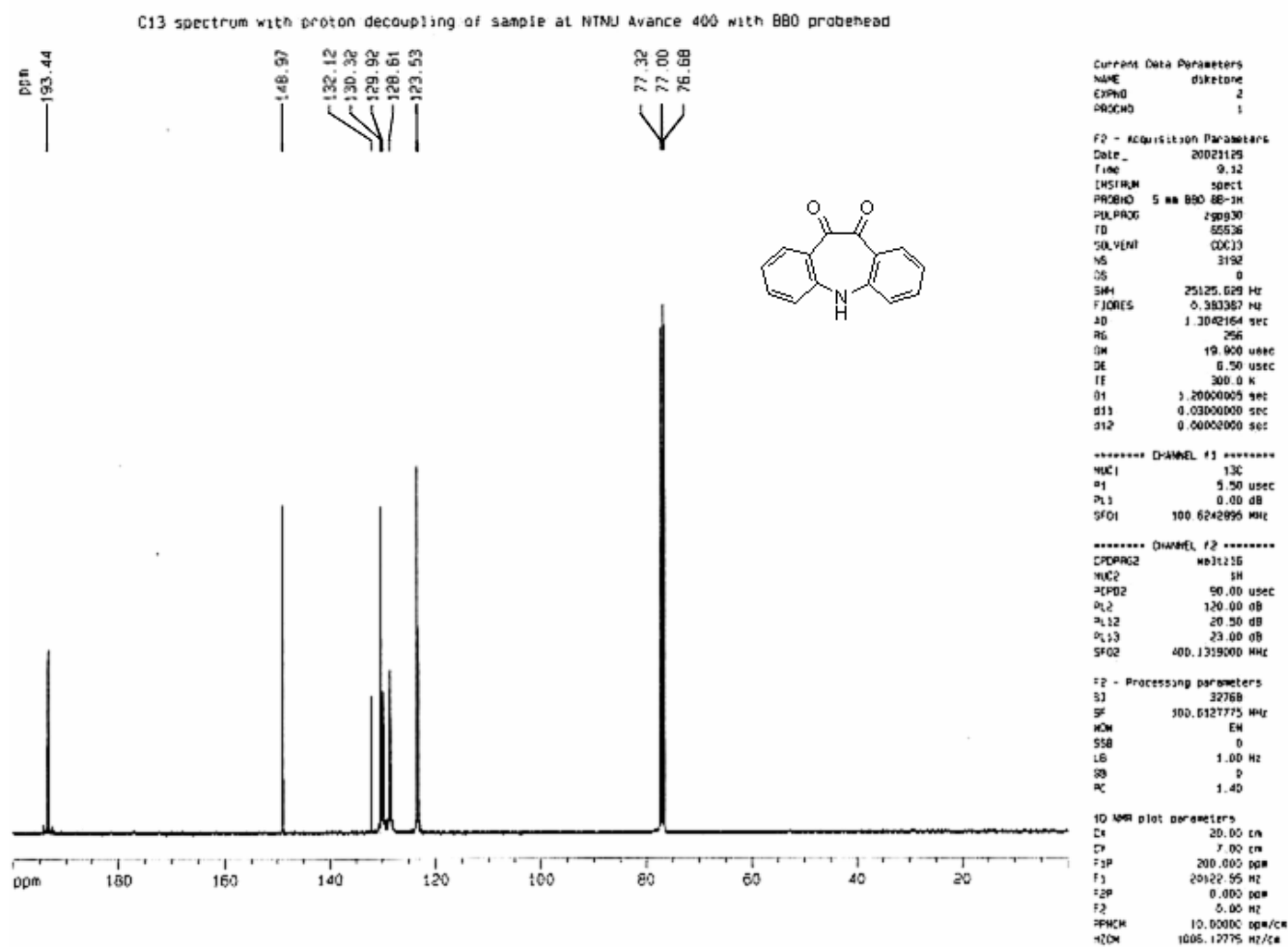
Current Data Parameters
 NAME diketone
 EXPNO 1
 PROCNO 1

F2 - Acquisition Parameters
 Date_ 20021129
 Time 9.08
 INSTRUM spect
 PROBHD 5 mm BBO BB-1H
 PULPROG zg30
 TD 16384
 SOLVENT CDCl3
 NS 17
 DS 0
 SWH 5995.204 Hz
 FIDRES 0.365916 Hz
 AQ 1.3664756 sec
 RG 203.2
 DM 63.400 usec
 DE 6.50 usec
 TE 300.0 K
 D1 1.50000000 sec

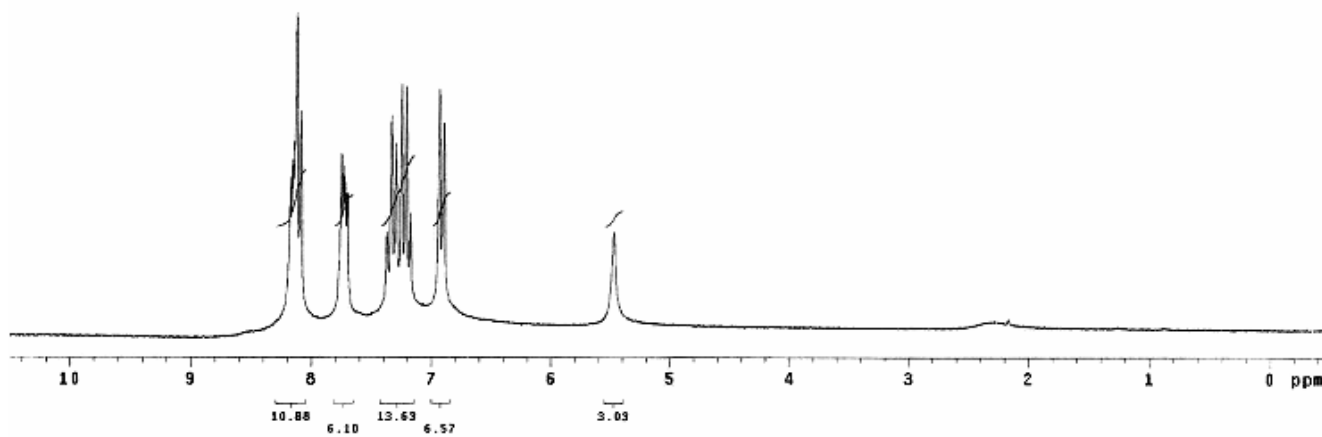
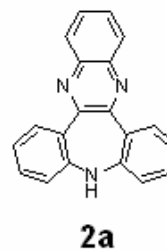
***** CHANNEL f1 *****
 NUC1 1H
 P1 7.10 usec
 PL1 0.00 dB
 SFO1 400.1326008 MHz

F2 - Processing parameters
 SI 16384
 SF 400.1300081 MHz
 HDW EM
 SSB 0
 LB 0.10 Hz
 GB 0
 PC 1.00

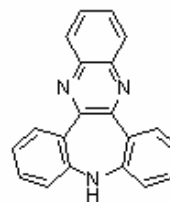
1D NMR plot parameters
 CX 20.00 cm
 CY 10.50 cm
 F1P 12.000 ppm
 F1 4801.56 Hz
 F2P -0.500 ppm
 F2 -200.06 Hz
 SFOCM 0.62500 ppm/
 HZCM 250.08125 Hz/c



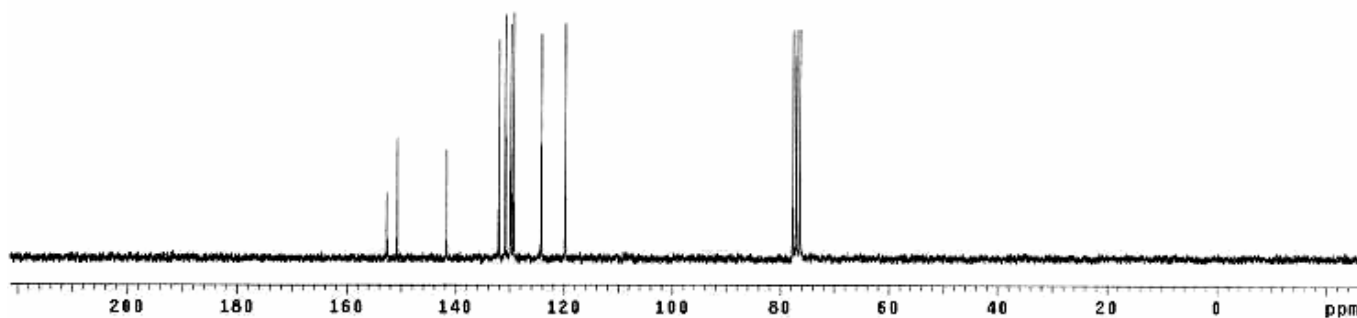
INDEX	FREQUENCY (PPM)	HEIGHT
1	8.178	0.5
2	8.159	0.5
3	8.145	0.6
4	8.132	0.9
5	8.094	0.7
6	7.754	0.5
7	7.737	0.5
8	7.722	8.4
9	7.705	0.4
10	7.375	0.3
11	7.339	0.6
12	7.300	0.6
13	7.253	0.7
14	7.214	0.7
15	7.177	0.3
16	6.938	0.7
17	6.899	0.6
18	5.474	0.3

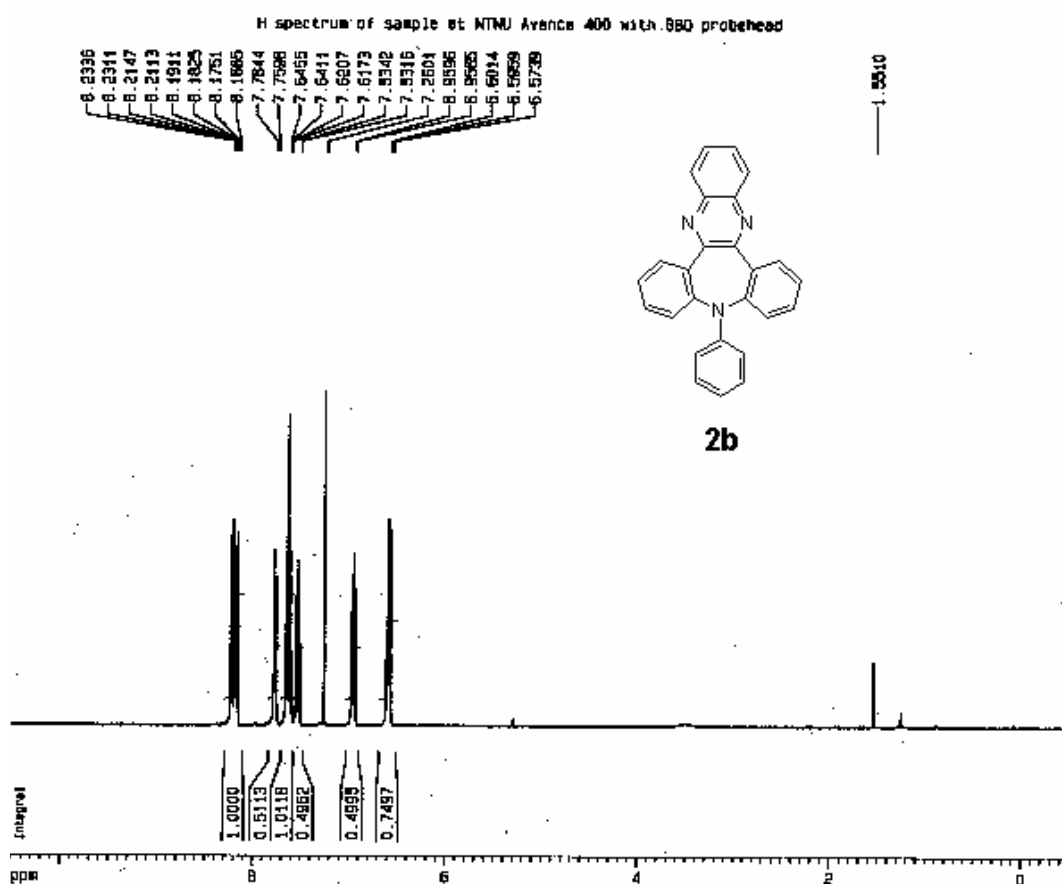


INDEX	FREQUENCY (PPM)	HEIGHT
1	152.633	0.2
2	150.737	0.4
3	141.708	0.4
4	132.014	0.7
5	130.800	0.8
6	129.845	0.8
7	129.708	0.4
8	128.298	0.8
9	124.216	0.8
10	118.770	0.8
11	77.637	0.8
12	77.000	0.8
13	76.363	0.8



2a





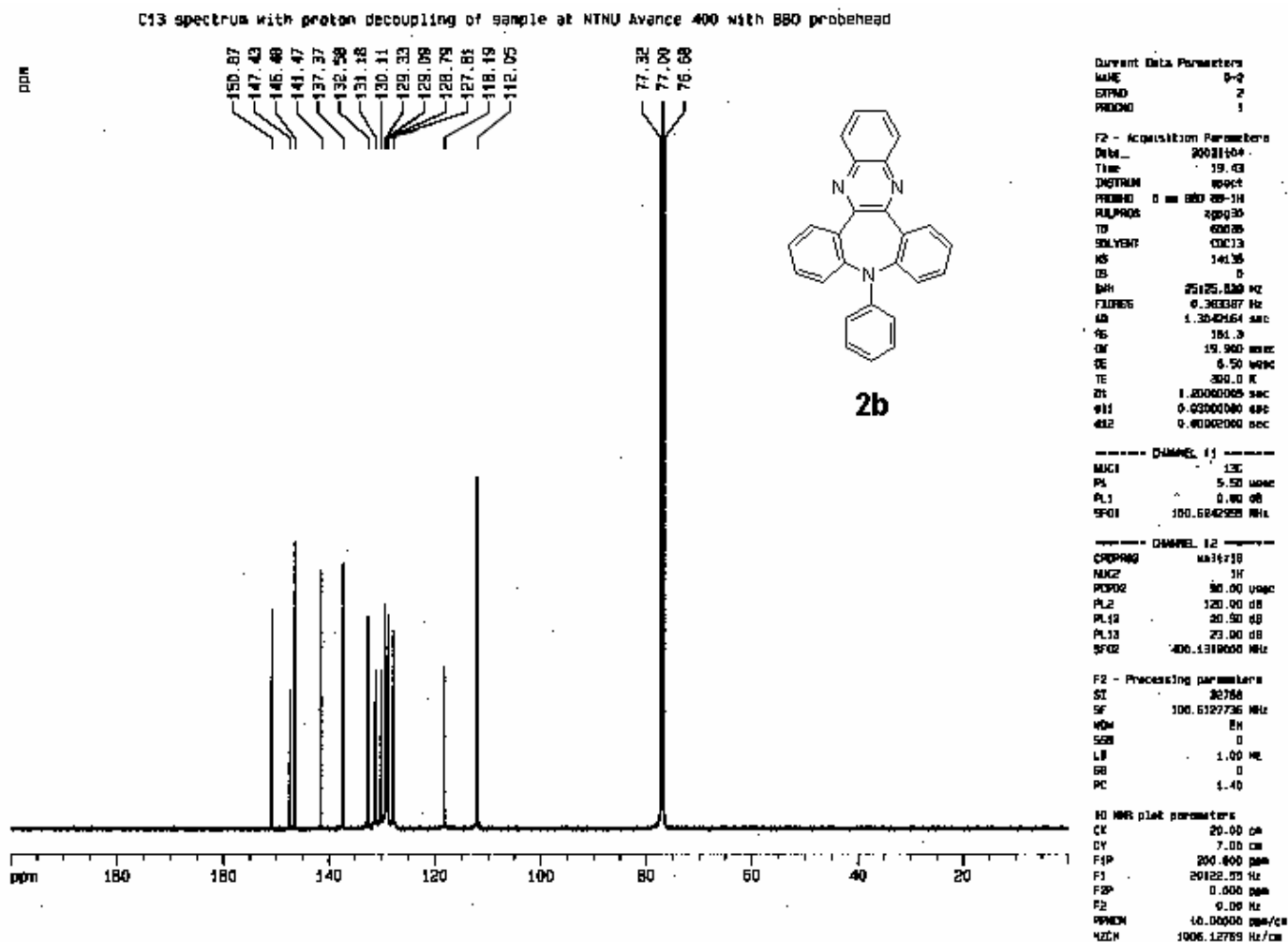
Current Data Parameters
 NAME 9-2
 EXPRM 3
 PROCNO 3

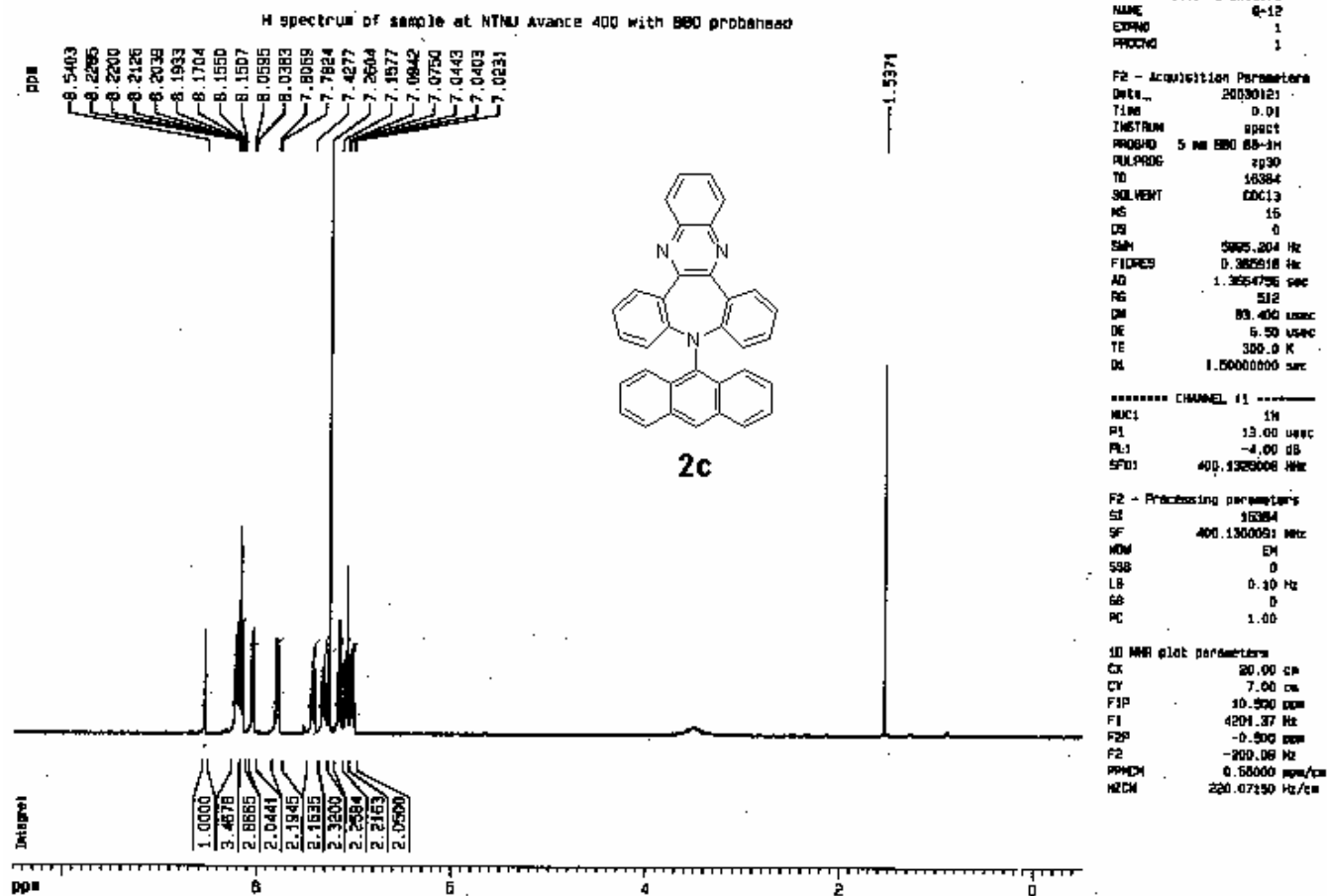
F2 - Acquisition Parameters
 Date_ 20021104
 Time 9.54
 INSTRUM spect
 PROBNM 9 == 060 09-1H
 PULPROG zg30
 TD 16384
 SOLVENT CDCl3
 NS 16
 DS 0
 SSBH 5295.204 Hz
 FIDRES 0.362918 Hz
 AQ 1.3684756 sec
 RG 812.7
 DW 83.490 usec
 DE 8.50 usec
 TE 300.0 K
 DA 1.90000000 sec

CHANNEL f1
 NUCL1 1H
 P1 7.10 usec
 PL1 0.00 dB
 SFO1 400.1326605 MHz

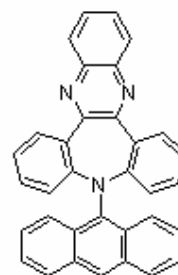
F2 - Processing parameters
 SI 16384
 SF 400.1300591 MHz
 MD 0
 SSB 0
 LB 0.10 Hz
 GB 0
 PC 1.00

1D NMR plot parameters
 CX 20.00 cm
 CY 6.00 cm
 F1P 10.500 ppm
 F1 4204.37 Hz
 F2P -0.500 ppm
 F2 -200.06 Hz
 PPMCH 0.56000 ppm/cm
 HZCH 228.07150 Hz/cm

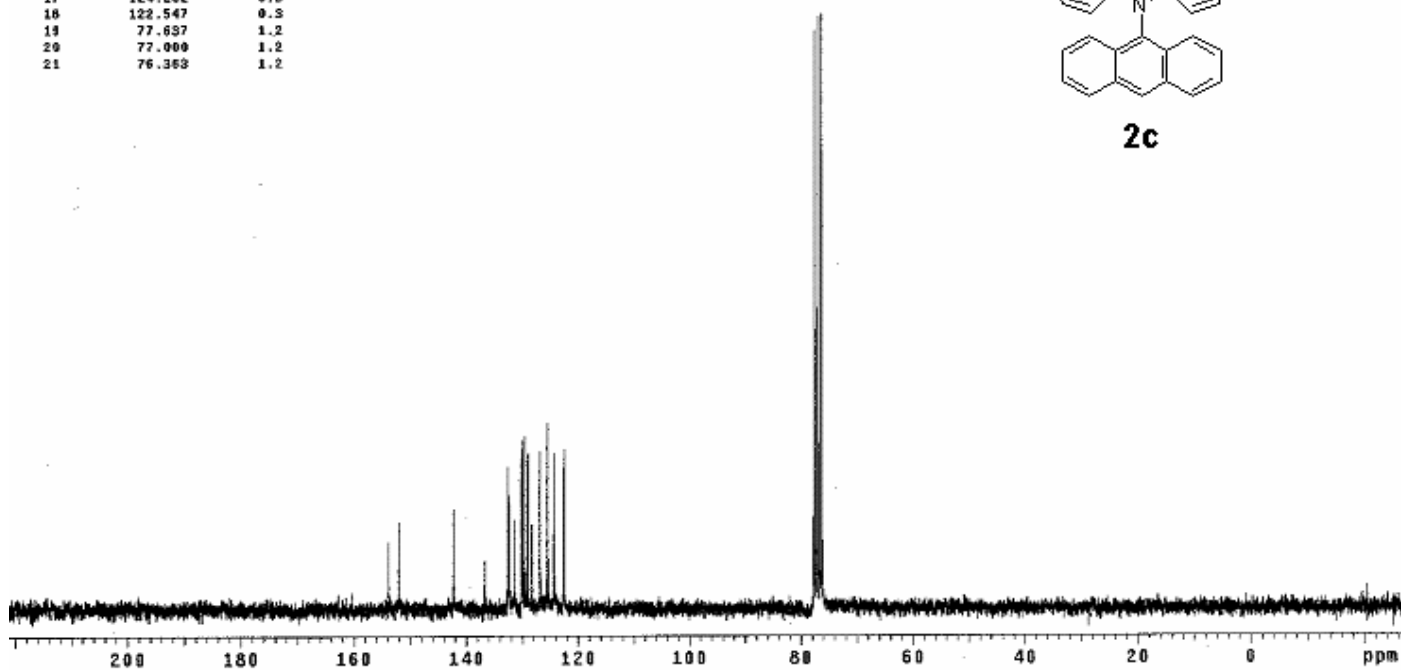


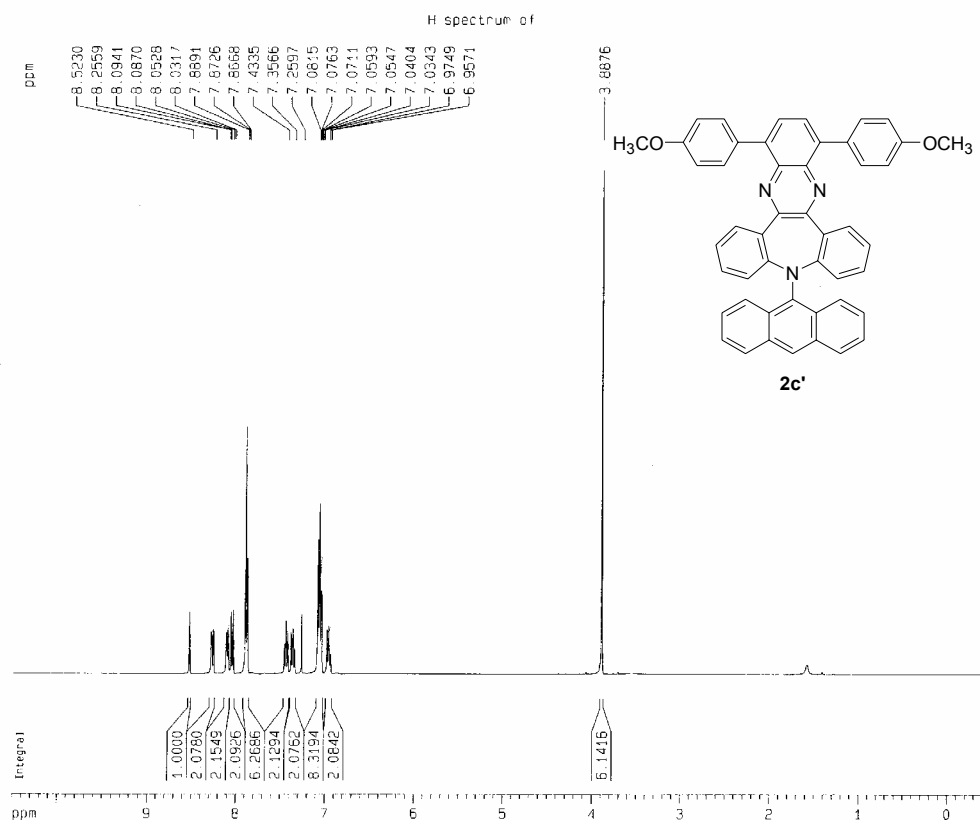


INDEX	FREQUENCY (PPM)	HEIGHT
1	153.786	0.1
2	151.988	0.2
3	142.225	0.2
4	136.687	0.1
5	132.581	0.3
6	132.376	0.2
7	132.302	0.2
8	131.347	0.2
9	130.042	0.3
10	129.920	0.3
11	128.496	0.4
12	128.848	0.3
13	128.206	0.2
14	128.840	0.3
15	125.520	0.3
16	125.469	0.4
17	124.282	0.3
18	122.547	0.3
19	77.637	1.2
20	77.000	1.2
21	76.363	1.2



2c





```

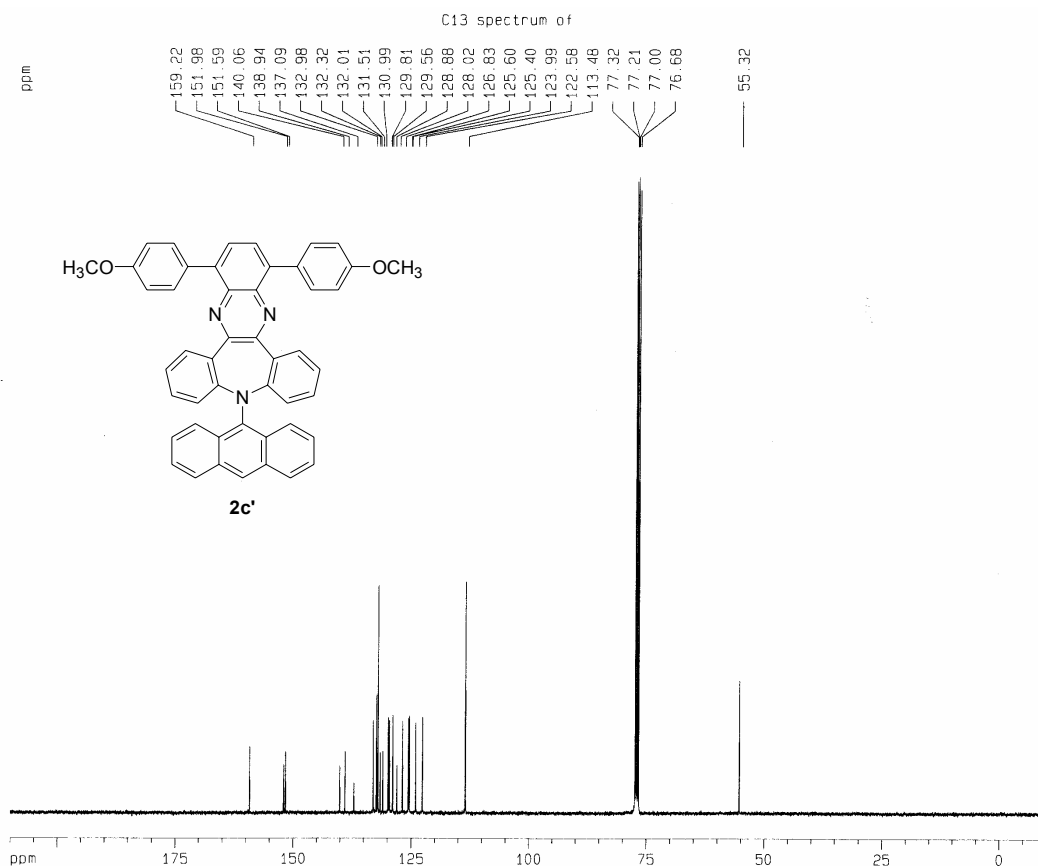
Current Data Parameters
NAME      OCH3-An-3
EXPNO    1
PROCNO   1

F2 - Acquisition Parameters
Date_    20050224
Time     19.00
INSTRUM spect
PROBHD   5 mm BBO BB-1H
PULPROG  zg30
TD        6536
SOLVENT  CDCl3
NS        16
DS        0
SWH       5995.204 Hz
FIDRES   0.365910 Hz
AQ        1.3664756 sec
RG         263.2
DW         83.400 usec
DE         6.50 usec
TE         300.0 K
D1         1.50000000 sec

===== CHANNEL f1 =====
NUC1      1H
P1        10.10 usec
PL1       3.00 dB
SF01     400.1326008 MHz

F2 - Processing parameters
SI        16384
SF        400.1300088 MHz
WDW       EM
SSB       0
LB        0.10 Hz
GB        0
PC        1.00

1D NMR plot parameters
CX        20.00 cm
CY        10.50 cm
T1P       10.500 ppm
F1        4201.37 Hz
F2P       -0.500 ppm
F2        -200.07 Hz
PRMCM     0.55000 ppm/cm
HZCM      220.07152 Hz/cm
    
```



```

Current Data Parameters
NAME      OCH3-An-3
EXPNO    2
PROCNO   1

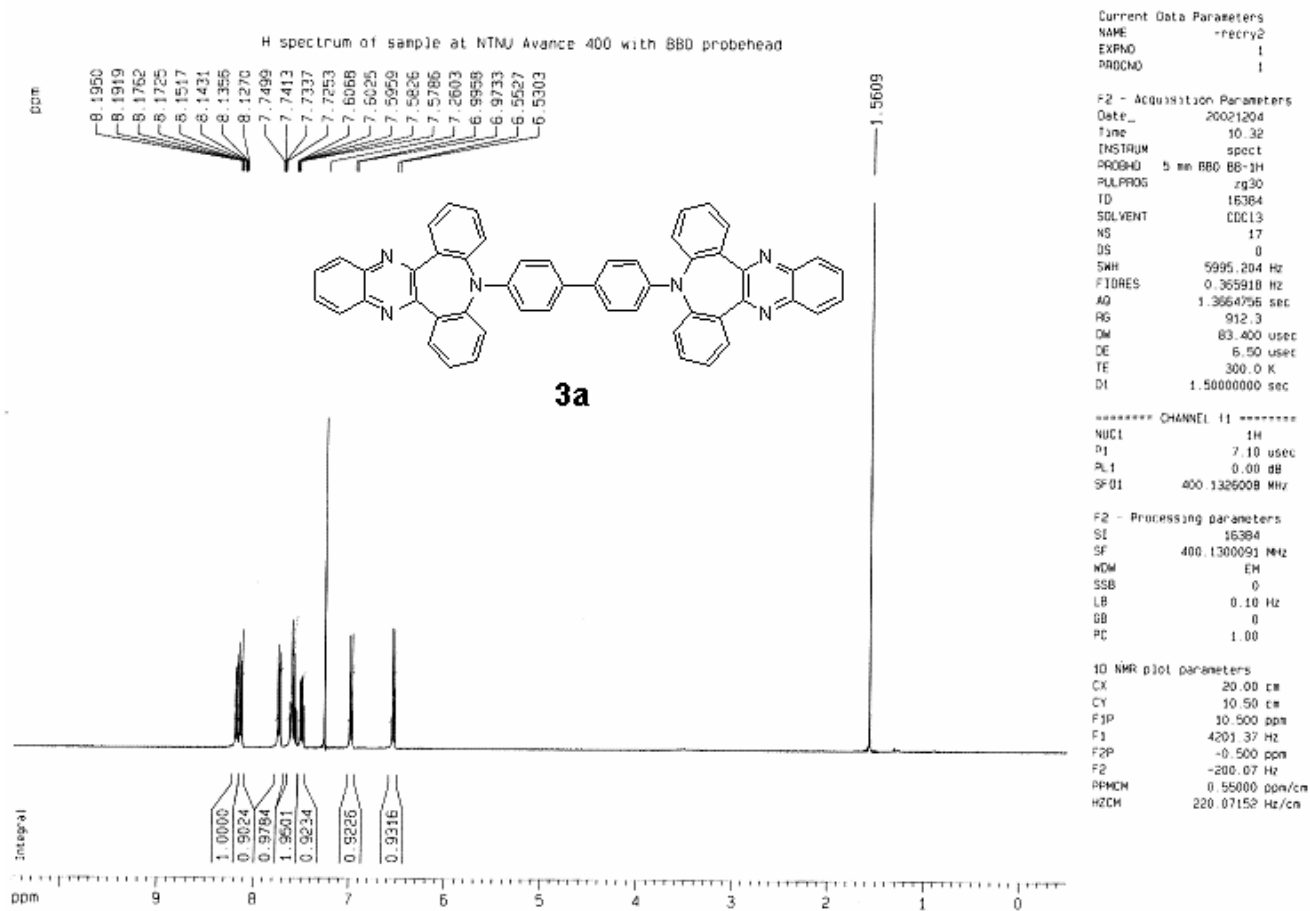
F2 - Acquisition Parameters
Date_    20050224
Time     19.02
INSTRUM spect
PROBHD   5 mm BBO BB-1H
PULPROG  zgpg30
TD        6536
SOLVENT  CDCl3
NS        3776
DS        0
SWH       25125.629 Hz
FIDRES   0.383387 Hz
AQ        1.3042164 sec
RG         8000
DW         19.900 usec
DE         6.50 usec
TE         300.0 K
D1         1.20000005 sec
d11       0.03000000 sec
d12       0.00002000 sec

===== CHANNEL f1 =====
NUC1      13C
P1        10.80 usec
PL1       7.00 dB
SF01     100.6242995 MHz

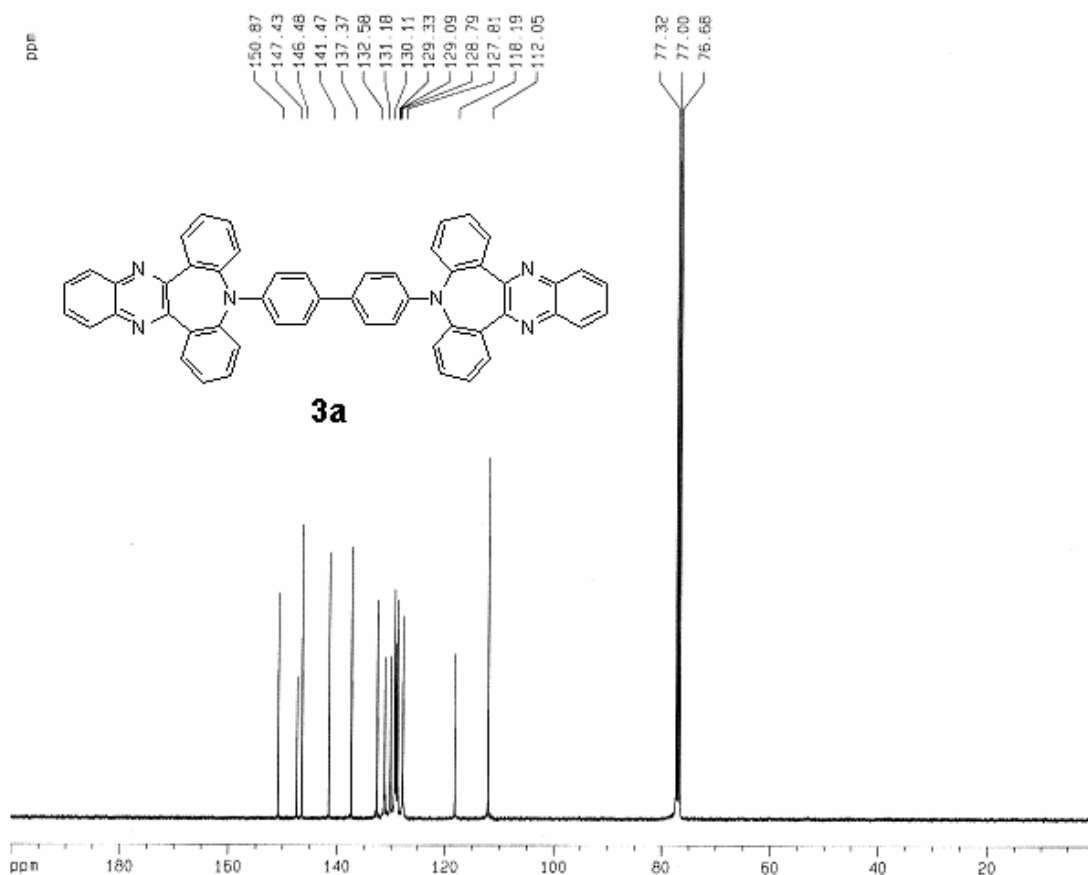
===== CHANNEL f2 =====
CPDPRG2  waltz16
NUC2      1H
PCPD2    90.00 usec
PL2      3.00 dB
PL12     21.83 dB
PL13     24.80 dB
SF02     400.1319000 MHz

F2 - Processing parameters
SI        32768
SF        100.6127721 MHz
WDW       EM
SSB       0
LB        1.00 Hz
GB        0
PC        1.40

1D NMR plot parameters
CX        20.00 cm
CY        12.50 cm
F1P       210.000 ppm
F1        21128.68 Hz
F2P       -10.000 ppm
F2        -1006.13 Hz
PRMCM     11.00000 ppm/cm
HZCM      1106.74048 Hz/cm
    
```



C13 spectrum with proton decoupling of sample at NTNU Avance 400 with BBO probehead



Current Data Parameters
 NAME 0-2
 EXPNO 2
 PROCNO 1

F2 - Acquisition Parameters
 Date_ 20021104
 Time 19.43
 INSTRUM spect
 PROBHD 5 mm BBO BB-1H
 PULPROG zgpg30
 TD 65536
 SOLVENT cdc13
 NS 14136
 DS 0
 SMH 25125.629 Hz
 FIDRES 0.383387 Hz
 AQ 1.3042164 sec
 RG 361.3
 CW 19.90 usec
 DE 6.50 usec
 FE 300.0 K
 D1 1.20000005 sec
 d11 0.03000000 sec
 d12 0.00000000 sec

***** CHANNEL f1 *****
 NUC1 13C
 P1 5.50 usec
 PL1 0.00 dB
 SFO1 100.6242995 MHz

***** CHANNEL f2 *****
 CPDPRG2 waltz16
 NUC2 1H
 PCPD2 90.00 usec
 PL2 120.00 dB
 PL12 20.50 dB
 PL13 23.00 dB
 SFO2 400.1319000 MHz

F2 - Processing parameters
 SI 32768
 SF 100.6127736 MHz
 WMW LM
 SSB 0
 LB 1.00 Hz
 GB 0
 PC 1.40

ID NMR plot parameters
 CX 20.00 cm
 CY 7.00 cm
 F1P 200.000 ppm
 F1 20122.55 Hz
 F2P 0.000 ppm
 F2 0.00 Hz
 PRNCH 10.00000 mm/cm

