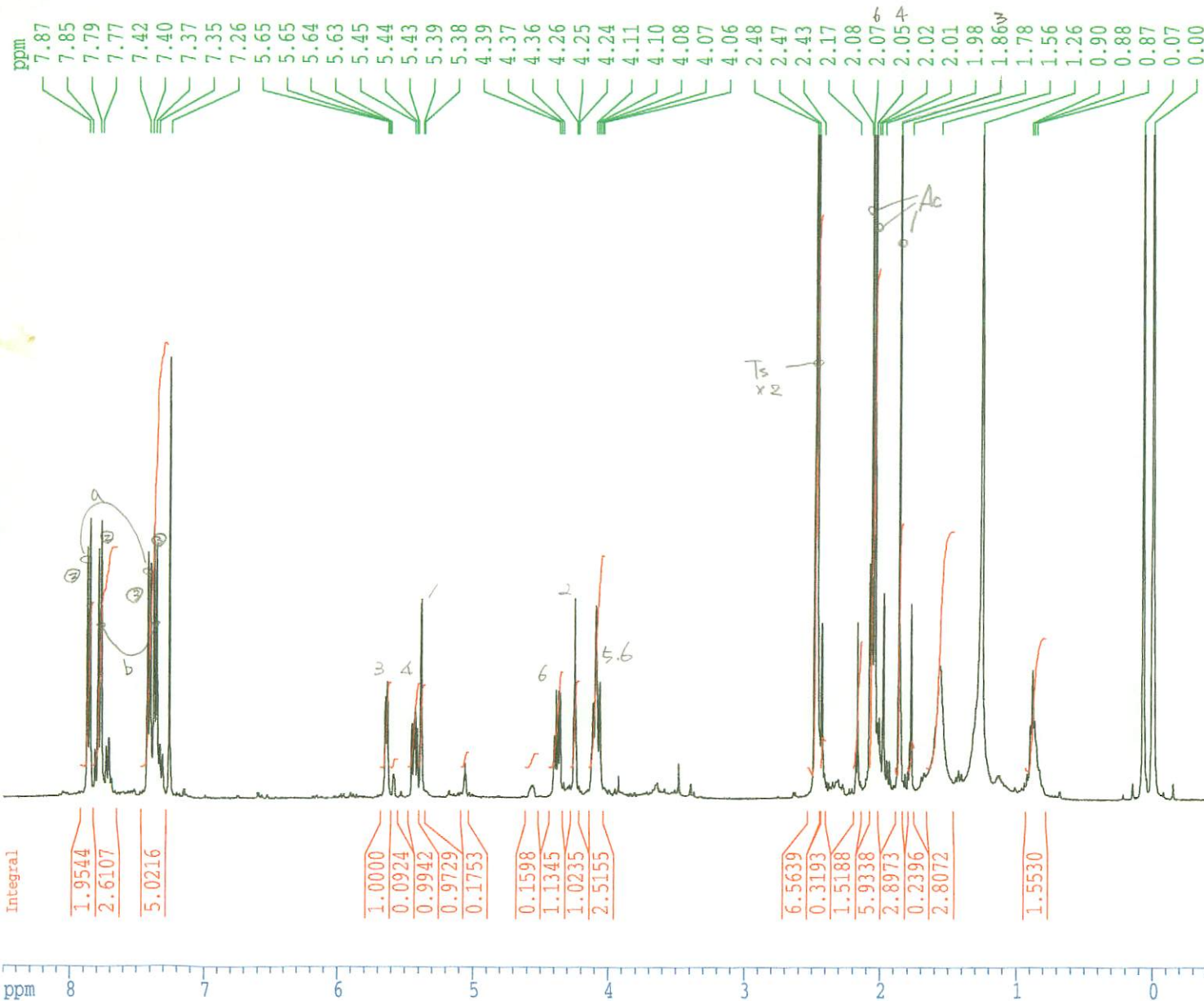
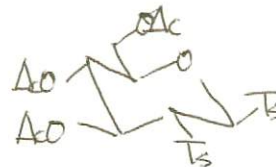


01/04/14 Acetylation(BF3.Et2O) of Di-TsType CDC13 1H



Current Data Parameters
 NAME TomoS
 EXPNO 1
 PROCNO 1

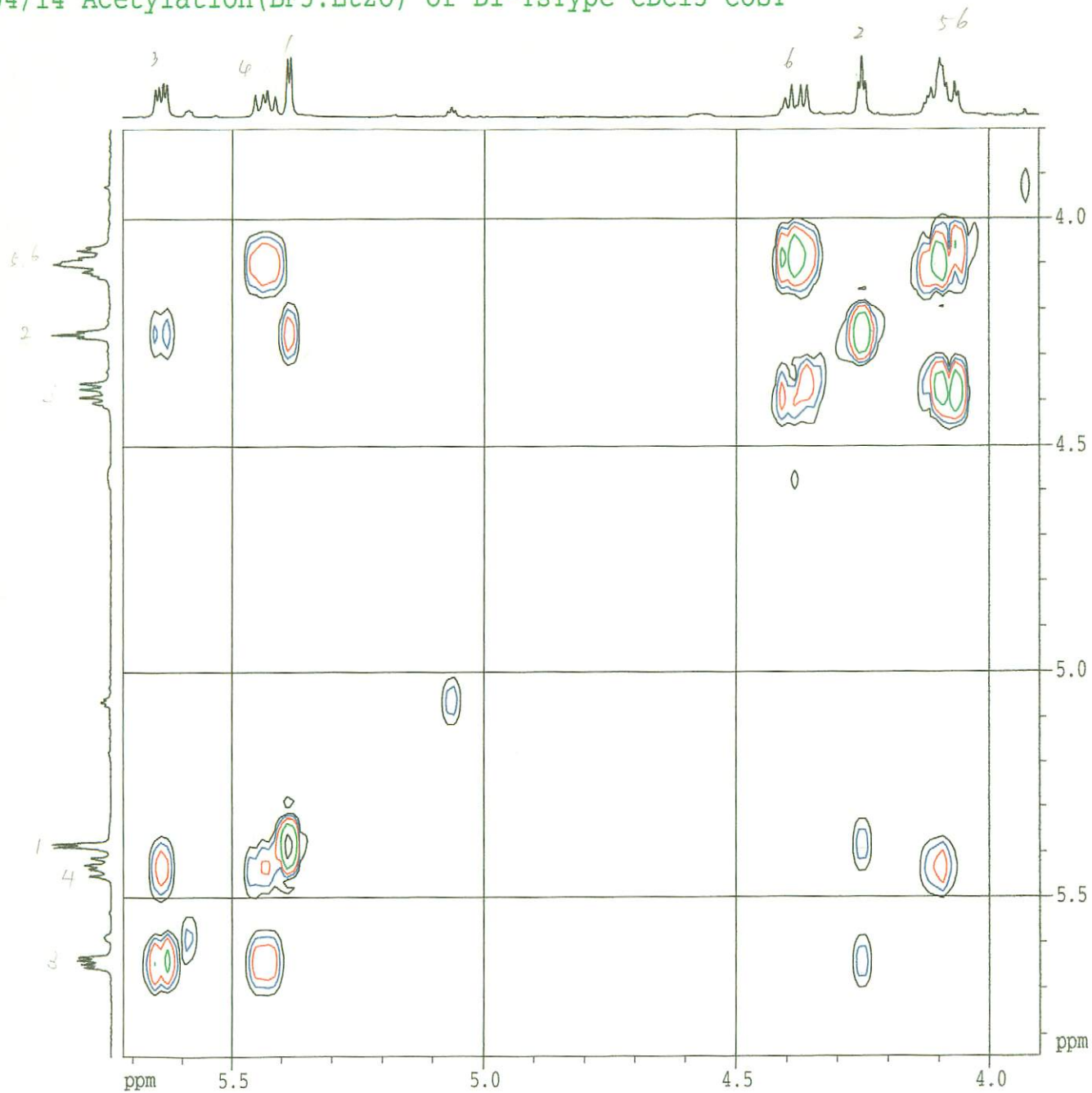
F2 - Acquisition Parameters
 Date_ 20010414
 Time 14.29
 INSTRUM dpx400
 PROBHD 5 mm QNP 1H/
 PULPROG zg
 TD 32768
 SOLVENT CDCl3
 NS 200
 DS 4
 SWH 5208.333 Hz
 FIDRES 0.158946 Hz
 AQ 3.1457779 sec
 RG 181
 DW 96.000 usec
 DE 6.00 usec
 TE 300.0 K
 D1 1.00000000 sec

===== CHANNEL f1 =====
 NUC1 1H
 P1 13.00 usec
 PL1 -3.00 dB
 SFO1 400.1322007 MHz

F2 - Processing parameters
 SI 32768
 SF 400.1300092 MHz
 WDW EM
 SSB 0
 LB 0.20 Hz
 GB 0
 PC 1.00

1D NMR plot parameters
 CX 20.00 cm
 F1P 8.500 ppm
 F1 3401.10 Hz
 F2P -0.500 ppm
 F2 -200.07 Hz
 PPMCM 0.45000 ppm/cm
 HZCM 180.05850 Hz/cm

1/04/14 Acetylation(BF3.Et2O) of Di-TsType CDCl3 COSY



```
Current Data Parameters
NAME      Tomo3
EXPNO    2
PROCNO   1

F2 - Acquisition Parameters
Date_    20010414
Time     14.42
INSTRUM  dpx400
PROBHD   5 mm QNP 1H/
PULPROG  cosygs
TD       2048
SOLVENT  DMSO
NS       24
DS       8
SMH      5208.333 Hz
FIDRES   2.543132 Hz
AQ       0.1966580 sec
RG       1024
DW       96.000 usec
DE       6.00 usec
TE       300.0 K
DQ       0.00003300 sec
D1       1.00000000 sec
D13      0.00003300 sec
D16      0.00010000 sec
IN0      0.00019200 sec

===== CHANNEL f1 =====
NUC1     1H
PQ       10.50 usec
P1       13.00 usec
PL1      -3.00 dB
SFO1     400.1322007 MHz

===== GRADIENT CHANNEL =====
P16      1000.00 usec

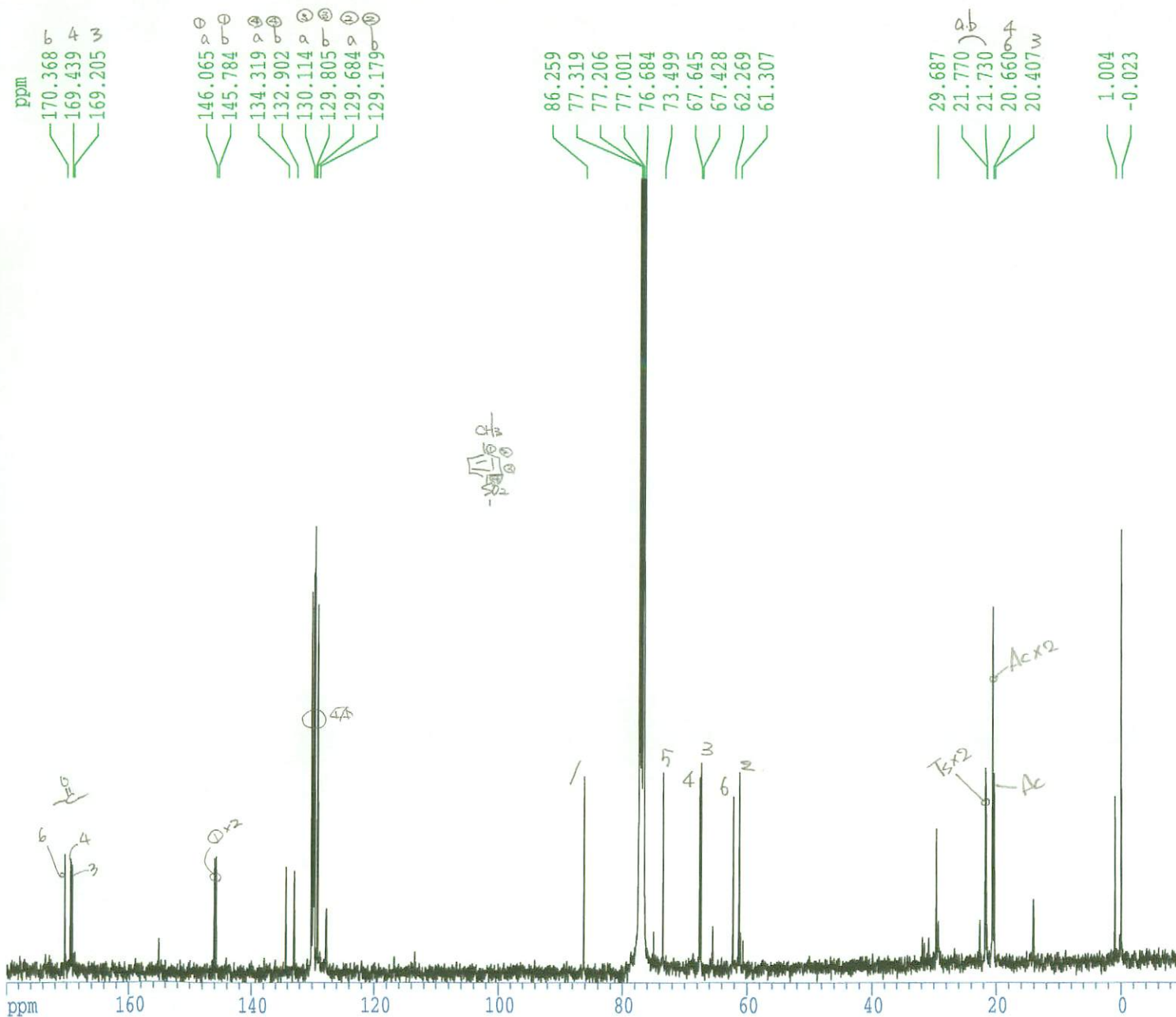
F1 - Acquisition parameters
ND0      1
TD       256
SFO1     400.1322 MHz
FIDRES   20.345053 Hz
SW       13.017 ppm

F2 - Processing parameters
SI       1024
SF       400.1300090 MHz
WDW      SINE
SSB      0
LB       0.00 Hz
GB       0
PC       1.00

F1 - Processing parameters
SI       1024
MC2      OF
SF       400.1300090 MHz
WDW      SINE
SSB      0
LB       0.00 Hz
GB       0

2D NMR plot parameters
CX2      15.00 cm
CX1      15.00 cm
F2PLO    5.719 ppm
F2LO     2288.33 Hz
F2PHI    3.901 ppm
F2HI     1561.00 Hz
F1PLO    5.846 ppm
F1LO     2339.19 Hz
F1PHI    3.800 ppm
F1HI     1520.30 Hz
F2PFCM   0.12118 ppm/cm
F2HCM    48.48904 Hz/cm
F1PFCM   0.13644 ppm/cm
F1HCM    54.59256 Hz/cm
```

01/04/14 Acetylation(BF3.Et2O) of Di-TsType CDC13 13C



Current Data Parameters
 NAME TomoS
 EXPNO 7
 PROCNO 1

F2 - Acquisition Parameters
 Date_ 20010416
 Time 9.34
 INSTRUM dpx400
 PROBHD 5 mm QNP 1H/
 PULPROG zgpg30
 TD 65536
 SOLVENT CDC13
 NS 20000
 DS 4
 SWH 26178.010 Hz
 FIDRES 0.399445 Hz
 AQ 1.2517875 sec
 RG 4597.6
 DW 19.100 usec
 DE 6.00 usec
 TE 300.0 K
 D1 1.50000000 sec
 D11 0.03000000 sec
 D12 0.00002000 sec

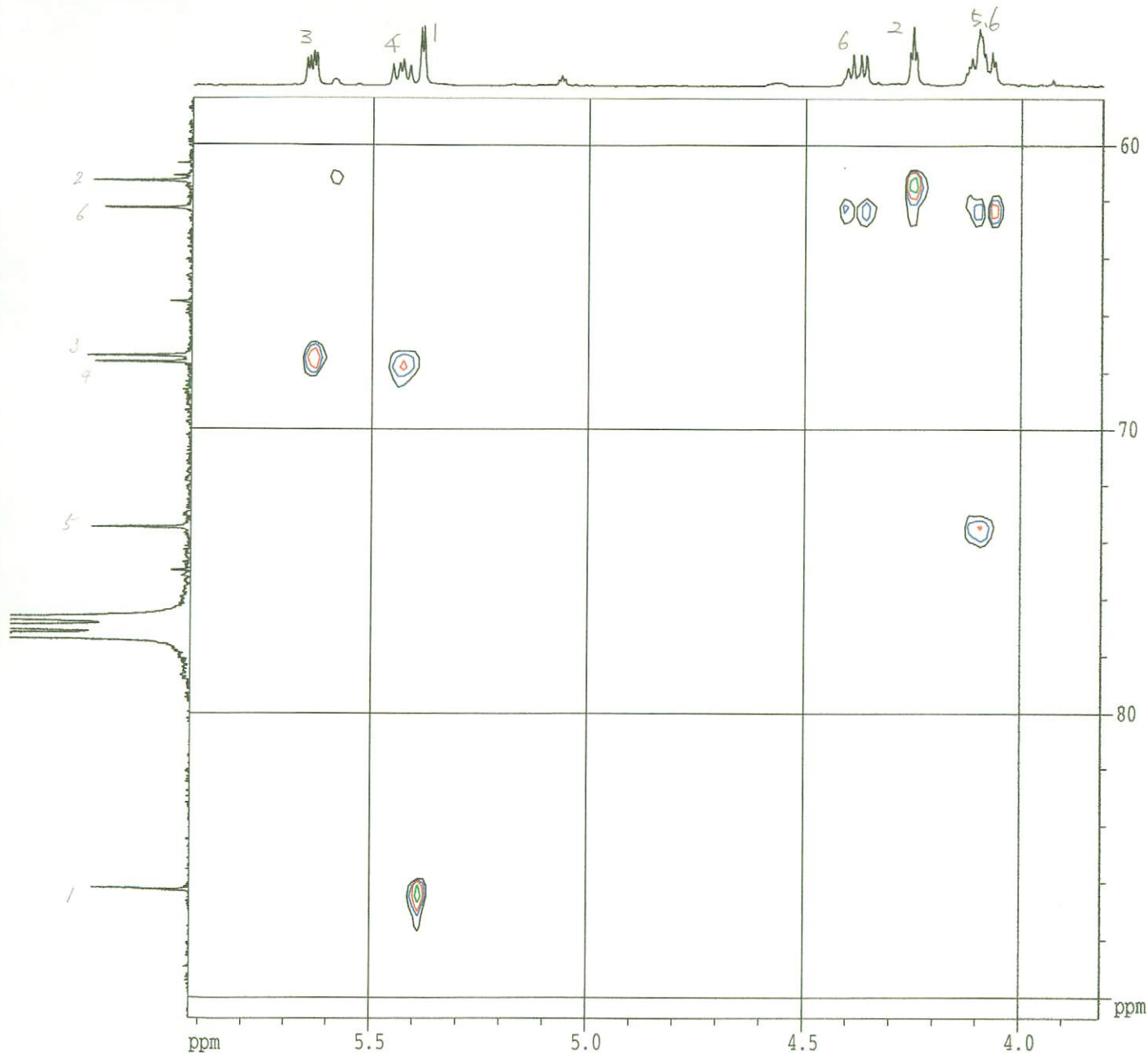
===== CHANNEL f1 =====
 NUC1 13C
 P1 9.00 usec
 PL1 -2.00 dB
 SFO1 100.6237964 MHz

===== CHANNEL f2 =====
 CPDPRG2 waltz16
 NUC2 1H
 PCPD2 100.00 usec
 PL2 120.00 dB
 PL12 17.00 dB
 PL13 17.00 dB
 SFO2 400.1316005 MHz

F2 - Processing parameters
 SI 65536
 SF 100.6127690 MHz
 WDW EM
 SSB 0
 LB 2.00 Hz
 GB 0
 PC 1.40

1D NMR plot parameters
 CX 20.00 cm
 F1P 180.000 ppm
 F1 18110.30 Hz
 F2P -10.000 ppm
 F2 -1006.13 Hz
 PPMCM 9.50000 ppm/cm
 HZCM 955.82129 Hz/cm

01/04/14 Acetylation(BF3.Et2O) of Di-TsType CDCl3 HMQC



```
Current Data Parameters
NAME      TomcoS
EXPNO    3
PROCNO   1

F2 - Acquisition Parameters
Date_    20010414
Time     16.49
INSTRUM  dpx400
PROBHD   5 mm QNP 1H/
PULPROG  inv4gptp
TD       2048
SOLVENT  DMSO
NS       24
DS       16
SMH      5708.313 Hz
FIDRES   2.541132 Hz
AQ       0.1966580 sec
RG       16384
DM       96.000 usec
DE       6.00 usec
TE       300.0 K
D0       0.00800000 sec
D1       2.00000000 sec
D2       0.00345000 sec
d4       0.00172500 sec
D11      0.03000000 sec
D13      0.00000000 sec
D16      0.00010000 sec
d20      0.00062500 sec
d21      0.00234000 sec
INO      0.00001380 sec

===== CHANNEL f1 =====
NUC1     1H
P1       13.00 usec
P2       26.00 usec
PL1      -3.00 dB
SFO1     400.1322007 MHz

===== CHANNEL f2 =====
CPOPRG2  waltz16
NUC2     13C
P3       8.80 usec
P4       26.00 usec
PCPD2    70.00 usec
PL2      -2.00 dB
PL12     15.70 dB
SFO2     100.6197719 MHz

===== GRADIENT CHANNEL =====
P16      1000.00 usec

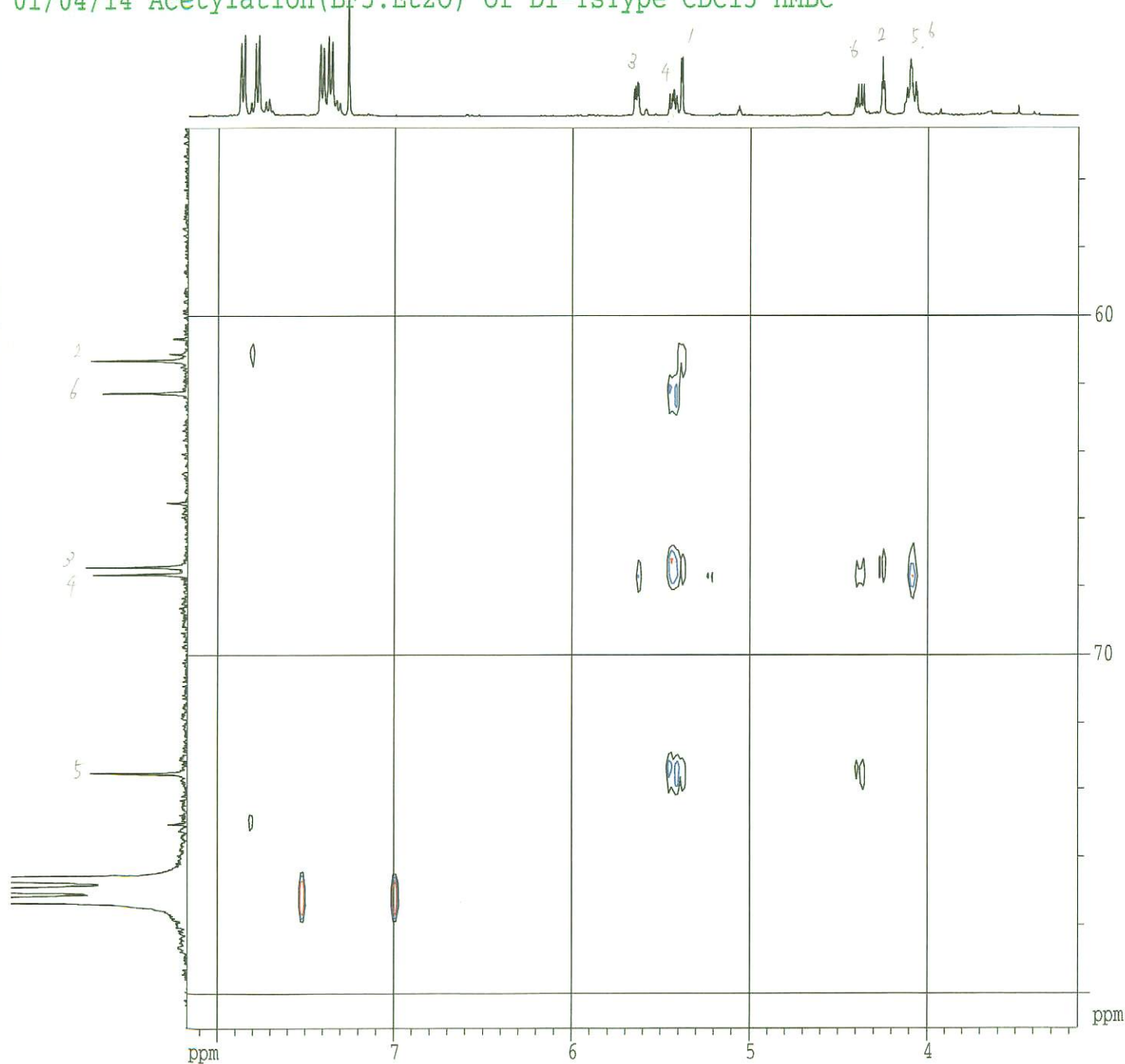
F1 - Acquisition parameters
ND0      4
TD       512
SFO1     100.6198 MHz
FIDRES   35.382698 Hz
SN       180.044 ppm

F2 - Processing parameters
SI       1024
SF       400.1300090 MHz
WDW      QSDWE
SSB      2
LB       0.00 Hz
GB       0
PC       1.40

F1 - Processing parameters
SI       512
MC2      TPP1
SF       100.6127690 MHz
WDW      QSDWE
SSB      2
LB       0.00 Hz
GB       0

2D NMR plot parameters
CX2      15.00 cm
CX1      15.00 cm
F2PLO    5.922 ppm
F2F0     2369.71 Hz
F2FH1    3.812 ppm
F2FH1     1525.39 Hz
F1PLO    90.703 ppm
F1F0     9125.88 Hz
F1FH1    58.349 ppm
F1FH1     5870.67 Hz
F2FPMCH  0.14067 ppm/cm
F2FHCH   56.28798 Hz/cm
F1FPMCH  2.15682 ppm/cm
F1FHCH   217.01389 Hz/cm
```

01/04/14 Acetylation(BF₃.Et₂O) of Di-TsType CDCl₃ HMBC



Current Data Parameters

NAME	TomoS
EXPNO	4
PROCNO	1

F2 - Acquisition Parameters

Date_	20010415
Time	0.24
INSTRUM	cpX400
PROBHD	5 mm QNP 1H/
PULPROG	inv4gs12ind
TD	2048
SOLVENT	DMSO
NS	24
DS	16
SWH	5208.333 Hz
FIDRES	2.543132 Hz
AQ	0.1966580 sec
RG	16384
DW	96.000 usec
DE	6.00 usec
TE	300.0 K
DO	0.00000300 sec
D1	2.00000000 sec
D2	0.00345000 sec
D6	0.06500000 sec
D13	0.00000300 sec
D16	0.00010000 sec
TD0	0.00001900 sec

----- CHANNEL f1 -----

NUC1	1H
P1	13.00 usec
P2	26.00 usec
PL1	-3.00 dB
SFO1	400.1322007 MHz

----- CHANNEL f2 -----

NUC2	13C
P3	8.80 usec
PL2	-2.00 dB
SFO2	100.6237964 MHz

----- GRADIENT CHANNEL -----

P16	1000.00 usec
-----	--------------

F1 - Acquisition parameters

ND0	2
TD	512
SFO1	100.6238 MHz
FIDRES	51.398026 Hz
SW	261.527 ppm

F2 - Processing parameters

SI	1024
SP	400.1300090 MHz
WDW	SINE
SSB	0
LB	0.00 Hz
GB	0
RC	1.40

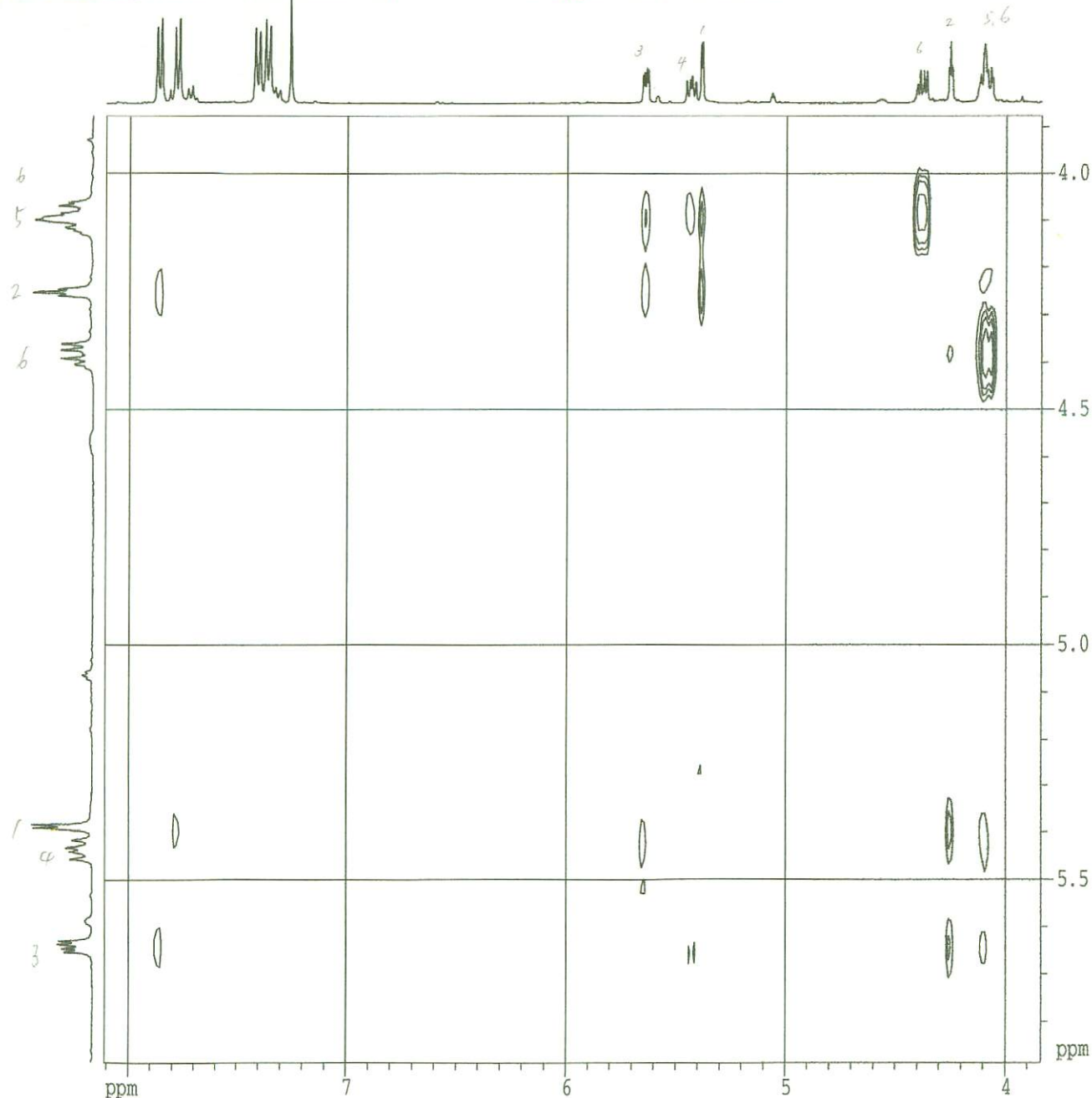
F1 - Processing parameters

SI	512
MC2	QF
SP	100.6127690 MHz
WDW	SINE
SSB	0
LB	0.00 Hz
GB	0

2D NMR plot parameters

CK2	15.00 cm
CK1	15.00 cm
F2PLO	8.172 ppm
F2L0	3269.98 Hz
F2PHI	3.151 ppm
F2HI	1260.91 Hz
F1PLO	80.995 ppm
F1L0	8149.13 Hz
F1PHI	54.431 ppm
F1HI	5476.44 Hz
F2FMCM	0.33474 ppm/cm
F2H2CM	133.93826 Hz/cm
F1FMCM	1.77095 ppm/cm
F1H2CM	178.17984 Hz/cm

01/04/14 Acetylation(BF₃.Et₂O) of Di-TsType CDC13 NOESY



Current Data Parameters
 NAME TomoS
 EXPNO 5
 PROCNO 1

F2 - Acquisition Parameters
 Date_ 20010415
 Time 8.12
 INSTRUM dpx400
 PROBHD 5 mm QNP 1H/
 PULPROG noesytp
 TD 2048
 SOLVENT DMSO
 NS 24
 DS 8
 SWH 5208.333 Hz
 FIDRES 2.543132 Hz
 AQ 0.1966580 sec
 RG 406.4
 DW 96.000 usec
 DE 6.00 usec
 TE 300.0 K
 D0 0.00000300 sec
 D1 1.00000000 sec
 D8 1.00000000 sec
 IN0 0.00009600 sec

===== CHANNEL f1 =====
 NUC1 1H
 P1 13.00 usec
 PL1 -3.00 dB
 SFO1 400.1322007 MHz

F1 - Acquisition parameters
 ND0 2
 TD 256
 SFO1 400.1322 MHz
 FIDRES 20.345053 Hz
 SW 13.017 ppm

F2 - Processing parameters
 SI 1024
 SF 400.1300090 MHz
 WDW QSINE
 SSB 2
 LB 0.00 Hz
 GB 0
 PC 1.40

F1 - Processing parameters
 SI 512
 MC2 TPPI
 SF 400.1300090 MHz
 WDW QSINE
 SSB 2
 LB 0.00 Hz
 GB 0

2D NMR plot parameters
 CX2 15.00 cm
 CX1 15.00 cm
 F2PLO 8.109 ppm
 F2LO 3244.55 Hz
 F2PHI 3.838 ppm
 F2HI 1535.56 Hz
 F1PLO 5.884 ppm
 F1LO 2354.45 Hz
 F1PHI 3.876 ppm
 F1HI 1550.82 Hz
 F2PPMCM 0.28474 ppm/cm
 F2HZCM 113.93230 Hz/cm
 F1PPMCM 0.13389 ppm/cm
 F1HZCM 53.57531 Hz/cm