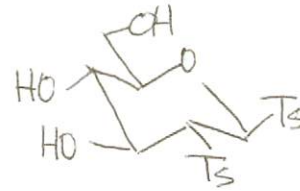
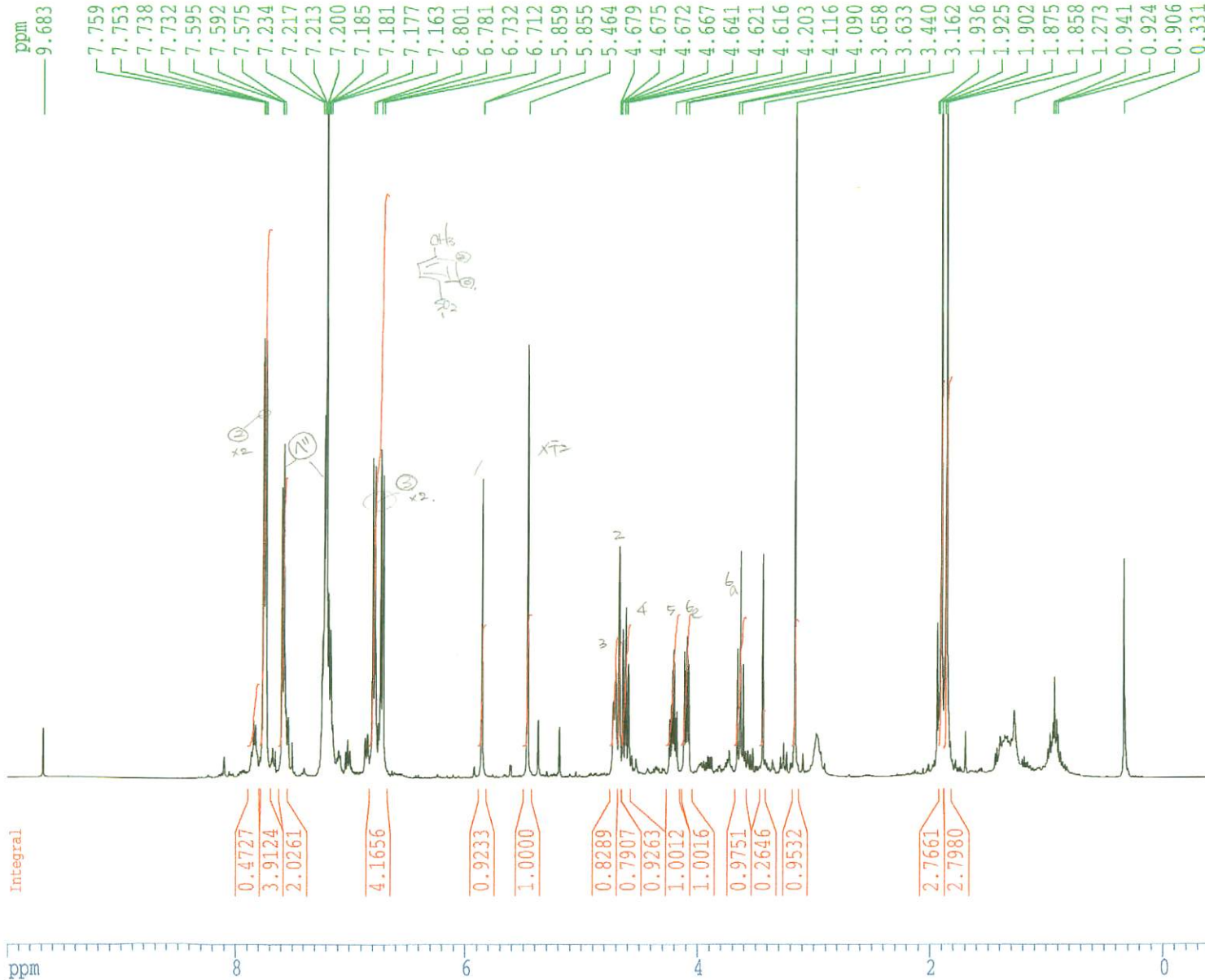


01/05/01 Benzylidenation(CH₃CN) of DiTsType C6D6 1H



PhCH(OMe)₂
 in CH₃CN



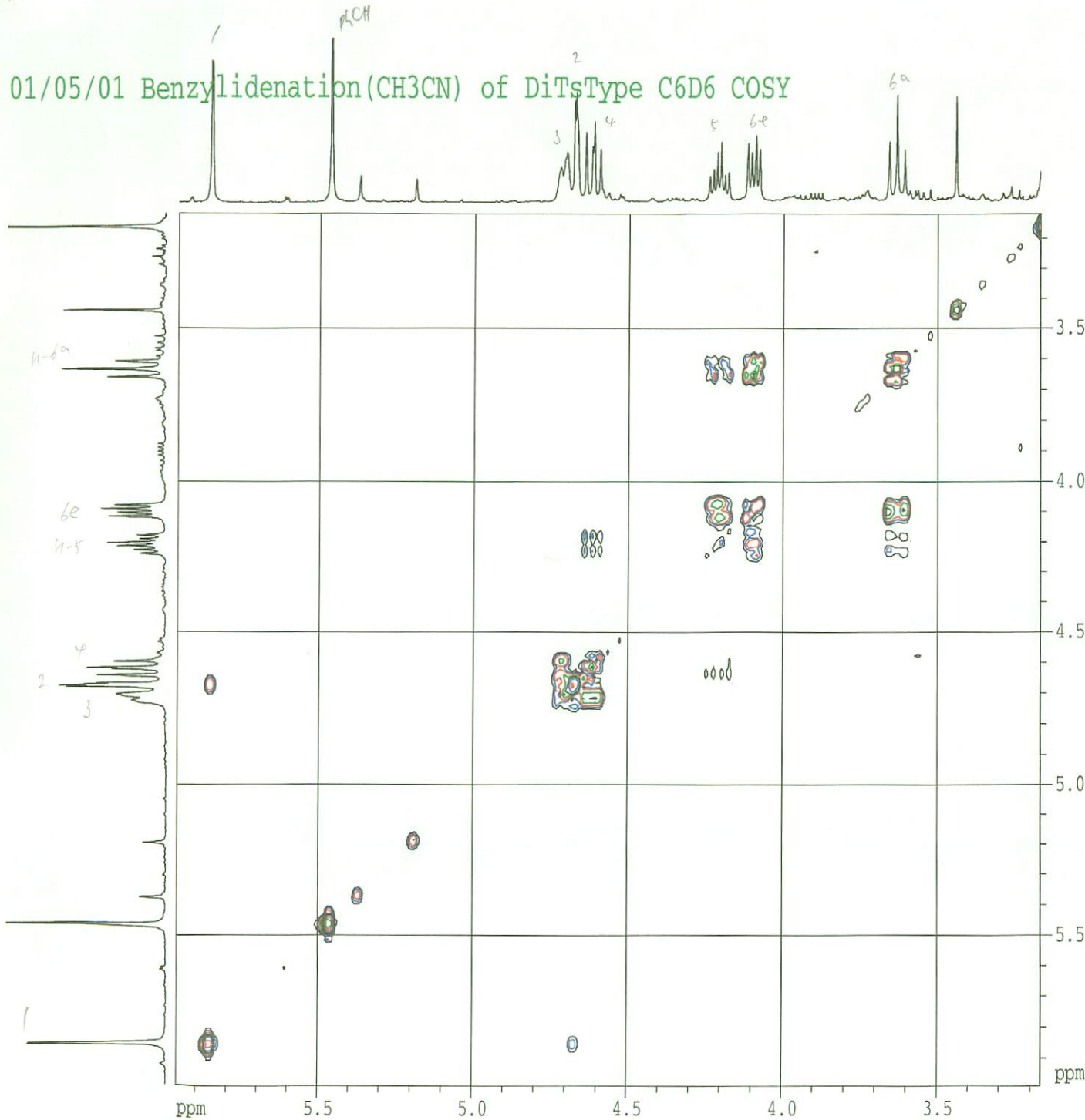
Current Data Parameters
 NAME TomoS
 EXPNO 10
 PROCNO 1

F2 - Acquisition Parameters
 Date_ 20010501
 Time 16.06
 INSTRUM dpx400
 PROBHD 5 mm QNP 1H/
 PULPROG zg
 TD 32768
 SOLVENT CDCl₃
 NS 250
 DS 4
 SWH 5208.333 Hz
 FIDRES 0.158946 Hz
 AQ 3.1457779 sec
 RG 64
 DW 96.000 usec
 DE 6.00 usec
 TE 300.0 K
 DL 1.00000000 sec

===== CHANNEL f1 =====
 NUC1 1H
 P1 12.50 usec
 PL1 -3.00 dB
 SF01 400.1322007 MHz

F2 - Processing parameters
 SI 32768
 SF 400.1300279 MHz
 WDW EM
 SSB 0
 LB 0.20 Hz
 GB 0
 PC 1.00

1D NMR plot parameters
 CX 20.00 cm
 F1P 10.000 ppm
 F1 4001.30 Hz
 F2P -0.500 ppm
 F2 -200.07 Hz
 PPMCM 0.52500 ppm/cm
 HZCM 210.06827 Hz/cm



Current Data Parameters
 NAME TomoS
 EXPNO 11
 PROCNO 1

F2 - Acquisition Parameters
 Date_ 20010501
 Time 16.10
 INSTRUM gpc400
 PROBHD 5 mm CNP 1H/
 PULPROG cosyys
 TD 2048
 SOLVENT DMSO
 NS 16
 DS 8
 SWH 5208.333 Hz
 FIDRES 2.543132 Hz
 AQ 0.1966580 sec
 RG 362
 LW 96.000 usec
 DE 6.00 usec
 TE 300.0 K
 D0 0.0000300 sec
 D1 1.0000000 sec
 D13 0.0000300 sec
 D16 0.0001000 sec
 IN0 0.00019200 sec

===== CHANNEL f1 =====
 NUC1 1H
 P0 10.50 usec
 P1 12.50 usec
 PL1 -3.00 dB
 SF01 400.1322007 MHz

===== GRADIENT CHANNEL =====
 F16 1000.00 usec

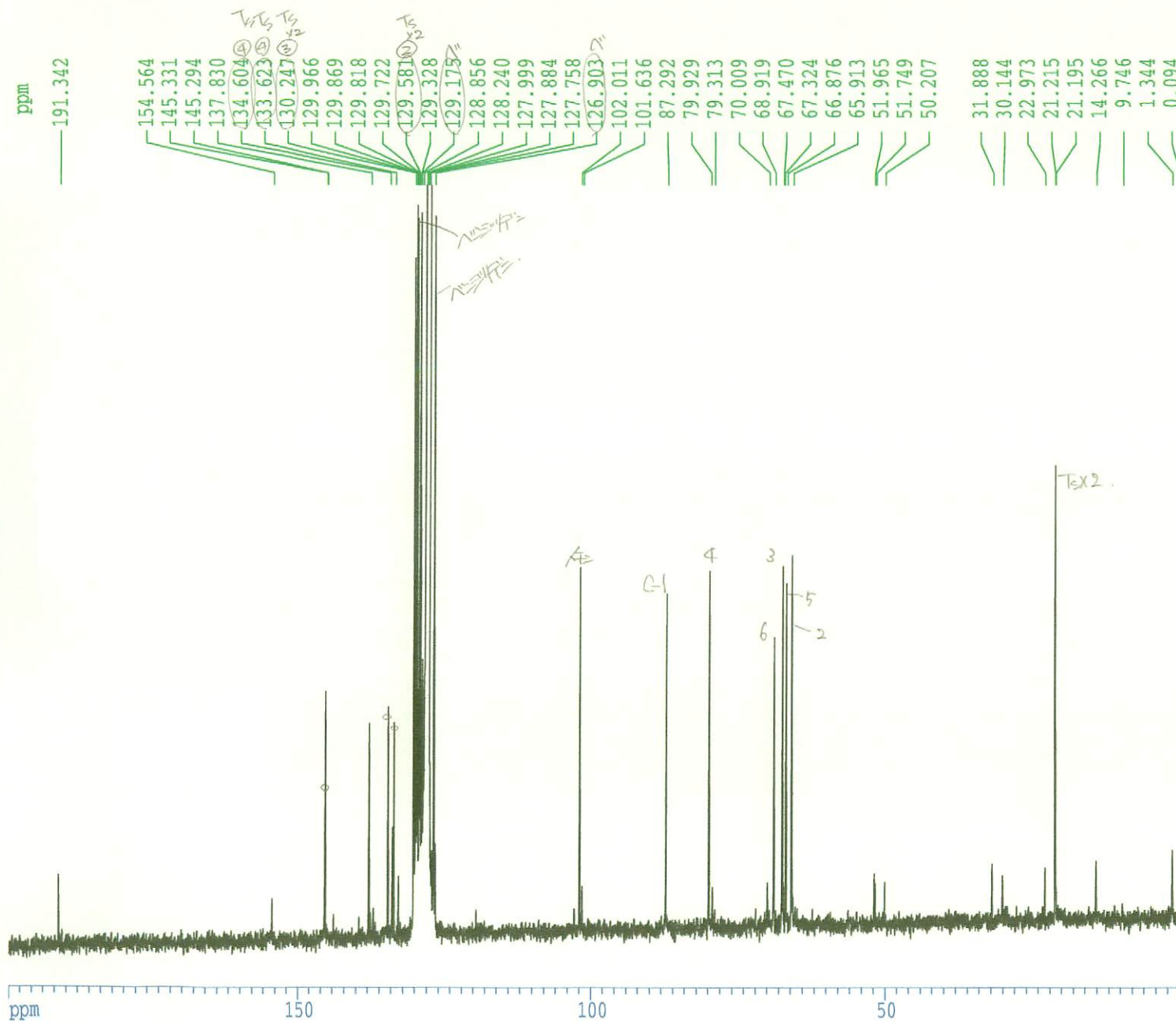
F1 - Acquisition parameters
 MD0 1
 TD 512
 SF01 400.1322 MHz
 FIDRES 10.172526 Hz
 SW 13.017 ppm

F2 - Processing parameters
 SI 1024
 SF 400.1300279 MHz
 WDW SINE
 SSB 0
 LB 0.00 Hz
 GB 0
 PC 1.00

F1 - Processing parameters
 SI 1024
 MC2 QF
 SF 400.1300279 MHz
 WDW SINE
 SSB 0
 LB 0.00 Hz
 GB 0

2D NMR plot parameters
 CX2 15.00 cm
 CX1 15.00 cm
 F2PLO 5.964 ppm
 F2LO 2386.44 Hz
 F2PHI 3.168 ppm
 F2HI 1267.47 Hz
 F1PLO 5.990 ppm
 F1LO 2396.62 Hz
 F1PHI 3.117 ppm
 F1HI 1247.12 Hz
 F2FPMCM 0.18644 ppm/cm
 F2HZCM 74.59853 Hz/cm
 F1FPMCM 0.19152 ppm/cm
 F1HZCM 76.63303 Hz/cm

01/05/01 Benzylidenation(CH3CN) of DiTsType C6D6 13C



Current Data Parameters
 NAME TomoS
 EXPNO 16
 PROCNO 1

F2 - Acquisition Parameters
 Date_ 20010502
 Time 9.44
 INSTRUM dpx400
 PROBHD 5 mm QNP 1H/
 PULPROG zgpg30
 TD 65536
 SOLVENT CDCl3
 NS 3842
 DS 4
 SWH 26178.010 Hz
 FIDRES 0.399445 Hz
 AQ 1.2517875 sec
 RG 2298.8
 DW 19.100 usec
 DE 6.00 usec
 TE 300.0 K
 D1 1.50000000 sec
 D11 0.03000000 sec
 D12 0.00002000 sec

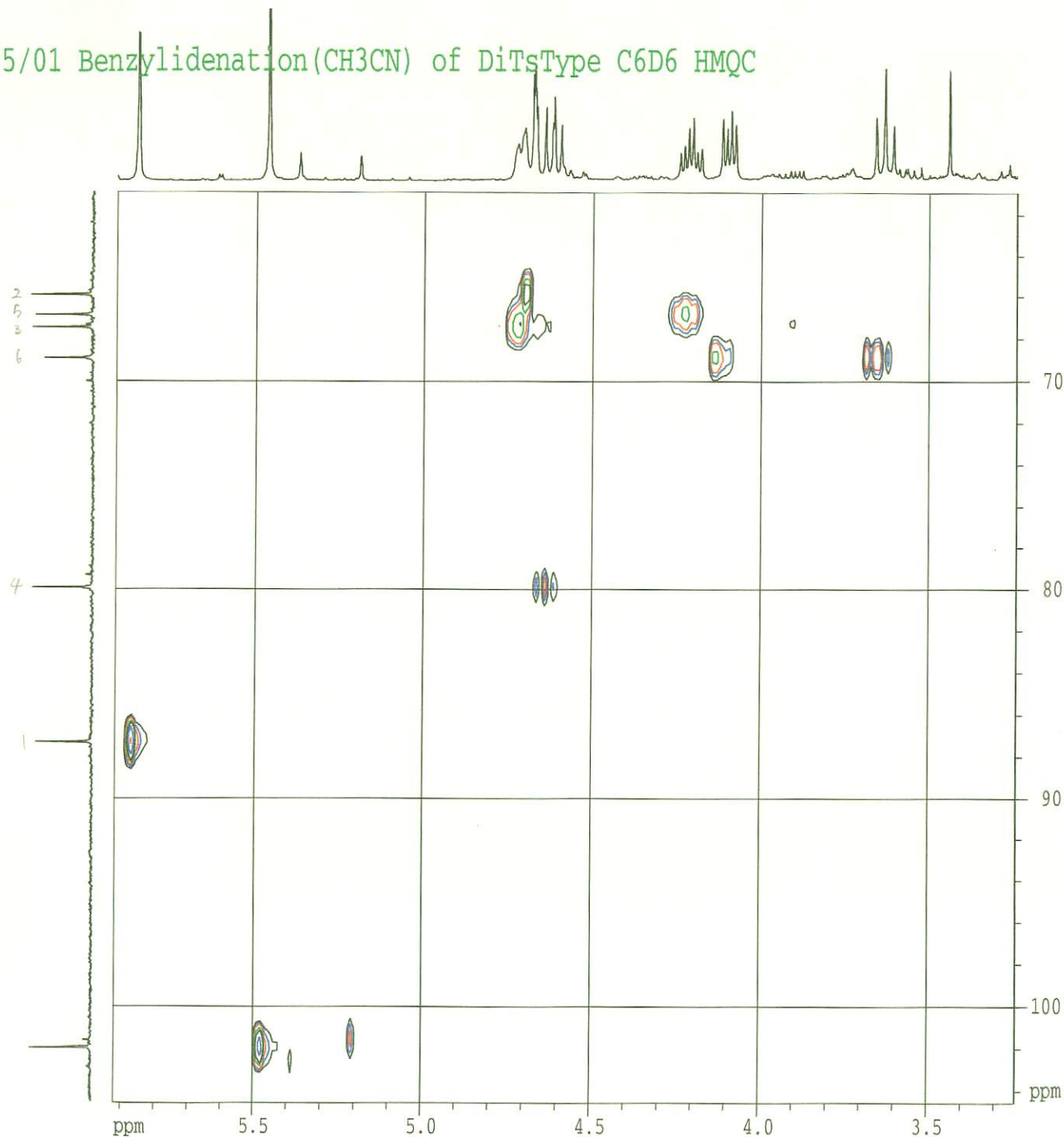
===== CHANNEL f1 =====
 NUC1 13C
 P1 9.00 usec
 PL1 -2.00 dB
 SFO1 100.6237964 MHz

===== CHANNEL f2 =====
 CPDPRG2 waltz16
 NUC2 1H
 PCPD2 100.00 usec
 PL2 120.00 dB
 PL12 17.00 dB
 PL13 17.00 dB
 SFO2 400.1316005 MHz

F2 - Processing parameters
 SI 65536
 SF 100.6127486 MHz
 WDW EM
 SSB 0
 LB 2.00 Hz
 GB 0
 PC 1.40

1D NMR plot parameters
 CX 20.00 cm
 F1P 200.000 ppm
 F1 20122.55 Hz
 F2P -0.500 ppm
 F2 -50.30 Hz
 PPMCM 10.02500 ppm/cm
 HZCM 1008.64270 Hz/cm

01/05/01 Benzylidenation(CH3CN) of DiTsType C6D6 HMQC



```

Current Data Parameters
NAME      Tomo5
EXFNO    12
PROCNO    1

F2 - Acquisition Parameters
Date_    20010501
Time     19.02
INSTRUM  dpx400
PROBHD   5 mm QNP 1H/
PULPROG  inv4gptp
TD       2048
SOLVENT  DMSO
NS       24
DS       8
SMH      5208.333 Hz
FIDRES   2.543132 Hz
AQ       0.1966580 sec
RG       8192
RM       96.000 usec
RE       6.00 usec
TE       300.0 K
DQ       0.00000300 sec
D1       2.00000000 sec
D2       0.00345000 sec
d4       0.00172500 sec
D11      0.03000000 sec
D13      0.00000300 sec
D15      0.00010000 sec
d20      0.00062500 sec
d21      0.00234600 sec
IN0      0.00001380 sec

===== CHANNEL f1 =====
NUC1     1H
P1       12.50 usec
P2       25.00 usec
PL1      -1.00 db
PL2      -1.00 db
SFO1     400.132007 MHz

===== CHANNEL f2 =====
CPDPRG2  waltz16
NUC2     13C
P3       8.80 usec
P4       26.00 usec
PCPD2    70.00 usec
PL2      -2.00 db
PL12     15.70 db
SFO2     100.6197719 MHz

===== GRADIENT CHANNEL =====
P16      1000.00 usec

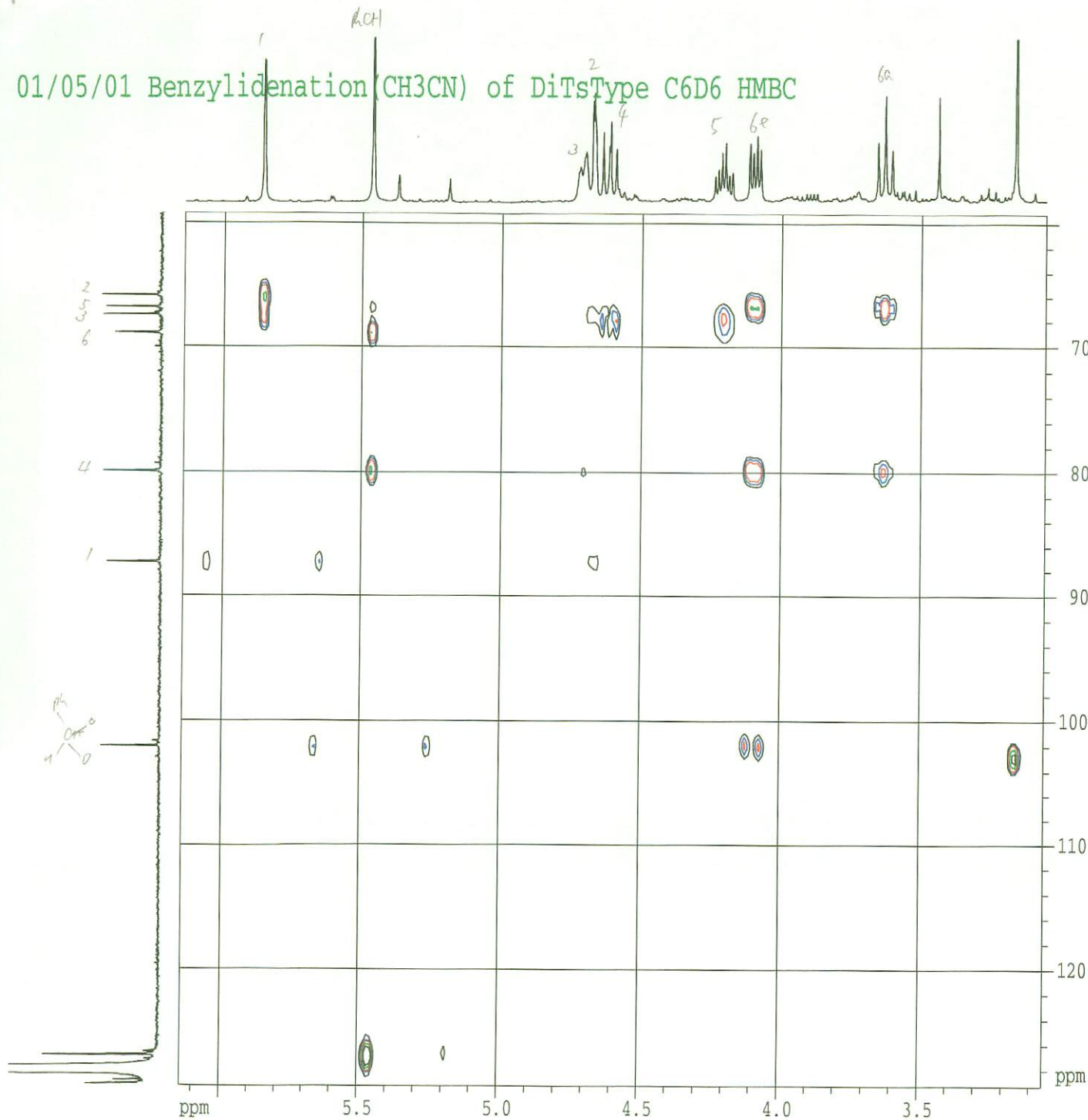
F1 - Acquisition parameters
ND0      4
TD       256
SFO1     100.6198 MHz
FIDRES   70.765396 Hz
SM       180.044 ppm

F2 - Processing parameters
SI       1024
SF       400.1300196 MHz
MSB      QSDMB
SSB      2
LB       0.00 Hz
GB       0
PC       1.40

F1 - Processing parameters
SI       512
MC2      PPT1
SF       100.6127569 MHz
MSB      QSDMB
SSB      2
LB       0.00 Hz
GB       0

2D NMR plot parameters
CX2      15.00 cm
CX1      15.00 cm
F2PLO    5.921 ppm
F2FLO    2369.26 Hz
F2PHI    3.239 ppm
F2HI     1296.06 Hz
F1PLO    104.538 ppm
F1FLO    10517.91 Hz
F1PHI    60.931 ppm
F1HI     6110.45 Hz
F2FPMCM  0.17861 ppm/cm
F2HZCM   71.54677 Hz/cm
F1FPMCM  2.90716 ppm/cm
F1HZCM   292.49695 Hz/cm
    
```

01/05/01 Benzylidenation (CH₃CN) of DiTsType C6D₆ HMBC



```

Current Data Parameters
NAME          TumoS
EXFNO         13
PROCNO        1

F2 - Acquisition Parameters
Date_         20010501
Time          22.49
INSTRUM       cpw400
PROBHD        5 mm QNP 1H/
PULPROG       inv4gs1prnd
TD            2048
SOLVENT       DMSO
NS            24
DS            8
SWH           5208.333 Hz
FIDRES        2.543132 Hz
AQ            0.1966580 sec
RG            16384
DW            96.000 usec
DE            6.00 usec
TE            300.0 K
D0            0.00000300 sec
D1            2.00000000 sec
D2            0.00345000 sec
D6            0.06500000 sec
D13           0.00000300 sec
D16           0.00010000 sec
IN0           0.00001900 sec

===== CHANNEL f1 =====
NUC1          1H
P1            12.50 usec
P2            25.00 usec
PL1           -3.00 dB
SFO1          400.1322007 MHz

===== CHANNEL f2 =====
NUC2          13C
P3            8.80 usec
PL2           -2.00 dB
SFO2          100.6237964 MHz

===== GRADIENT CHANNEL =====
P16           1000.00 usec

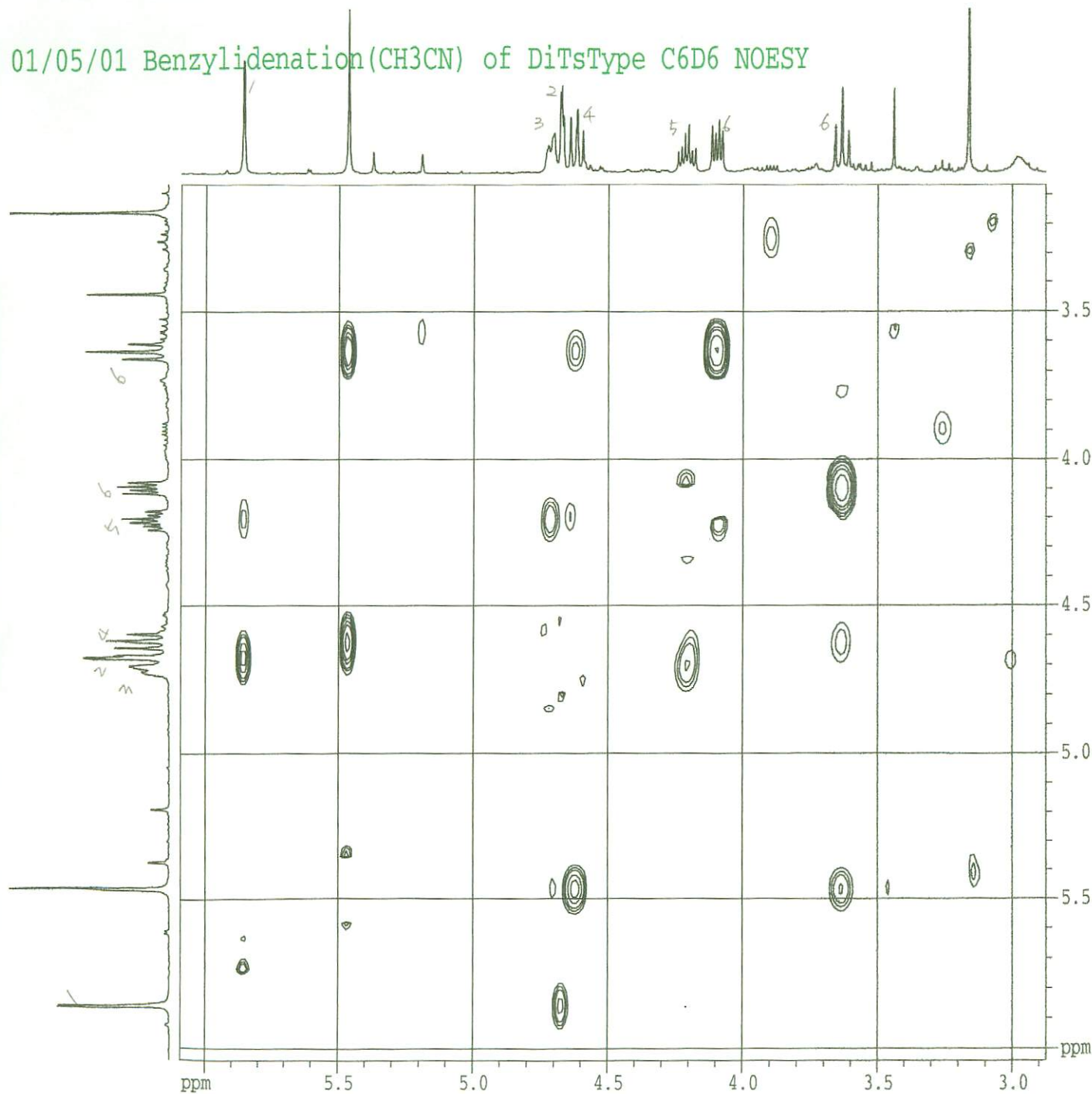
F1 - Acquisition parameters
MDD           2
TD            256
SFO1          100.6238 MHz
FIDRES        102.796051 Hz
SW            261.527 ppm

F2 - Processing parameters
SI            1024
SF            400.1300279 MHz
WDW           SINE
SSB           0
LB            0.00 Hz
GB            0
PC            1.40

P1 - Processing parameters
SI            512
MC2           QF
SF            100.6127486 MHz
WDW           SINE
SSB           0
LB            0.00 Hz
GB            0

2D NMR plot parameters
CX2           15.00 cm
CX1           15.00 cm
F2FLO         6.142 ppm
F2FID         2457.65 Hz
F2FHI         3.053 ppm
F2FLO         1221.69 Hz
F1FLO         129.217 ppm
F1FID         13000.90 Hz
F1FHI         59.231 ppm
F1FLO         5959.37 Hz
F2FPMCM       0.20593 ppm/cm
F2HZCM        82.39746 Hz/cm
F1FPMCM       4.66576 ppm/cm
F1HZCM        469.43533 Hz/cm
    
```

01/05/01 Benzylidenation(CH3CN) of DiTsType C6D6 NOESY



```

Current Data Parameters
NAME      TomoS
EXPNO    14
PROCNO    1

F2 - Acquisition Parameters
Date_     20010502
Time      2.42
INSTRUM   dpx400
PROBHD    5 mm QNP 1H/
PULPROG   noesytp
TD        1024
SOLVENT   DMSO
NS         16
DS         4
SWH       5208.333 Hz
FIDRES    5.086263 Hz
AQ        0.0983540 sec
RG        203.2
DM        96.000 usec
DE        6.00 usec
TE        300.0 K
D0        0.00000300 sec
D1        1.00000000 sec
D8        1.00000000 sec
IND       0.00009600 sec

===== CHANNEL f1 =====
NUC1      1H
P1        12.50 usec
PL1       -3.00 dB
SFO1      400.1322007 MHz

F1 - Acquisition parameters
ND0       2
TD        256
SFO1      400.1322 MHz
FIDRES    20.345053 Hz
SW        13.017 ppm

F2 - Processing parameters
SI        1024
SF        400.1300279 MHz
WDW       QSINE
SSB       2
LB        0.00 Hz
GB        0
PC        1.40

F1 - Processing parameters
SI        512
MC2       TPP1
SF        400.1300279 MHz
WDW       QSINE
SSB       2
LB        0.00 Hz
GB        0

2D NMR plot parameters
CX2       15.00 cm
CX1       15.00 cm
F2PLO     6.091 ppm
F2LO      2437.31 Hz
F2PHI     2.875 ppm
F2HI      1150.48 Hz
F1FLO     6.040 ppm
F1LO      2416.96 Hz
F1PHI     3.066 ppm
F1HI      1226.78 Hz
F2PRMCM   0.21440 ppm/cm
F2HZCM    85.78831 Hz/cm
F1PRMCM   0.19830 ppm/cm
F1HZCM    79.34570 Hz/cm
    
```