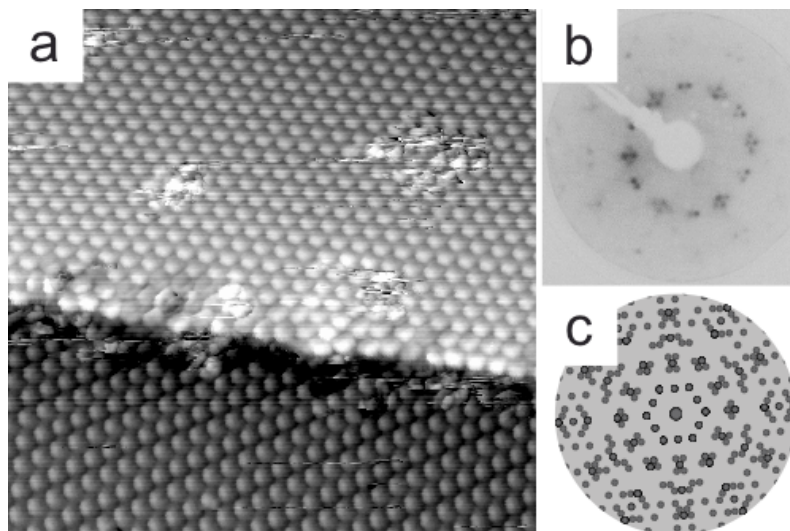


Supporting Information

Polymorph selection in 2D crystals by phase transition blocking

Leo Merz,^a Tobias Bauert,^a Manfred Parschau,^a Georg Koller,^{a,S} Jay S. Siegel,^b and Karl-Heinz Ernst^{*,a,b}



Supporting Figure 1. (a) 26 nm × 26 nm STM image showing the coexistence of polymorphs at 69K. Two copper terraces are covered with two different polymorphs. The phase boundary – running almost horizontally – coincides with a Cu substrate step. Upper terrace: polymorph II, lower terrace: polymorph III (STM parameters: –1.8 V, 200 pA). (b) LEED image of the conglomerate at 100 K with the simulated pattern shown in (c). The LEED pattern is equal to the superposition of the two LEED patterns of the pure polymorphs (see Fig. 2 b,c and f,g).