

The first members of the octasubstituted naphthalene spider-host series with type I (*abababab*) conformation : gateway to new nano-host gas storage materials.

Louis J. Farrugia,^a James H. Gall,^a David D. MacNicol^{a,*} and Ross MacSween^a

Supplementary Material

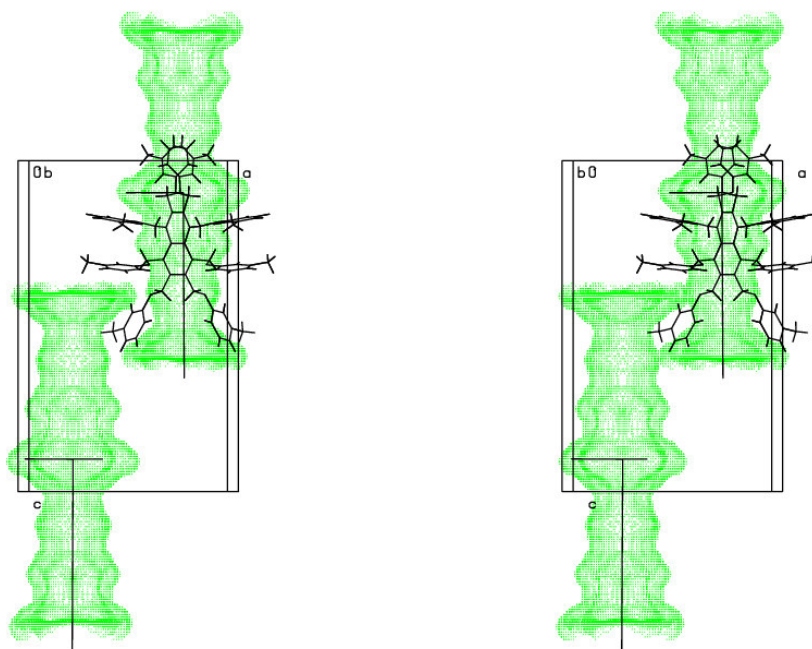


Fig S1. Stereoview of the solvent accessible cavities in the crystal structure of **3** (tetraglyme adduct)

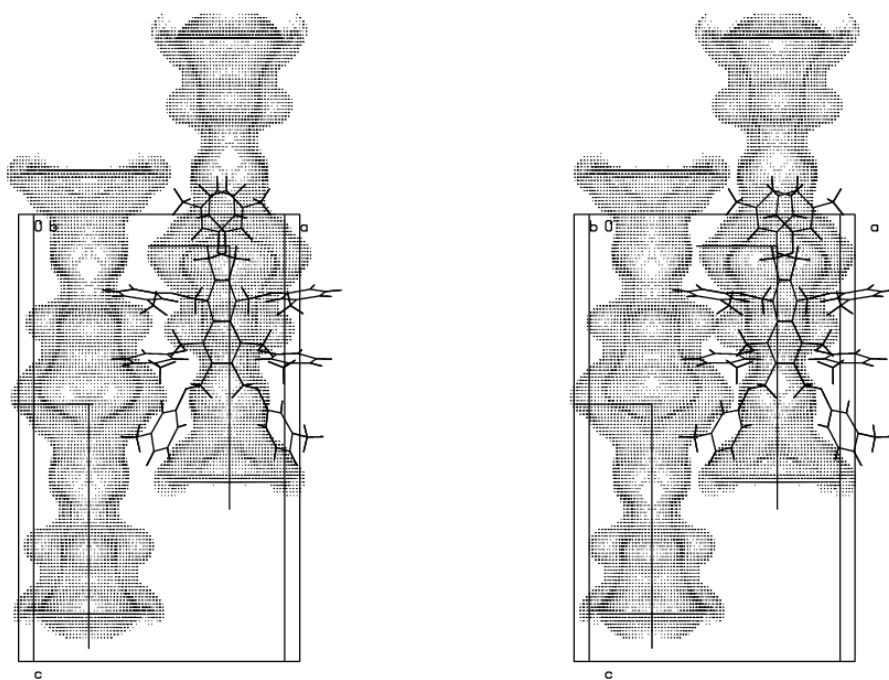


Fig S2. Stereoview of the solvent accessible cavities in the crystal structure of **3** (CS₂ adduct)

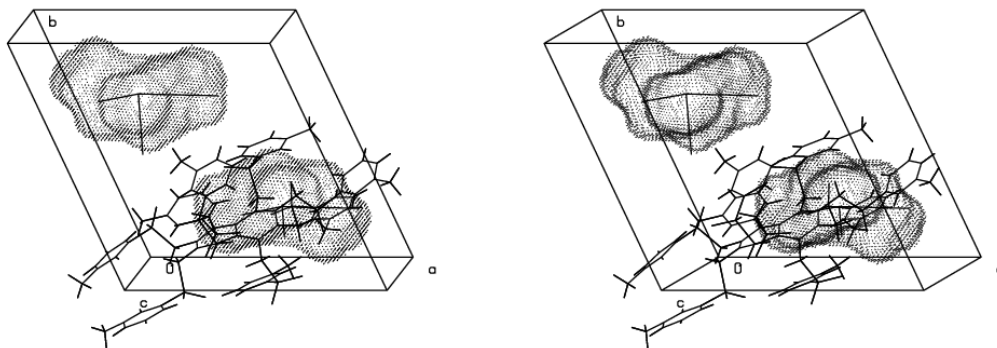


Fig S3. Stereoview of the solvent accessible cavities in the crystal structure of **7** (DMSO adduct)

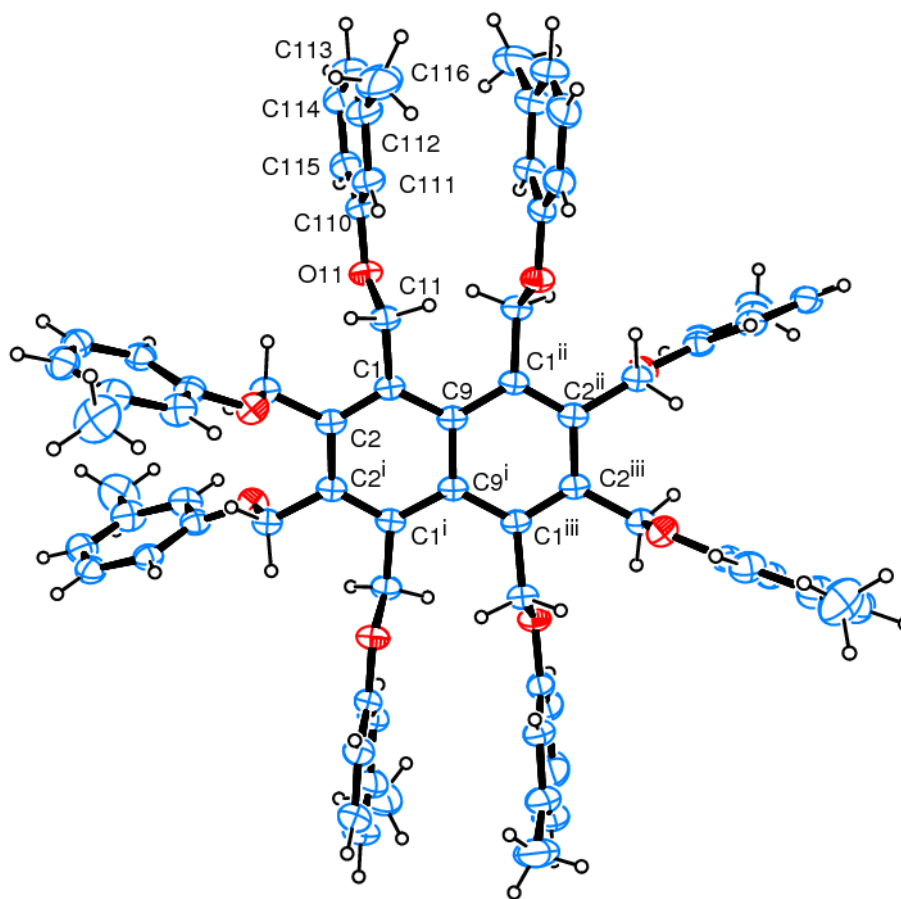


Fig S4. ORTEP plot of compound **3** (tetraglyme adduct) viewed normal to the naphthalene plane. Symmetry codes: (i) $3/2-x, 1/2-y, z$; (ii) $1/2+y, -1/2+x, 1/2-z$; (iii) $1-y, 1-x, 1/2-z$;

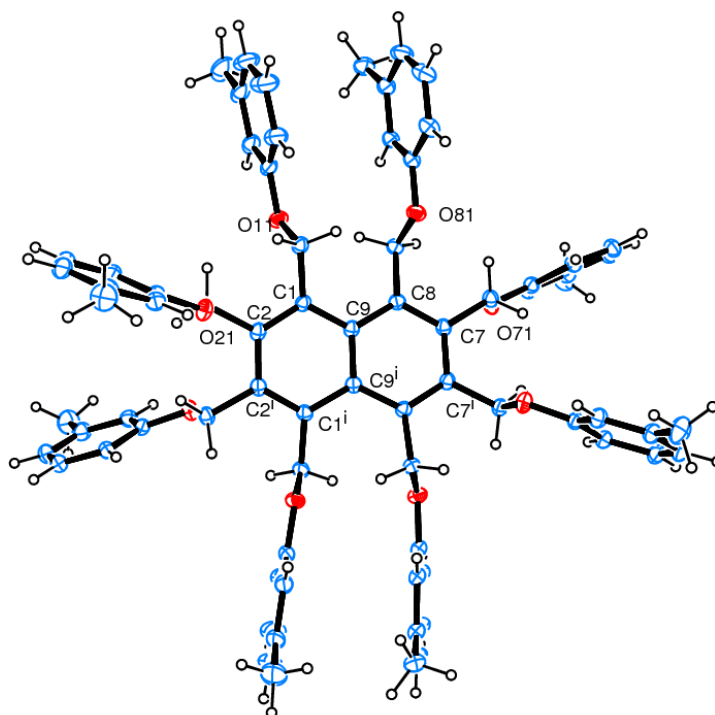


Fig S5. ORTEP plot of compound **3** (CS₂ adduct) viewed normal to the naphthalene plane. Symmetry codes: (i) 3/2-x, 1/2-y, z

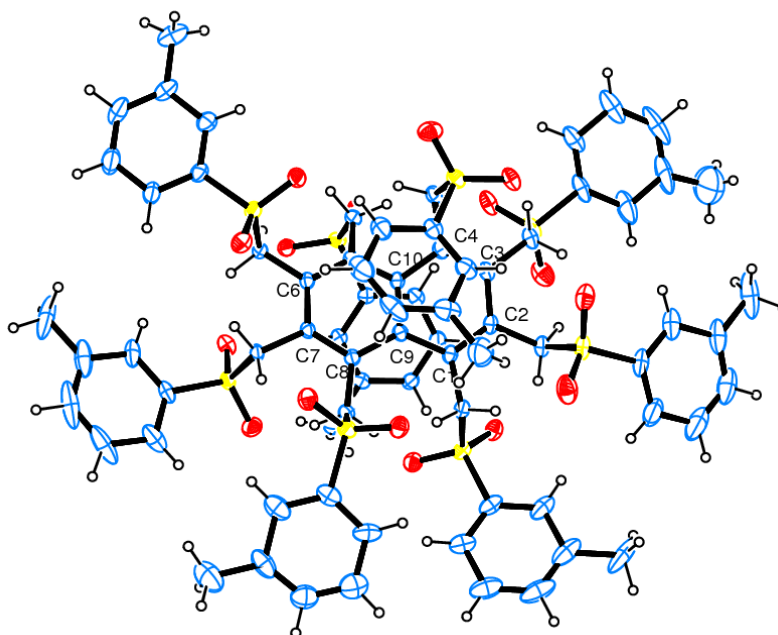


Fig S6. ORTEP plot of compound **7** (DMSO adduct) viewed normal to the naphthalene plane.