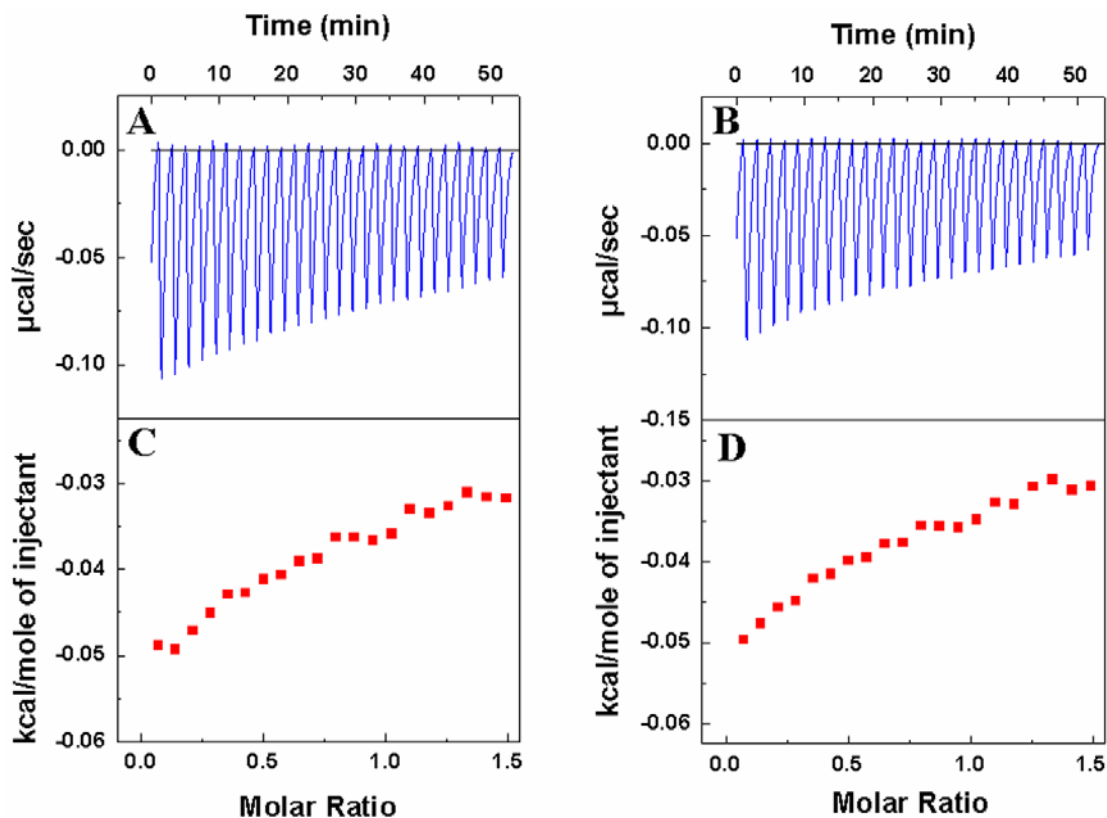


Supporting Information (S1):



**S1.** (A & B) Isothermal titration calorimetric data recorded during successive injections of  $10 \mu\text{l}$  aqueous  $\text{CaCl}_2$  (A) and  $\text{MgCl}_2$  (B) solution ( $10^{-2}$  M) into the titration cell containing 1.47 ml of water. (C & D) Binding isotherms obtained by integration of the raw data shown in the A and B respectively plotted as a function of the metal ion molar concentration in solution.