

Supplementary figures:

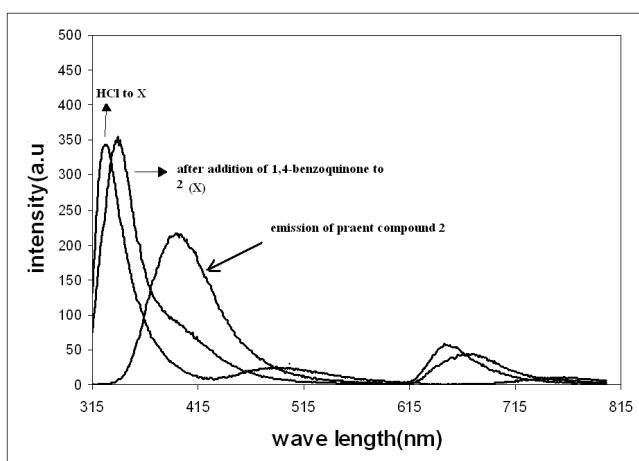


Fig S1 : Effect on emission spectra of 2 on addition of 1,4-dihydroxy benzene and hydrochloric acid ( $\lambda_{ex} = 310\text{nm}$ )

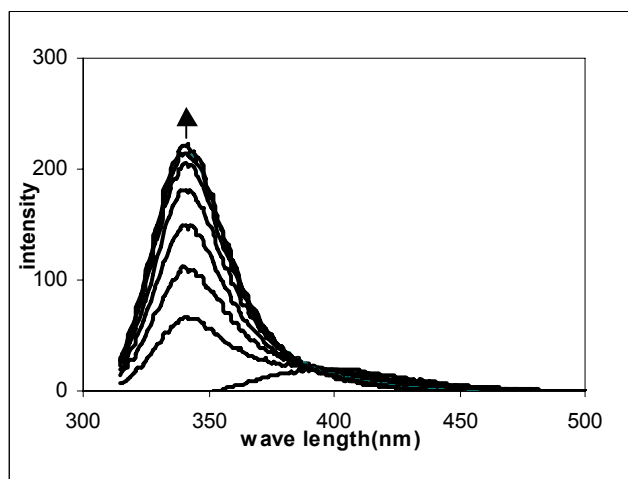


Fig S2 : The changes of fluorescence emission of 2 ( $3.2 \times 10^{-4}$  M, 3ml ) on addition of 1,4-dihydroxy benzene [ $5\mu\text{l}$  of 0.1(M) solution in methanol in each aliquot

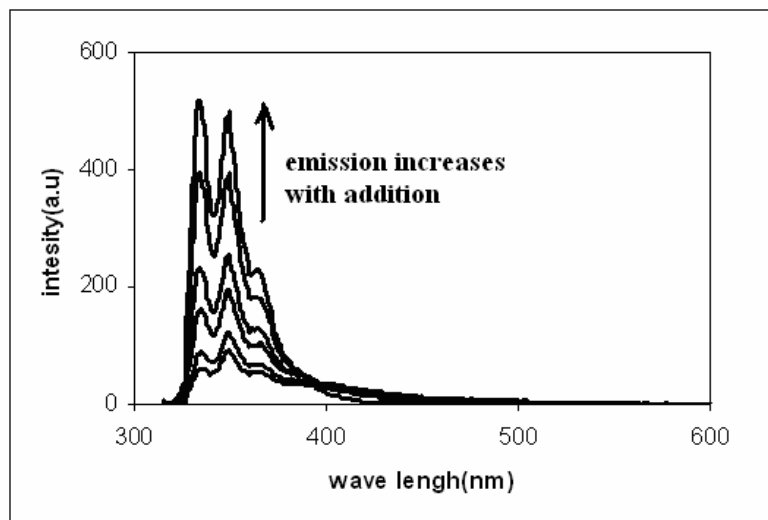


Fig S 3 : Effect on emission spectra of **2** on addition of 1,5-dihydroxynaphthalene and hydrochloric acid ( $\lambda_{ex} = 310\text{nm}$ )