

Supporting Information

Microwave-assisted solvothermal synthesis and growth mechanism of $\text{WO}_3 \cdot (\text{H}_2\text{O})_{0.33}$ hierarchical microstructures

Ying-Li Ma,^a Lei Zhang,^a Xiao-Feng Cao,^a Xue-Tai Chen^{*a} and Zi-Ling Xue^b

^aState Key Laboratory of Coordination Chemistry, Nanjing National Laboratory of Microstructures, School of

Chemistry and Chemical Engineering, Nanjing University, Nanjing 210093, P. R. China. Fax: +86-25-83314502.

E-mail: xtchen@netra.nju.edu.cn

^bDepartment of Chemistry, The University of Tennessee, Knoxville, Tennessee 37996-1600, USA.

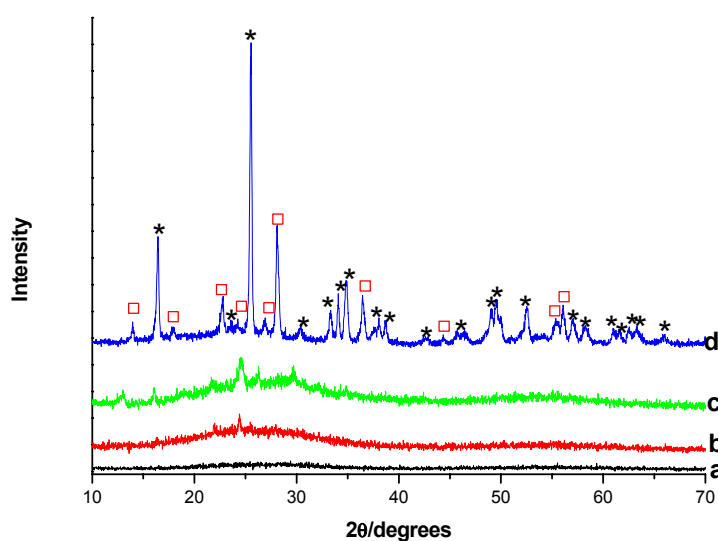


Fig. S1 XRD patterns of the as-prepared products at 150 °C when 0.279g $\text{Na}_2\text{H}_2\text{EDTA}$, 5ml glycerol and 1ml HCl

was added with different reaction times: (a) 1 min, (b) 2 min, (c) 3 min and (d) 4 min. ◻: $\text{WO}_3 \cdot (\text{H}_2\text{O})_{0.33}$ and

*: $\text{WO}_3 \cdot \text{H}_2\text{O}$.

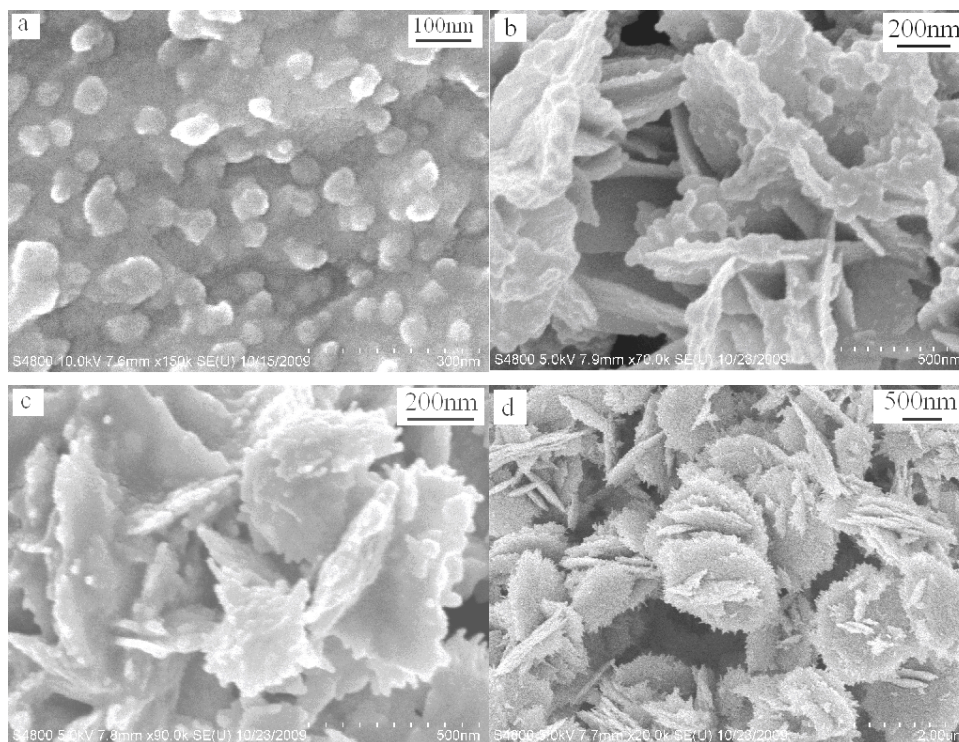


Fig. S2 SEM images of the as-prepared products at 150 °C when 0.279 g $\text{Na}_2\text{H}_2\text{EDTA}$, 5 ml glycerol and 1ml HCl was added with different reaction times: (a) 1 min, (b) 2 min, (c) 3 min and (d) 4 min.

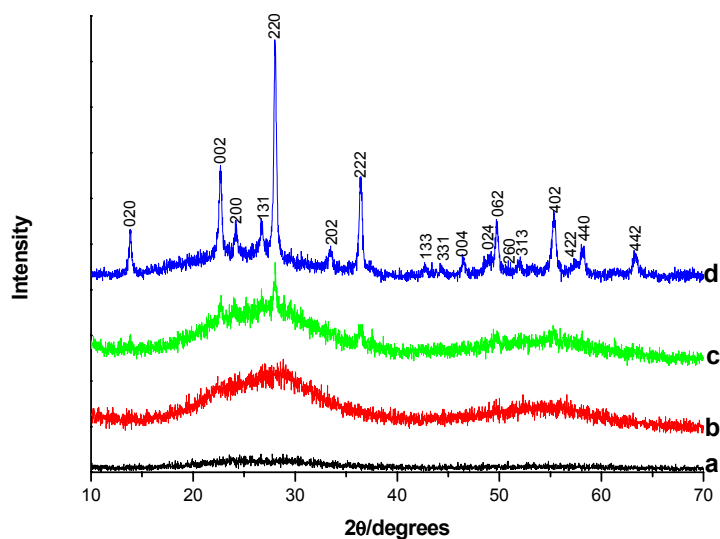


Fig. S3 XRD patterns of the as-prepared products at 150 °C when 1ml glycerol, 0.1861g $\text{Na}_2\text{H}_2\text{EDTA}$ and 1ml HCl was added with different reaction times: (a) 5 s, (b) 15 s, (c) 1 min and (d) 3 min.

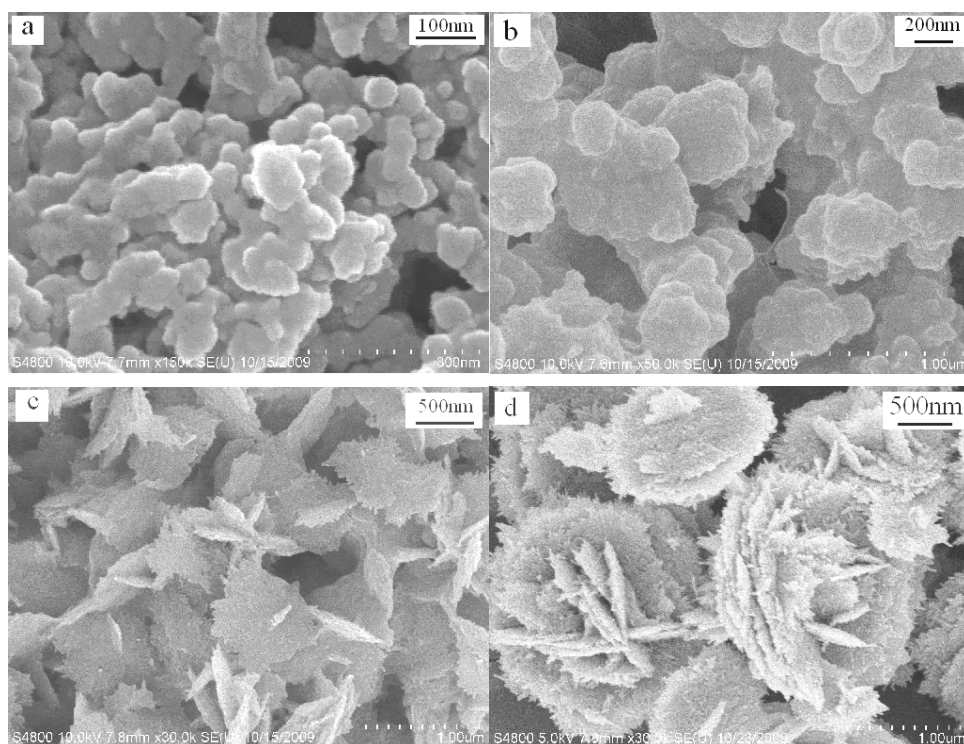


Fig. S4 SEM images of the as-prepared products at 150 °C when 1ml glycerol, 0.1861g Na₂H₂EDTA and 1ml HCl was added with different reaction times: (a) 5 s, (b) 15 s, (c) 1 min and (d) 3 min.