

Supporting Information

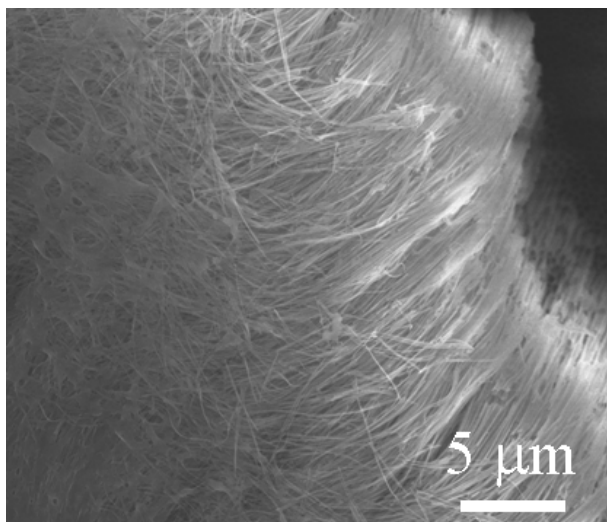


Figure S1 a typical SEM images of the as-prepared CuInSe₂ nanowires array prepared with AAO template of 100 nm pore size.

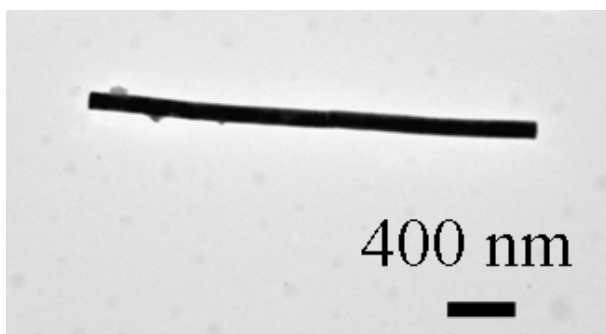


Figure S2 A TEM image of the as-prepared CuInSe₂ nanowires array prepared with AAO template of 100 nm pore size.

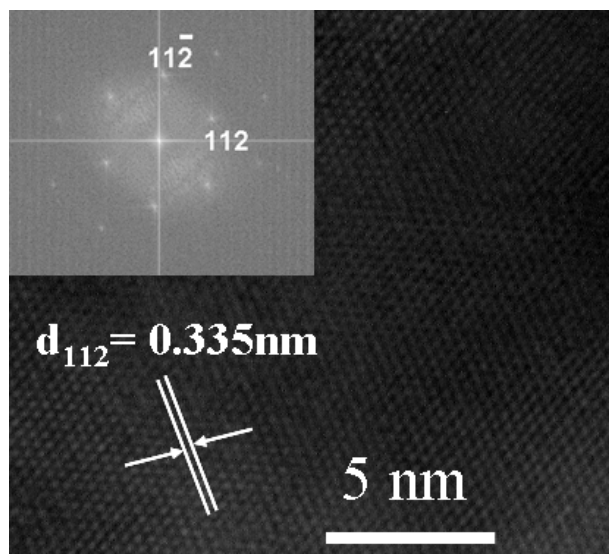


Figure S3 A HRTEM image of the as-prepared CuInSe₂ nanowires array prepared with AAO template of 100 nm pore size. The inset shows a two-dimensional Fourier transform pattern of the lattice resolved image.