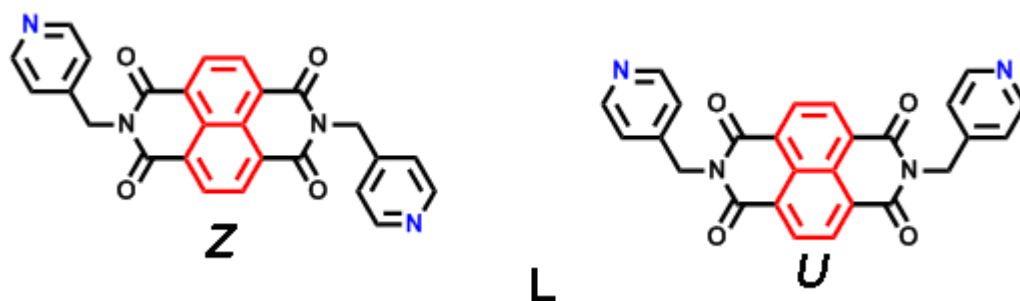


Supporting Information

Anion effect on the structural diversity of three 1D coordination polymers based on a pyridyl diimide ligand

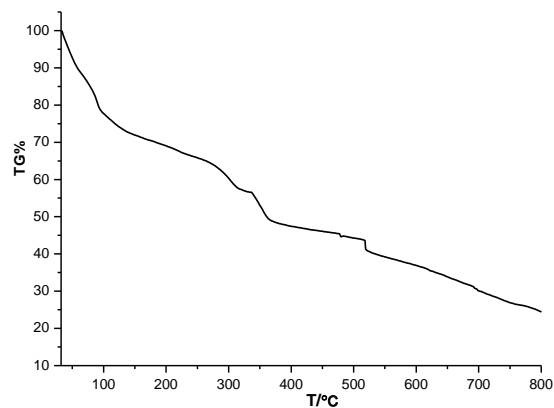
Guo-Bi Li,^a Jian-Rong He,^a Jun-Min Liu*,^a and Cheng-Yong Su*^{a,b}

Scheme S1

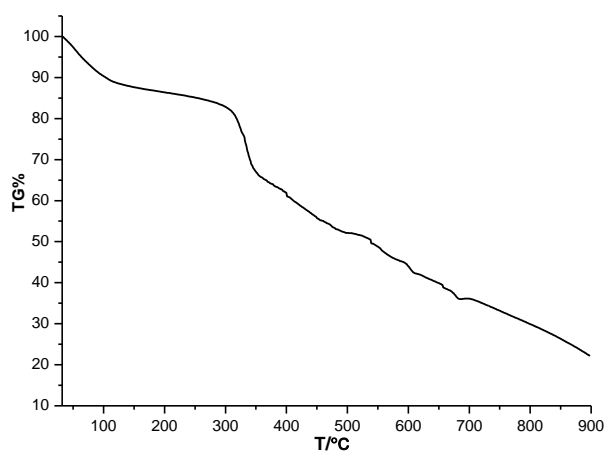


The different conformations of the ligand L (L= 4-pmtd.
N,N'-bis(4-pyridylmethyl)naphthalene diimide)

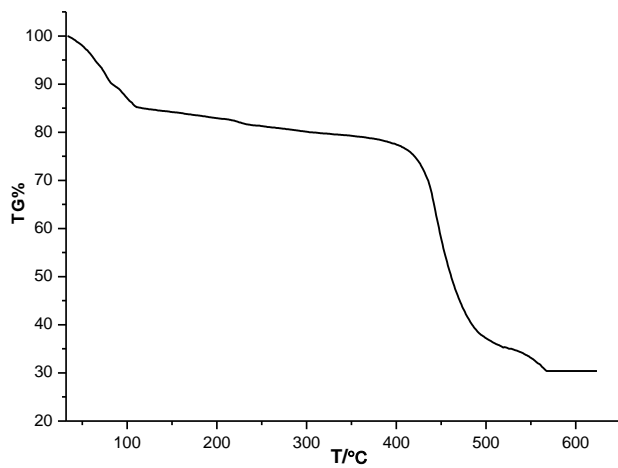
Figure S1



TGA curve of complex 1.

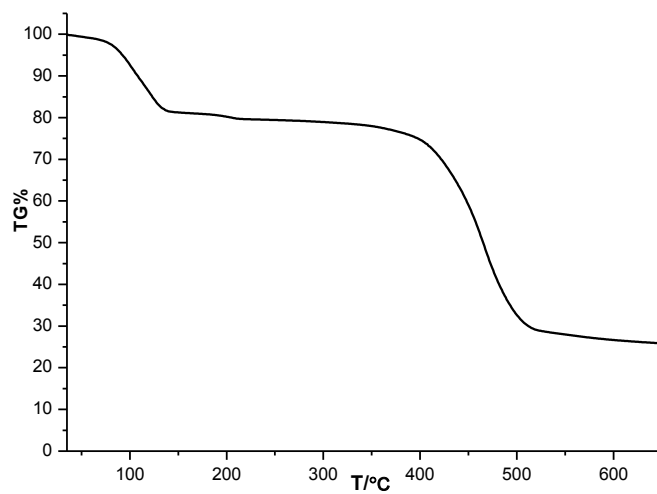


TGA curve of complex 2.

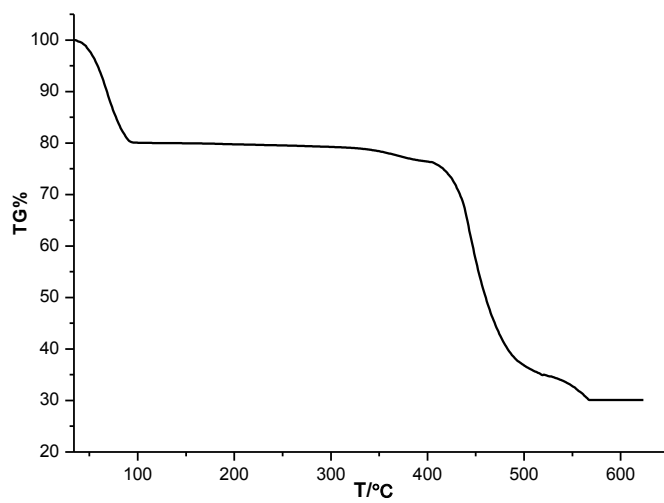


TGA curve of complex 3.

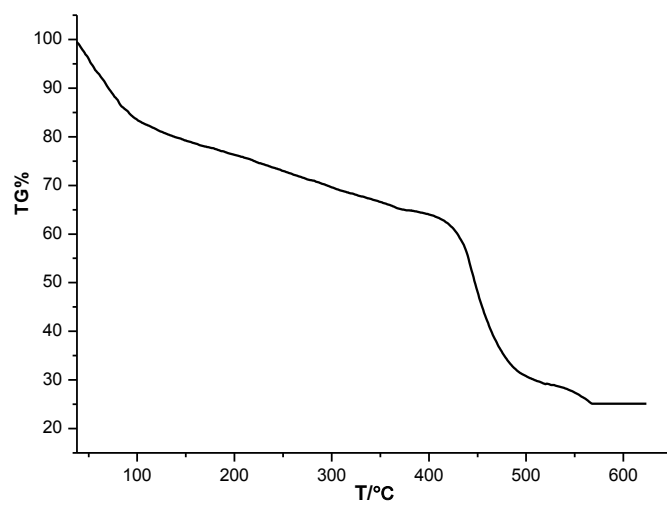
Figure S2



TGA curve of complex **3A**.

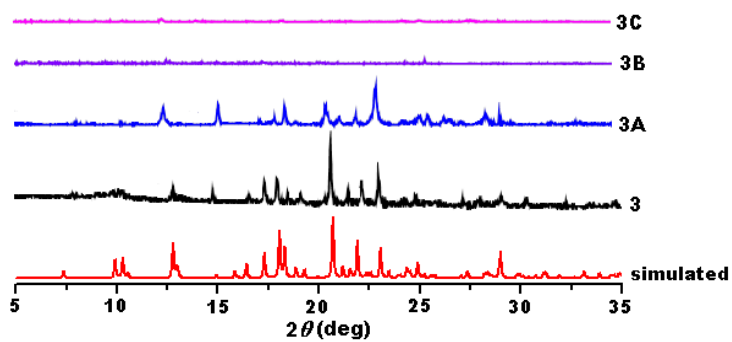


TGA curve of complex **3B**.



TGA curve of complex 3C.

Figure S3



PXRD patterns for complexes 3, 3A, 3B, and 3C.