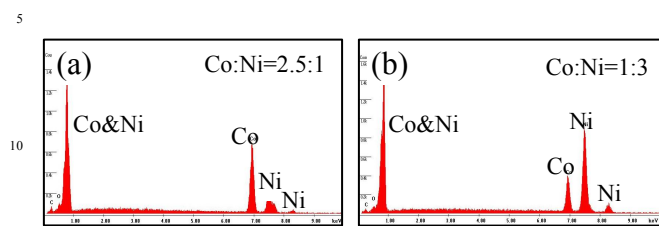
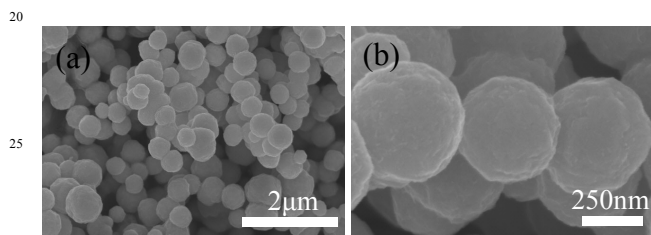


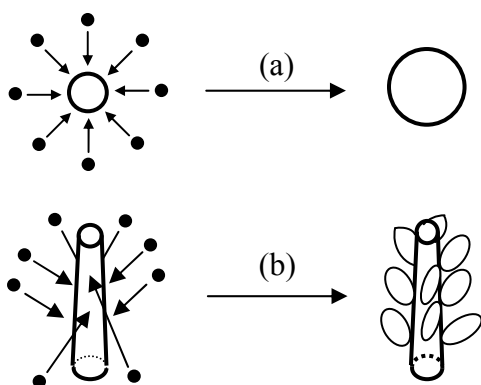
Electronic supplementary information(ESI)



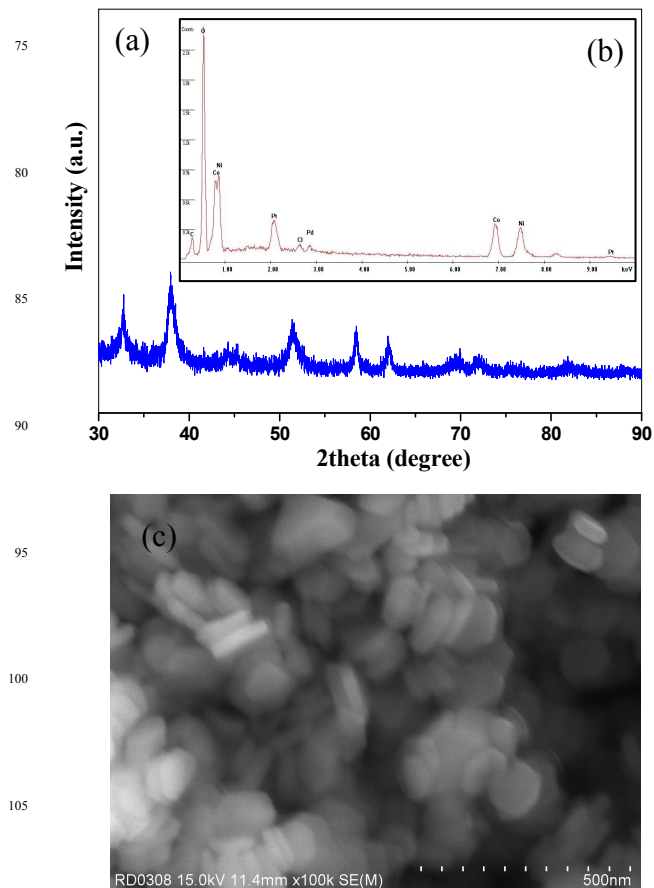
15 Fig. S1. Typical EDS patterns of irregularly-shaped 3D architectures (a) and microspheres (b).



20 Fig. S2. SEM images of the sample prepared by using NaH_2PO_2 as reducing agent.



55 Fig. S3. A rough illustration of the formation of microspheres (a) and wheat-ear-like microstructures (b).



110 Fig. S4. XRD pattern (a), EDS pattern (b) and SEM image (c) of the sample obtained at reaction time of 20 min in the absence of sodium citrate.