

Supporting information

Precisely tailoring dendritic α -Fe₂O₃ structures along [10-10] directions

Zhong Liu,^{a, c} Baoliang Lv,^{* a} Dong Wu,^a Yan Zhu,^b Yuhan Sun^{* a, b}

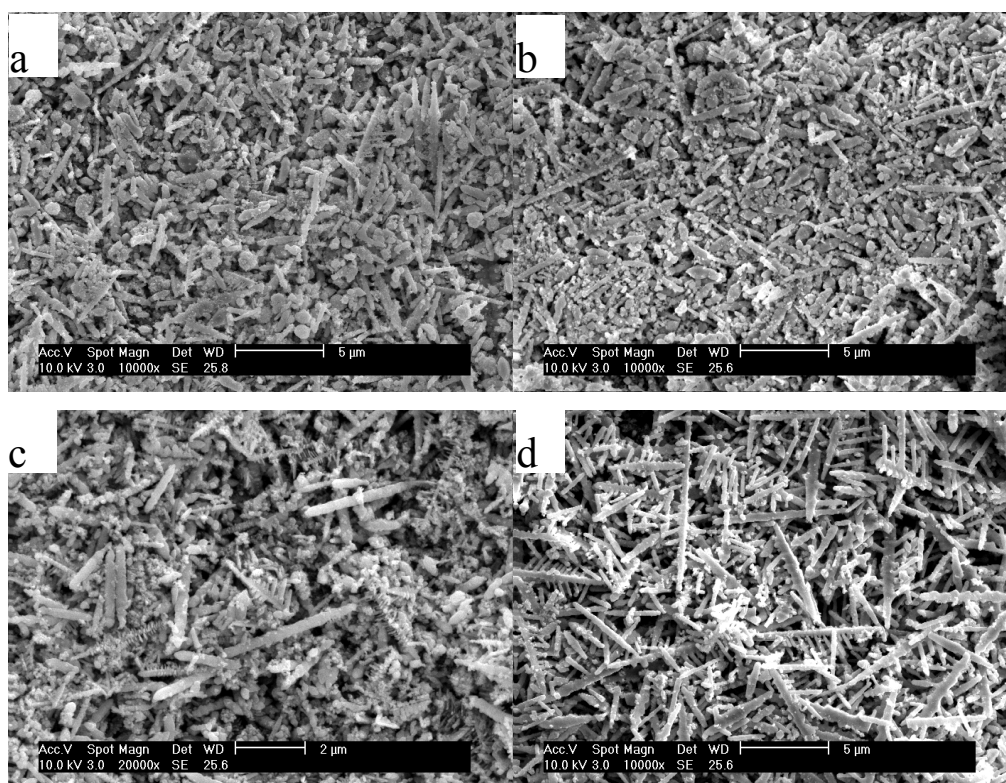


Figure S1: the morphologies of α -Fe₂O₃ obtained by vary the concentration of K₃[Fe(CN)₆] to (a)5, (b)20, (c)30, and (d)50 mM/L with adding benzoic acid (60 mM/L) and NaOH (60 mM/L) at 220 °C for 24h.

Sample number	pH values	
	before reaction	after reaction
S1	8.31	9.20
S2	12.14	9.22
S3	12.30	9.26
S4	12.42	9.35
S5	12.94	9.48
S6	13.12	9.56

Table S1: the pH values of solution obtained before and after reaction.