

Electronic Supplementary Information (ESI)

The conformation of pyrogallol as a result of cocrystallization with N-heterocyclic bases

Mikelis V. Veidis,^{*a} Liana Orola,^a and Ilpo Mutikainen^b and Inese Sarcevica^{ac}

^aFaculty of Chemistry, University of Latvia, Kr. Valdemara 48, Riga, LV-1013, Latvia

^bLaboratory of Inorganic Chemistry, Department of Chemistry, University of Helsinki, FIN-00014, Helsinki, Finland

^cLatvia Institute of Organic Synthesis, Aizkraukles 21, Riga, LV-1006, Latvia

Contents

Figure S1 PXRD patterns of **1** obtained by crystallization from ethanol, by liquid-assisted grinding, and calculated pattern from the crystal structure.

Figure S2 PXRD patterns of **2** obtained by crystallization from ethanol, by liquid-assisted grinding, and calculated pattern from the crystal structure.

Figure S3 PXRD pattern of **3a** obtained by crystallization from ethanol, by liquid-assisted grinding, and calculated pattern from the crystal structure.

Figure S4 PXRD patterns of **3b** obtained by liquid-assisted grinding, by seeding crystallization from ethanol, and calculated pattern from the crystal structure.

Figure S5 The molecular structure of **1** with displacement ellipsoids drawn at 50% probability level.

Figure S6 The molecular structure of **2** with displacement ellipsoids drawn at 50% probability level.

Figure S7 The molecular structure of **3a** with displacement ellipsoids drawn at 50% probability level.

Figure S8 The molecular structure of **3b** with displacement ellipsoids drawn at 50% probability level.

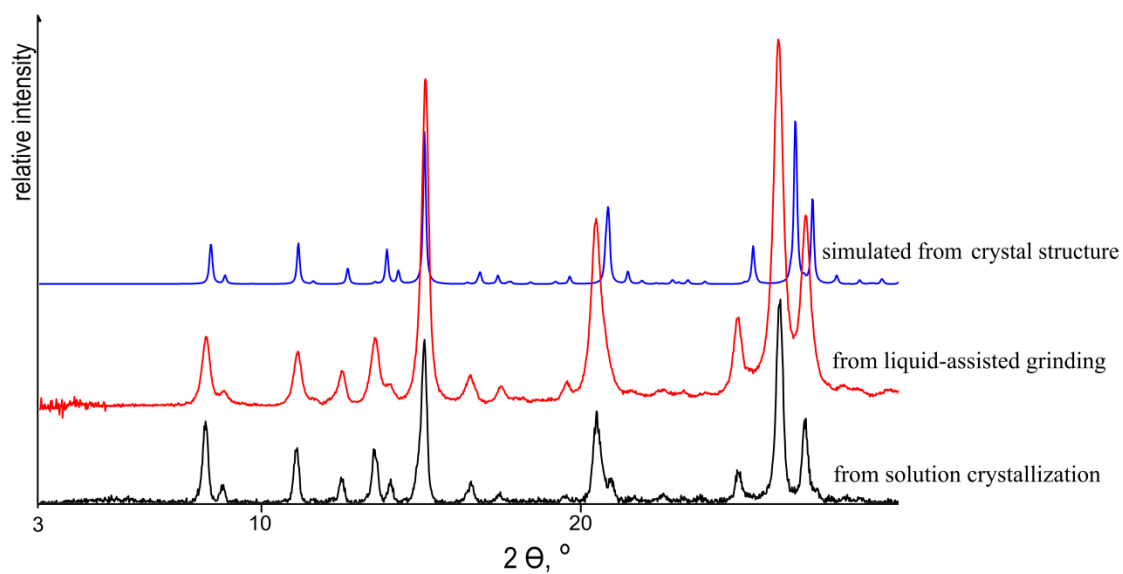


Figure S1. PXRD patterns of **1** obtained by crystallization from ethanol, by liquid-assisted grinding, and calculated pattern from the crystal structure.

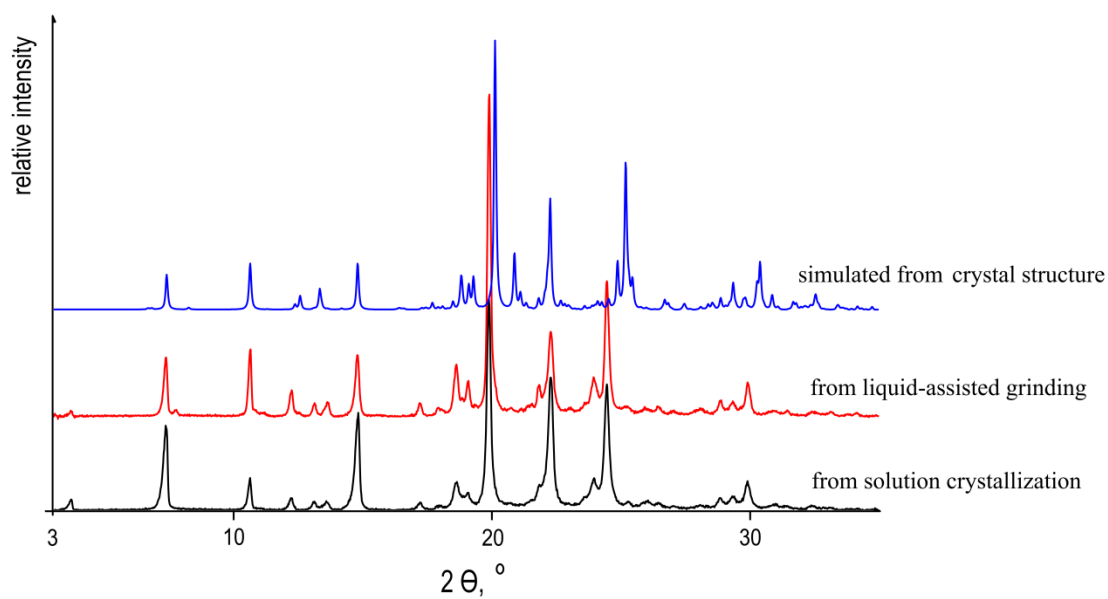


Figure S2. PXRD patterns of **2** obtained by crystallization from ethanol, by liquid-assisted grinding, and calculated pattern from the crystal structure.

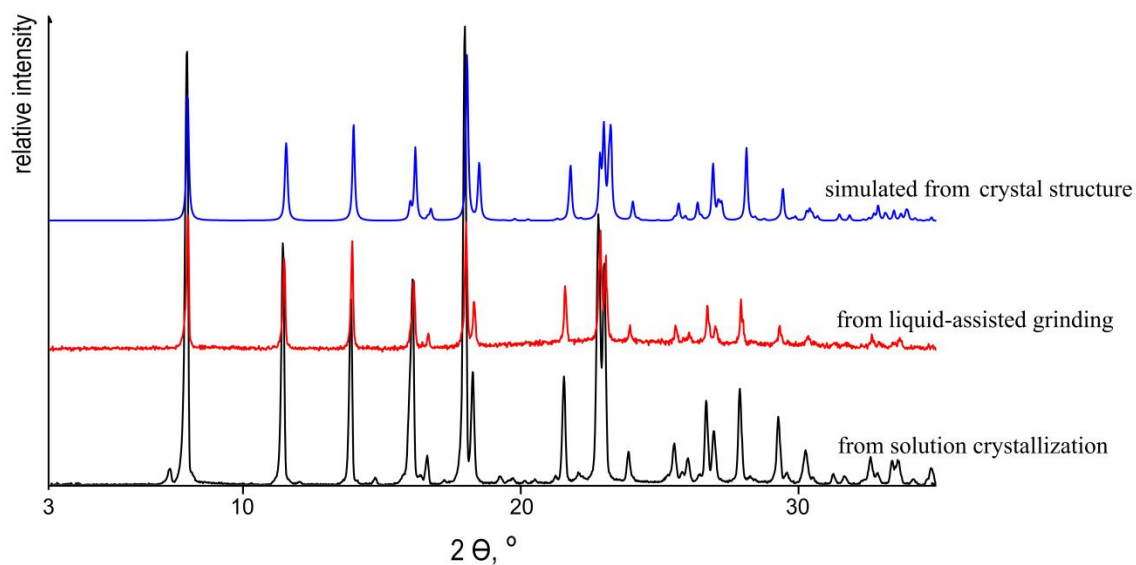


Figure S3. PXRD pattern of **3a** obtained by crystallization from ethanol, by liquid-assisted grinding, and calculated pattern from the crystal structure.

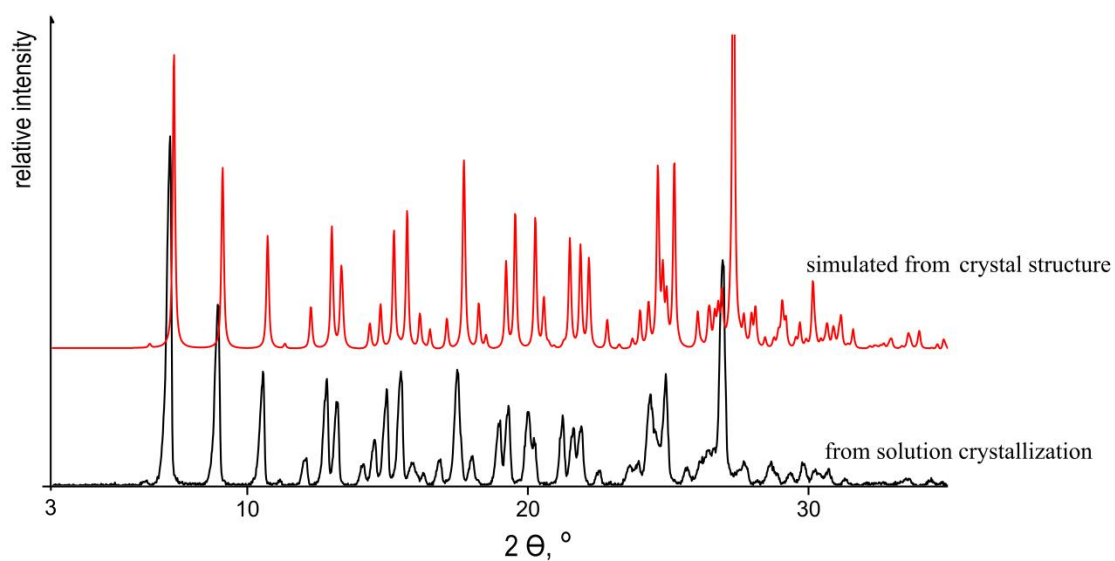


Figure S4. PXRD patterns of **3b** obtained by liquid-assisted grinding, by seeding crystallization from ethanol, and calculated pattern from the crystal structure.

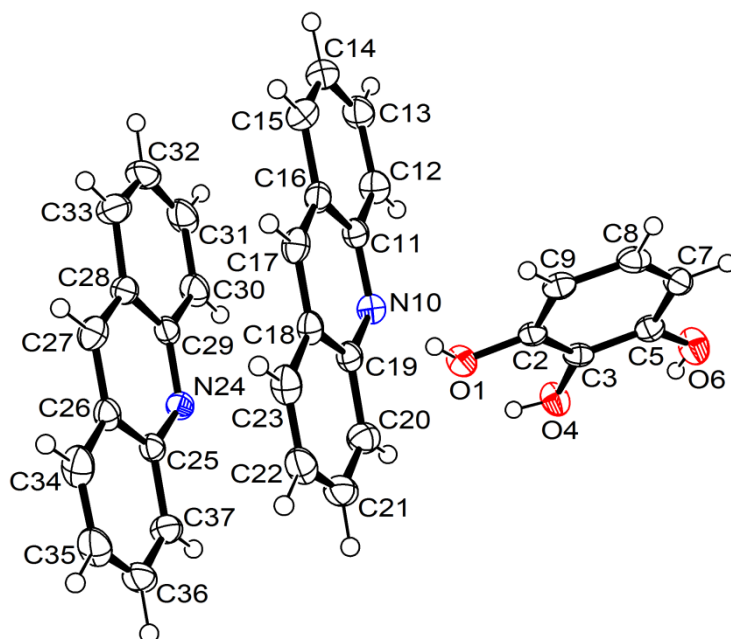


Figure S5. The molecular structure of **1** with displacement ellipsoids drawn at 50% probability level.

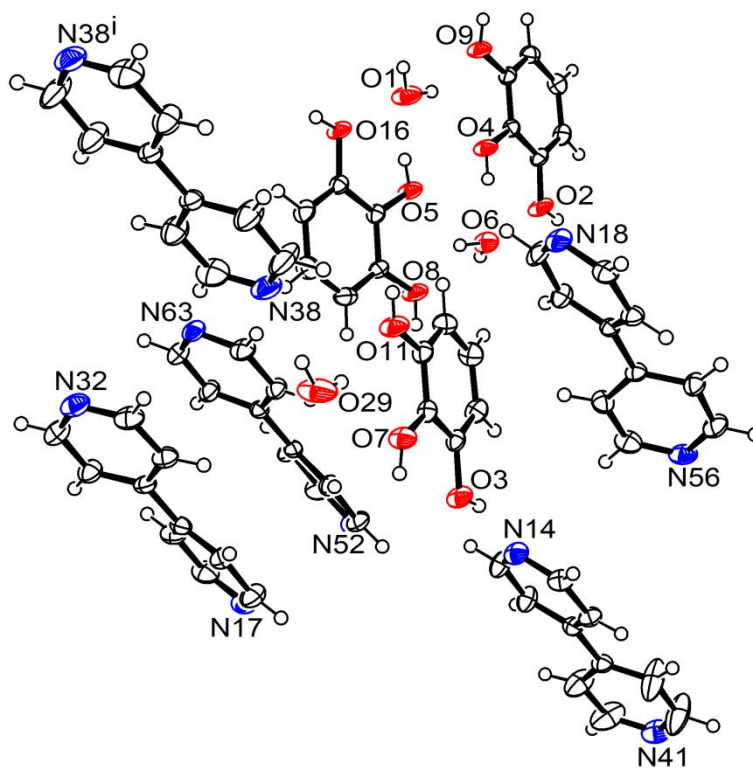


Figure S6. The molecular structure of **2** with displacement ellipsoids drawn at 50% probability level.

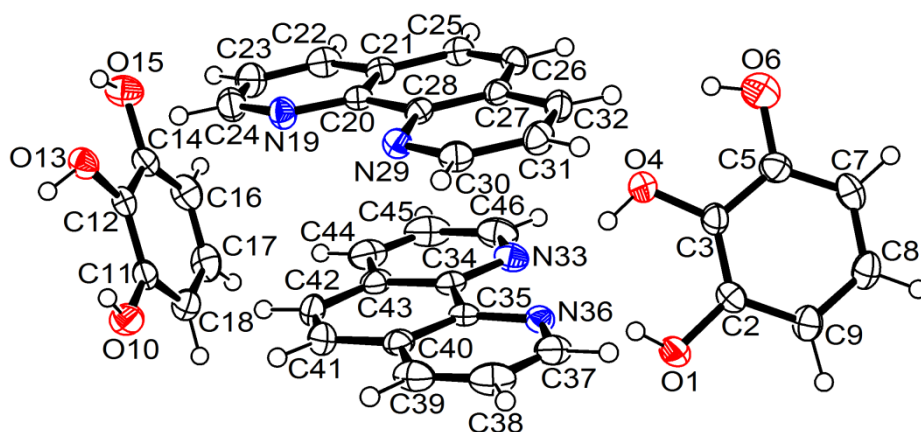


Figure S7. The molecular structure of **3a** with displacement ellipsoids drawn at 50% probability level.

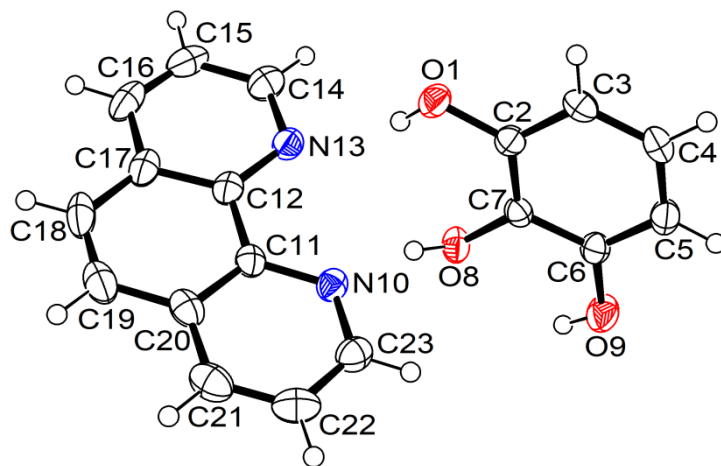


Figure S8. The molecular structure of **3b** with displacement ellipsoids drawn at 50% probability.