

## ELECTRONIC SUPPLEMENTARY INFORMATION

### **Solid-state visible molecular recognition system of bisphenol A and its derivatives by solid co-grinding crystallization with benzoquinone**

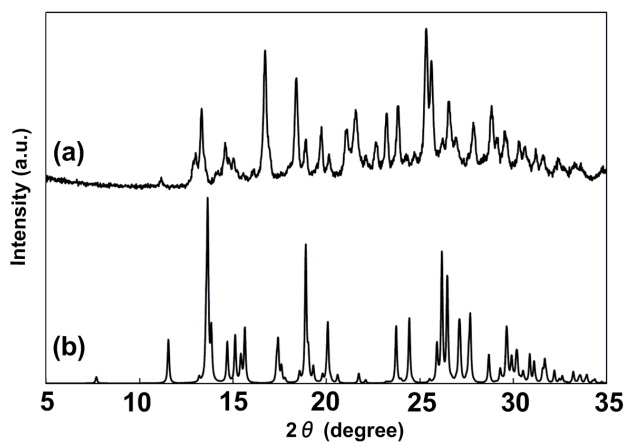
Noriaki Iwase,<sup>a</sup> Yuhei Kobayashi,<sup>a</sup> Takafumi Kinuta,<sup>a</sup> Tomohiro Sato,<sup>a</sup> Nobuo Tajima,<sup>b</sup> Reiko Kuroda,<sup>c</sup>  
Yoshio Matsubara<sup>a</sup> and Yoshitane Imai\*<sup>a</sup>

<sup>a</sup> *Department of Applied Chemistry, Faculty of Science and Engineering, Kinki University, 3-4-1  
Kowakae, Higashi-Osaka, Osaka 577-8502, Japan.*

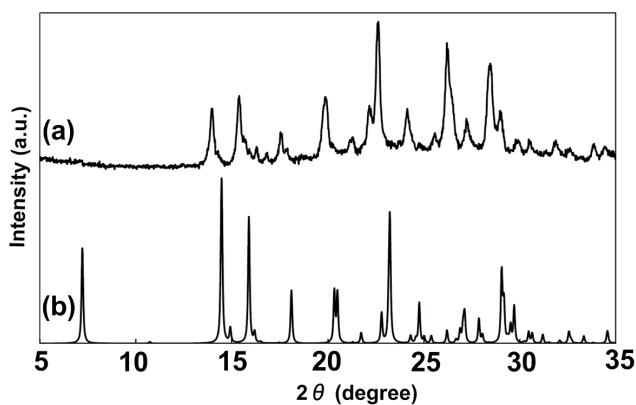
<sup>b</sup> *Computational Materials Science Center, National Institute for Materials Science 1-2-1 Sengen,  
Tsukuba, Ibaraki 305-0047, Japan.*

<sup>c</sup> *Department of Life Sciences, Graduate School of Arts and Sciences, The University of Tokyo, 3-8-1  
Komaba, Meguro-ku, Tokyo 153-8902, Japan.*

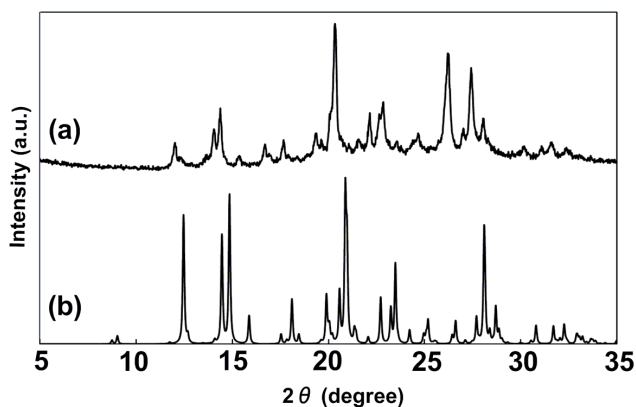
\*Corresponding author. (Y.I.) Tel.: +81 06 6730 5880x5241; fax: +81 06 6727 2024;  
e-mail: [y-imai@apch.kindai.ac.jp](mailto:y-imai@apch.kindai.ac.jp).



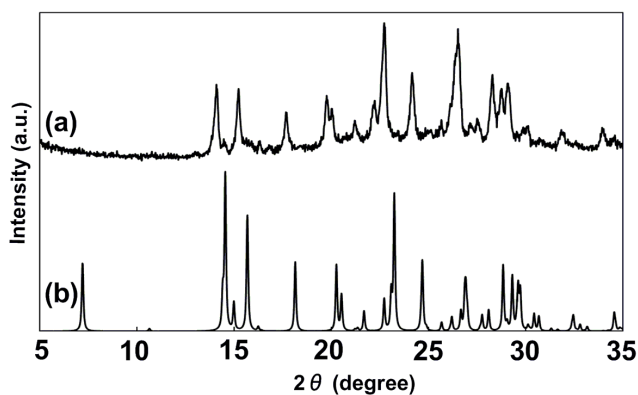
**Fig. ESI-1** (a) X-ray powder diffraction (XRPD) pattern of complex **3/BQ** obtained from solid co-grinding crystallization and (b) XRPD pattern of complex **3/BQ** from crystal structure data.



**Fig. ESI-2** (a) X-ray powder diffraction (XRPD) pattern of complex **2/2,5Me-BQ** obtained from solid co-grinding crystallization and (b) XRPD pattern of complex **2/2,5Me-BQ** from crystal structure data.



**Fig. ESI-3** (a) X-ray powder diffraction (XRPD) pattern of complex **3/2,5Me-BQ** obtained from solid co-grinding crystallization and (b) XRPD pattern of complex **3/2,5Me-BQ** from crystal structure data.



**Fig. ESI-4** (a) X-ray powder diffraction (XRPD) pattern of complex **2/2Cl-5Me-BQ** obtained from solid co-grinding crystallization and (b) XRPD pattern of complex **2/2Cl-5Me-BQ** from crystal structure data.