

Electronic supplementary Information (ESI) for “Large scale synthesis of ultralong aligned buckled multiwalled carbon nanotubes by one-step pyrolysis “

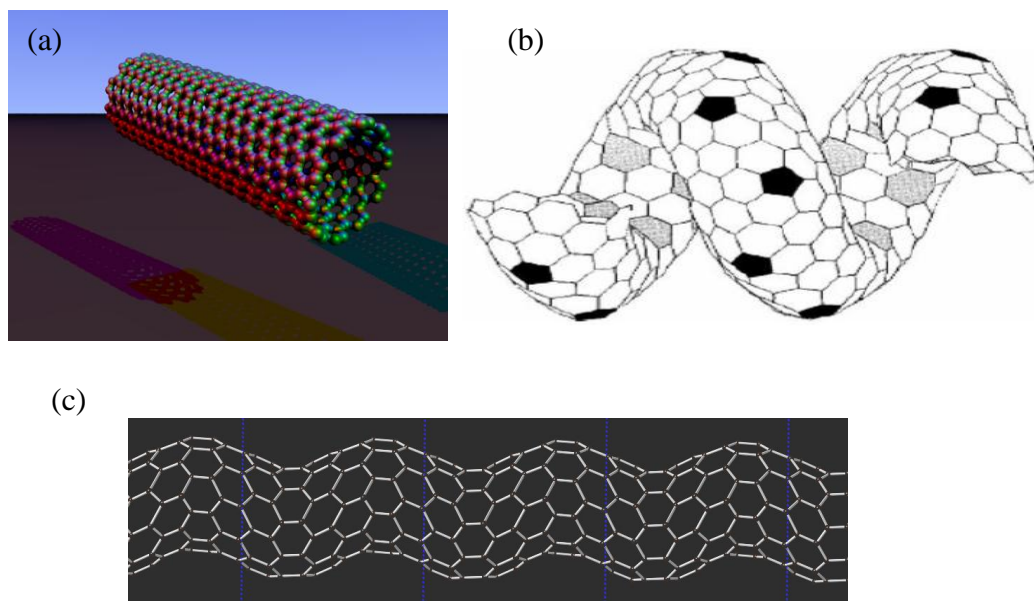


Fig. S1 Schematic of a (a) straight, (b) coiled, and (c) buckled single walled carbon nanotubes.

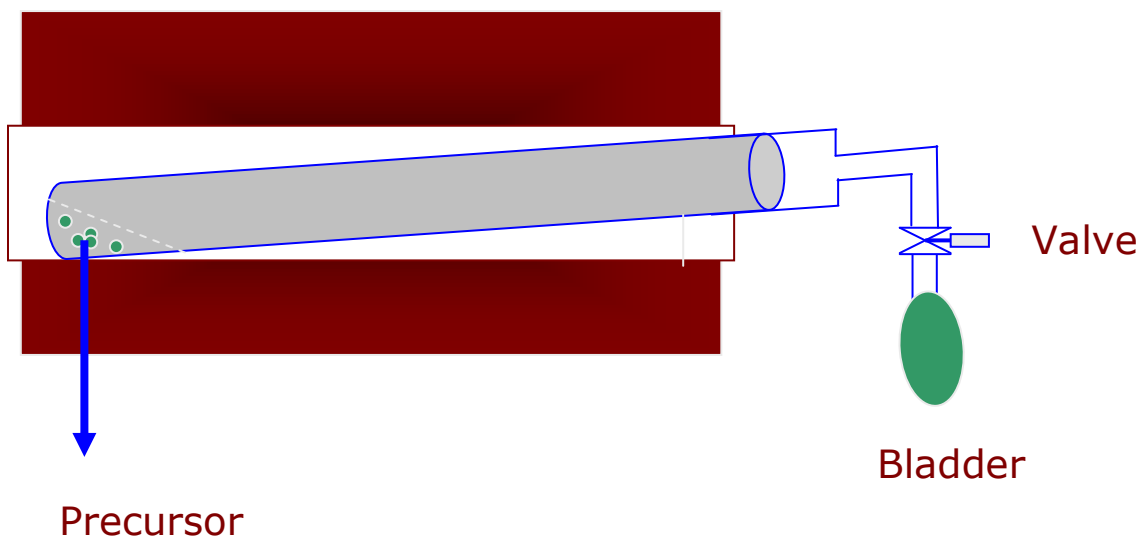


Fig. S2. Schematic of the experimental set up.

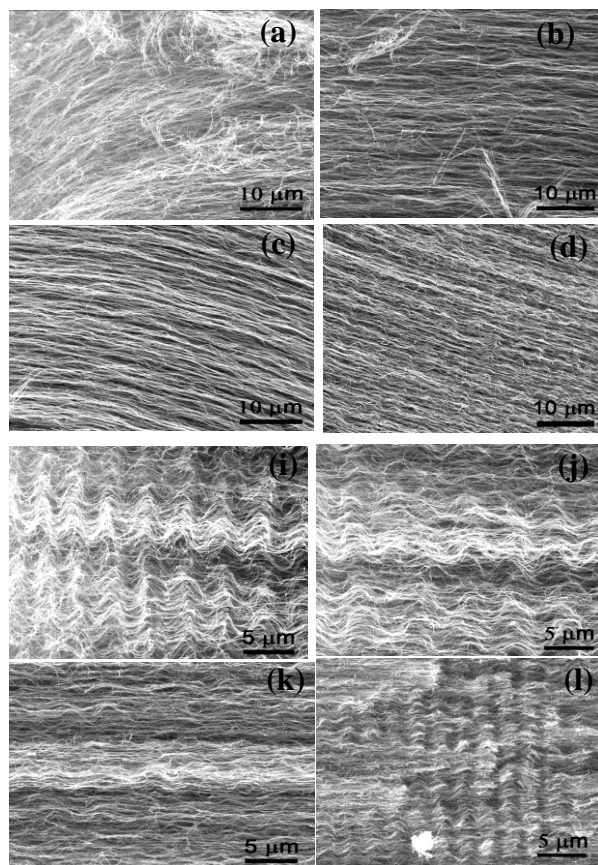


Fig. S3. BMWCNTs prepared with different concentrations of precursors.