

Supporting Information

Synthesis of polycrystalline cobalt selenide nanotubes and their catalytic and capacitive behaviors

Zhenghua Wang*, Qiang Sha, Fengwei Zhang, Jun Pu, Wu Zhang*

Anhui Key Laboratory of Functional Molecular Solids, College of Chemistry and

Materials Science, Anhui Normal University, Wuhu 241000, PR China

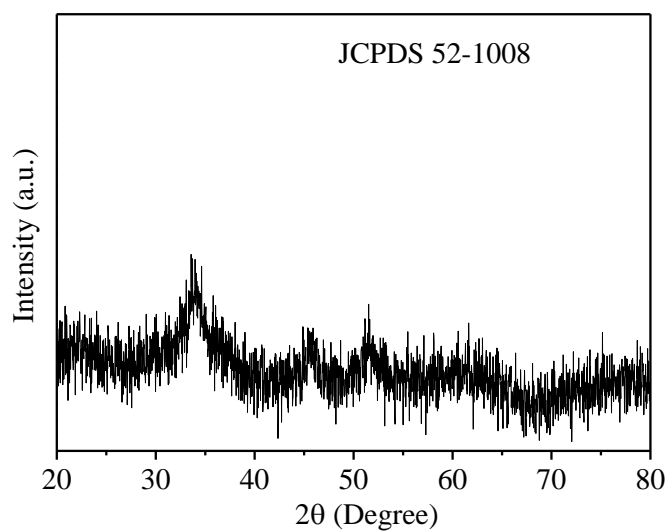


Fig. S1 XRD pattern of the Co_{0.85}Se nanoparticles.

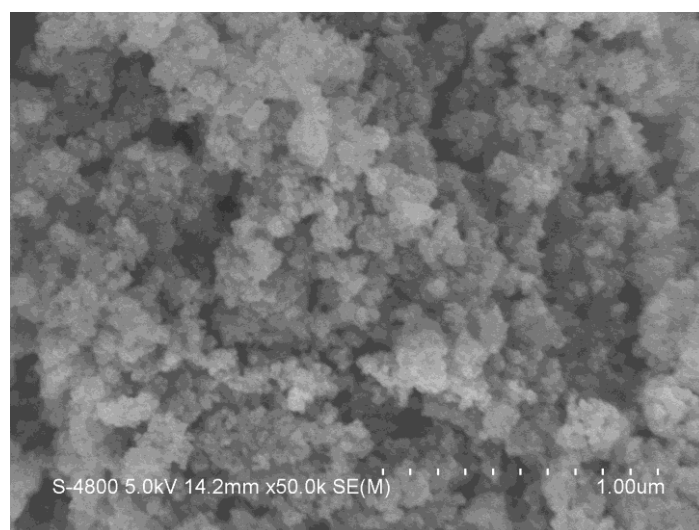


Fig. S2 FESEM image of the $\text{Co}_{0.85}\text{Se}$ nanoparticles.