

Supporting Information

High entropy alloy mediated growth of graphene

*Yih-Farn Kao⁺, Chia-I Hung⁺, Shih-Hsin Chang, Jien-Wei Yeh, and Wen-Kuang Hsu**

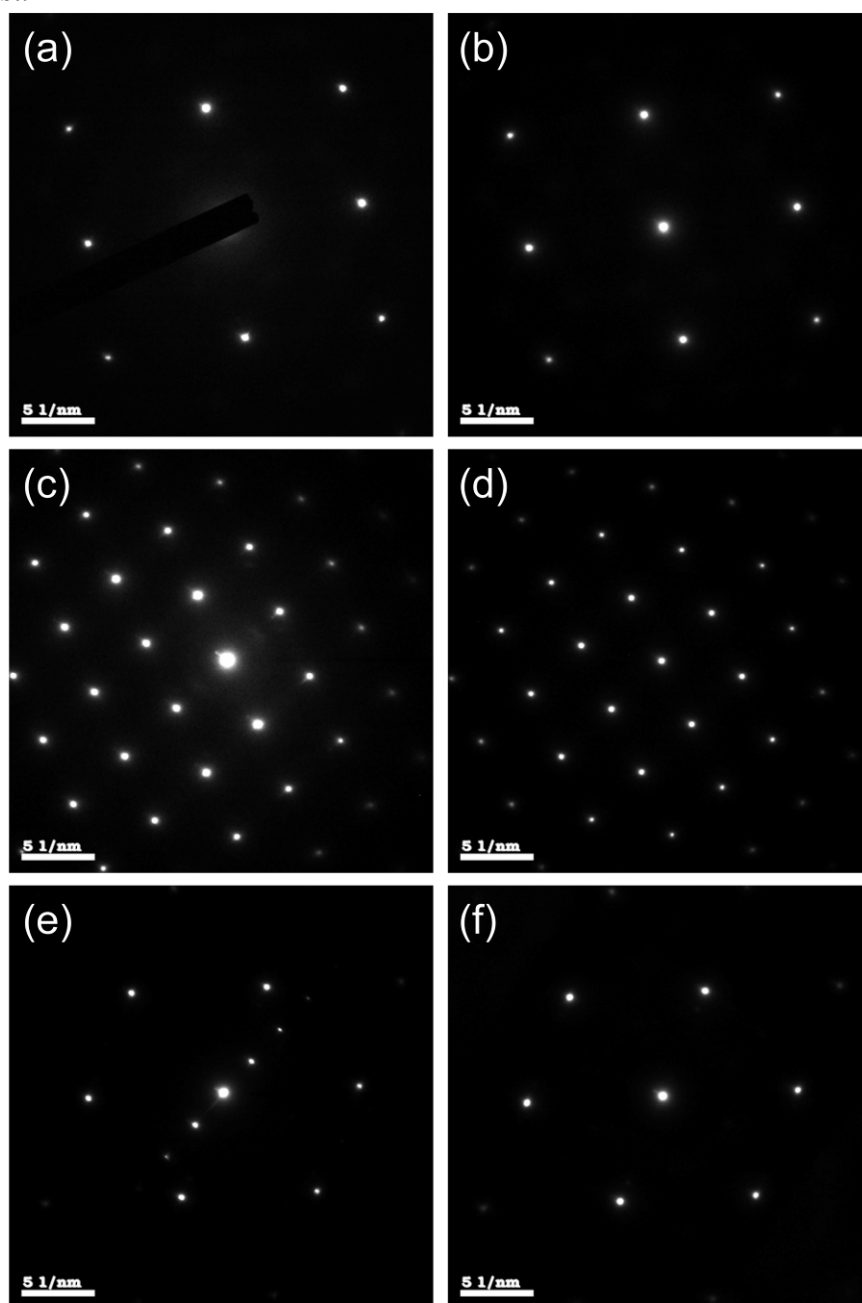


Figure S1. In-situ electron diffraction (ED) patterns. (a), (c), and (e) obtained from $G_{0.5}/S_{0.5}$, $G_{1.0}/S_{1.0}$, and $G_{1.5}/S_{1.5}$ interfaces while (b), (d), and (e) captured from $S_{0.5}$, $S_{1.0}$, and $S_{1.5}$ substrates.