

Supporting Information

Stephanie M. Taylor,^a Jamie M. Frost,^a Ross McLellan,^b Ruaraidh D. McIntosh,^b
Euan K. Brechin^{a*} and Scott J. Dalgarno^{b*}

- Additional figures relating to the magnetic data for **1**.

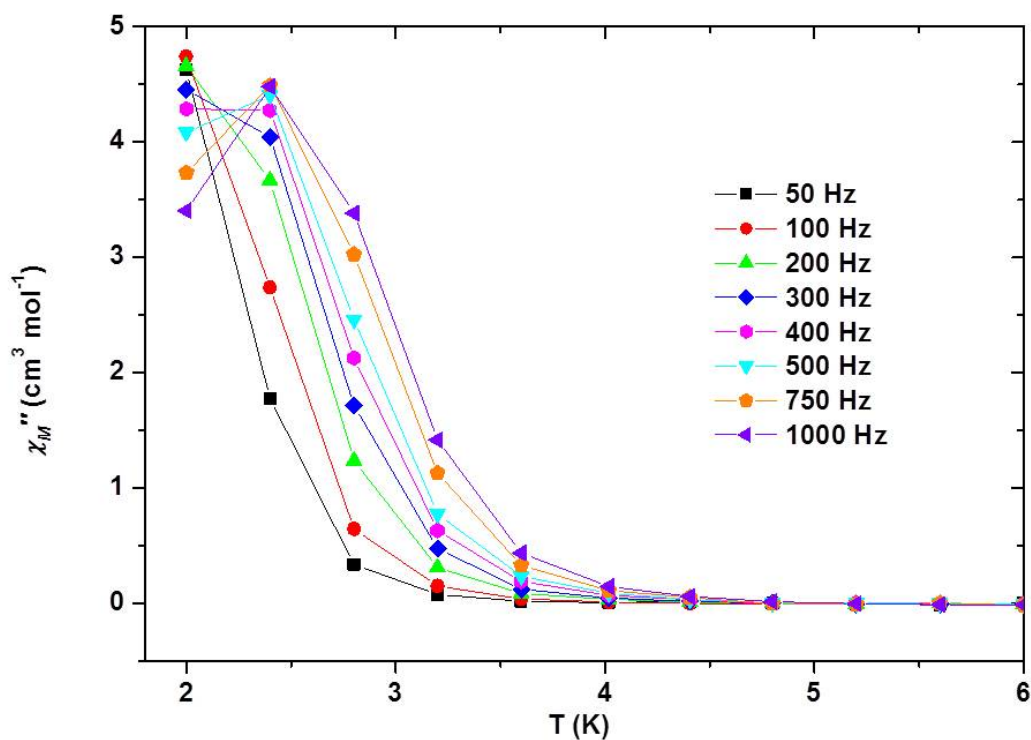


Figure S1. Out-of-phase ac susceptibility plot of χ_M'' versus T for complex **1** in the 2 – 6 K temperature range, and the indicated frequencies.

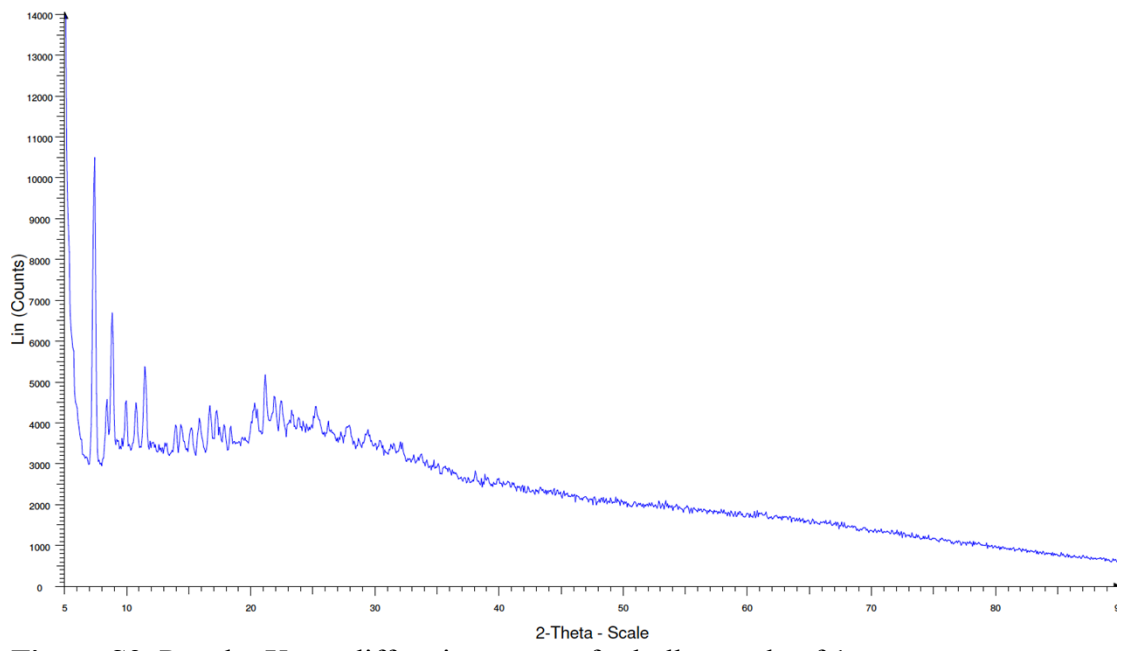


Figure S2. Powder X-ray diffraction pattern for bulk sample of **1**.