

Supporting Information

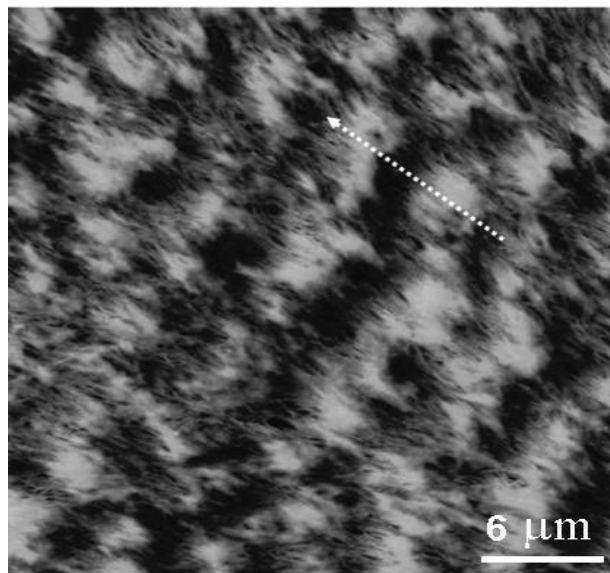


Figure S1 shows a large area room temperature scanned AFM height image of PEA banded spherulite crystallized at 27 °C. The average lamellar twisting period is measured to be ca. 5.42 μm. The arrow indicates the radial direction of the spherulite.

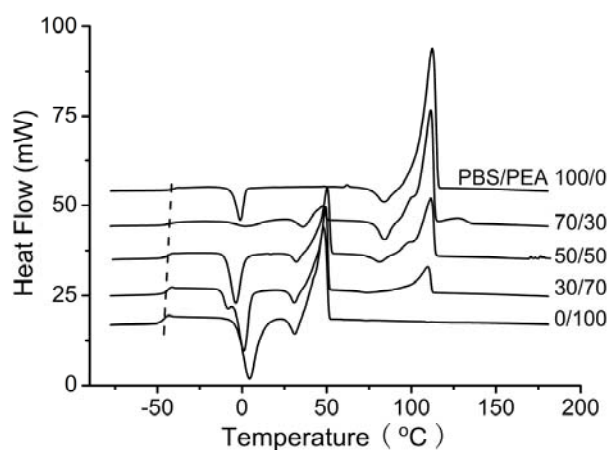


Figure S2 DSC curves of PBS/PEA blends with the component ration indicated in the right side. The samples were prepared by heating them to 180°C for 2.0 min, then cooled to -80°C at a rate of 500°C/min. The curves were obtained by heating the samples from -80°C to 180°C at 20°C/min.