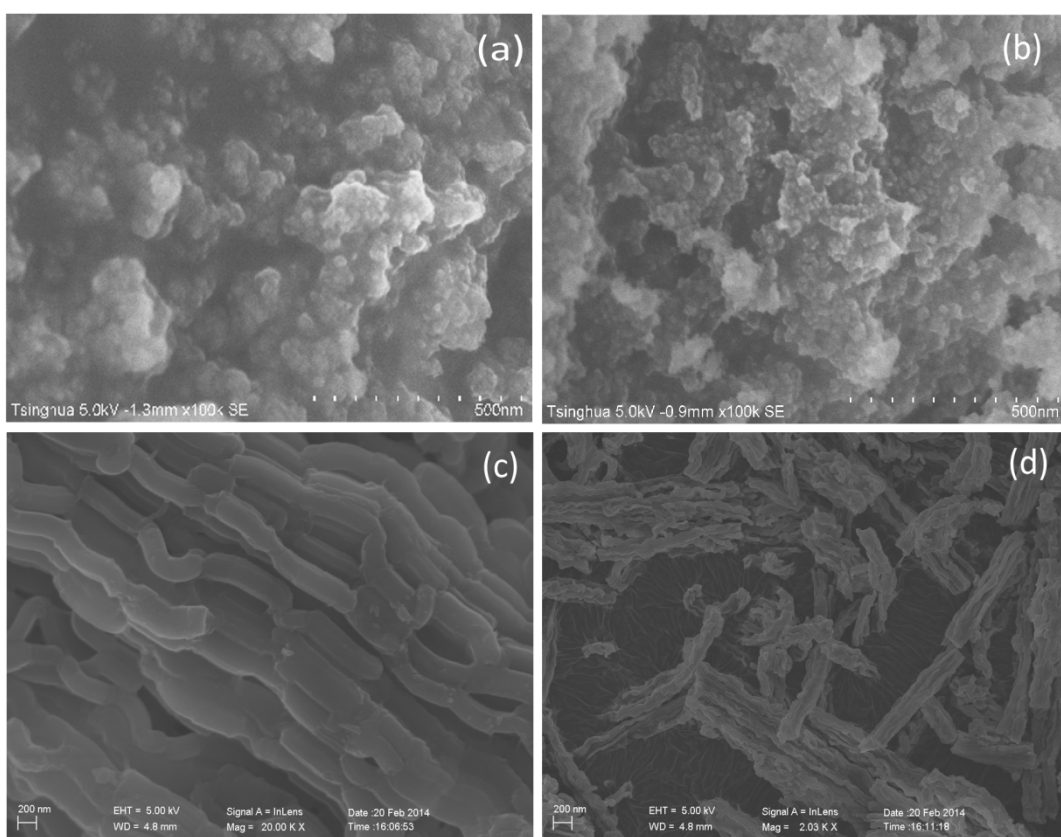


### Supporting Information

Table S1 The BET and porosity results of supports, fresh catalysts, and spent catalysts.

	Ni/SiO <sub>2</sub> -H			Ni/SBA-15			Ni/SiO <sub>2</sub> -P		
	S <sub>BET</sub> (m <sup>2</sup> /g)	PV (cm <sup>3</sup> /g)	PS (Å)	S <sub>BET</sub> (m <sup>2</sup> /g)	PV (cm <sup>3</sup> /g)	PS (Å)	S <sub>BET</sub> (m <sup>2</sup> /g)	PV (cm <sup>3</sup> /g)	PS (Å)
Support	243	0.63	105	434	0.49	42	337	1.28	152
Fresh	153	0.40	107	332	0.42	50	279	0.88	126
Spent	71	0.24	134	250	0.35	56	56	0.38	270

Notes: PV refers to pore volume and PS refers to average pore size.



**Figure S1.** SEM images of catalyst supports: (a) SiO<sub>2</sub>-H, (b) SiO<sub>2</sub>-P, (c) and (d) SBA-15.

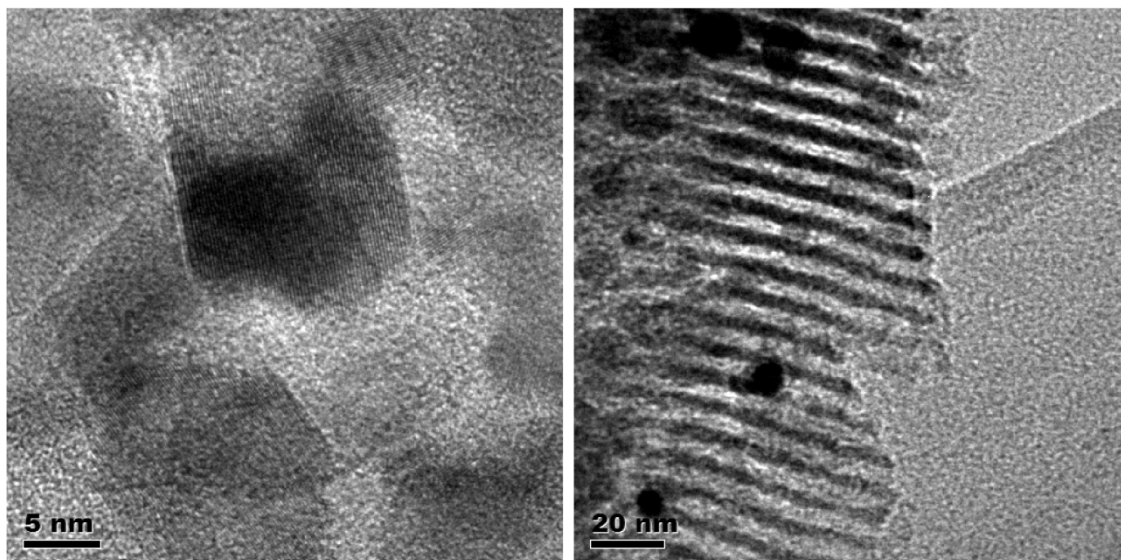


Figure S2 HR-TEM images of fresh catalysts: (left) Ni/SiO<sub>2</sub>-H and (right) Ni/SBA-15.

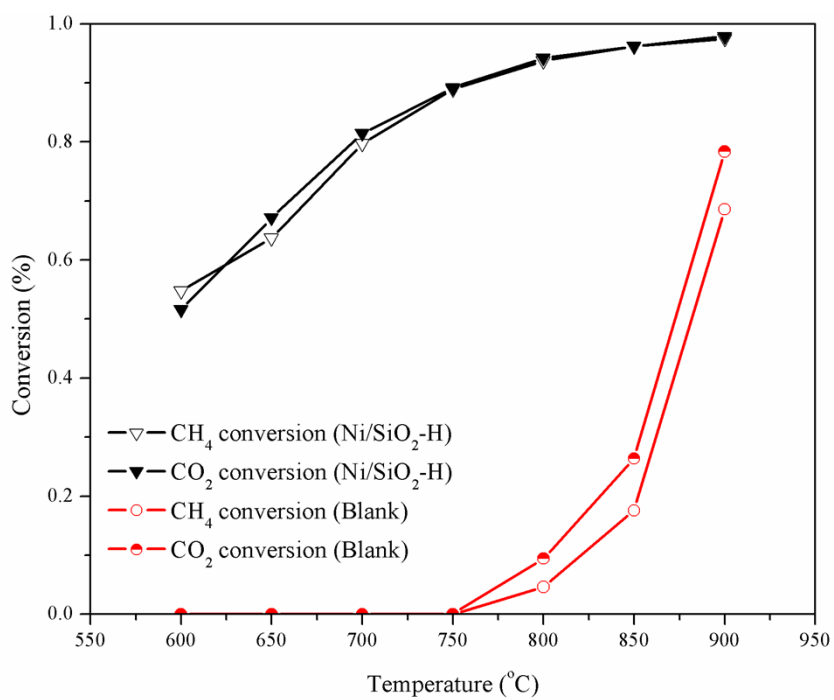


Figure S3. Compare of blank tests with Ni/SiO<sub>2</sub>-H catalyst at various temperatures.