

Supporting information for

An electroosmotic flow-free two-direction migration strategy enables fast affinity capillary electrophoresis to study weak interactions between basic peptides and RNA

Zheng Yuan,^{a,b} Peng Xu,^c Fangzhi Yu,^{a,b} Dapeng Zhang,^{a,b} Qiang Zhao,^{a,b} Wenqiang Yu,^c and Hailin Wang^{*a,b,d}

^a. The State Key Laboratory of Environmental Chemistry and Ecotoxicology, Research Center for Eco-Environmental Sciences, Chinese Academy of Sciences, Beijing, China.

^b. University of Chinese Academy of Sciences, Beijing, China.

^c. Shanghai Public Health Clinical Center and Department of General Surgery, Huashan Hospital, Cancer Metastasis Institute and Laboratory of RNA Epigenetics, Institutes of Biomedical Sciences, Shanghai Medical College, Fudan University, Shanghai, China.

^d. University of Jiangnan, Wuhan, Hubei, China.

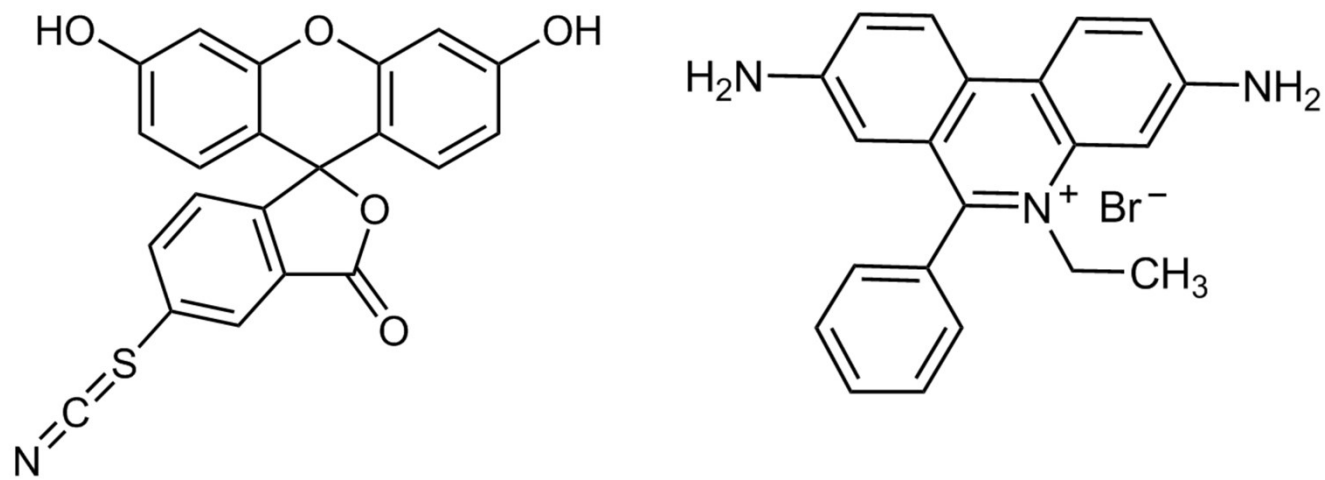


Figure S1. The structural scheme of FITC (left) and EB (right).

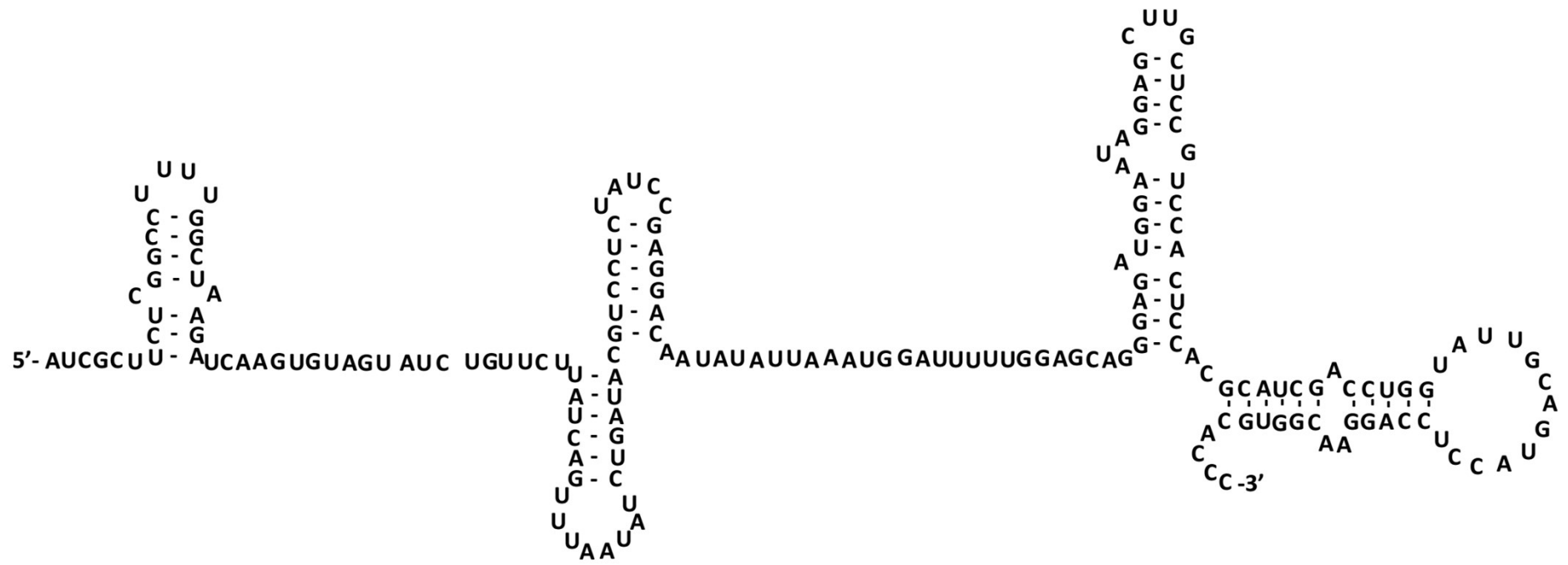


Figure S2. The structural scheme of snRNA U2.