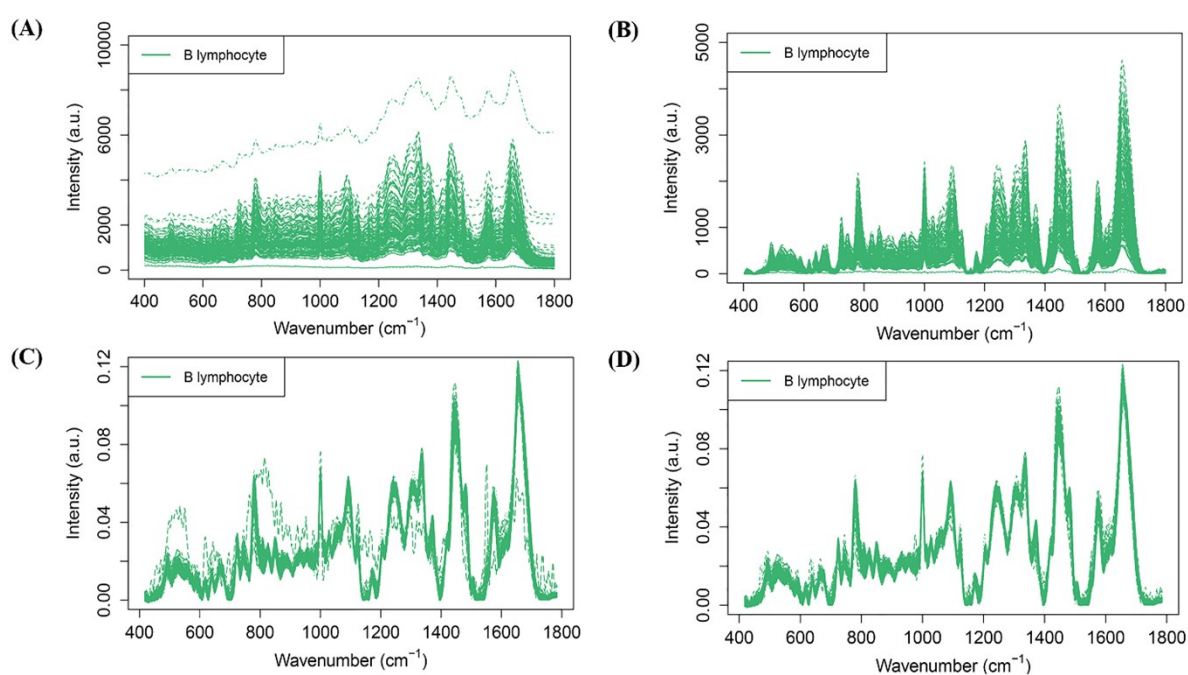


SUPPLEMENTARY FIGURES

S1. Pre-processing steps employed on the Raman spectra of B lymphocyte from healthy controls



Supplementary figure 1: Pre-processing steps employed on the Raman spectra of fifty B lymphocyte from healthy controls (n=3). (A) Smoothed Raman spectra using Savitzky-Golay filtration (B) Baseline correction of Raman spectra with polynomial and rubberband , (C) Vector normalization and (D) Grubb's test for removing outlying spectra