

## Supplementary material

### **A Toehold-Mediated Strand Displacement Cascade based DNA Assay Method via Flow Cytometry and Magnetic Separation**

Ju Ting <sup>1,2</sup>, Zhai Xingwei <sup>2,3</sup>, Liu Xinfeng <sup>1,2</sup> HAN Kun <sup>1,2\*</sup>

1.School of Biomedical Engineering (Suzhou), Division of Life Sciences and Medicine, University of Science and Technology of China, Hefei 230026, China

2.Suzhou Institute of Biomedical Engineering and Technology, Chinese Academy of Sciences, Suzhou 215163, P. R. China

3.Center for Molecular Recognition and Biosensing, School of Life Sciences, Shanghai University, Shanghai 200444, P. R. China

**\*Corresponding author:**

HAN Kun, Professor

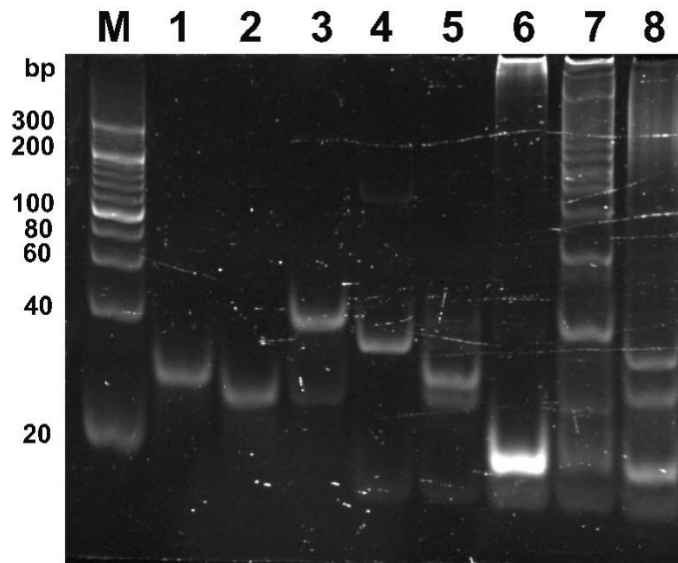
CAS Key Lab of Bio-Medical Diagnostics

Suzhou Institute of Biomedical Engineering and Technology, CAS

Suzhou, Jiangsu, 215163, P. R. China.

Tel.: +86-512-69588096

E-mail: hank@sibet.ac.cn



**Fig S1: Polyacrylamide gel electrophoresis (PAGE) analysis: Lane 1: IT-dsDNA; Lane 2: Target; Lane 3: IT-dsDNA+Target; Lane 4: Helper; Lane 5: IT-dsDNA+Target+Helper; Lane 6: H1+H2; Lane 7: IT-dsDNA+Target+Helper+H1+H2; Lane 8: IT-dsDNA+Helper+H1+H2. The final concentrations of IT-dsDNA, Target, Helper, H1 and H2 were 1  $\mu$ M each.**