

Supporting Information

Targeted near-infrared nanoprobe for deep-tissue penetration and imaging of prostate cancer

Mena Asha Krishnan,^a Kratika Yadav,^a Paul Roach,^{†c} Venkatesh Chelvam,^{†a,b}

- a) Department of Biosciences and Biomedical Engineering, Indian Institute of Technology Indore, Indore 453 552, India.
- b) Department of Chemistry, Indian Institute of Technology Indore, Indore 453 552, India.
- c) Department of Chemistry, University of Loughborough, Leicestershire LE11 3TU, United Kingdom

†To whom correspondence should be addressed.

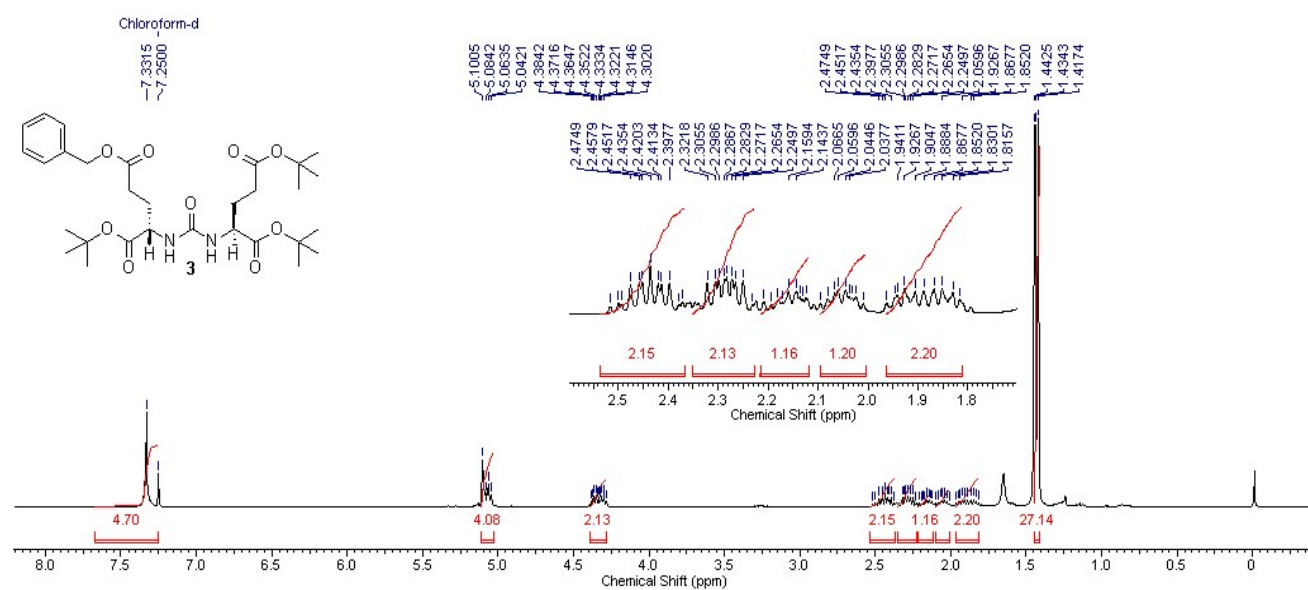
Dr. Venkatesh Chelvam,
Email ID: cvenkat@iiti.ac.in,
Phone: +91-731-6603343

Dr. Paul Roach,
Email ID: p.roach@lboro.ac.uk,
Phone: +44 (0) 1509 223 057

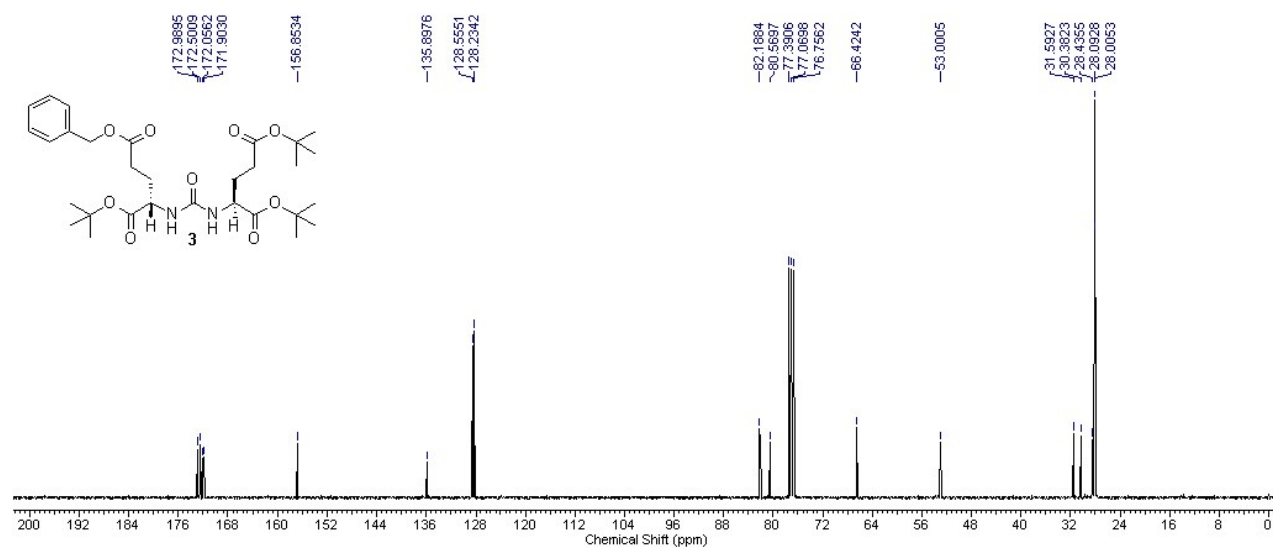
ELECTRONIC SUPPORTING INFORMATION

1.	¹ H NMR spectrum of 3	3
2.	¹³ C NMR spectrum of 3	4
3.	¹ H NMR spectrum of 4	5
4.	¹³ C NMR spectrum of 4	6
5.	High Resolution Mass Spectrometry data for DUPA-SH linker 11	7
6.	Analytical LC data of DUPA-SH linker 11	8
7.	Hydrodynamic radius of QD655 and PSMA-QD655	9
8.	Particle characterization data of QD655 and PSMA-QD655	10
9.	Cytotoxicity study of PSMA-QD655 after 12 h treatment	11
10.	Flow cytometry analysis of LNCaP spheroid co-labelled with fluorescein diacetate (FDA) and propidium iodide (PI) stain.	12

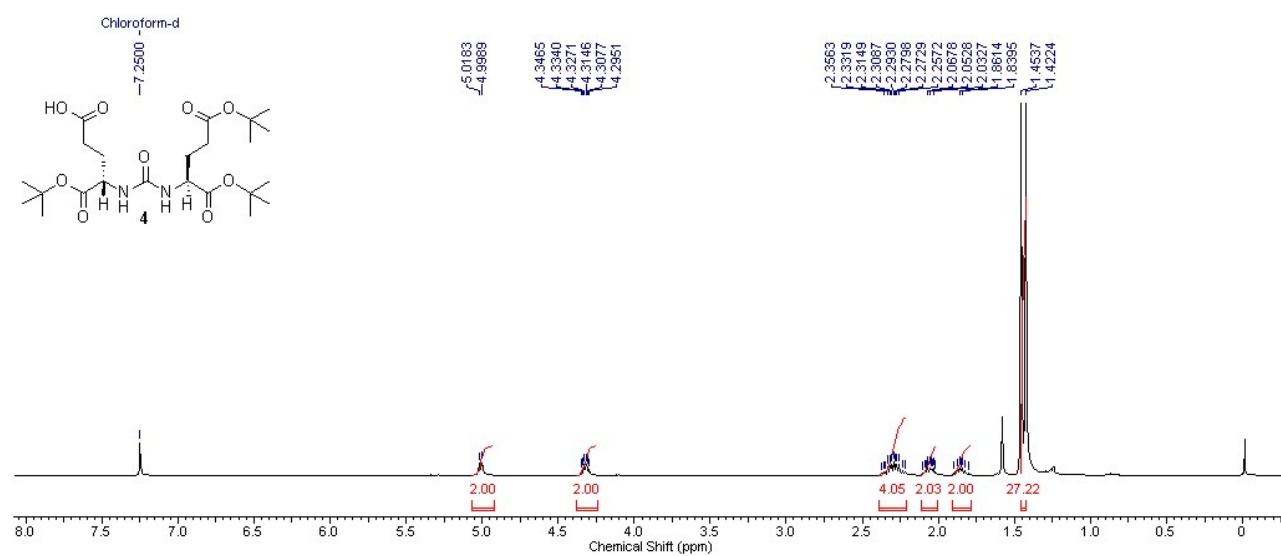
¹H NMR spectrum of 3



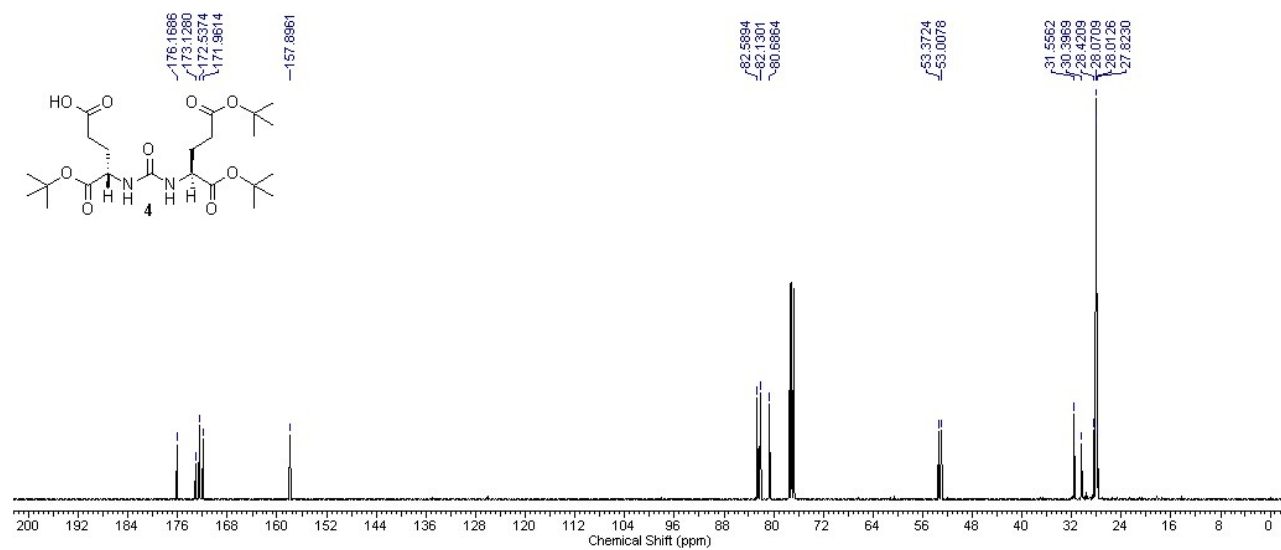
¹³C NMR spectrum of 3



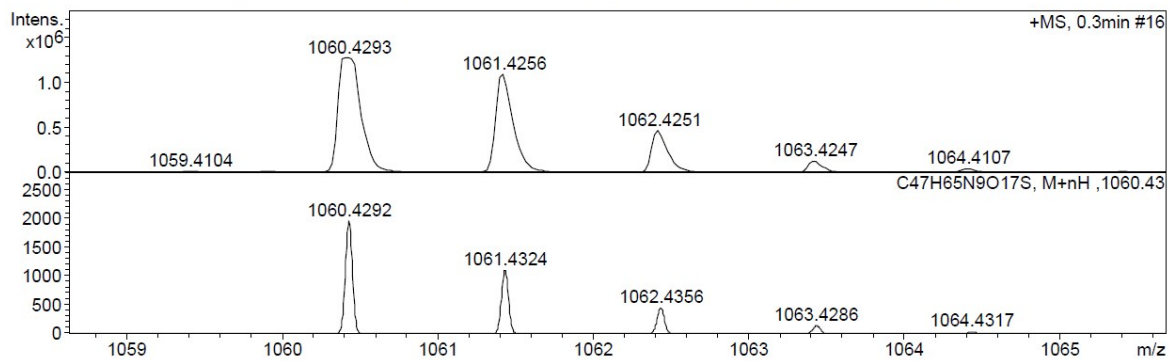
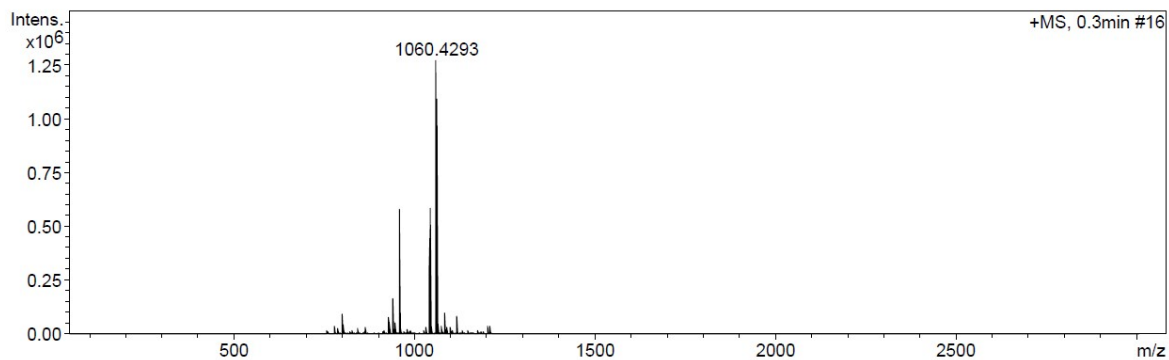
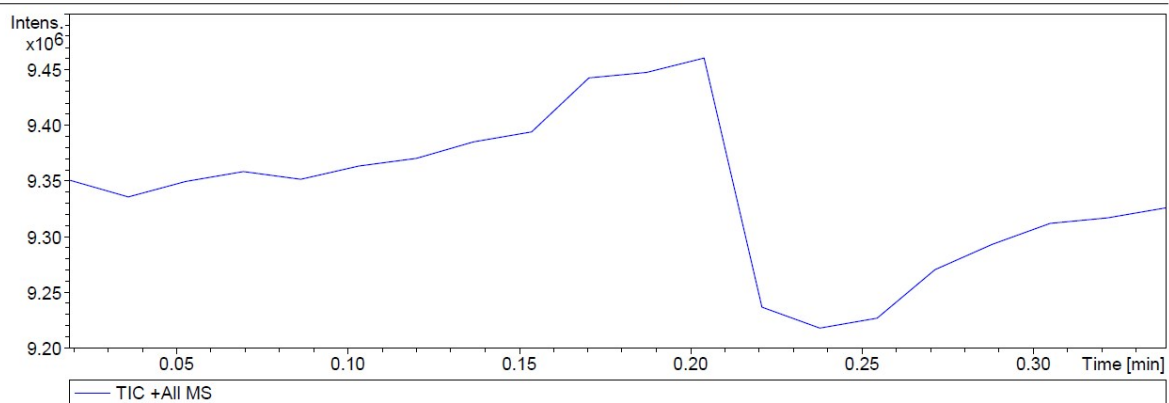
¹H NMR spectrum of 4



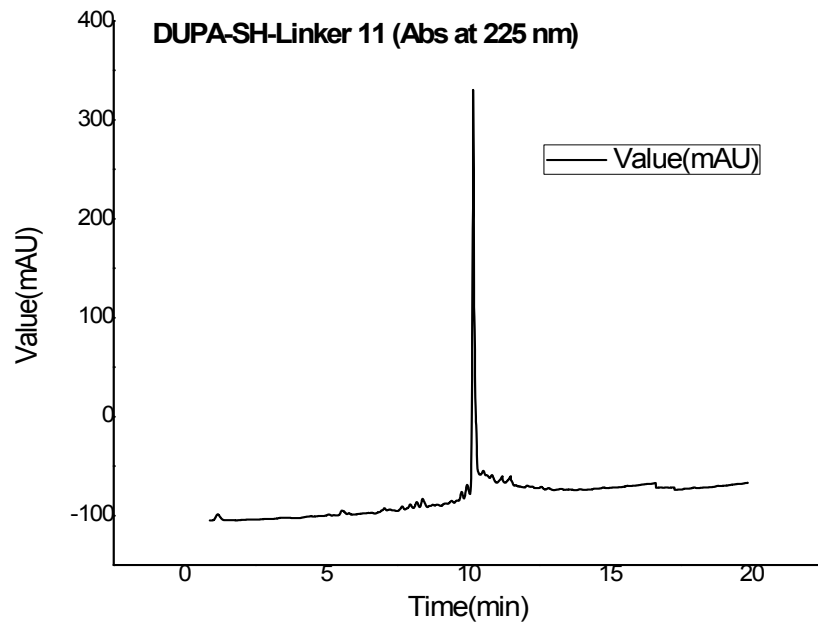
¹³C NMR spectrum of 4



High resolution mass spectrometry data DUPA-SH Linker 11



Analytical LC data of DUPA-SH linker 11



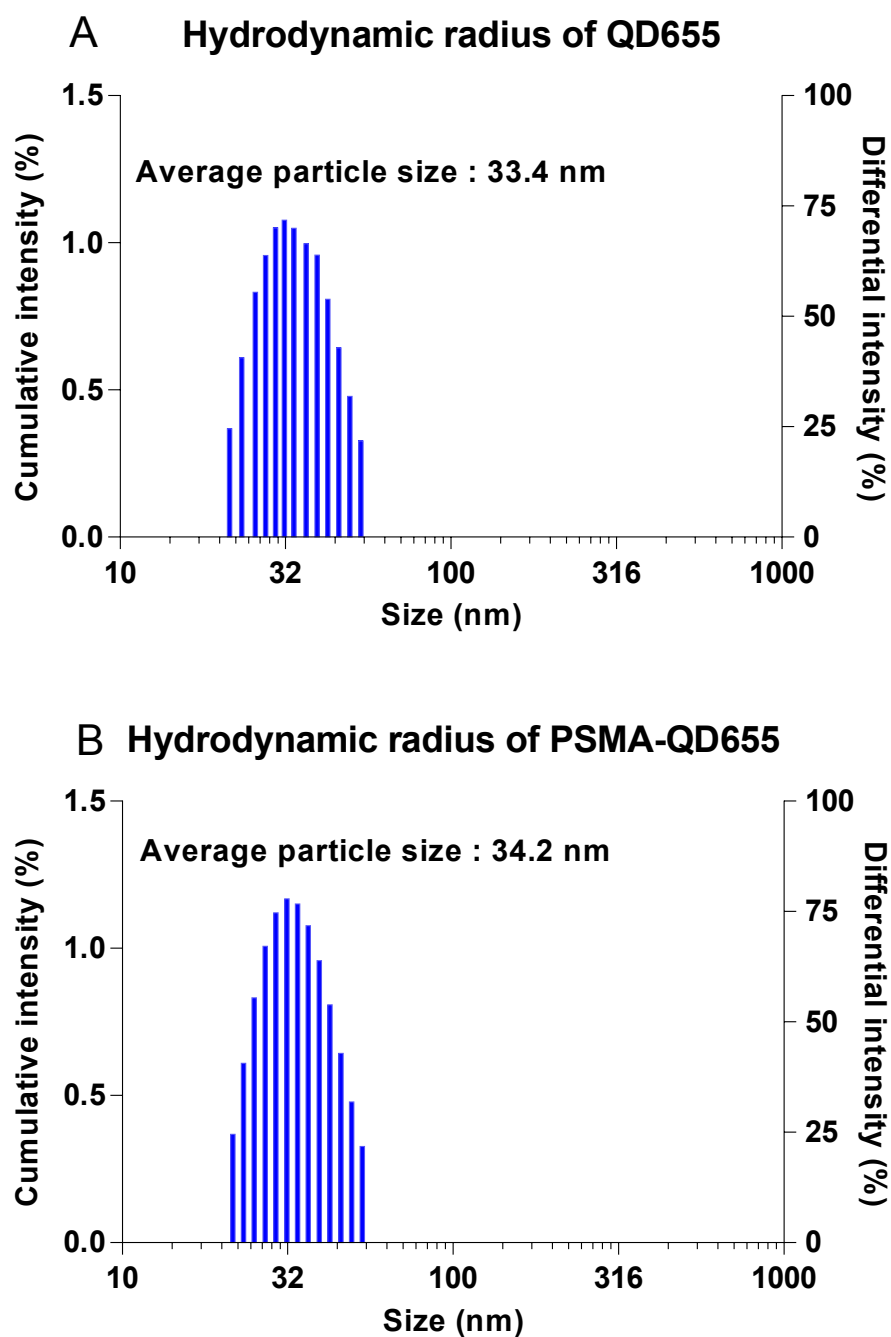


Fig F1. Characterization of PSMA-QD655 nanoparticles. Hydrodynamic radius value of (A) QD655 (B) and PSMA-QD655.

Table 1. Particle characterization data of QD655 and PSMA-QD655

Nanoparticle	Average particle size (nm)	Zeta potential (mV)
QD655	33.4	-2.1133 ± 0.308
PSMA-QD655	34.2	-1.3567 ± 0.128

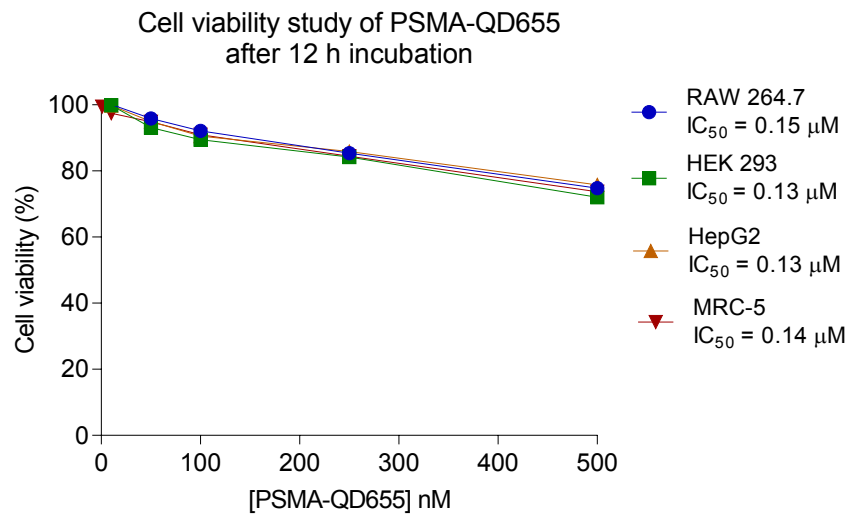


Fig. F2. Cytotoxicity study of PSMA-QD655 in RAW 264.7, HEK 293, HepG2 and MRC-5 cell for 12 h incubation

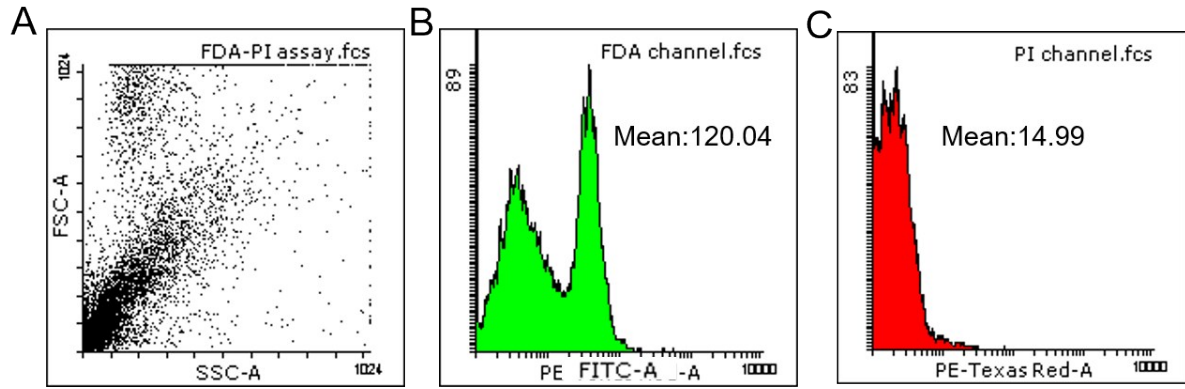


Fig. F3. Flow cytometry analysis of LNCaP spheroid co-labelled with fluorescein diacetate (FDA) and propidium iodide (PI) stain. (A) Dot plot of LNCaP cells. (B) Histogram of cells stained with FDA showing MFI measured in FITC-A channel. (C) Histogram of cells stained with PI showing MFI measured in PE-Texas-Red-A channel.