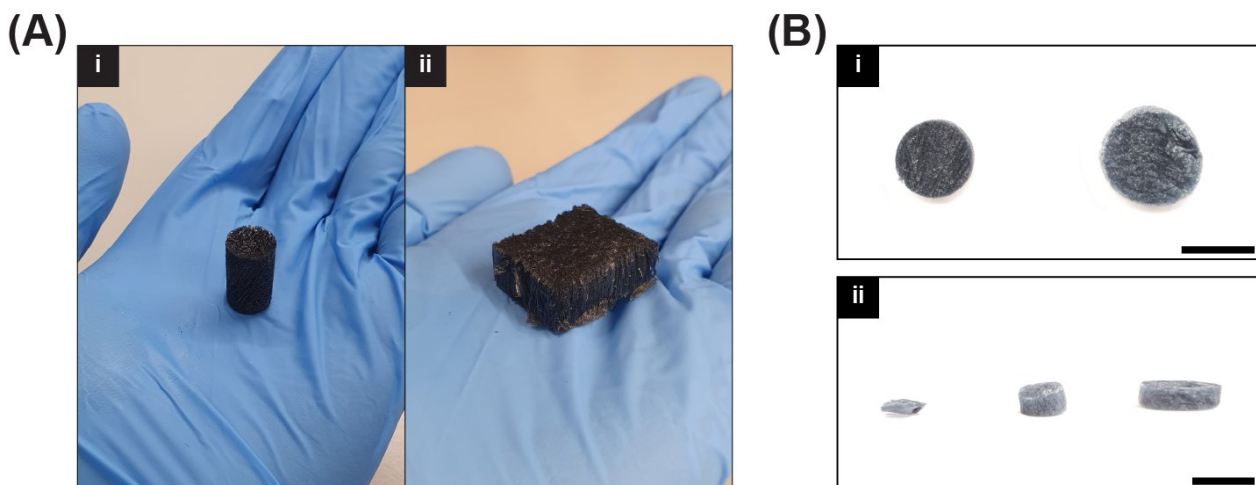
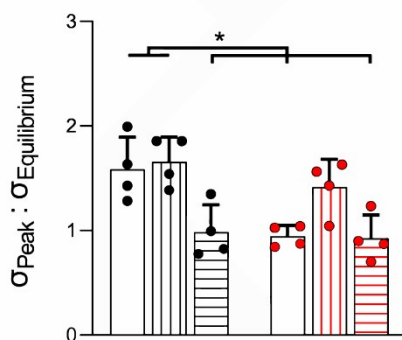
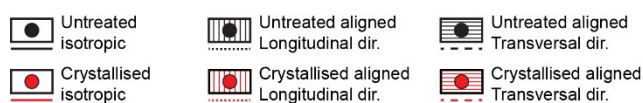


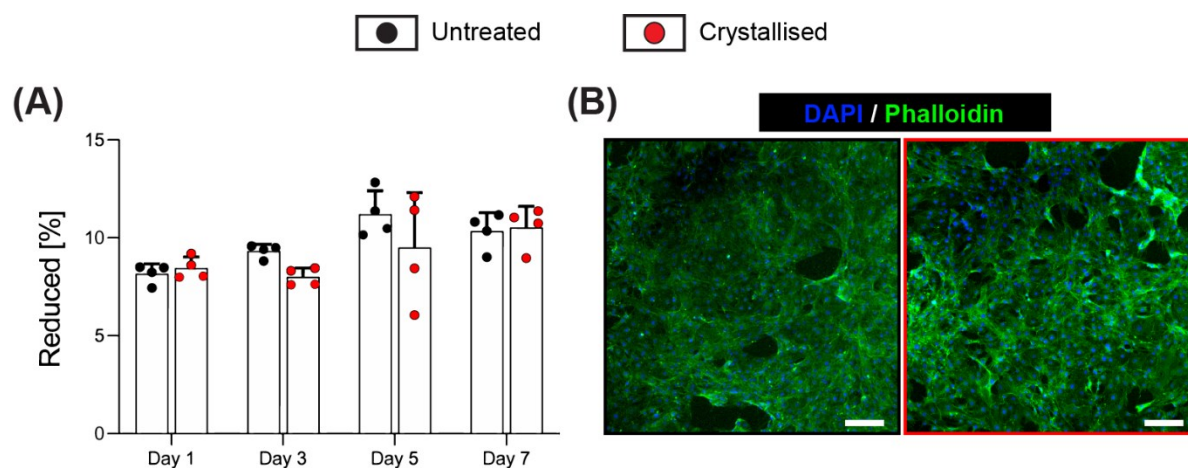
## Electronic supplementary information (ESI)



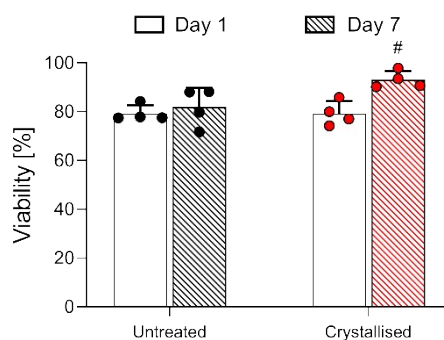
**Supporting Information 1.** (A) Overview of scaffolds with an isotropic cylindrical conformation (left) and an aligned rectangular one (right). (B i) Evidence of volumetric expansion following sulfuric acid crystallization with an untreated sample (left) compared to a crystallized one (right). (B ii) Scalability of the combined freeze-drying and crystallization process, represented by a range of specimens: 8 mm diameter and 500 μm thickness (left), 8 mm diameter and 3 mm thickness (middle), 14 mm diameter and 3 mm thickness (right). Scale bars: B = 1 cm.



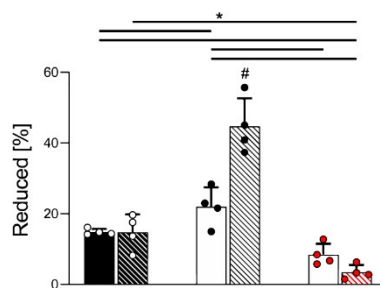
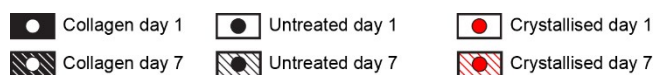
**Supporting Information 2.** Peak stress to Equilibrium stress ratio (n=4). Bar graphs demonstrate the mean with error bars representing standard deviation. Data values are presented as associated points. \* represents statistical significance (p<0.05) between indicated groups using two-way ANOVA with Tukey's post-hoc test.



**Supporting Information 3.** Cytocompatibility of scaffolds on C3H10 cells via indirect contact. After the first 24 hours, growth media was replaced with extraction media for more 24 hours. **(A)** AlamarBlue™ assay performed with extraction media. Intensity being normalized to samples that were in contact with standard growth media only (n=4). **(B)** Fluorescent staining for nuclei/f-actin (DAPI and Phalloidin respectively) of day 7 groups. Scale bars: B = 100  $\mu\text{m}$ . Bar graphs demonstrate the mean with error bars representing standard deviation. Data values are presented as associated points.



**Supporting Information 4.** Quantification of viability (extracted from Live/Dead Staining) at days 1 and 7, quantified as alive cells density (n=4). Bar graphs demonstrate the mean with error bars representing standard deviation. Data values are presented as associated points. # represent statistical significance (p < 0.05) with all other groups using two-way ANOVA with Tukey's post-hoc test.



**Supporting Information 5.** AlamarBlue™ assay performed on scaffolds (n=4). Bar graphs demonstrate the mean with error bars representing standard deviation. Data values are presented as associated points. \* represent statistical significance ( $p < 0.05$ ) with all other groups using two-way ANOVA with Tukey's post-hoc test.