

Growth behavior and influence factors of three-dimensional hierarchical flower-like $\text{FeF}_3 \cdot 0.33\text{H}_2\text{O}$

Shuyi Chen, Qing Shi, Jinfang Lin, Zijian Cai, Linshen Cao, Licai Zhu,* and Zhongzhi Yuan*

School of Chemistry, South China Normal University, Guangzhou 510006, China

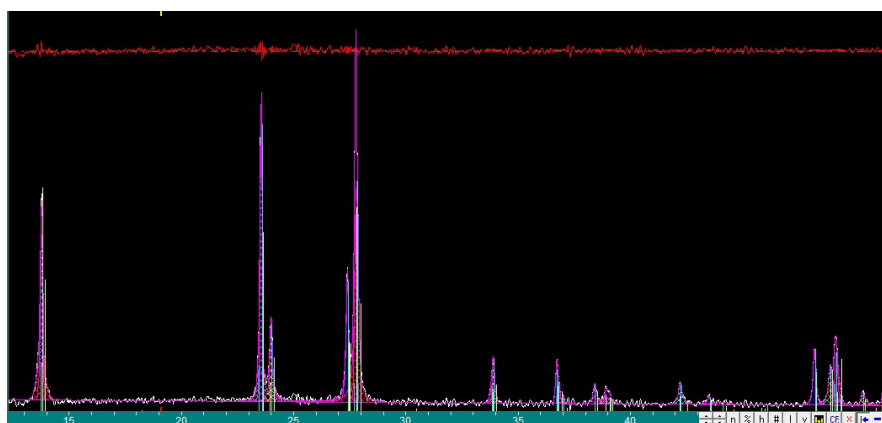


Fig. S1 The calculated value of the crystallinity of the sample with a water-alcohol ratio of 0:1 is 84.26%.

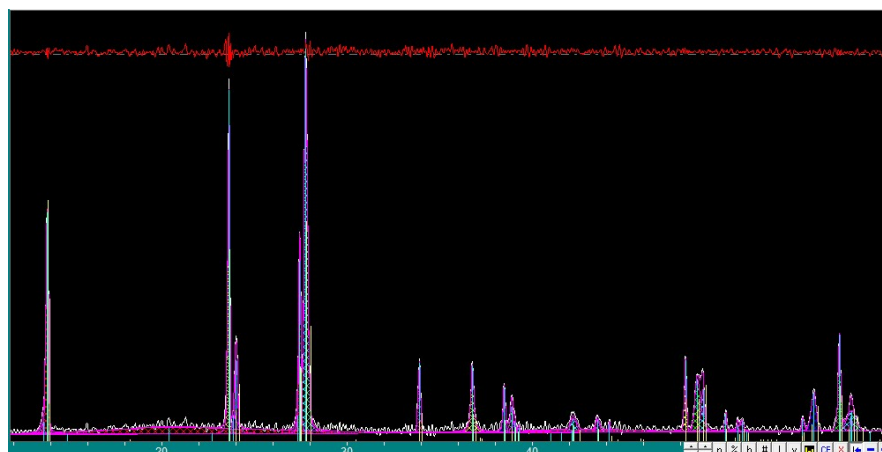


Fig. S2 The calculated value of the crystallinity of the sample with a water-alcohol ratio of 1: 7 is 61.05%.

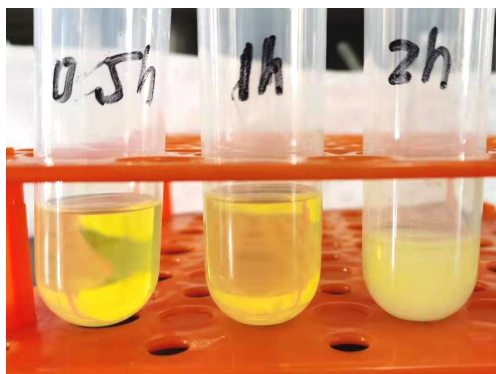


Fig. S3 A image of the undried sample obtained with a reaction time of 0.5-2 h.

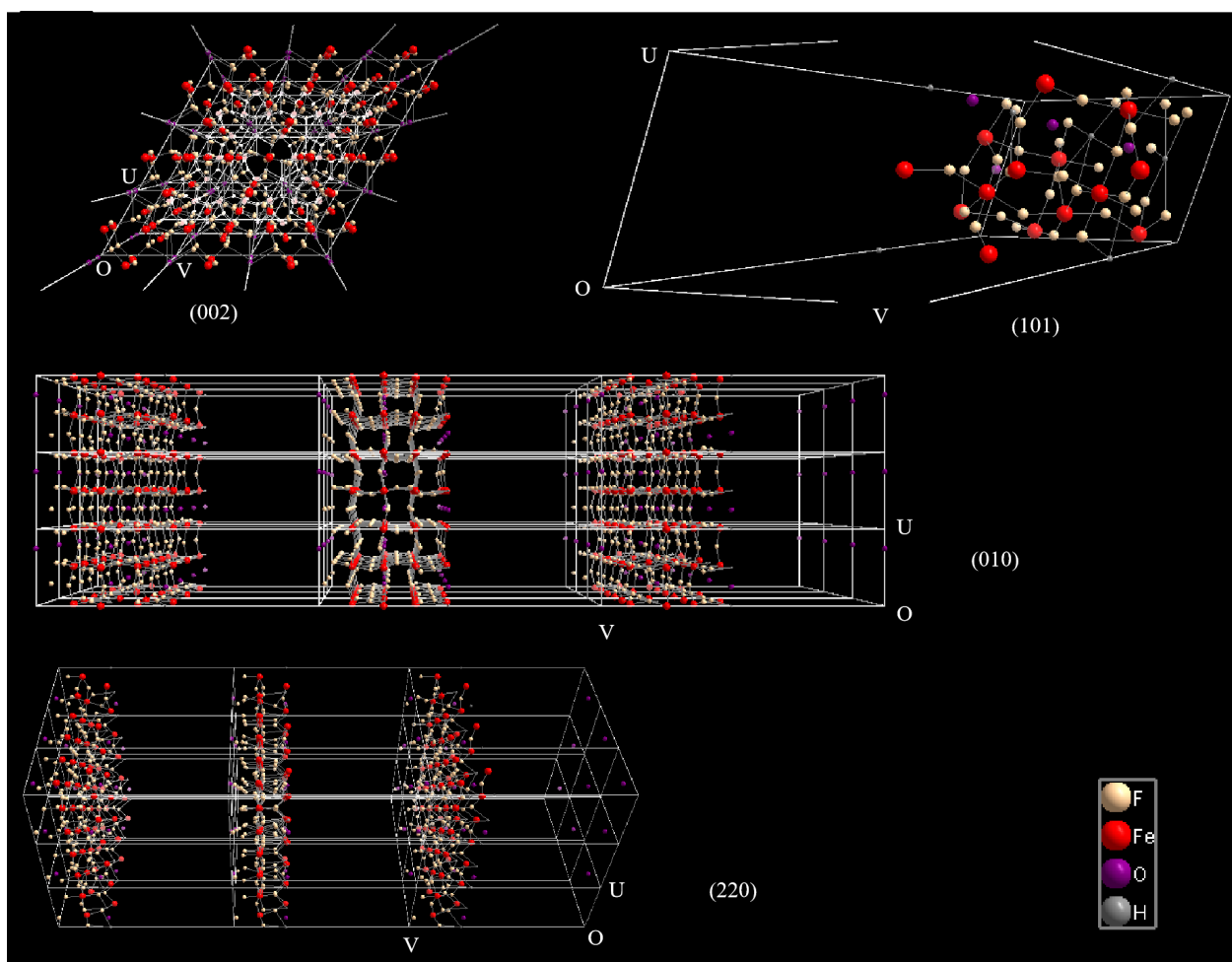


Fig. S4 Crystal structures of some low-index planes of $\text{FeF}_3 \cdot 0.33\text{H}_2\text{O}$.