

SUPPLEMENTARY MATERIALS

Antioxidant and pro-apoptotic activities of purple potato extract and its interaction with liposomes, albumin and plasmid DNA

Paulina Strugała,^{*a} Anna Urbaniak,^{b,c} Patryk Kuryś,^a Aleksandra Włoch,^a Teresa Kral,^{a,d} Maciej Ugorski,^c Martin Hof,^d and Janina Gabrielska^a

^aDepartment of Physics and Biophysics, Wrocław University of Environmental and Life Sciences, C. K. Norwida 25, 50-375 Wrocław, Poland. E-mail: paulina.strugala@upwr.edu.pl

^bLaboratory of Glycobiology, Ludwik Hirszfeld Institute of Immunology and Experimental Therapy, Polish Academy of Sciences, Rudolfa Weigla 12, 53-114 Wrocław, Poland

^cDepartment of Biochemistry and Molecular Biology, Faculty of Veterinary Medicine, Wrocław University of Environmental and Life Sciences, C. K. Norwida 31, 50-375, Wrocław, Poland

^dDepartment of Biophysical Chemistry, J. Heyrovsky Institute of Physical Chemistry of the Czech Academy of Sciences, Dolejskova 3, 18223 Prague 8, Czech Republic

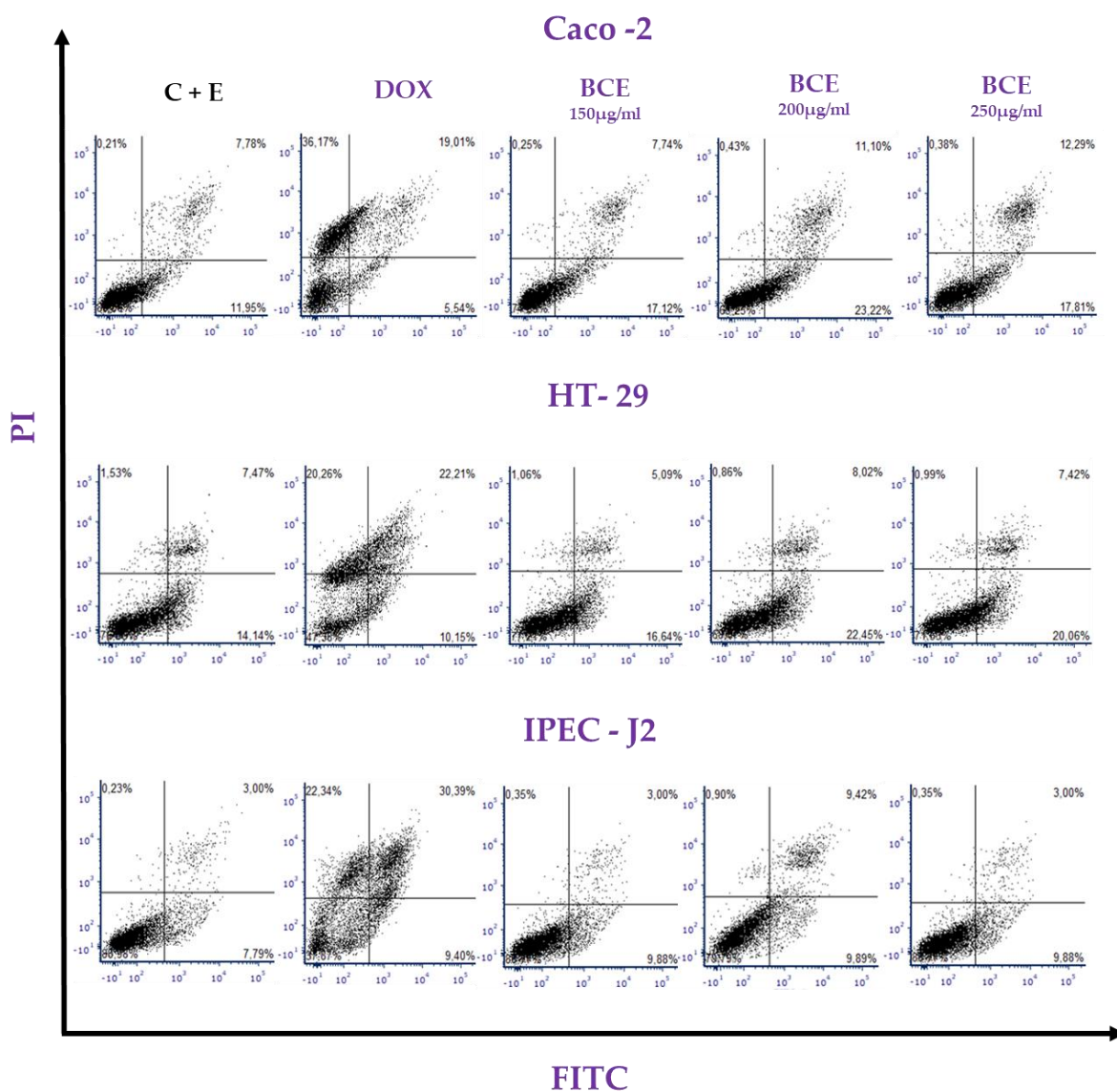


Fig. S1 Sensitivity of Caco-2 cells, HT-29 cells and IPEC-J2 cells treated with 150, 200 and 250 µg/ml of Blue Congo Extract (BCE) or 4 µM doxorubicin (DOX) to apoptosis. Cellular response measured by staining with Annexin V and propidium iodide (PI). Flow cytometry dot plots show percentage of early apoptotic cells (Annexin V⁺, lower right), late apoptotic cells (Annexin V⁺/PI⁺, upper right) and necrotic cells (Annexin V⁻, PI⁺, left right) . Data are represented as mean ± SD (n = 4). Statistically significant differences (**p*<0,05, ***p*<0.01, ****p*<0.001). Control C + E – cells growing in complete medium and 50% ethanol.