

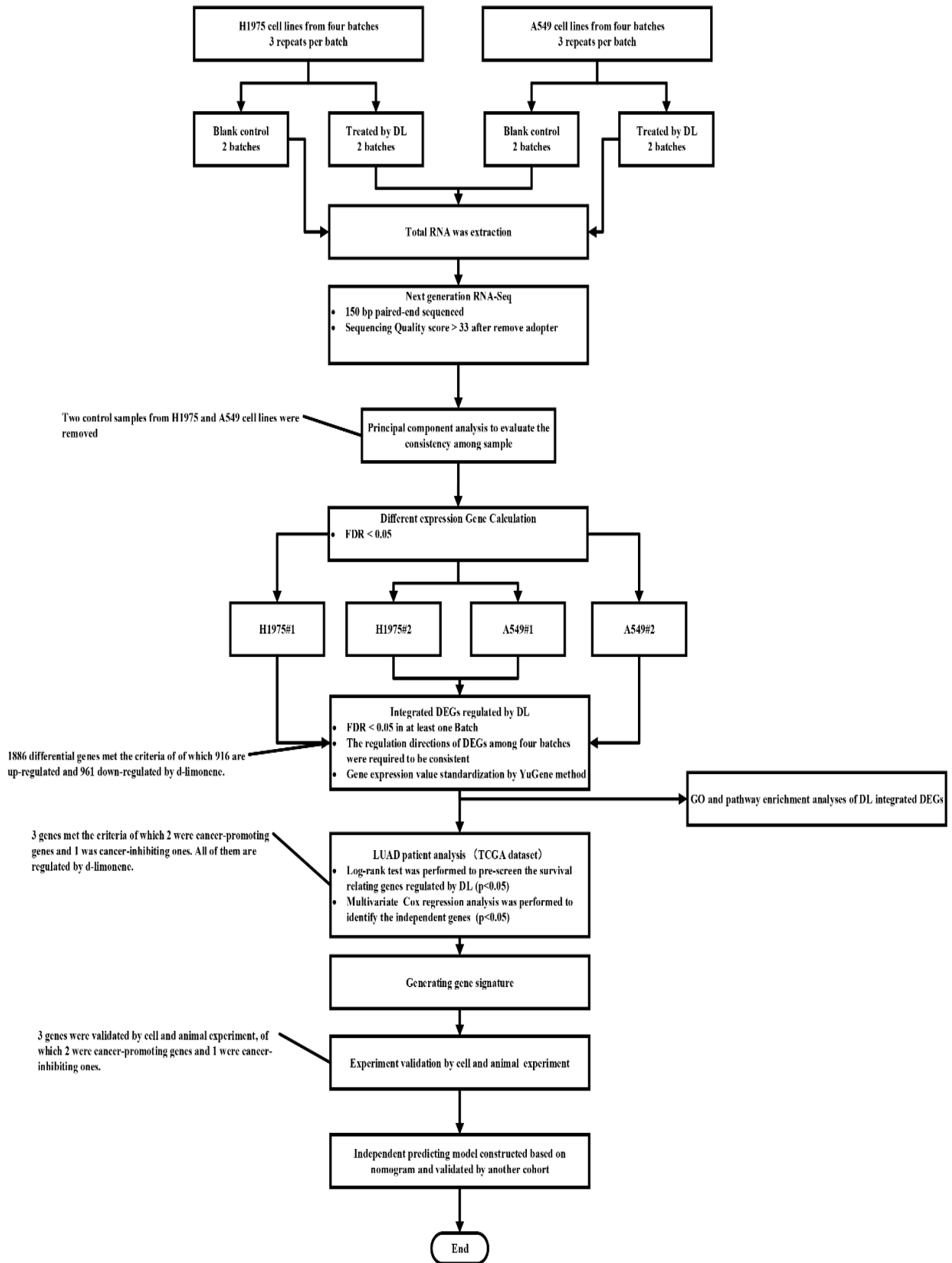
## **Stratification of lung adenocarcinoma patients for d-lemonime intervention based on the expression signature genes**

Tengteng Zhu, ‡<sup>a</sup> Qiang Li, ‡<sup>b</sup> Limin Xu, <sup>c</sup> Qi Zhang, <sup>a</sup> Wenwen Lv, <sup>a</sup> Herbert Yu, <sup>d</sup> Tienan Feng, <sup>\*a, e</sup> and  
Biyun Qian<sup>\*a, f</sup>

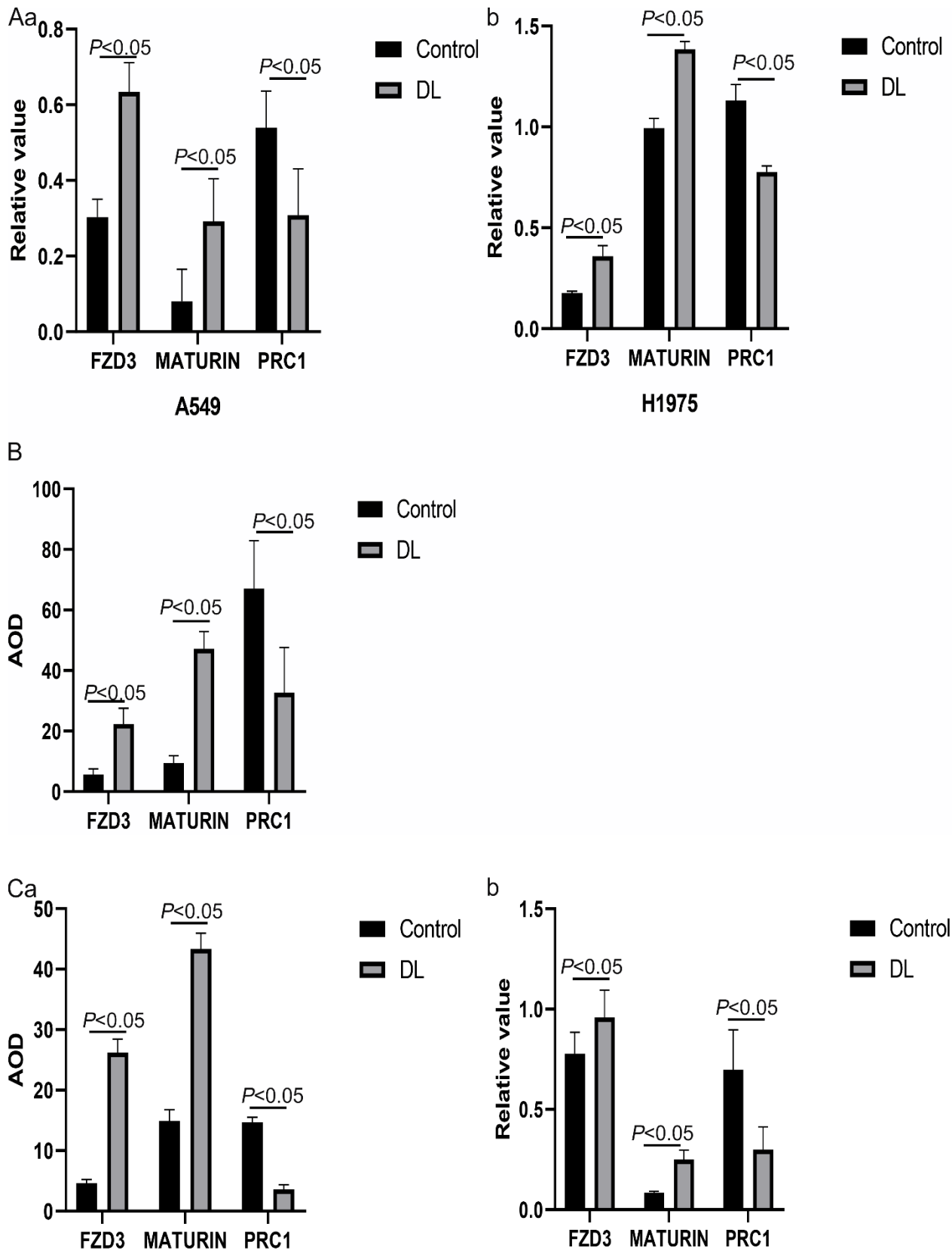
### **A table of contents**

**Figure S1** Flow chart of construction and validation of d-limonene signature gene.

**Figure S2** Comparison of FZD3, MATURIN, PRC1 mRNA and protein level. A: Comparison of A549 and H1975 cell experiment which were compared by t-test; B: Immunohistochemical staining results of urethane induced mice which were compared by t-test; C: Immunohistochemical staining and western blot results of xenograft mice which were compared by t-test.



**Figure S1.** Flow chart of construction and validation of d-limonene signature gene.



**Figure S2.** Comparison of FZD3, MATURIN, PRC1 mRNA and protein level. A: Comparison of A549 and H1975 cell experiment which were compared by t-test; B: Immunohistochemical staining results of urethane induced mice which were compared by t-test; C: Immunohistochemical staining and western blot results of xenograft mice which were compared by t-test.