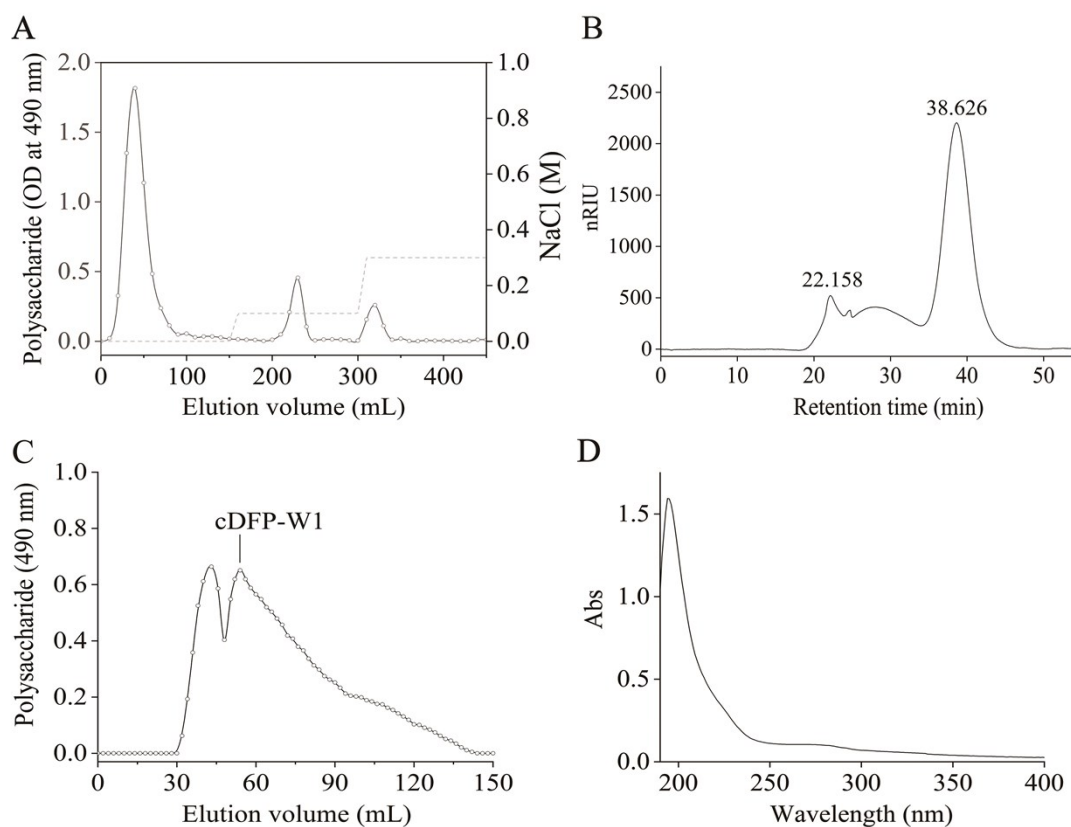
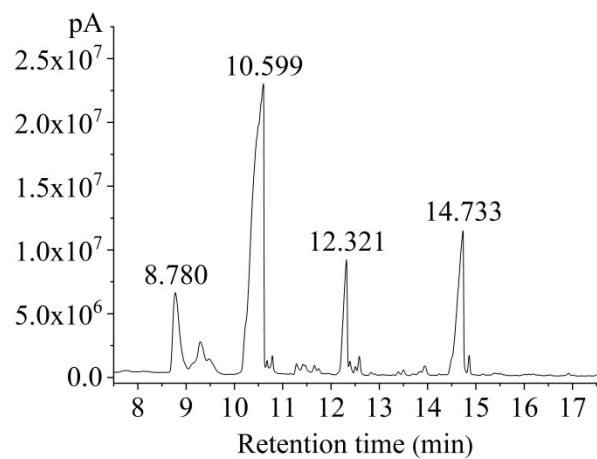


Supplementary information



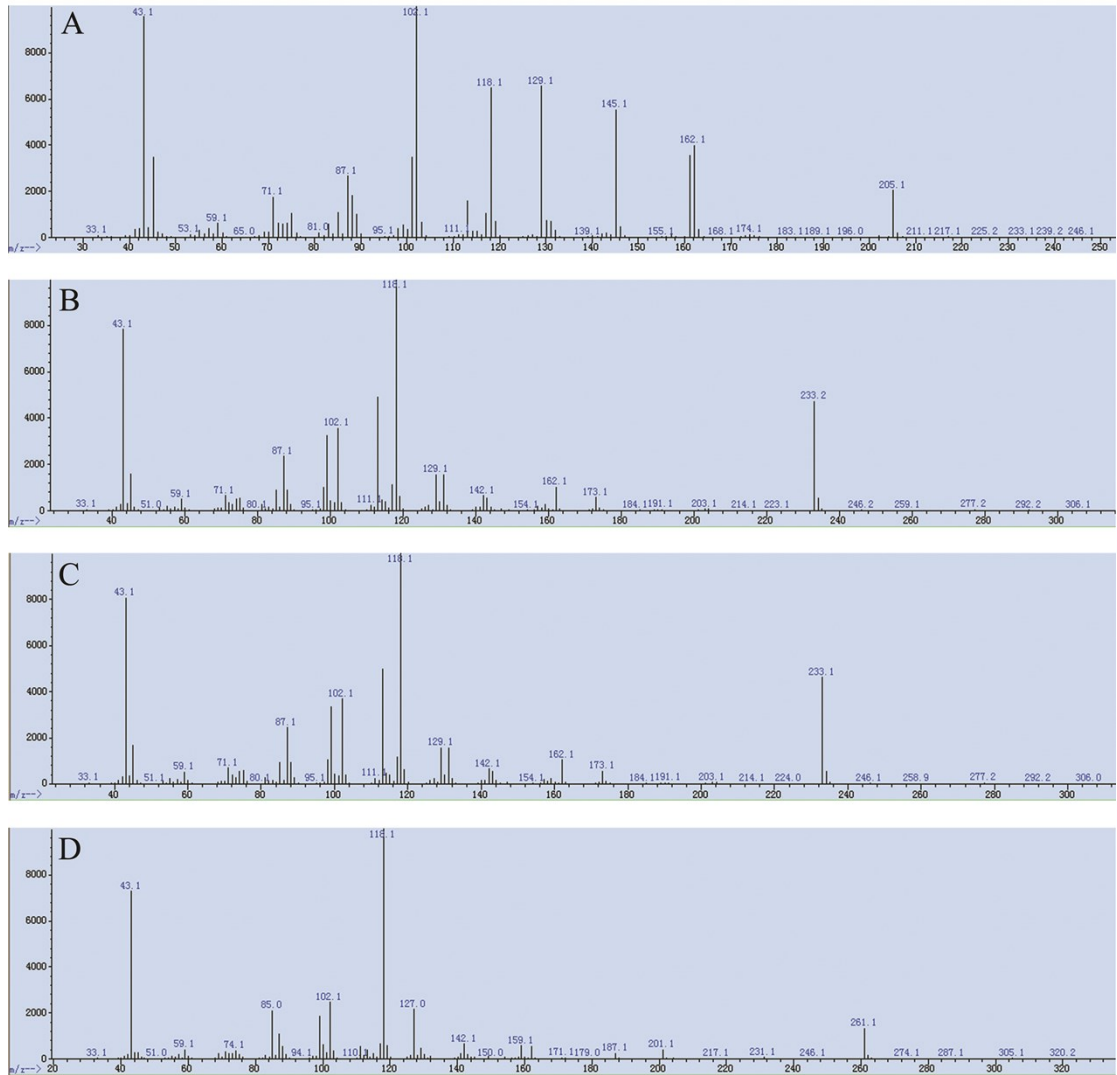
Supplementary Figure 1

Elution curve of cDFP on DE-52 cellulose anion exchange column (A), HPGPC spectrum of cDFP-W (B), Elution curve of cDFP-W on Sephadex G-75 column (C), UV spectrum of cDFP-W1 (D).



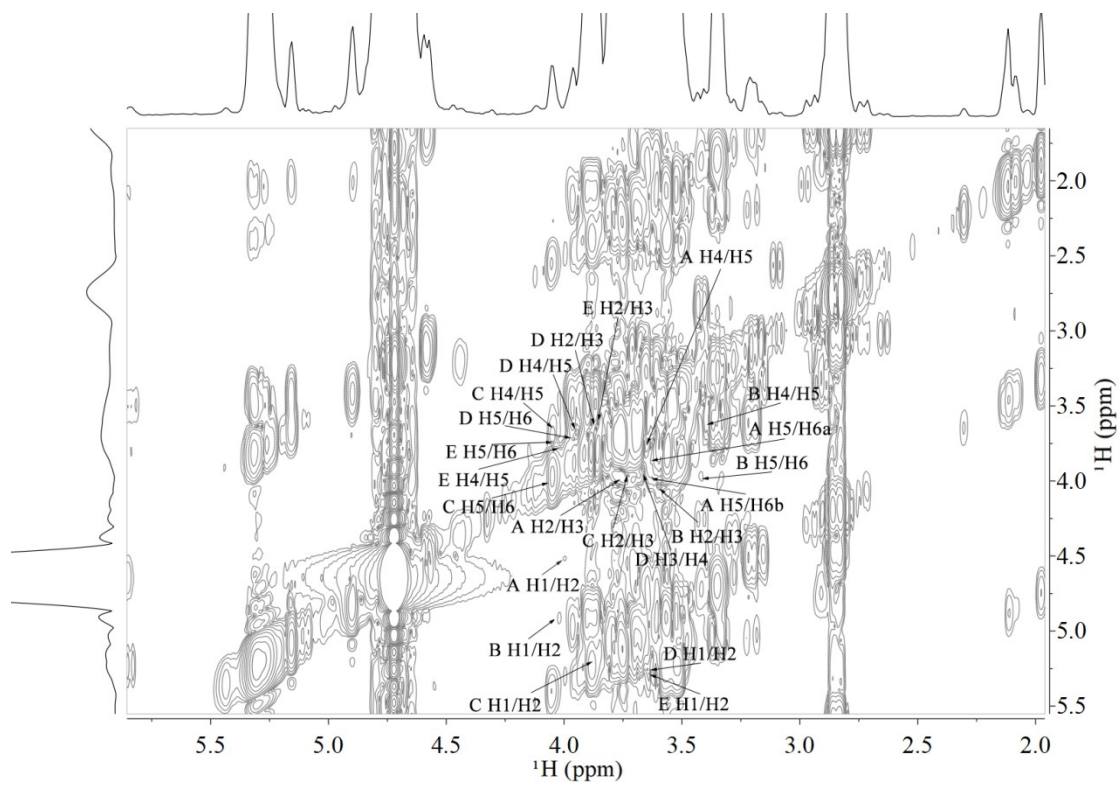
Supplementary Figure 2

The total ion current profile of methylation analysis of cDFP-W1.



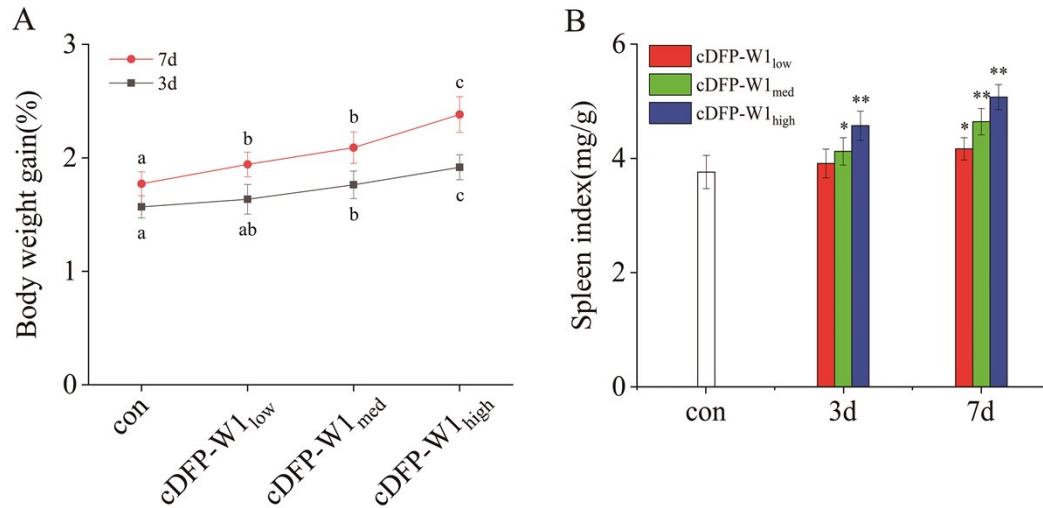
Supplementary Figure 3

A. Mass fragment of 8.780 min (2,3,4,6-Me₄-Manp); B. Mass fragment of 10.599 min (2,3,6-Me₃-Glc_p); C. Mass fragment of 12.321 min (2,3,6-Me₃-Manp); D. Mass fragment of 14.733 min (2,3-Me₂-Glc_p).



Supplementary Figure 4

The COSY spectrum of cDFP-W1.



Supplementary Figure 5

Effects of oral administration period and doses of cDFP-W1 on body weight change

(A) and spleen index (B) in mice. In A, the means with different lowercases are significantly different ($p < 0.05$). In B, $*p < 0.05$ and $**p < 0.01$ versus control group.

Body weight gain (%) = $[(\text{body weight of day 3 or 7} - \text{body weight of day 0}) / \text{body weight of day 0}] \times 100$. Index (mg/g) = organ weight / body weight.