

SPIONs decorated organofunctionalized MCM48 silica-based nanocomposites for magnetic solid phase extraction

Daniel Garcia Osorio^a, Helton P. Nogueira^a, Josué M. Goncalves^a, Sergio H. Toma^a, Sergi Garcia-Segura^c, Koiti Araki^{a,*}

Supplementary Material

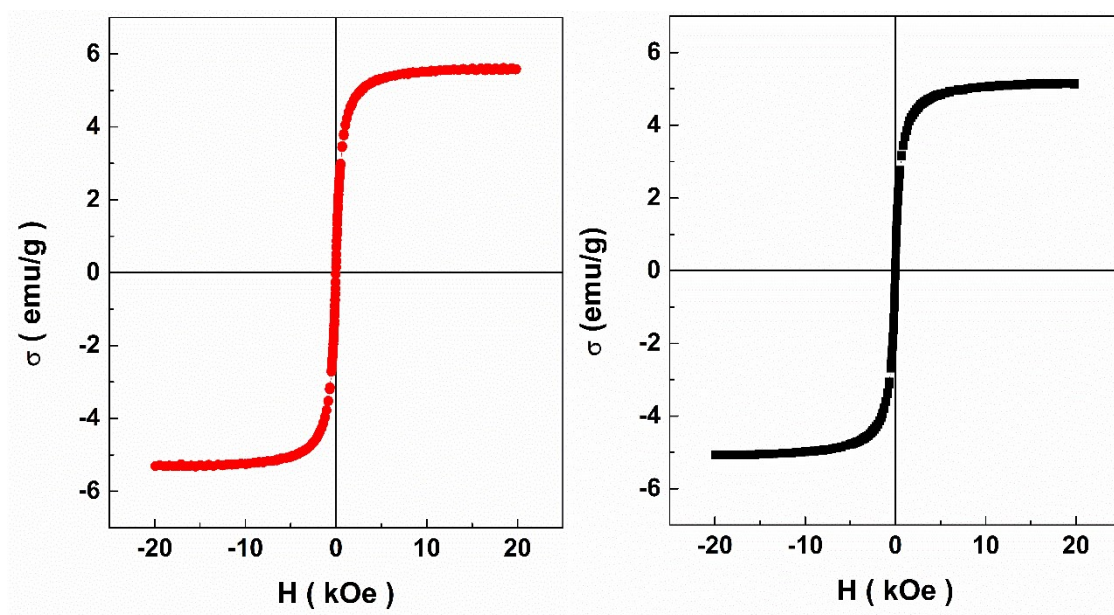


Fig. S1: Magnetic hysteresis curves for MCM48/SPION/C8 (left) and Silica/SPION/C8 (right).

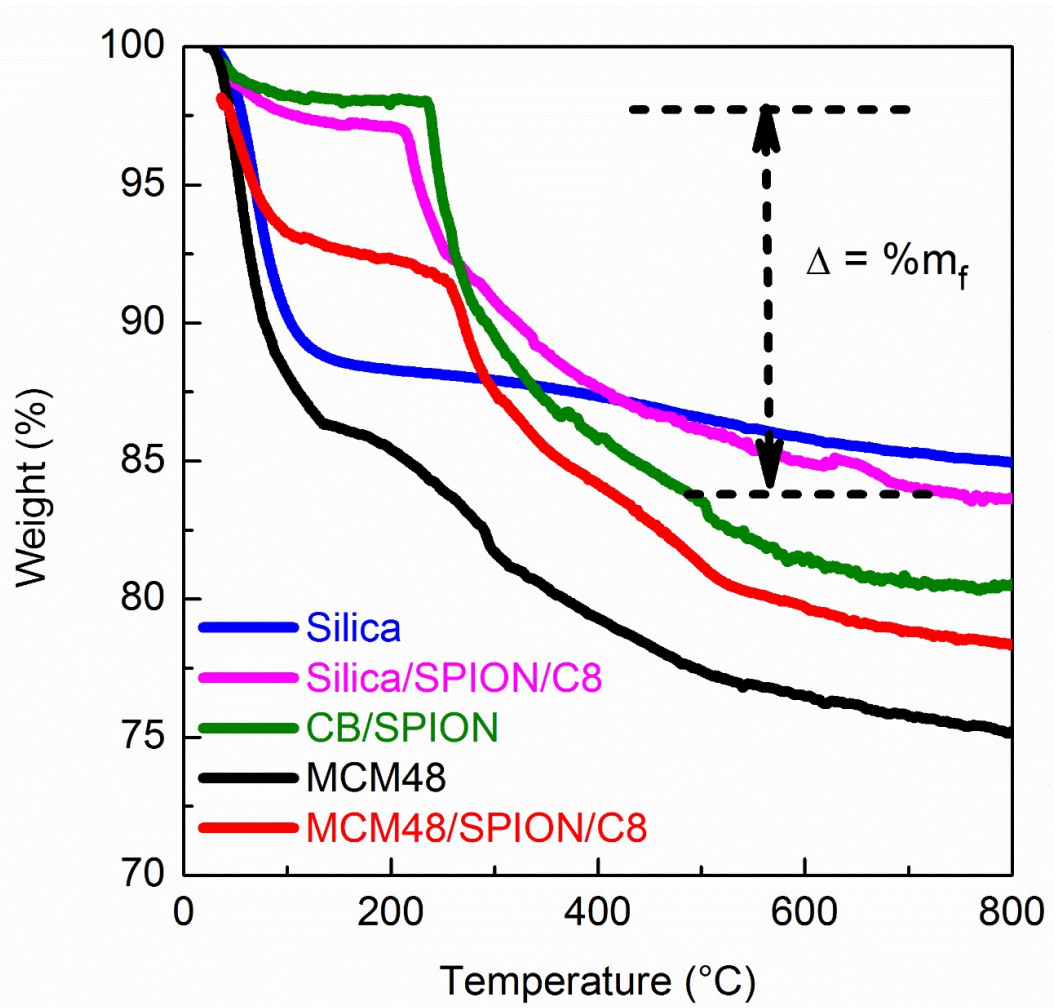


Fig. S2: Thermogravimetric Analysis of the prepared silica and MCM48-based materials.

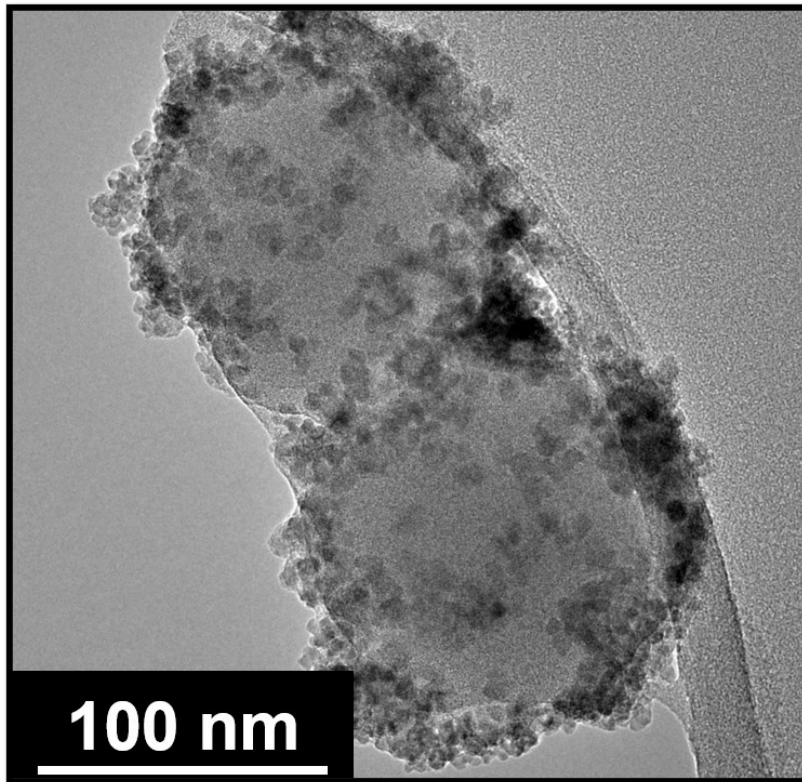


Fig. S3: MCM48/SPION/C8 HRTEM Image.

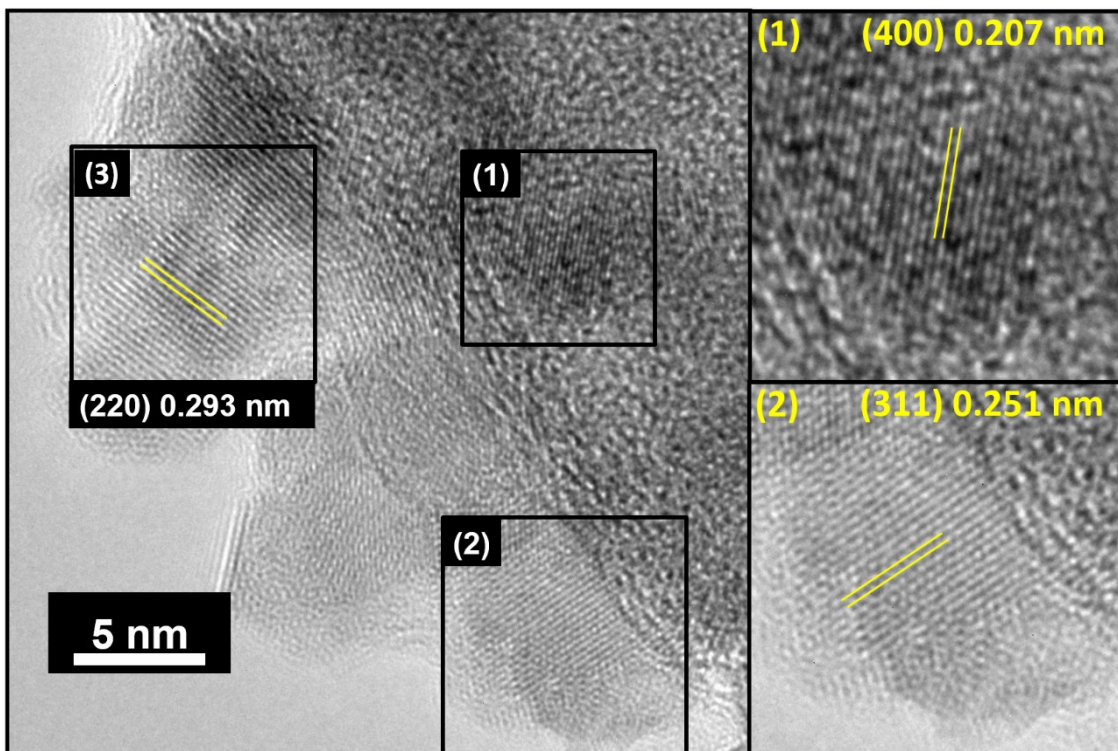


Fig. S4: MCM48/SPION/C8 HRTEM image evidencing the magnetite crystallographic plans.

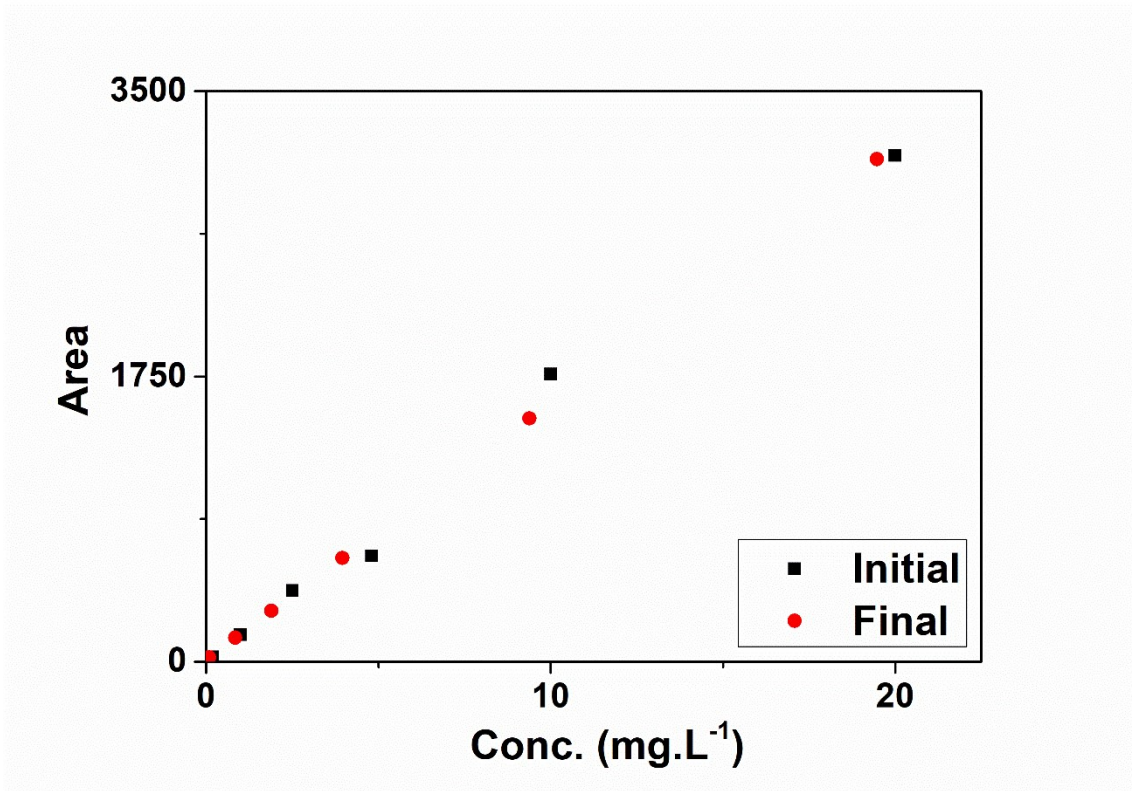


Fig. S5: Benzene GC-MS integral area as a function of concentration before and after one cycle of adsorption/desorption assay.