

Supporting information

Protein A-Mesoporous Silica Composites for Chromatographic Purification of Immunoglobulin G

Si Huang,^{a,c,d} Si-Yuan Chen,^a Shu-Yuan Zhang,^a Yi-Lun Yan,^a Song-Liang Cai,^{*a} Xin-Le Li,^{*b} Sheng-Run Zheng,^a Jun Fan^a and Wei-Guang Zhang^{*a}

^aSchool of Chemistry, South China Normal University, Guangzhou 510006, China

^bThe Molecular Foundry, Lawrence Berkeley National Laboratory, Berkeley, California 94720, USA

^cKey Laboratory of Phytochemical R&D of Hunan Province, Hunan Normal University, Changsha 410081, China

^dLaboratory of Organic Chemistry, Wageningen University, Stippeneng 4, 6703 WE Wageningen, the Netherlands

E-mail: songliangcai@m.scnu.edu.cn; xinlel@lbl.gov; wgzhang@scnu.edu.cn

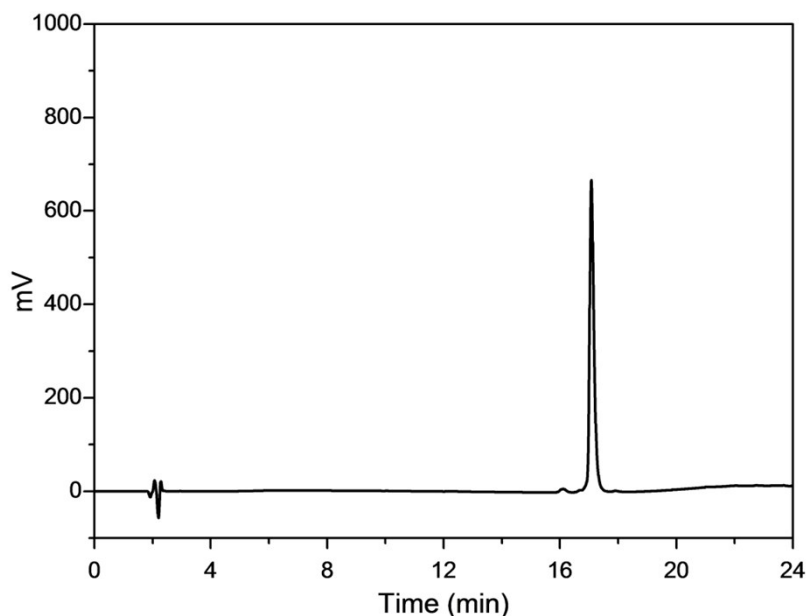


Fig. S1 HPLC chromatogram of standard protein A (1.5 mg/mL) on a Waters Xbride BEH C4 column (4.6 × 250 mm, 3.5 μm pore size). Chromatographic conditions: UV detector at 220 nm; mobile phase A is water containing 0.1% trifluoroacetate; mobile phase B is acetonitrile containing 0.1% trifluoroacetate; the percentage of mobile phase A increases from 1% to 90% within 40 min at a flow rate of 1 mL/min.

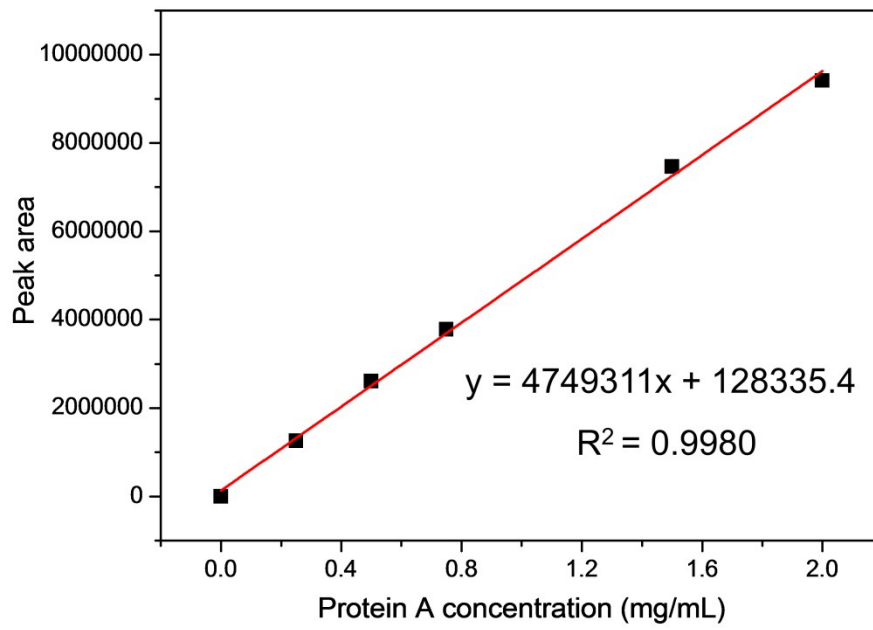


Fig. S2 The calibration curve of protein A.

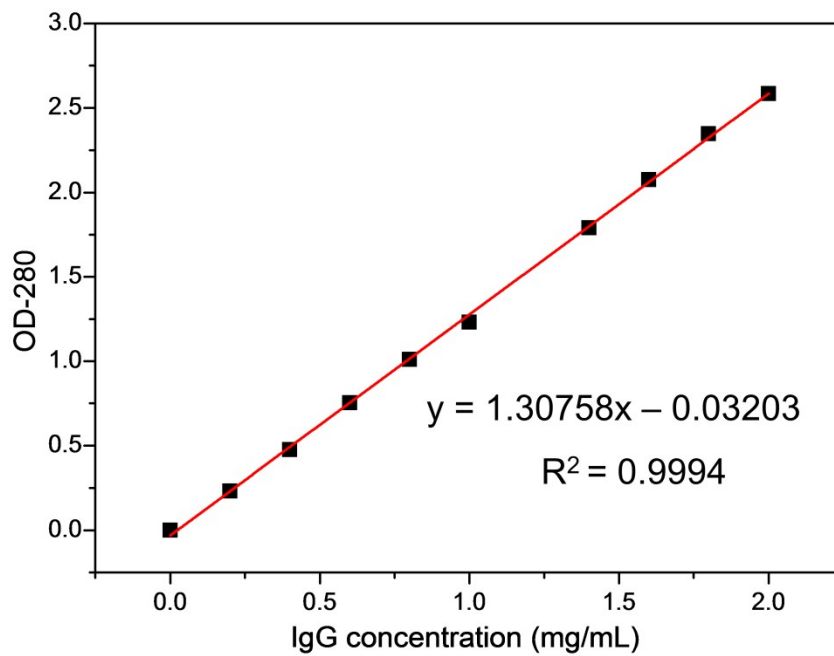


Fig. S3 The calibration curve of IgG.