

## Supporting Information

### **A pH/Ultrasonic Dual-response Step-targeting Enterosoluble Granule for Combined Sonodynamic-chemotherapy Guided via Gastrointestinal Tract Imaging in Orthotopic Colorectal Cancer**

Ruo-Yun Zhang <sup>1#</sup>, Kai Cheng <sup>1,2#</sup>, Yang Xuan <sup>3#</sup>, Xiao-Quan Yang <sup>1,2</sup>, Jie An <sup>1</sup>, Yong-Guo Hu <sup>1</sup>, Bo Liu <sup>1</sup>, Yuan-Di Zhao <sup>1,2\*</sup>

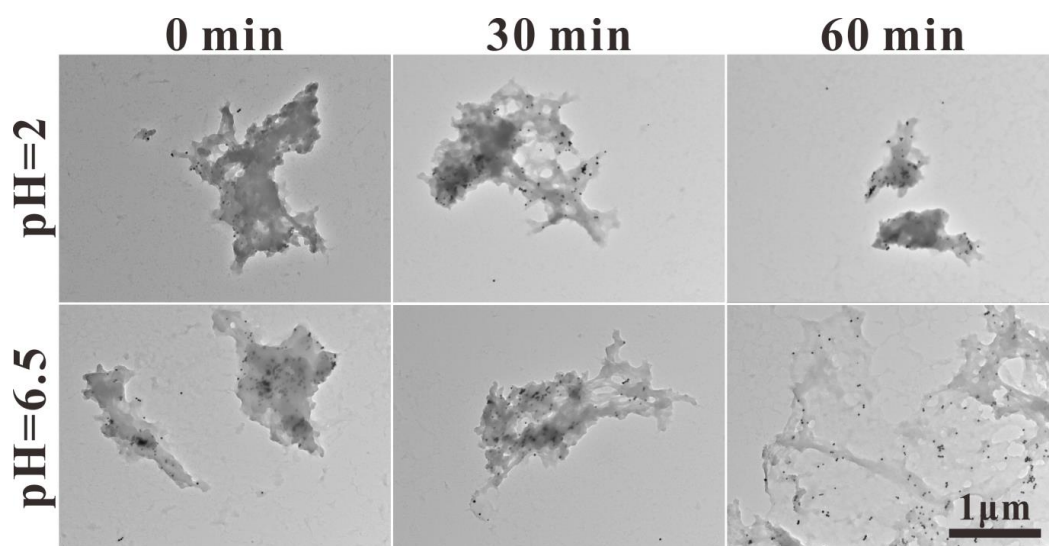
<sup>1</sup> Britton Chance Center for Biomedical Photonics at Wuhan National Laboratory for Optoelectronics-Hubei Bioinformatics & Molecular Imaging Key Laboratory, Department of Biomedical Engineering, College of Life Science and Technology, Huazhong University of Science and Technology, Wuhan 430074, Hubei, P. R. China

<sup>2</sup> Key Laboratory of Biomedical Photonics (HUST), Ministry of Education, Huazhong University of Science and Technology, Wuhan 430074, Hubei, P. R. China

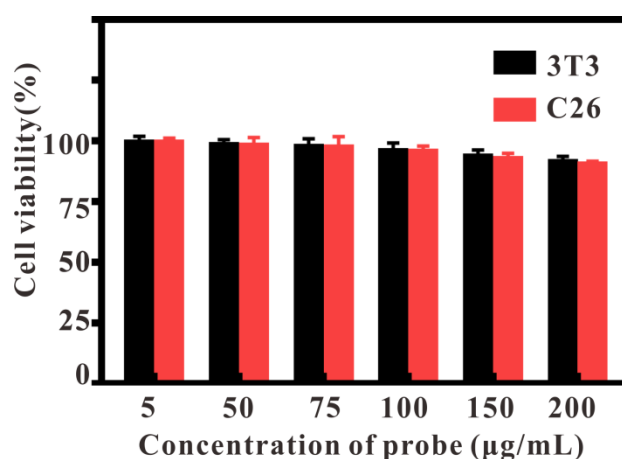
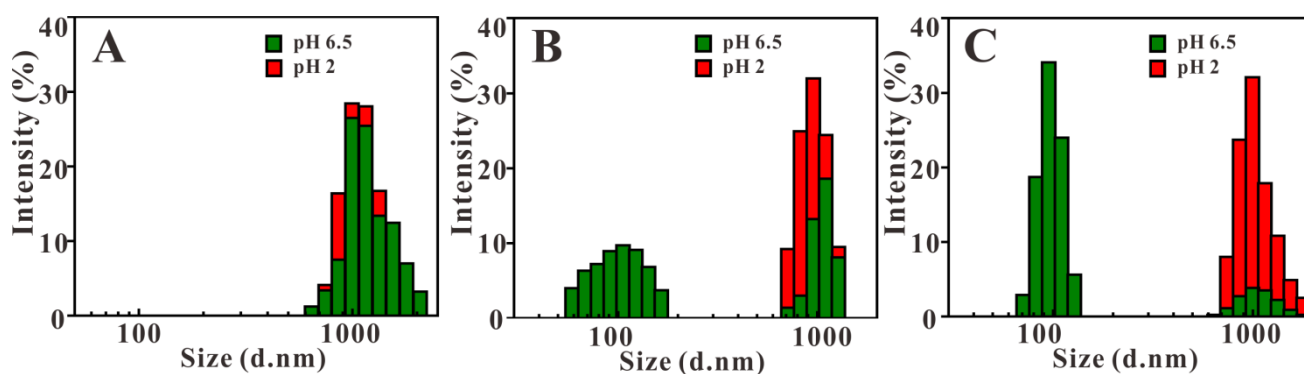
<sup>3</sup> Key Lab of Biotechnology and Bioresources Utilization of Ministry of Education, College of Life Science, Dalian Minzu University, Dalian, Liaoning, 116600, China

# These authors contributed equally to this article.

\* Corresponding author. Tel/Fax: +86-27-8779-2202. Email address: zydi@mail.hust.edu.cn (Y.D. Zhao)



**Figure S1.** TEM of GMCDS-FA@CMC in pH=2 and pH=6.5 environment with different incubation times.



**Figure S3.** Cell viability of 3T3 and C26 cells incubated with GMS-FA@CMC at different concentrations. Error bars represented standard deviations of six separate measurements (n=6).