

Supporting Information-III [Racemic and Chiral HPLC Spectrums]

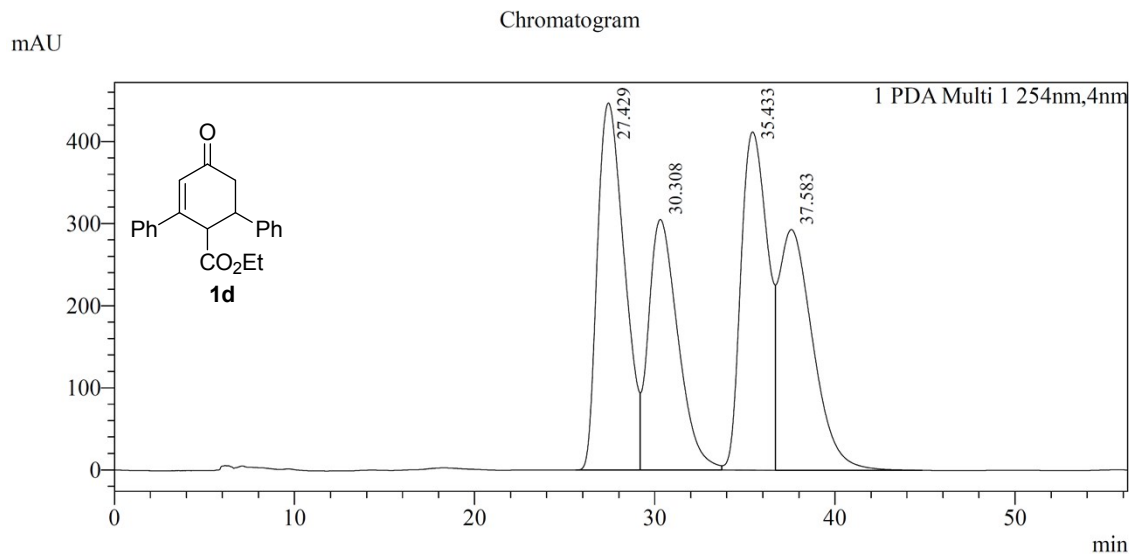
Organocatalytic Enone-Azide [3+2]-Cycloaddition: Synthesis of Functionally Rich C/N-Double Vinyl 1,2,3-Triazoles

G. Surendra Reddy, A. Suresh Kumar, and Dhevalapally B. Ramachary*

*Catalysis Laboratory, School of Chemistry, University of Hyderabad, Central University,
Prof CR Rao Road, Gachibowli, Hyderabad-500 046, Telangana, India*
E-mail: ramsc@uohyd.ac.in and ramchary.db@gmail.com

The enantiomeric excess (*ee*) of the chiral enone (-)-**1d** and chiral click products (+)-**4da** and (+)-**7da** was determined by chiral stationary phase HPLC using a Daicel Chiralpak AD-H or Daicel Chiralpak IB-3 or Daicel Chiralcel OJ-H column and using hexane/2-propanol as the eluent. Retention times and solvent ratios are indicated in the respective entries.

Racemic (\pm)-**1d**:

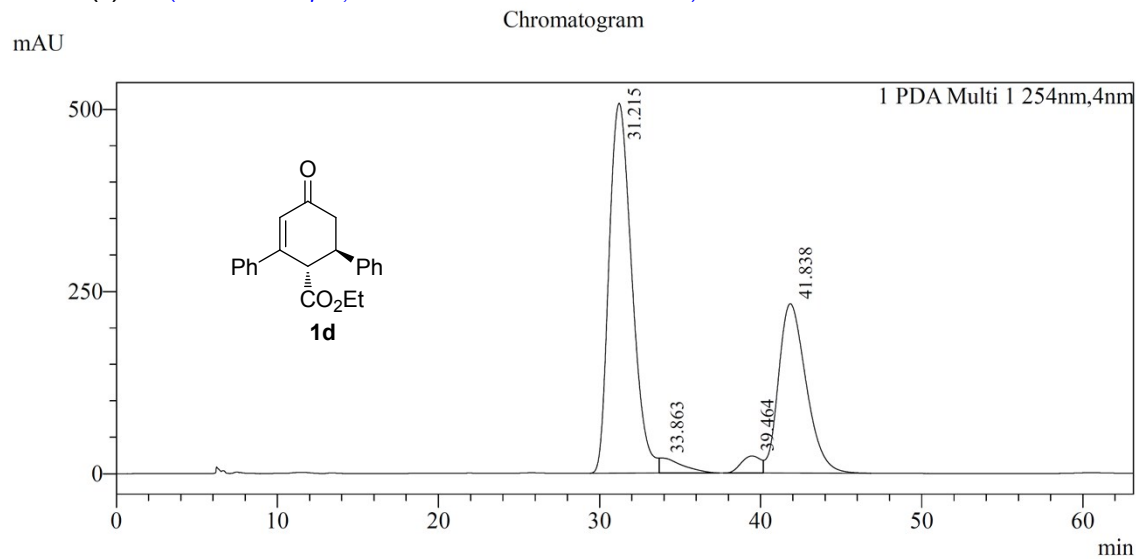


Chiralpak AD-H, Hexane/i-PrOH = 95:05, Flow Rate 0.5 mL/Min, 254 nm

Peak Table

PDA Ch1 254nm							
Peak#	Name	Ret. Time	Area	Height	Area%	Height%	
1	RT:27.429	27.429	46556681	446974	28.632	30.676	
2	RT:30.308	30.308	34876637	305135	21.449	20.942	
3	RT:35.433	35.433	42545827	411903	26.166	28.269	
4	RT:37.583	37.583	38623564	293068	23.753	20.113	
Total			162602709	1457079	100.000	100.000	

Chiral (-)-**1d** (92% *ee* major; 86.6% *ee* minor and 27% *de*):

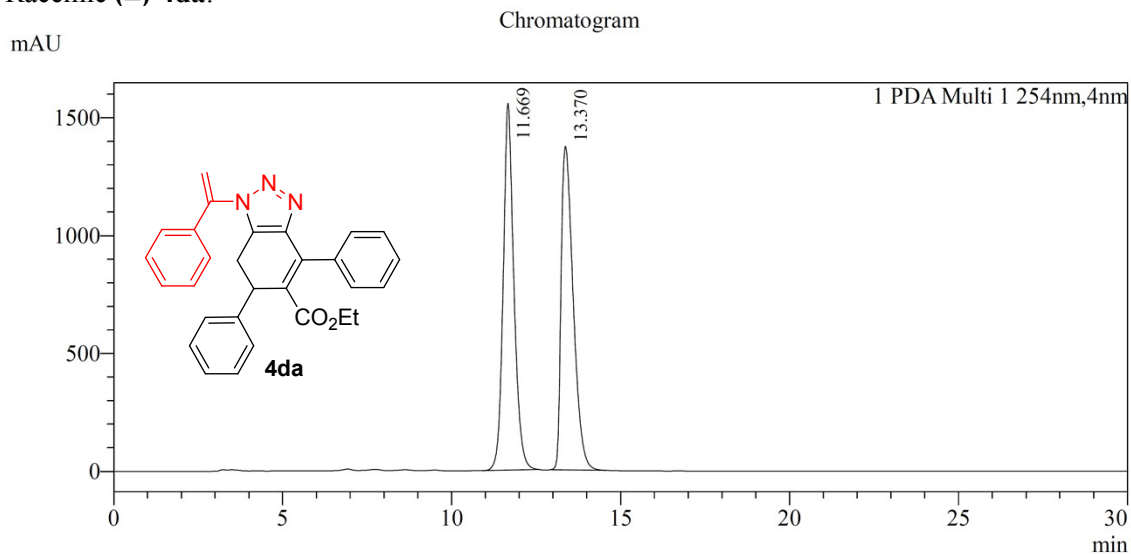


Chiralpak AD-H, Hexane/i-PrOH = 95:05, Flow Rate 0.5 mL/Min, 254 nm

Peak Table

PDA Ch1 254nm							
Peak#	Name	Ret. Time	Area	Height	Area%	Height%	
1	RT:31.215	31.215	49974848	507528	61.100	64.727	
2	RT:33.863	33.863	1996070	20577	2.440	2.624	
3	RT:39.464	39.464	1975269	23463	2.415	2.992	
4	RT:41.838	41.838	27846173	232535	34.045	29.656	
Total			81792361	784102	100.000	100.000	

Racemic (\pm)-4da:

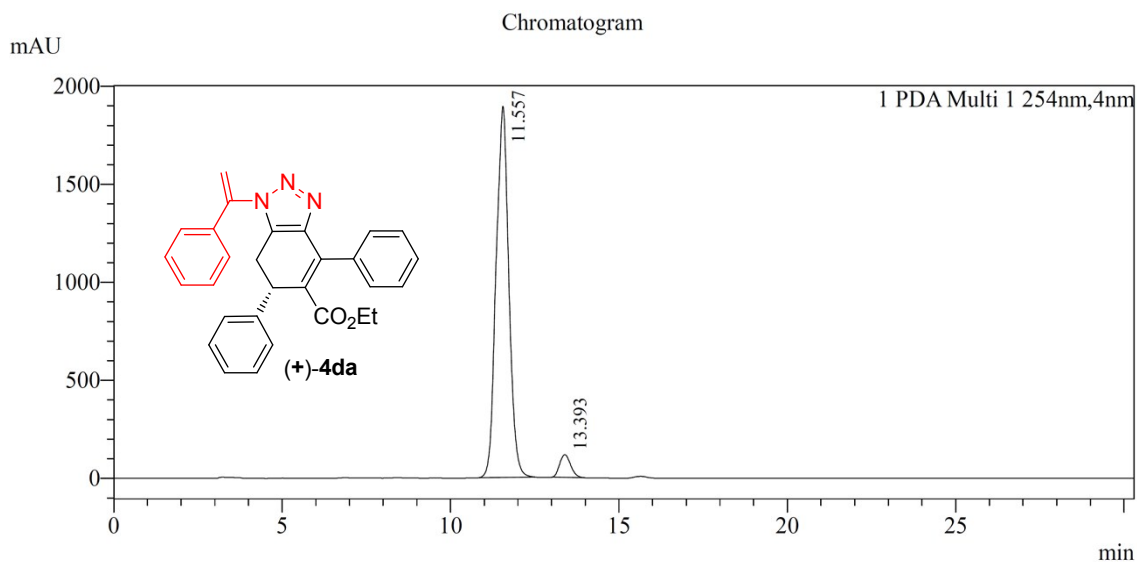


Chiralpak IB-3, Hexane/i-PrOH = 90:10, Flow Rate 1.0 mL/Min, 254 nm

Peak Table

PDA Ch1 254nm						
Peak#	Name	Ret. Time	Area	Height	Area%	Height%
1	RT:11.669	11.669	34236063	1556478	50.113	53.151
2	RT:13.370	13.370	34081999	1371906	49.887	46.849
Total			68318062	2928384	100.000	100.000

Chiral (+)-4da (89.9% ee):

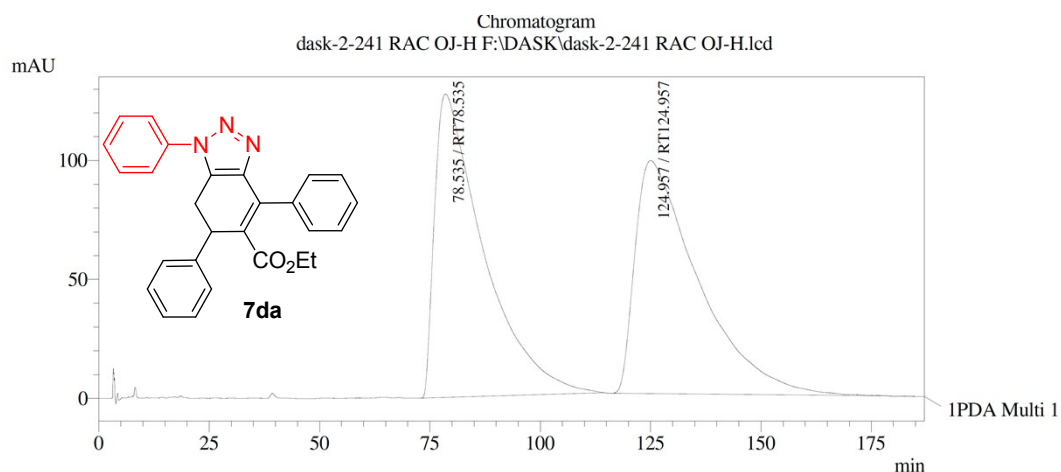


Chiralpak IB-3, Hexane/i-PrOH = 90:10, Flow Rate 1.0 mL/Min, 254 nm

Peak Table

PDA Ch1 254nm						
Peak#	Name	Ret. Time	Area	Height	Area%	Height%
1	RT:11.557	11.557	49730629	1892017	94.961	94.233
2	RT:13.393	13.393	2638744	115787	5.039	5.767
Total			52369373	2007805	100.000	100.000

Racemic (\pm)-7da:



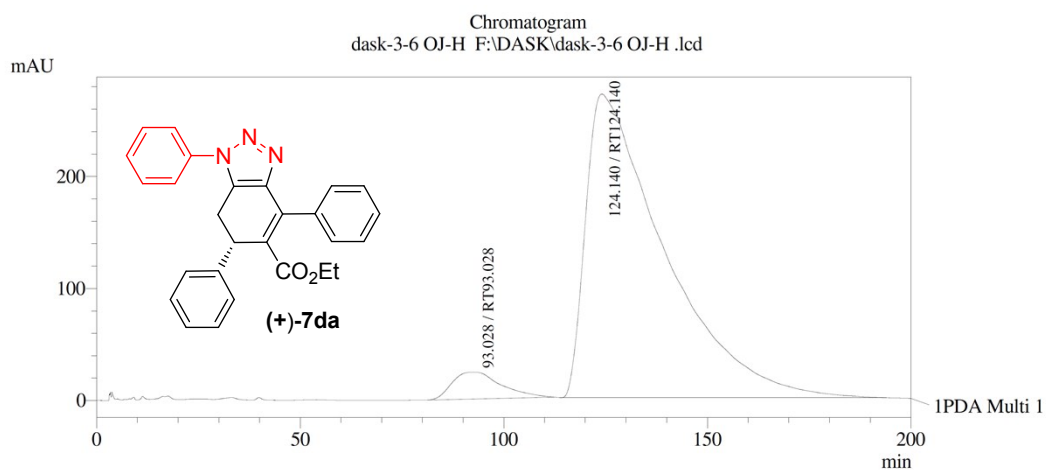
Chiralpak OJ-H, Hexane/i-PrOH = 90:10, Flow Rate 1.0 mL/Min, 254 nm

PeakTable

PDA Ch1 254nm 4nm

Peak#	Name	Ret. Time	Area	Height	Area %	Height %
1	RT78.535	78.535	98125466	127506	50.211	56.560
2	RT124.957	124.957	97301589	97927	49.789	43.440
Total			195427054	225433	100.000	100.000

Chiral (+)-7da (89.6% ee):



Chiralpak OJ-H, Hexane/i-PrOH = 90:10, Flow Rate 1.0 mL/Min, 254 nm

PeakTable

PDA Ch1 254nm 4nm

Peak#	Name	Ret. Time	Area	Height	Area %	Height %
1	RT93.028	93.028	19872292	23764	5.181	8.062
2	RT124.140	124.140	363704549	271017	94.819	91.938
Total			383576841	294781	100.000	100.000